



ALASKA DEPARTMENT OF NATURAL RESOURCES DIVISION OF FORESTRY & FIRE PROTECTION

CHRISTMAS TREE CUTTING ON THE KENAI PENINSULA

The holidays are approaching, and Alaskans are starting to decorate for the festive season. For many, the tree can be a focal point of holiday decorations. Several retailers sell Christmas trees, however, there are some folks who prefer to venture out to select and cut their own tree. If you are one of those people, the Alaska Division of Forestry & Fire Protection provides for this holiday tradition.

Cutting Christmas trees on unrestricted state lands on the Kenai Peninsula is allowed with some stipulations. Cutting of trees is prohibited in state parks and Department of Transportation (DOT) rights-of-way. It is also prohibited on Alaska Native lands and other private property. It is important to properly identify land ownership where you intend to cut your tree. See the maps below for more detailed tree cutting areas. If you have any questions regarding land ownership, consult the Division of Forestry & Fire Protection Area office in Soldotna at 907-260-4200.

To find out more information about cutting trees in the Chugach National Forest, call 907-743-9500 or go to <https://www.fs.usda.gov/detail/chugach/home/>. For information about cutting trees in the Kenai National Wildlife Refuge, call 907-262-7021 or go to <https://www.fws.gov/refuge/kenai/>. For information about cutting trees in the Kenai Peninsula Borough, call 907-714-2205 or go to <https://www.kpb.us/>

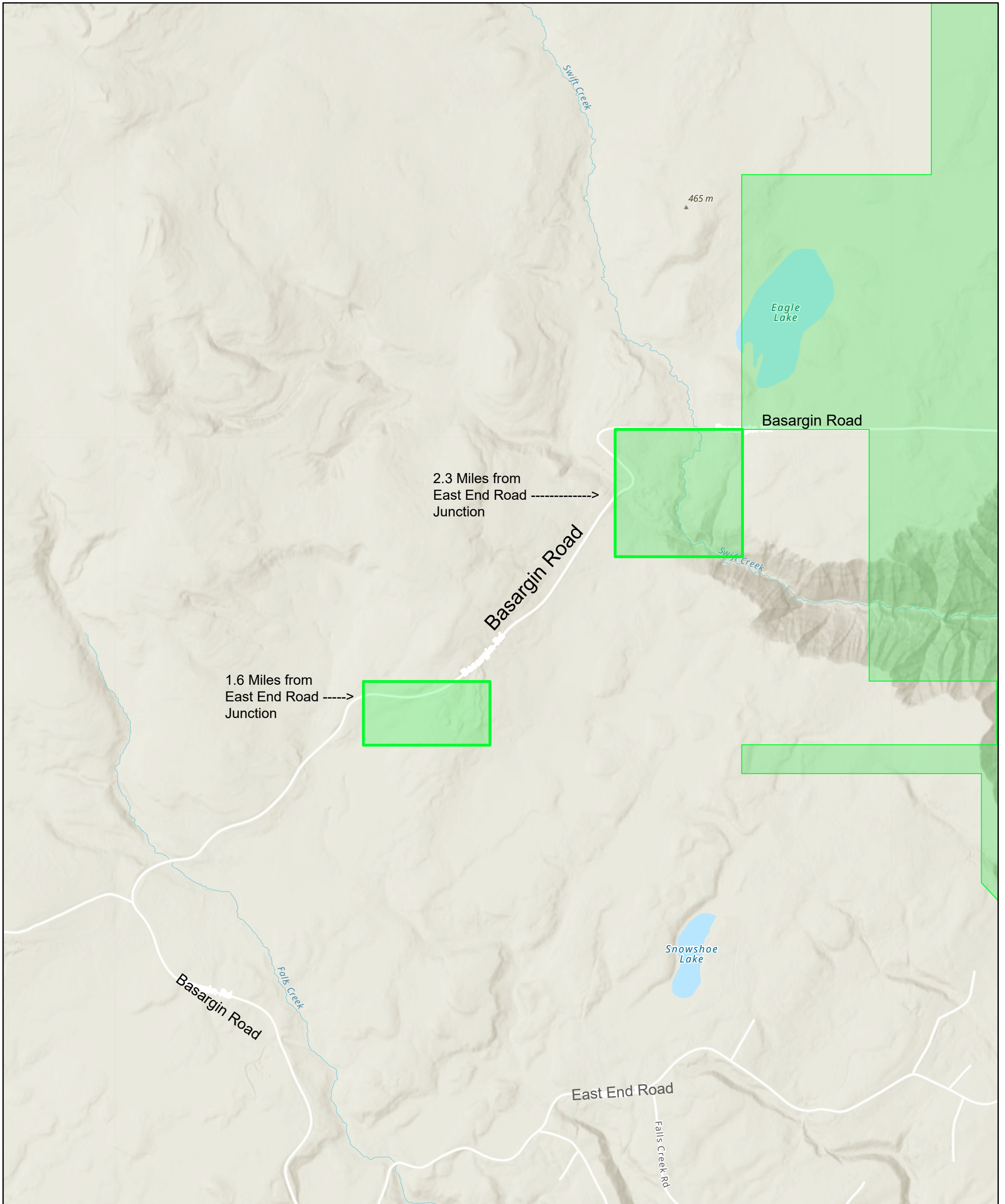
No permit or fee is required to cut a tree. Trees must be no more than 15 feet tall and only one tree per household is allowed. Trees should be cut as low to the ground as possible. Christmas trees cut on state land are for personal use only and may not be sold. Please do not litter and be courteous to other tree cutters and/or residents who live in the area.

Keep in mind, the Division of Forestry & Fire Protection does not maintain forest roads. Anyone traveling on forest roads should have appropriate gear and equipment in the event they become stuck. This includes tire chains, a shovel, tow strap and warm clothing.

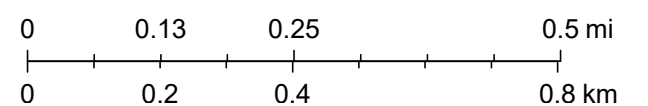
HAVE A SAFE AND HAPPY HOLIDAY!



East End Road Christmas Tree Harvest Area



- Christmas trees are for personal use only, not for resale.
- Make sure you harvest trees located on state land.
- Always cut trees with safety in mind.
- Limited vehicle access - Snowmachine / ATV recommended.
- For further information, contact Alaska Division of Forestry & Fire Protection at (907) 260-4200.

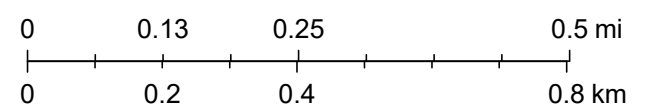




North Cohoe Christmas Tree Harvest Area

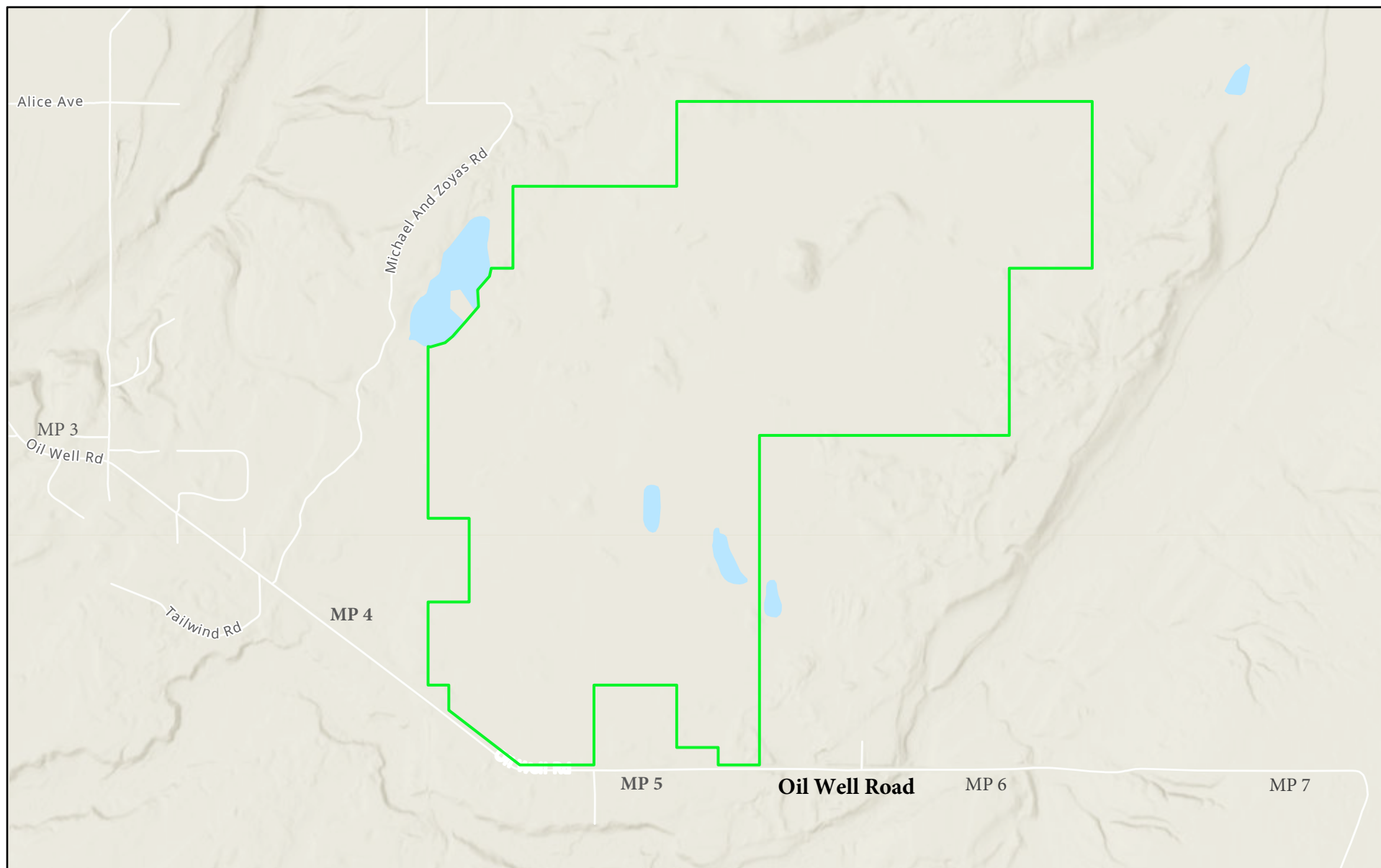


- Christmas trees are for personal use only, not for resale.
- Make sure you harvest trees located on state land.
- Always cut trees with safety in mind.
- Limited vehicle access - Snowmachine / ATV recommended.
- For further information, contact Alaska Division of Forestry & Fire Protection at (907) 260-4200.

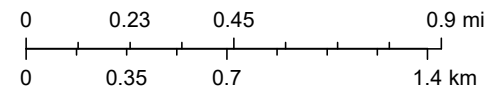




Oil Well Road Christmas Tree Harvest Area

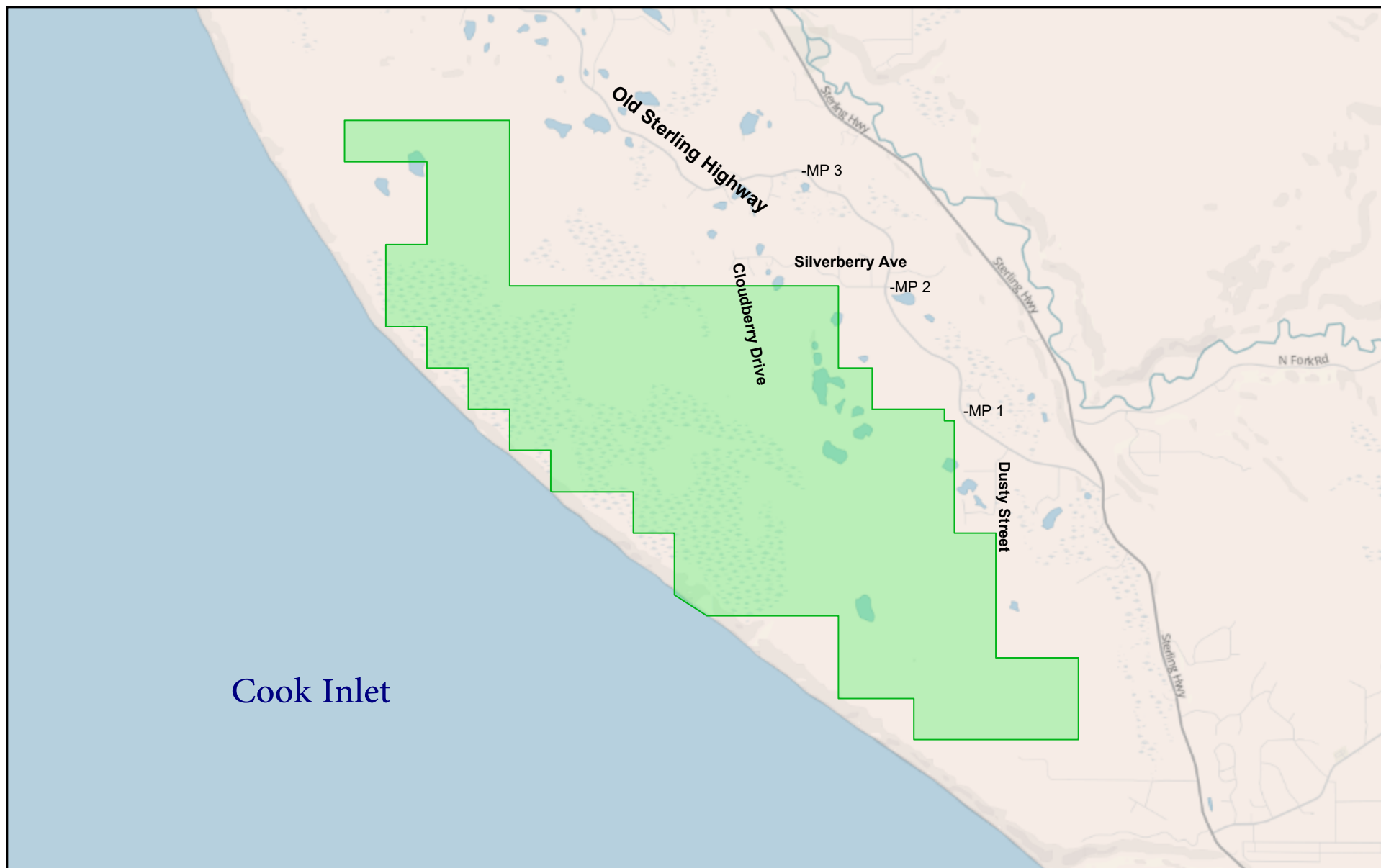


- Christmas trees are for personal use only, not for resale.
- Make sure you harvest trees located on state land.
- Always cut trees with safety in mind.
- Limited vehicle access - Snowmachine / ATV recommended.
- For further information, contact Alaska Division of Forestry & Fire Protection at (907) 260-4200.

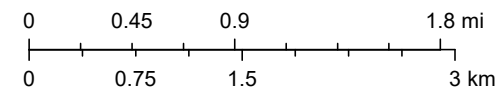




Old Sterling Highway Christmas Tree Harvest Area

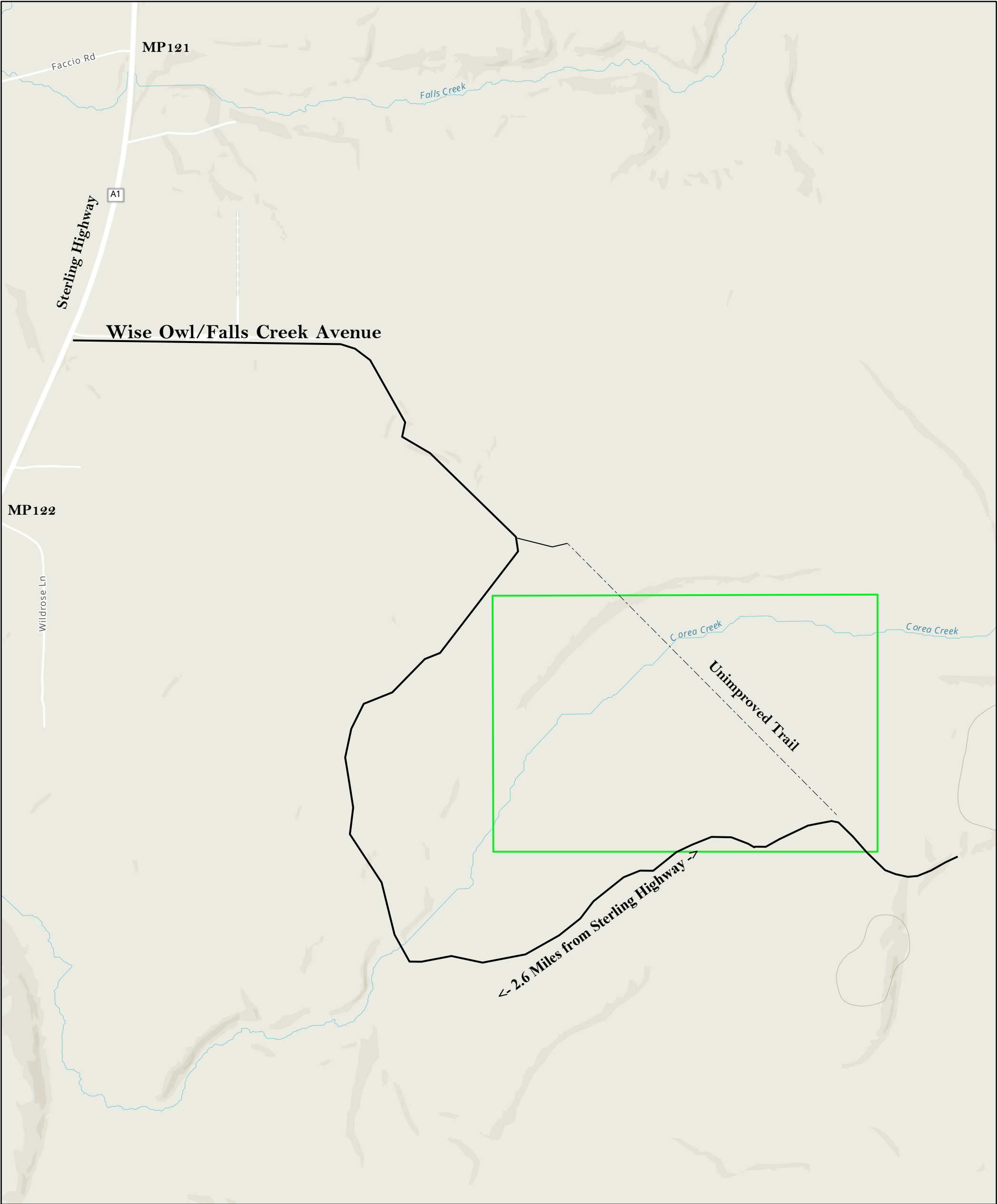


- Christmas trees are for personal use only, not for resale.
- Make sure you harvest trees located on state land.
- Always cut trees with safety in mind.
- Limited vehicle access - Snowmachine / ATV recommended.
- For further information, contact Alaska Division of Forestry & Fire Protection at (907) 260-4200.





Wise Owl / Falls Creek Christmas Tree Harvest Area



- Christmas trees are for personal use only, not for resale.
- Make sure you harvest trees located on state land.
- Always cut trees with safety in mind.
- Limited vehicle access - Snowmachine / ATV recommended.
- For further information, contact Alaska Division of Forestry & Fire Protection at (907) 260-4200.

