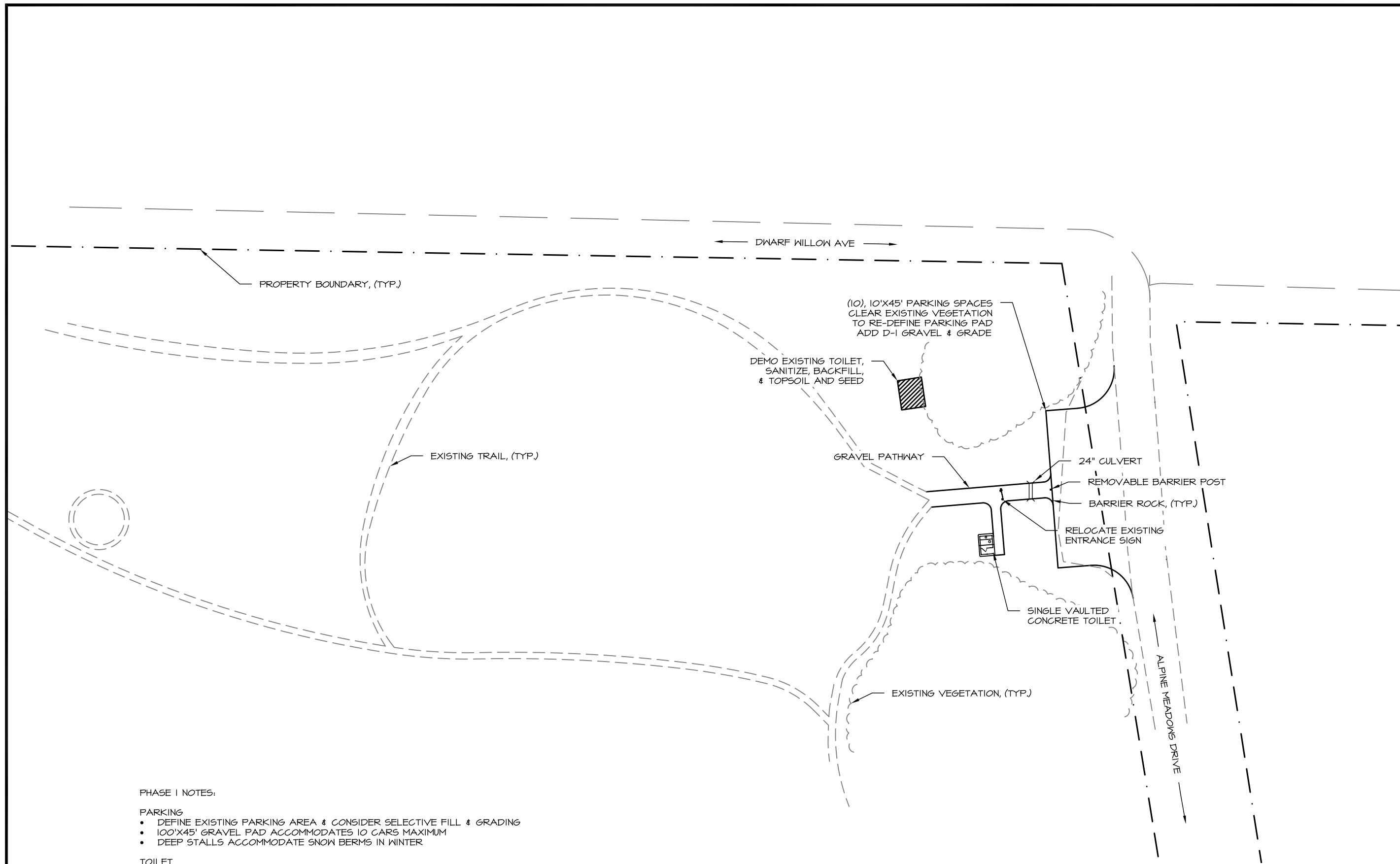




PREPARED: EAT  
DRAWN: AMR  
REVIEWED: LMR  
DATE: 7/23/2015

SHEET  
OF 3 SHEETS



PHASE I NOTES:

PARKING

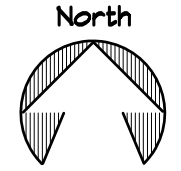
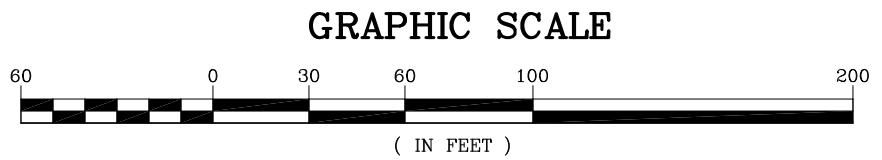
- DEFINE EXISTING PARKING AREA & CONSIDER SELECTIVE FILL & GRADING
- 100'X45' GRAVEL PAD ACCOMMODATES 10 CARS MAXIMUM
- DEEP STALLS ACCOMMODATE SNOW BERMS IN WINTER

TOILET

- PARKS STANDARD SINGLE VAULTED CONCRETE TOILET
- PLACED FOR ADA ACCESSIBILITY & INSTALLATION & PUMPING PURPOSES

ENTRY

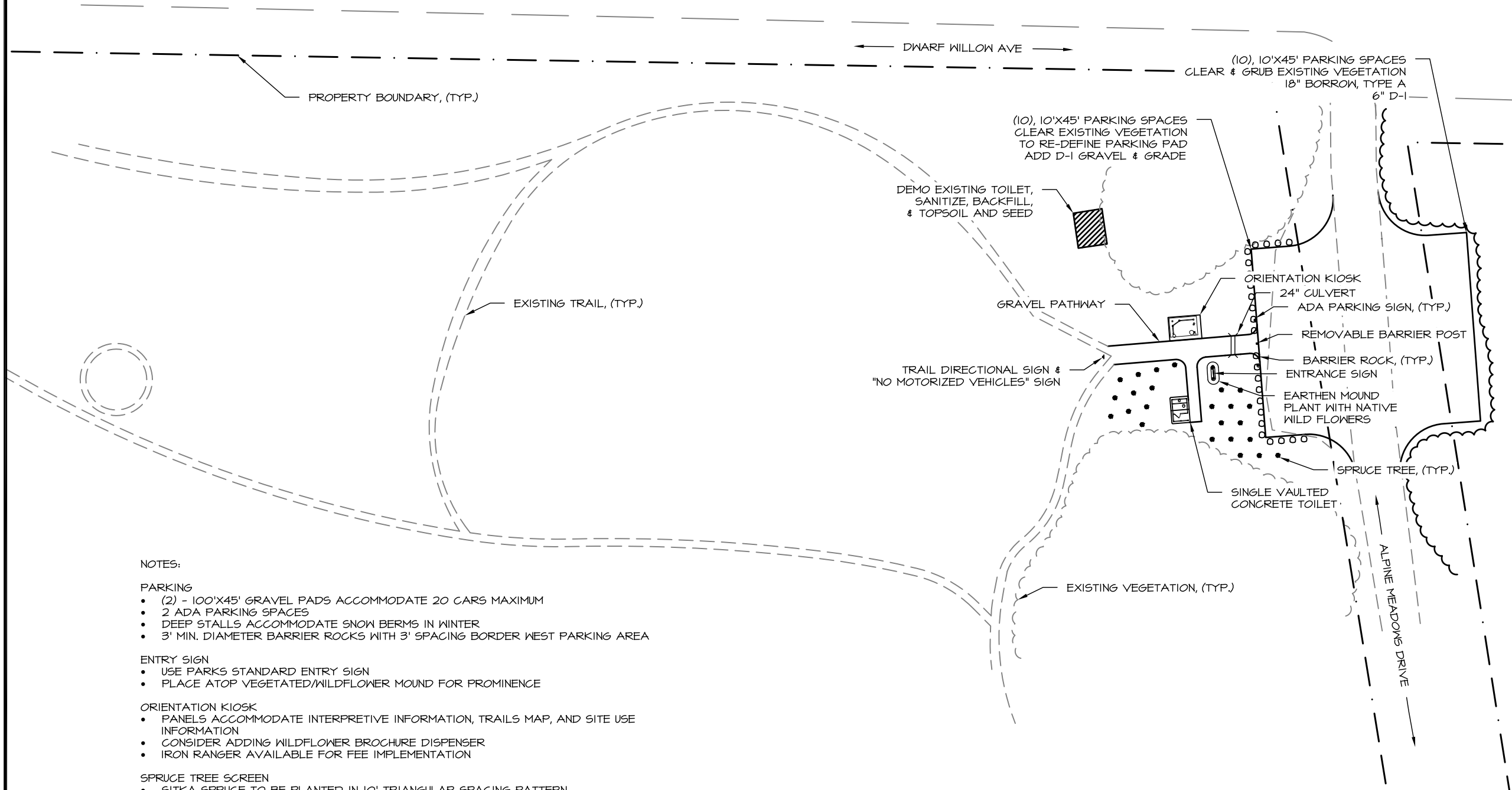
- REMOVABLE BARRIER POST FOR MAINTENANCE VEHICLE ENTRY
- BARRIER ROCKS REINFORCE NEW ENTRY
- WIDE GRAVEL PATHWAY W/ CULVERT ACCOMMODATES MAINTENANCE VEHICLE





PREPARED: EAT  
DRAWN: AMR  
REVIEWED: LMR  
DATE: 7/23/2015

SHEET  
2  
OF 3 SHEETS



NOTES:

PARKING

- (2) - 100'x45' GRAVEL PADS ACCOMMODATE 20 CARS MAXIMUM
- 2 ADA PARKING SPACES
- DEEP STALLS ACCOMMODATE SNOW BERMS IN WINTER
- 3' MIN. DIAMETER BARRIER ROCKS WITH 3' SPACING BORDER WEST PARKING AREA

ENTRY SIGN

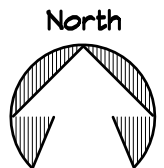
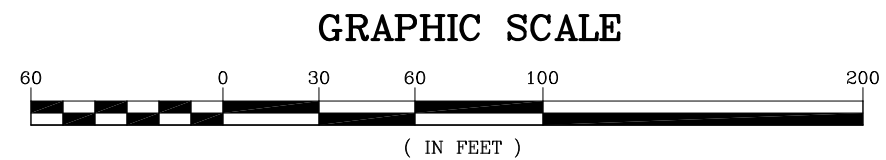
- USE PARKS STANDARD ENTRY SIGN
- PLACE ATOP VEGETATED/WILDFLOWER MOUND FOR PROMINENCE

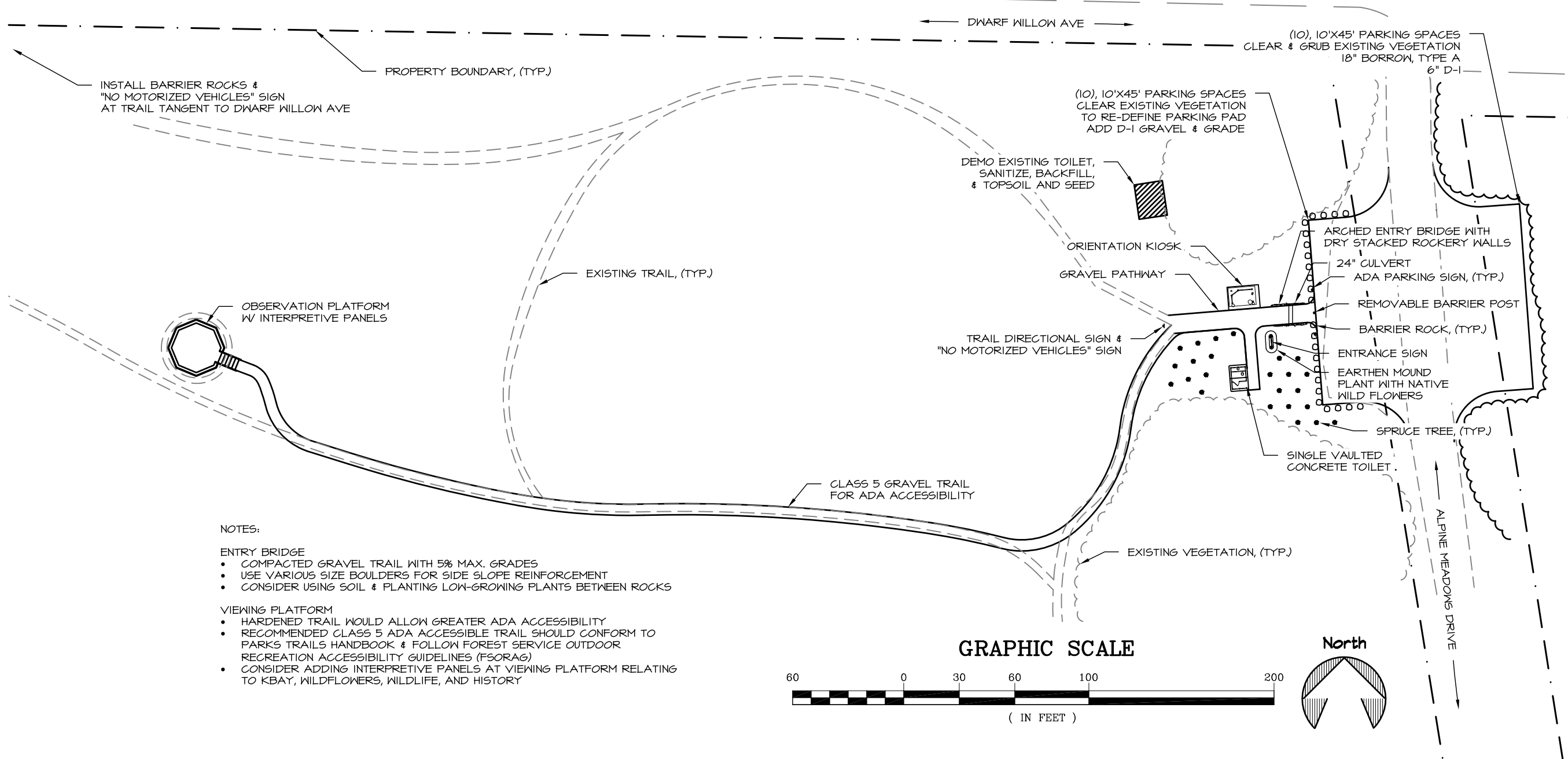
ORIENTATION KIOSK

- PANELS ACCOMMODATE INTERPRETIVE INFORMATION, TRAILS MAP, AND SITE USE INFORMATION
- CONSIDER ADDING WILDFLOWER BROCHURE DISPENSER
- IRON RANGER AVAILABLE FOR FEE IMPLEMENTATION

SPRUCE TREE SCREEN

- SITKA SPRUCE TO BE PLANTED IN 10' TRIANGULAR SPACING PATTERN
- SELECT TREES FOR 6' MINIMUM HEIGHT
- USE 10' MINIMUM OFFSET FROM TOILET TO BEGINNING OF PLANTINGS
- CONSIDER LOCAL TREE DONOR WITH NATIVE, FIELD GROWN SPRUCE





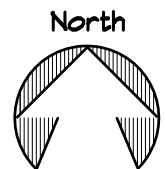
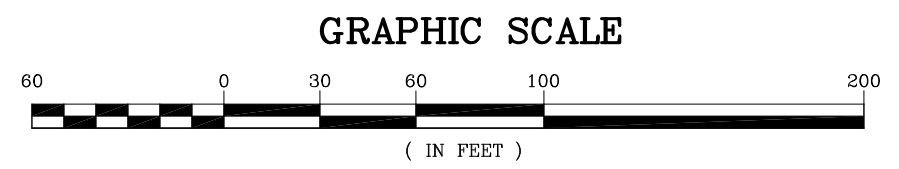
**NOTES:**

**ENTRY BRIDGE**

- COMPACTED GRAVEL TRAIL WITH 5% MAX. GRADES
- USE VARIOUS SIZE BOULDERS FOR SIDE SLOPE REINFORCEMENT
- CONSIDER USING SOIL & PLANTING LOW-GROWING PLANTS BETWEEN ROCKS

**VIEWING PLATFORM**

- HARDENED TRAIL WOULD ALLOW GREATER ADA ACCESSIBILITY
- RECOMMENDED CLASS 5 ADA ACCESSIBLE TRAIL SHOULD CONFORM TO PARKS TRAILS HANDBOOK & FOLLOW FOREST SERVICE OUTDOOR RECREATION ACCESSIBILITY GUIDELINES (FSORAG)
- CONSIDER ADDING INTERPRETIVE PANELS AT VIEWING PLATFORM RELATING TO KBAY, WILDFLOWERS, WILDLIFE, AND HISTORY



**ARCHED ENTRY BRIDGE DETAIL**

