

## Chapter 4: TRAIL MANAGEMENT RECOMMENDATIONS

In the Chugach State Park Management Plan, the park has been divided into five planning units which correspond roughly with important geographic regions. The recommendations of this plan will be made within these same planning units. They are Eklutna-Peters Creek, Eagle River, Ship Creek, Hillside, and Turnagain Arm. Map 4.1 depicts the planning units and the plan study area. Each unit will have a brief description and a trail matrix that will describe the specific management intent for each trail or trail segment within the unit. It is important to realize that the recommendations in the matrices describe the desired future condition for the trails within the park and not necessarily a trail's current condition.

### Routes and Unmanaged Trails

The recommendations in the following trail matrices pertain to trails where the park has identified clear management intent for their future development. Some commonly used areas are not included in these matrices. These areas are typically social trails or routes that the park is consciously choosing not to commit resources to or manage for visitor use. This may be for resource protection purposes or to preserve a level of challenge or experience for those with the skills and desire to use these areas. Some of these routes are used enough to be considered class 1 trails. A map included in this plan as Appendix D shows the approximate location of some of these routes.

### Trail Matrix Organization

The individual fields that make up the trail matrices are described below. The maps included with the trail matrices are provided to facilitate understanding of the management intent for a particular trail or trail segment and are not intended to be used for any other purpose. The trail alignments depicted on the maps are approximate and may vary as trails are improved and rerouted.

**ID Number-** Correlates the table description to a trail or trail segment depicted on the maps.

**Map Number-** Corresponds with the map depicting the trail.

**Trail Name/Segment-** The name of the trail is entered in this field. Where a trail is segmented for a specific reason (different trail class or design parameter), the name of the trail and trail segment will appear.

**Trail Type-** This field indicates what type of trail is being discussed. There will always be only one type per trail or trail segment so that managers can assign specific design parameters and management needs for a particular use or season. Where the same trail has various types, the trail will be listed individually for that type.

1 **Designed Use-** This describes the intended use that controls the geometric design of the trail  
2 and determines the subsequent maintenance parameters for the trail. There is only one  
3 designed use per trail or trail segment. A trail may be actively managed for more than one  
4 use and various uses may be permitted but it has only one design driver that determines the  
5 technical specifications for that trail.  
6

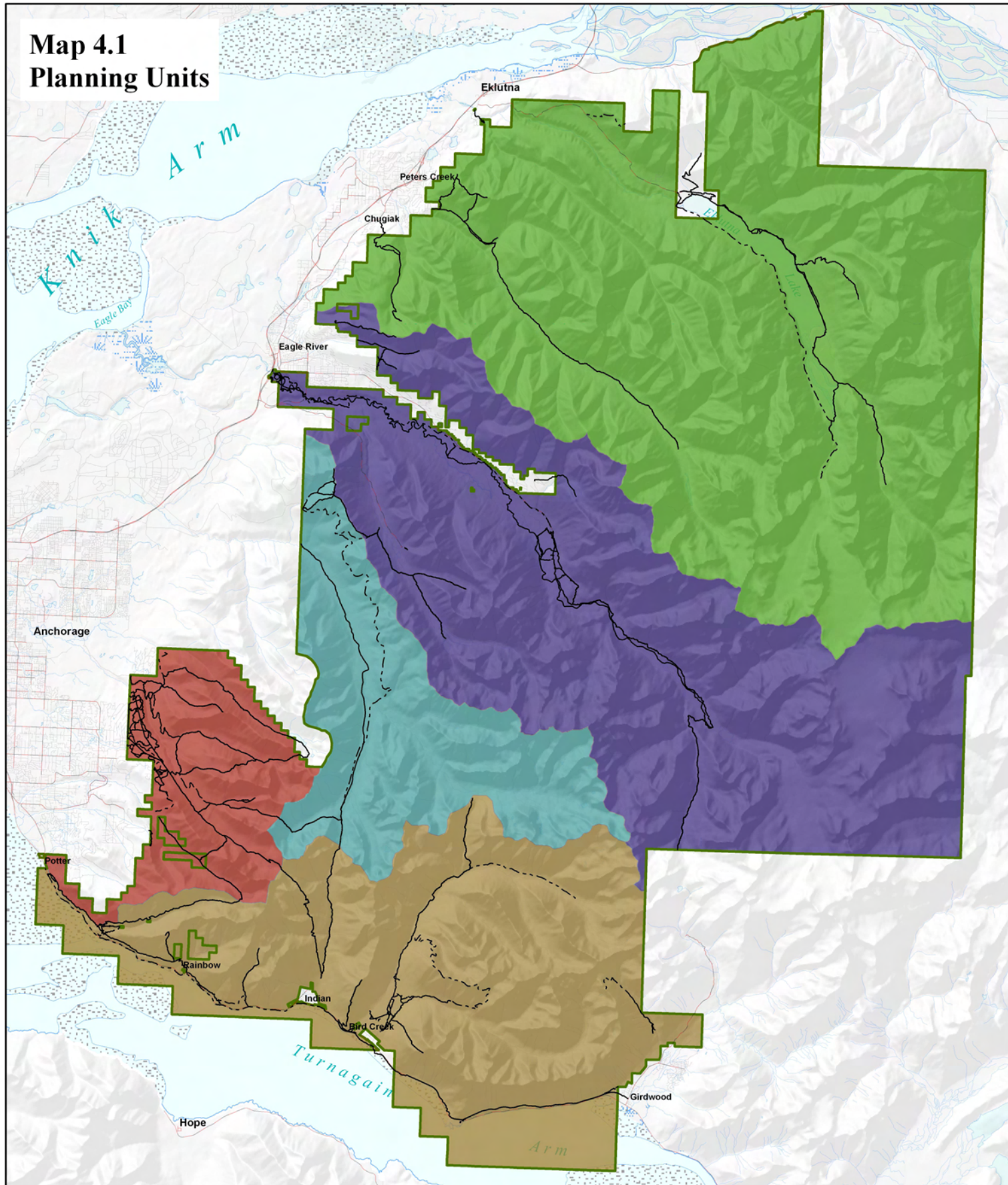
7 **Managed Use-** This describes the modes of travel that are actively managed on a particular  
8 trail indicating the management decision or intent to accommodate and encourage those uses  
9 on a specific trail. Additional uses besides what is listed may be permitted on a trail but this  
10 field simply alerts users to the uses that are primarily intended on a trail.  
11

12 **Trail Class-** The class describes the scale of trail development representing the intended  
13 design and management standards of a trail. There is only one trail class per trail or trail  
14 segment. They define a typical scenario or combined factors and exceptions within the class  
15 may occur but the class that most closely fits is chosen.  
16

17 **Approximate Distance-** The approximate distance of a trail or trail segment will be entered  
18 in this field in miles.  
19

20 **Comments-** Contains additional information about a trail.  
21  
22

**Map 4.1**  
**Planning Units**



**Planning Units**

- Eklutna-Peters Creek Unit
- Eagle River Unit
- Ship Creek Unit
- Hillside Unit
- Turnagain Arm Unit
- ▬ CSP Legal Boundary (AS41.21.121)
- Trail
- - - Proposed Trail

# CHUGACH STATE PARK

0 2 4 8 Miles



### Eklutna-Peters Creek Unit

This unit is in the northern most part of the study area encompassing several drainages including Eklutna River, Thunderbird Creek, Peters Creek, Little Peters Creek and portions of Hunter Creek. The terrain in the area is dominated by these five river valleys and the surrounding rugged mountain areas. The unit contains Eklutna Lake, the largest water body within Chugach State Park and a very popular recreation area.

ID#	Map #	Trail Name/Segment	Trail Type (standard terra, snow, water)	Designed Use	Managed Use	Trail Class	Approx. Distance	Comments
100	4.2	Mt. POW/MIA Trail (New Trail)	Terra	Hiker-Pedestrian	Hiker	2	1.9 Miles	
101a	4.2	Twin Peaks Trail- Eklutna Lakeside Trail junction to Scenic Overlook	Terra	Hiker-Pedestrian	Hiker	3	0.4 Miles	
101b	4.2	Twin Peaks Trail- Scenic Overlook to above tree line	Terra	Hiker-Pedestrian	Hiker	2	2.1 Miles	
102	4.2	Eydlu Bena Loop	Terra	Hiker-Pedestrian	Hiker	3	1.3 Miles	
103	4.2	Eklutna Lake Boat Launch	Terra	Hiker-Pedestrian	Hiker	4	160 Feet	
104	4.2	Eklutna Lake Spillway Trail	Terra	Bicycle	Bicycle; Hiker	4	0.7 Miles	Requires a regulation change to allow bicycles.
105	4.2	Eklutna Spillway and Lakeside Loop ATV Access Trail (New Trail)	Terra	All-Terrain Vehicle	ATV; Pack & Saddle; Hiker; Bicycle	4	0.3 Miles	Requires a regulation change to allow off-road vehicles and bicycles.
106	4.2	Eklutna Lake Spillway and Lakeside Loop Access Trail	Terra	All-Terrain Vehicle	ATV; Pack & Saddle; Hiker; Bicycle	4	0.4 Miles	Trail should be managed for Bicycle Class 4 until the Loop Trail (ID# 107) is constructed. Requires a regulation change to allow off-road vehicles and bicycles.
107	4.2	Eklutna Lakeside Loop Trail (New Trail)	Terra	All-Terrain Vehicle	ATV; Pack & Saddle; Hiker; Bicycle	4	10.5 Miles	Requires a regulation change to allow off-road vehicles and bicycles.
108a	4.2	Eklutna Lakeside ATV Access Trail	Terra	All-Terrain Vehicle	ATV; Pack & Saddle; Hiker; Bicycle	4	0.5 Miles	



ID#	Map #	Trail Name/Segment	Trail Type (standard terra, snow, water)	Designed Use	Managed Use	Trail Class	Approx. Distance	Comments
108b	4.3	Eklutna Lakeside ATV Access Trail	Snow	Snowmobile	Snowmobile; Ski; Hiker; Bicycle	4	0.5 Miles	
109a	4.2	Eklutna Lakeside Access Trail	Terra	Bicycle	Bicycle; Hiker	4	120 Feet	
109b	4.3	Eklutna Lakeside Access Trail	Snow	Cross-Country Ski	Ski; Hiker; Bicycle	4	120 Feet	
110a	4.2	Eklutna Lakeside Trail	Terra	All-Terrain Vehicle	ATV; Pack & Saddle; Hiker; Bicycle	4	12.0 Miles	
110b	4.3	Eklutna Lakeside Trail	Snow	Snowmobile	Snowmobile; Ski; Hiker; Bicycle	4	12.0 Miles	
111a	4.2	Eklutna Lower Lakeside Trail	Terra	Bicycle	Bicycle; Hiker	4	4.9 Miles	
111b	4.3	Eklutna Lower Lakeside Trail	Snow	Cross-Country Ski	Ski; Hiker; Bicycle	3	4.9 Miles	
112a	4.2	Bold Ridge Trail- Eklutna Lakeside Trail along old roadbed	Terra	Hiker-Pedestrian	Hiker	3	1.8 Miles	
112b	4.2	Bold Ridge Trail- End of old roadbed to above tree line	Terra	Hiker-Pedestrian	Hiker	2	2.2 Miles	
113	4.2	East Fork Eklutna River Trail	Terra	Hiker-Pedestrian	Hiker	2	4.5 Miles	
114a	4.2	Eklutna Glacier Trail- Lakeside Trail junction to terminus of glacial moraine	Terra	Hiker-Pedestrian	Hiker	2	0.8 Miles	
114b	4.2	Eklutna Glacier Trail- Along moraine (New Trail)	Terra	Hiker-Pedestrian	Hiker	1	1.6 Miles	
115a	4.2	Thunderbird Falls Trail- Trailhead to Viewing Platform	Terra	Hiker-Pedestrian	Hiker	5	0.7 Miles	Trail is intended to meet ADA standards and should be improved to maintain that standard with better viewing platform, interpretive signing and parking.

<b>ID#</b>	<b>Map #</b>	<b>Trail Name/Segment</b>	<b>Trail Type (standard terra, snow, water)</b>	<b>Designed Use</b>	<b>Managed Use</b>	<b>Trail Class</b>	<b>Approx. Distance</b>	<b>Comments</b>
115b	4.2	Thunderbird Falls Trail- Side trail to Falls	Terra	Hiker-Pedestrian	Hiker	3	0.2 Miles	
116	4.2	Bear Point-Mt. Eklutna Loop Trail	Terra	Hiker-Pedestrian	Hiker	2	4.6 Miles	Reroute the beginning of the trail onto state land.
117a	4.2	Peters Creek Valley Trail- Trailhead to Six Mile Creek	Terra	Bicycle	Bicycle; Hiker; Pack & Saddle	4	4.3 Miles	
117b	4.2	Peters Creek Valley Trail- Six Mile Creek to Wall Street Creek	Terra	Pack & Saddle	Pack & Saddle; Hiker; Bicycle	2	9.5 Miles	Requires a regulation change to allow bicycles.
117c	4.3	Peters Creek Valley Trail- Trailhead to Wall Street Creek/wilderness boundary	Snow	Snowmobile	Snowmobile; Ski; Hiker; Bicycle	3	13.8 Miles	
118a	4.2	Four Mile Creek Loop Trail	Terra	Pack & Saddle	Pack & Saddle; Hiker; Bicycle	3	1.4 Miles	
118b	4.3	Four Mile Creek Loop Trail	Snow	Cross-Country Ski	Ski; Hiker; Bicycle	2	1.4 Miles	
119a	4.2	Ptarmigan Valley Trail	Terra	Pack & Saddle	Pack & Saddle; Hiker; Bicycle	3	5.4 Miles	Requires a regulation change to allow bicycles.
119b	4.3	Ptarmigan Valley Trail	Snow	Snowmobile	Snowmobile; Ski; Hiker; Bicycle	3	5.3 Miles	

## Eagle River Unit

This unit sits in the broad U-shaped valley of Eagle River and its many tributaries. Since the unit lies only 10 miles north of Anchorage, it is easily reached by recreational users wanting to access the park and has also become a popular place to live as the housing inventory in Anchorage decreases. The Eagle River Nature Center and its associated trail system is a main attraction to school groups and residents of the municipality. Access in this unit is particularly challenging due to the steep-sided mountain terrain, associated avalanche concern, and increased development.

ID#	Map #	Trail Name/Segment	Trail Type (standard terra, snow, water)	Designed Use	Managed Use	Trail Class	Approx. Distance	Comments
200a	4.4	Mt. Baldy– Parking area to trail junction to Baldy	Terra	Hiker-Pedestrian	Hiker	4	0.1 Miles	Trail starts on Municipality of Anchorage (MOA) land. Coordinate trail reroute and management with MOA.
200b	4.4	Mt. Baldy– Trail junction to summit	Terra	Hiker-Pedestrian	Hiker	3	1.9 Miles	Trail starts on MOA land. Coordinate trail reroute and management with MOA.
201	4.4	Blacktail Ptarmigan Rocks Trail- Mt. Baldy summit to Blacktail Ptarmigan Rocks	Terra	Hiker-Pedestrian	Hiker	2	0.6 Miles	
202	4.4	Meadow Creek Trail- Park boundary to headwaters	Terra	Pack & Saddle	Pack & Saddle; Hiker	2	2.4 Miles	Requires a regulation change to allow horses. Trail starts on private property.
203a	4.4	Mile High Saddle Trail- Mile Hi Trailhead to saddle	Terra	Hiker-Pedestrian	Hiker	3	0.5 Miles	
203b	4.4	Mile High Saddle Trail- Saddle to Meadow Creek Trail junction	Terra	Hiker-Pedestrian	Hiker	2	0.5 Miles	
204	4.4	Mile High Ridge- Mile High Saddle Trail junction to park boundary	Terra	Hiker-Pedestrian	Hiker	2	0.2 Miles	
205	4.4	Mount Magnificent Trail	Terra	Hiker-Pedestrian	Hiker	2	0.8 Miles	
206a	4.4	North Fork Eagle River Boat Launch	Terra	Hiker-Pedestrian	Hiker	4	250 Feet	
206b	4.5	North Fork Eagle River Boat Launch	Snow	Snowmobile	Snowmobile; Ski; Hiker	4	250 Feet	

ID#	Map #	Trail Name/Segment	Trail Type (standard terra, snow, water)	Designed Use	Managed Use	Trail Class	Approx. Distance	Comments
207	4.4	North Fork Eagle River Access Trail	Terra	Hiker-Pedestrian	Hiker	3	0.5 Miles	
208	4.4	Eagle River- Crow Pass Trail river ford to Eagle River Campground	Water	Watercraft	Non-motorized Watercraft	2*	28.3 Miles	Sign Echo Bend, Rapids Camp, and Campground Rapid take-out. Trail incorporates the portage trail around Campground Rapid. *Note: Trail class does not refer to river difficulty rating scale
209	4.6	Ram Valley Trail	Terra	Hiker-Pedestrian	Hiker	2	2.1 Miles	Acquisition of a 300 ft trail easement across private property is needed for a portion of the trail.
210a	4.6	Rodak Nature Loop Trail	Terra	Hiker-Pedestrian	Hiker	5	0.8 Miles	Trail provides ADA access to educational facility and large viewing platforms.
210b	4.7	Rodak Nature Loop Trail	Snow	Cross-Country Ski	Ski; Hiker	4	0.7 Miles	
211a	4.6	Albert Loop Trail	Terra	Hiker-Pedestrian	Hiker	4	2.6 Miles	
211b	4.7	Albert Loop Trail	Snow	Cross-Country Ski	Ski; Hiker	4	2.1 Miles	
211c	4.7	Albert Loop Trail- Parking Area to Eagle River	Snow	Snowmobile	Snowmobile; Ski; Hiker	4	0.5 Miles	
212	4.6	Albert Loop Eagle River Access	Terra	Hiker-Pedestrian	Hiker	3	0.1 Miles	
213a	4.6	River Loop Trail	Terra	Hiker-Pedestrian	Hiker	3	0.2 Miles	
213b	4.7	River Loop Trail	Snow	Cross-Country Ski	Ski; Hiker	3	0.2 Miles	
214a	4.6	River Loop Yurt Trail	Terra	Hiker-Pedestrian	Hiker	4	0.2 Miles	
214b	4.7	River Loop Yurt Trail	Snow	Cross-Country Ski	Ski; Hiker	4	0.2 Miles	



ID#	Map #	Trail Name/Segment	Trail Type (standard terra, snow, water)	Designed Use	Managed Use	Trail Class	Approx. Distance	Comments
215a	4.6	Crow Pass/Iditarod Trail- Four Corners to Rapids Camp	Terra	Hiker-Pedestrian	Hiker	4	1.0 Miles	
215b	4.7	Crow Pass/Iditarod Trail- Four Corners to Rapids Camp	Snow	Cross-Country Ski	Ski; Hiker	4	1.0 Miles	
216a	4.6	Cabin Trail	Terra	Hiker-Pedestrian	Hiker	4	0.1 Miles	
216b	4.7	Cabin Trail	Snow	Cross-Country Ski	Ski; Hiker	4	0.1 Miles	
217a	4.6	Four Corners-Albert Reroute Trail (New Trail)	Terra	Hiker-Pedestrian	Hiker	4	0.5 Miles	Trail provides an alternative to the segment of the Albert Loop Trail that is closed seasonally due to bear activity.
217b	4.7	Four Corners-Albert Reroute Trail (New Trail)	Snow	Cross-Country Ski	Ski; Hiker	4	0.5 Miles	
218a	4.6	Four Corners Loop Trail	Terra	Hiker-Pedestrian	Hiker	4	0.1 Miles	
218b	4.7	Four Corners Loop Trail	Snow	Cross-Country Ski	Ski; Hiker	2	0.1 Miles	
219a	4.6	Crow Pass/Iditarod Trail- Rapids Camp to Park Boundary near Pass	Terra	Hiker-Pedestrian	Hiker	3	16.3 Miles	Trail from park boundary to Crow Pass Trailhead is on US Forest Service land.
219b	4.7	Crow Pass/Iditarod Trail-Rapids Camp to Echo Bend	Snow	Cross-Country Ski	Ski; Hiker	3	1.2 Miles	
220a	4.6	Dew Mound Trail	Terra	Hiker-Pedestrian	Hiker	3	3.1 Miles	
220b	4.7	Dew Mound Trail	Snow	Cross-Country Ski	Ski; Hiker	2	3.1 Miles	
221a	4.6	Mountain Meadow Trail	Terra	Hiker-Pedestrian	Hiker	2	0.3 Miles	
221b	4.7	Mountain Meadow Trail	Snow	Cross-Country Ski	Ski; Hiker	2	0.3 Miles	
222a	4.6	Rapids Camp Loop	Terra	Hiker-Pedestrian	Hiker	2	0.5 Miles	
222b	4.7	Rapids Camp Loop	Snow	Cross-Country Ski	Ski; Hiker	2	0.5 Miles	

<b>ID#</b>	<b>Map #</b>	<b>Trail Name/Segment</b>	<b>Trail Type (standard terra, snow, water)</b>	<b>Designed Use</b>	<b>Managed Use</b>	<b>Trail Class</b>	<b>Approx. Distance</b>	<b>Comments</b>
223a	4.4 4.6	Eagle River Greenbelt Pathway– Glenn Highway to ERNC (New Trail)	Terra	Bicycle	Bicycle; Hiker	5	14.5 Miles	Requires a regulation change to allow bicycles.
223b	4.5	Eagle River Greenbelt Pathway– Glenn Highway to Briggs Bridge (New Trail)	Snow	Nordic Ski	Ski; Hiker	5	5.3 Miles	
224a	4.4	Eagle River Campground Trail System (New Trail)	Terra	Bicycle	Bicycle; Hiker	3	0.5 Miles	
224b	4.5	Eagle River Campground Trail System	Snow	Nordic Ski	Ski; Hiker	5	1.5 Miles	
224c	4.5	Eagle River Campground Trail System (New Trail)	Snow	Nordic Ski	Ski; Hiker	5	1.7 Miles	
224d	4.4	Eagle River Campground Trail System- Kids Bike Skills Course (New Trail)	Terra	Bicycle	Bicycle	4	0.9 Miles	Includes a separated bike path paralleling a portion of the campground road.
225a	4.4	Eagle River Boat Launch	Terra	Hiker-Pedestrian	Hiker	4	310 Feet	
225b	4.5	Eagle River Boat Launch	Snow	Snowmobile	Snowmobile; Ski; Hiker	4	310 Feet	
226	4.4	Briggs Bridge Eagle River Access Trail	Terra	Hiker-Pedestrian	Hiker	3	0.1 Miles	
227a	4.8	South Fork Eagle River Trail- Trailhead to Hunter Pass Trail junction	Terra	Pack & Saddle	Pack & Saddle; Hiker; Bicycle	3	0.2 Miles	Requires a regulation change to allow bicycles.
227b	4.8	South Fork Eagle River Trail- Hunter Pass Trail junction to footbridge over South Fork	Terra	Bicycle	Bicycle; Pack & Saddle; Hiker	3	1.8 Miles	Requires a regulation change to allow bicycles.
227c	4.8	South Fork Eagle River Trail- Footbridge over South Fork to Eagle Lake	Terra	Bicycle	Pack & Saddle; Hiker; Bicycle	2	2.5 Miles	Requires a regulation change to allow bicycles.
227d	4.8	South Fork Eagle River Trail- Eagle Lake to Symphony Lake	Terra	Hiker-Pedestrian	Hiker	2	0.6 Miles	

<b>ID#</b>	<b>Map #</b>	<b>Trail Name/Segment</b>	<b>Trail Type</b> (standard terra, snow, water)	<b>Designed Use</b>	<b>Managed Use</b>	<b>Trail Class</b>	<b>Approx. Distance</b>	<b>Comments</b>
228	4.8	Hunter Pass Trail- South Fork Eagle River Trail junction to pass	Terra	Pack & Saddle	Pack & Saddle; Hiker; Bicycle	3	0.5 Miles	Requires a regulation change to allow bicycles.
229	4.8	Hanging Valley Trail- South Fork Eagle River Trail to top of hill	Terra	Hiker-Pedestrian	Hiker	2	2.0 Miles	
230	4.8	Harp Mountain Trail (New Trail)	Terra	Hiker-Pedestrian	Hiker	2	0.3 Miles	This trail reroutes use onto state land.
231	4.6	Raven Creek-Heidi's Knob Trail	Terra	Hiker-Pedestrian	Hiker	2	0.6 Miles	

## Ship Creek Unit

The Ship Creek Unit has two main valleys, the main fork and north forks of Ship Creek that contain numerous lakes and small tributaries. The unit, surrounded by the peaks of the South Fork of Eagle River, Hillside and Turnagain Arm areas, is zoned “watershed” by the Municipality of Anchorage and is a major source of water for Anchorage. Currently, the main way to access the unit is via a military road that takes you to the Arctic Valley Ski Area. The unit receives most of its use in the winter. Access to and activities within this unit will be carefully controlled to protect its value as a watershed.

ID#	Map #	Trail Name/Segment	Trail Type (standard terra, snow, water)	Designed Use	Managed Use	Trail Class	Approx. Distance	Comments
300	4.8	Muktuk Marston Memorial Overlook Trail	Terra	Pack & Saddle	Pack & Saddle; Bicycle; Hiker	4	0.4 Miles	Requires a regulation change to allow bicycles.
301	4.8	Muktuk Marston Trail (New Trail)	Terra	Pack & Saddle	Pack & Saddle; Bicycle; Hiker	3	3.6 Miles	Requires a regulation change to allow bicycles.
302a	4.8	Rendezvous Peak Trail- Trailhead to saddle between Rendezvous and Mt. Gordon Lyon	Terra	Hiker	Bicycle; Hiker	3	1.2 Miles	Requires a regulation change to allow bicycles.
302b	4.8	Rendezvous Peak Trail- Saddle to Rendezvous Peak loop back to main trail	Terra	Hiker-Pedestrian	Hiker	2	1.2 Miles	
302c	4.8	Rendezvous Peak Trail- Saddle to Mt. Gordon Lyon	Terra	Hiker-Pedestrian	Hiker	2	0.5 Miles	
303	4.8	Rendezvous Ridge Trail- Muktuk Marston Overlook Trail to Rendezvous Peak to Hunter Pass Trail junction	Terra	Bicycle	Bicycle; Hiker	2	3.5 Miles	Requires a regulation change to allow bicycles.
304a	4.8	Ship Creek Trail- Muktuk Marston Trail junction to Ship Lake Trail junction (New Trail)	Terra	Pack & Saddle	Pack & Saddle; Hiker	2	13.5 Miles	
304b	4.8	Ship Creek Trail- Ship Lake Trail junction to Indian Creek Pass	Terra	Pack & Saddle	Pack & Saddle; Hiker	2	1.0 Miles	



<b>ID#</b>	<b>Map #</b>	<b>Trail Name/Segment</b>	<b>Trail Type</b> (standard terra, snow, water)	<b>Designed Use</b>	<b>Managed Use</b>	<b>Trail Class</b>	<b>Approx. Distance</b>	<b>Comments</b>
305	4.14	Arctic Valley to Indian Creek Pass Traverse	Snow	Cross-Country Ski	Ski; Hiker	2	11.0 Miles	The first 3 miles of trail is on military land. Trail includes a portion of the Arctic to Indian Traverse.
306	4.8	Ship Lake Trail	Terra	Hiker-Pedestrian	Hiker	1	2.7 Miles	

## Hillside Unit

This unit is one of the most popular recreational areas in the study area and receives a great deal of recreational pressure along its western edge. It contains the drainages of Campbell and Rabbit Creeks, and numerous lakes. The Campbell Creek drainage is an important watershed area that feeds underground aquifers that are a major source of water for Anchorage via deep wells. Because of the area's popularity for recreation and desirability for development, access in this unit will always be an issue.

ID#	Map #	Trail Name/Segment	Trail Type (standard terra, snow, water)	Designed Use	Managed Use	Trail Class	Approx. Distance	Comments
400a	4.10	Lost Cabin Valley Trail	Terra	Bicycle	Bicycle; Hiker	2	1.7 Miles	Requires a regulation change to allow bicycles.
400b	4.11	Lost Cabin Valley Trail	Snow	Cross-Country Ski	Ski; Hiker	2	1.7 Miles	
401a	4.9 4.10	Near Point Trail- Near Point Knoll Trailhead to junction with existing Near Point Trail (New Trail)	Terra	Bicycle	Bicycle; Hiker	3	1.1 Miles	The Near Point Knoll Trailhead will be located on the Campbell Canyon property if it is acquired. Requires a regulation change to allow bicycles.
401b	4.10	Near Point Trail- Wolverine Peak Trail junction to end of old homestead road	Terra	Bicycle	Bicycle; Hiker	3	0.4 Miles	
401c	4.11	Near Point Trail- Wolverine Peak Trail junction to end of old homestead road	Snow	Cross-Country Ski	Ski; Hiker; Bicycle	2	0.4 Miles	
401d	4.10	Near Point Trail- End of old homestead road to summit	Terra	Hiker-Pedestrian	Hiker	3	1.3 Miles	
402	4.9 4.10	Campbell Creek Canyon-Long Lake Trail	Terra	Hiker-Pedestrian	Hiker	2	5.9 Miles	
403	4.9 4.10	Wolverine Peak Trail- Near Point Trail junction to summit	Terra	Hiker-Pedestrian	Hiker	3	2.8 Miles	
404a	4.10	Wolverine Bowl Trail	Terra	Bicycle	Bicycle; Hiker	3	1.9 Miles	
404b	4.11	Wolverine Bowl Trail	Snow	Cross-Country Ski	Ski; Bicycle; Hiker	3	1.9 Miles	

ID#	Map #	Trail Name/Segment	Trail Type (standard terra, snow, water)	Designed Use	Managed Use	Trail Class	Approx. Distance	Comments
405a	4.10	Wolverine Bowl Ski Loop Trail	Terra	Hiker-Pedestrian	Hiker	3	0.5 Miles	
405b	4.11	Wolverine Bowl Ski Loop Trail	Snow	Cross-Country Ski	Ski; Hiker	2	0.5 Miles	
406a	4.10	Middle Fork Connector Trail - Wolverine Bowl Trail junction to Middle Fork Loop Trail (New Trail)	Terra	Bicycle	Bicycle; Hiker	3	0.7 Miles	Requires a regulation change to allow bicycles
406b	4.11	Middle Fork Connector Trail - Wolverine Bowl Trail junction to Middle Fork Loop Trail (New Trail)	Snow	Cross-Country Ski	Ski; Hiker; Bicycle	3	0.7 Miles	Requires a regulation change to allow bicycles
406c	4.10	Middle Fork Loop Trail	Terra	Bicycle	Bicycle; Hiker	3	5.1 Miles	Requires a regulation change to allow bicycles on entire trail
406d	4.11	Middle Fork Loop Trail	Snow	Cross-Country Ski	Ski; Hiker; Bicycle	3	5.1 Miles	Requires a regulation change to allow bicycles on entire trail
406e	4.9 4.10	Middle Fork Loop Extension – Middle Fork Loop Trail to Hidden Lake Trail (New Trail)	Terra	Bicycle	Bicycle; Hiker	3	1.9 Miles	Requires a regulation change to allow bicycles
406f	4.11	Middle Fork Loop Extension – Middle Fork Loop Trail to Hidden Lake Trail (New Trail)	Snow	Cross-Country Ski	Ski; Hiker; Bicycle	3	1.9 Miles	Requires a regulation change to allow bicycles
407a	4.10	Little Loop Trail	Terra	Hiker-Pedestrian	Hiker	3	0.3 Miles	
407b	4.11	Little Loop Trail	Snow	Cross-Country Ski	Ski; Hiker	3	0.3 Miles	
408	4.9 4.10	Williwaw Lakes Trail	Terra	Hiker-Pedestrian	Hiker	2	5.7 Miles	
409a	4.10	Spencer Loop Connector Trail (New Trail)	Terra	Bicycle	Bicycle; Hiker	3	0.3 Miles	Requires a regulation change to allow bicycles
409b	4.11	Spencer Loop Connector Trail (New Trail)	Snow	Nordic Ski	Ski; Skijor; Hiker	4	0.3 Miles	

ID#	Map #	Trail Name/Segment	Trail Type (standard terra, snow, water)	Designed Use	Managed Use	Trail Class	Approx. Distance	Comments
410a	4.10	Llama Trail	Terra	Pack & Saddle	Pack & Saddle; Bicycle; Hiker	2	0.3 Miles	
410b	4.11	Llama Trail	Snow	Nordic Ski	Ski, Skijor; Hiker	3	0.3 Miles	
411	4.10	Golden Grass Trail	Terra	Hiker-Pedestrian	Hiker	2	0.8 Miles	
412a	4.10	South Fork Rim Trail	Terra	Bicycle	Bicycle; Hiker	3	2.2 Miles	
412b	4.11	South Fork Rim Trail	Snow	Cross-Country Ski	Ski; Bicycle; Hiker	3	2.2 Miles	
413a	4.10	Panorama View Trail	Terra	Hiker-Pedestrian	Hiker	2	0.7 Miles	
413b	4.11	Panorama View Trail	Snow	Cross-Country Ski	Ski; Hiker	2	0.7 Miles	
414	4.10	Denali View Trail	Terra	Hiker-Pedestrian	Hiker	2	1.1 Miles	
415a	4.10	Alder Trail- Powerline Trail junction to Denali View Trail junction	Terra	Bicycle	Bicycle; Hiker	3	0.3 Miles	Requires a regulation change to allow bicycles. Abandon lower Alder Trail.
415b	4.10	Alder Trail- Denali View Trail junction to Hemlock Knob Trail near Gasline Trail junction (New Trail)	Terra	Bicycle	Bicycle; Hiker	3	1.1 Miles	Requires a regulation change to allow bicycles.
415c	4.11	Alder Trail- Powerline Trail junction to Denali View Trail junction	Snow	Nordic Ski	Ski, Skijor; Hiker	3	0.3 Miles	
415d	4.11	Alder Trail- Denali View Trail junction to Hemlock Knob Trail near Gasline Trail junction (New Trail)	Snow	Nordic Ski	Ski, Skijor; Hiker	3	1.1 Miles	
416a	4.10	White Spruce Trail	Terra	Pack & Saddle	Pack & Saddle; Bicycle; Hiker	3	0.7 Miles	
416b	4.11	White Spruce Trail	Snow	Cross-Country Ski	Ski; Hiker	3	0.7 Miles	



ID#	Map #	Trail Name/Segment	Trail Type (standard terra, snow, water)	Designed Use	Managed Use	Trail Class	Approx. Distance	Comments
417a	4.10	Blueberry Hollow Trail	Terra	Hiker-Pedestrian	Hiker	2	1.3 Miles	
417b	4.11	Blueberry Hollow Trail	Snow	Cross-Country Ski	Ski; Hiker	2	1.3 Miles	
418a	4.10	Hemlock Knob Trail	Terra	Hiker-Pedestrian	Hiker	2	0.8 Miles	
418b	4.11	Hemlock Knob Trail	Snow	Cross-Country Ski	Ski; Hiker	2	0.8 Miles	
419a	4.10	Gasline Trail- Prospect Heights Trailhead to Powerline Trail at Y junction	Terra	Bicycle	Bicycle; Hiker	4	3.0 Miles	
419b	4.11	Gasline Trail- Prospect Heights Trailhead to Upper O'Malley Trailhead	Snow	Cross-Country Ski	Ski; Hiker	2	1.5 Miles	
419c	4.11	Gasline Trail- Upper O'Malley Trailhead to Snowmobile Entrance/Exit Trail junction	Snow	Cross-Country Ski	Ski; Hiker	4	0.9 Miles	
419d	4.11	Gasline Trail- Snowmobile Entrance/Exit Trail junction to Powerline Pass Trail at Y junction	Snow	Snowmobile	Snowmobile; Ski; Hiker; Bicycle	4	0.7 Miles	
420	4.10	Upper O'Malley Spur Trail	Terra	Hiker-Pedestrian	Hiker	3	170 Feet	
421a	4.10	Silver Fern Trail	Terra	Bicycle	Bicycle; Hiker	4	0.6 Miles	
421b	4.11	Silver Fern Trail	Snow	Cross-Country Ski	Ski; Hiker; Bicycle	3	0.6 Miles	
421c	4.10	Silver Fern Loop Trail (New Trail)	Terra	Bicycle	Bicycle; Hiker	3	0.2 Miles	
421d	4.11	Silver Fern Loop Trail (New Trail)	Snow	Cross-Country Ski	Ski; Hiker; Bicycle	2	0.2 Miles	
422a	4.10	Shebanof Avenue Connector Trail	Terra	Bicycle	Bicycle; Hiker	2	0.2 Miles	Requires a regulation change to allow bicycles.
422b	4.11	Shebanof Avenue Connector Trail	Snow	Cross-Country Ski	Ski; Hiker	2	0.2 Miles	

ID#	Map #	Trail Name/Segment	Trail Type (standard terra, snow, water)	Designed Use	Managed Use	Trail Class	Approx. Distance	Comments
423a	4.11	Upper Huffman Snowmobile Two-way Entrance/Exit Trail	Snow	Snowmobile	Snowmobile	5	0.1 Miles	Reroute initial Snowmobile Entrance Trail out of trailhead.
423b	4.11	Upper Huffman Snowmobile Entrance Trail	Snow	Snowmobile	Snowmobile	2	0.5 Miles	
423c	4.11	Upper Huffman Snowmobile Exit Trail	Snow	Snowmobile	Snowmobile	2	0.4 Miles	
424a	4.10	Hemlock Spur Trail	Terra	Bicycle	Bicycle; Hiker	3	0.2 Miles	Requires a regulation change to allow bicycles.
424b	4.11	Hemlock Spur Trail	Snow	Nordic Ski	Ski, Skijor; Hiker	3	0.2 Miles	
424c	4.10	Hemlock Burn Trail (New Trail)	Terra	Bicycle	Bicycle; Hiker	3	2.1 Miles	Requires a regulation change to allow bicycles.
424d	4.11	Hemlock Burn Trail (New Trail)	Snow	Nordic Ski	Ski, Skijor; Hiker	3	2.1 Miles	
425a	4.9 4.10	Powerline Trail- Wolverine Bowl Trail junction to base of Powerline Pass near Green Lake	Terra	Pack & Saddle	Pack & Saddle; Bicycle; Hiker	4	8.3 Miles	
425b	4.11	Powerline Trail- Wolverine Bowl Trail junction to Gasline Trail at Y junction	Snow	Cross-Country Ski	Ski; Hiker; Bicycle	4	2.7 Miles	
425c	4.11	Powerline Trail- Gasline Trail at Y junction to seasonal snowmobile boundary markers	Snow	Snowmobile	Snowmobile; Ski; Hiker; Bicycle	4	1.4 Miles	
425d	4.11	Powerline Trail- Seasonal snowmobile boundary markers to base of Powerline Pass	Snow	Cross-Country Ski	Ski; Hiker; Bicycle	3	4.1 Miles	
425e	4.9	Powerline Pass Trail- Powerline Trail junction near Green Lake to Powerline Pass	Terra	Bicycle	Bicycle; Hiker	3	0.7 Miles	
426	4.10	Glen Alps Anchorage Overview Trail	Terra	Hiker-Pedestrian	Hiker	5	0.3 Miles	

ID#	Map #	Trail Name/Segment	Trail Type (standard terra, snow, water)	Designed Use	Managed Use	Trail Class	Approx. Distance	Comments
427a	4.10	Glen Alps Lower Powerline Access Trail	Terra	Pack & Saddle	Pack & Saddle; Bicycle; Hiker	4	0.4 Miles	
427b	4.11	Glen Alps Lower Powerline Access Trail	Snow	Cross-Country Ski	Ski; Hiker; Bicycle	3	0.4 Miles	
428a	4.10	Glen Alps Middle Powerline Access Trail	Terra	Bicycle	Bicycle; Hiker	4	0.5 Miles	
428b	4.11	Glen Alps Middle Powerline Access Trail	Snow	Cross-Country Ski	Ski; Hiker; Bicycle	3	0.5 Miles	
429	4.10	Flattop Access Trail	Terra	Hiker-Pedestrian	Hiker	4	0.2 Miles	
430	4.10	Powerline Access and Flattop Access Trails Connector Loop	Terra	Hiker-Pedestrian	Hiker	4	0.2 Miles	
431	4.10	Powerline Access and Flattop Access Trails Short Connector	Terra	Hiker-Pedestrian	Hiker	2	0.1 Miles	
432	4.10	Glen Alps Upper Powerline Access Trail	Terra	Hiker-Pedestrian	Hiker	2	0.5 Miles	
433	4.10	Blueberry Loop Trail	Terra	Hiker-Pedestrian	Hiker	4	1.0 Miles	
434	4.9 4.10	Flattop Mountain Trail	Terra	Hiker-Pedestrian	Hiker	4	1.0 Miles	
436	4.10	Little O'Malley Peak Trail	Terra	Hiker-Pedestrian	Hiker	2	0.8 Miles	.
437	4.9	Ballfield Trail	Terra	Hiker-Pedestrian	Hiker	2	2.5 Miles	
438a	4.9	Hidden Lake Trail- Powerline Trail junction to Middle Fork Loop Extension trail junction	Terra	Bicycle	Bicycle; Hiker	3	0.6 Miles	Requires a regulation change to allow bicycles.
438b	4.9	Hidden Lake Trail- Middle Fork Loop Extension trail junction to Hidden Lake	Terra	Hiker-Pedestrian	Hiker	3	2.1 Miles	
438c	4.11	Hidden Lake Trail	Snow	Cross-Country Ski	Ski; Hiker; Bicycle	3	0.6 Miles	
439	4.9	Ship Lake Pass Trail	Terra	Hiker-Pedestrian	Hiker	2	2.3 Miles	
441	4.9	Backside Flattop Trail (New Trail)	Terra	Hiker-Pedestrian	Hiker	3	1.1 Miles	

<b>ID#</b>	<b>Map #</b>	<b>Trail Name/Segment</b>	<b>Trail Type (standard terra, snow, water)</b>	<b>Designed Use</b>	<b>Managed Use</b>	<b>Trail Class</b>	<b>Approx. Distance</b>	<b>Comments</b>
442	4.9	Rabbit Lake Trail	Terra	Bicycle	Bicycle; Hiker	3	4.0 Miles	Requires a regulation change to allow bicycles.
443	4.9	Ptarmigan Pass Trail	Terra	Hiker-Pedestrian	Hiker	2	1.7 Miles	
444	4.9	Grandview Trail	Terra	Hiker-Pedestrian	Hiker	2	0.9 Miles	
445	4.9	McHugh Peak Trail (New Trail)	Terra	Hiker-Pedestrian	Hiker	3	Unknown	This new trail will be developed to McHugh Peak from a trailhead within the bubble area shown on the map. Since the trail alignment is dependent on the trailhead location which is not known yet, it is not depicted on the map.



## Turnagain Arm Unit

This is the most southern unit in the study area stretching along the tidelands of Turnagain Arm. Nearly all the creeks including Potter, McHugh, Rainbow, Falls, Indian and Bird flow in a southerly direction draining into Turnagain Arm. The Seward Highway stretches the length of this unit providing the primary means of access to the park.

ID#	Map #	Trail Name/Segment	Trail Type (standard terra, snow, water)	Designed Use	Managed Use	Trail Class	Approx. Distance	Comments
500	4.12	Turnagain Interpretative Trail	Terra	Hiker-Pedestrian	Hiker	4	0.4 Miles	
501a	4.12	Turnagain Arm Trail- Potter Creek Trailhead to Windy Corner Trailhead	Terra	Hiker-Pedestrian	Hiker	4	9.4 Miles	
501b	4.12	Turnagain Arm Trail- Windy Corner to Falls Creek (New Trail)	Terra	Hiker-Pedestrian	Hiker	3	1.3 Miles	
502	4.12	McHugh Creek Trail	Terra	Hiker-Pedestrian	Hiker	3	6.5 Miles	
503	4.12	McHugh Scenic Overlook	Terra	Hiker-Pedestrian	Hiker	5	0.1 Miles	
504	4.12	Boy Scout Rocks	Terra	Hiker-Pedestrian	Hiker	2	0.2 Miles	
505a	4.12	McHugh Loop Trail- West side	Terra	Hiker-Pedestrian	Hiker	2	1.5 Miles	
505b	4.12	McHugh Loop Trail- East side (New Trail)	Terra	Hiker-Pedestrian	Hiker	2	0.3 Miles	
506	4.12	Rainbow Peak Trail	Terra	Hiker-Pedestrian	Hiker	2	1.5 Miles	
507a	4.12	Falls Creek Trail- Trailhead to ridge	Terra	Hiker-Pedestrian	Hiker	3	1.9 Miles	
507b	4.12	Falls Creek Trail- Ridge to Falls Lake	Terra	Hiker-Pedestrian	Hiker	2	0.7 Miles	
508	4.12	Powerline Trail- Upper Indian Creek Trailhead to Powerline Pass	Terra	Bicycle	Bicycle; Hiker	2	5.0 Miles	
509a	4.12	Indian Valley Trail- Trailhead to Indian Creek Pass	Terra	Pack & Saddle	Pack & Saddle; Hiker	3	5.1 Miles	
509b	4.14	Indian Valley Trail- Trailhead to Indian Creek Pass	Snow	Cross-Country Ski	Ski; Hiker	2	6.1 Miles	Trail includes a portion of the Arctic to Indian Traverse.
510	4.12	Bird Ridge Trail	Terra	Hiker-Pedestrian	Hiker	2	2.4 Miles	

ID#	Map #	Trail Name/Segment	Trail Type (standard terra, snow, water)	Designed Use	Managed Use	Trail Class	Approx. Distance	Comments
511	4.12	Bird Ridge Interpretative Overlook Trail	Terra	Hiker-Pedestrian	Hiker	5	0.3 Miles	
512	4.12	Bird Ridge Access Trail	Terra	Hiker-Pedestrian	Hiker	4	0.1 Miles	
513	4.12	Bird Creek Access	Terra	Hiker-Pedestrian	Hiker	3	0.7 Miles	
514	4.12	Bird Creek Interpretative Trail	Terra	Hiker-Pedestrian	Hiker	3	0.2 Miles	
515a	4.13	Bird Creek Valley Trail System	Terra	All-Terrain Vehicle	ATV; Pack & Saddle; Hiker; Bicycle	4	11.7 Miles	This trail includes the valley segment of the Penguin Creek Trail up to the wilderness boundary.
515b	4.14	Bird Creek Valley Trail System	Snow	Snowmobile	Snowmobile; Ski; Hiker; Bicycle	4	11.7 Miles	This trail includes the valley segment of the Penguin Creek Trail up to the wilderness boundary.
515c	4.13	Bird Creek Valley Trail System-Campground Access (New Trail)	Terra	All-Terrain Vehicle	ATV; Pack & Saddle; Hiker; Bicycle	4	0.5 Miles	Trail to access proposed Bird Valley Campground.
515d	4.14	Bird Creek Valley Trail System-Campground Access (New Trail)	Snow	Snowmobile	Snowmobile; Ski; Hiker; Bicycle	4	0.5 Miles	Trail to access proposed Bird Valley Campground.
516	4.13	Bird Valley Falls Trail	Terra	Hiker-Pedestrian	Hiker	3	0.5 Miles	
517	4.13	Bird Pass Trail	Terra	Pack & Saddle	Pack & Saddle; Bicycle; Hiker	2	5.8 Miles	Trail begins at the wilderness boundary. Requires a regulation change to allow bicycles.
518	4.13	South Fork Bird Creek Trail (New Trail)	Terra	Pack & Saddle	Pack & Saddle; Bicycle; Hiker	2	4.2 Miles	Requires a regulation change to allow bicycles.
519a	4.13	Penguin Creek Trail	Terra	Bicycle	Bicycle; Hiker	2	0.7 Miles	Requires a regulation change to allow bicycles.
519b	4.13	Penguin Creek Trail (New Trail)	Terra	Bicycle	Bicycle; Hiker	2	7.6 Miles	Requires a regulation change to allow bicycles.
520	4.13	Penguin Peak Trail	Terra	Hiker-Pedestrian	Hiker	2	1.8 Miles	

ID#	Map #	Trail Name/Segment	Trail Type (standard terra, snow, water)	Designed Use	Managed Use	Trail Class	Approx. Distance	Comments
521	4.13	Bird Point Interpretative Trail	Terra	Hiker-Pedestrian	Hiker	5	0.1 Miles	
522a	4.12	Coastal Trail- Indian to Potter (New Trail)	Terra	Bicycle	Bicycle; Hiker	5	12.1 Miles	This trail is an extension of the Bird to Girdwood Trail. Requires a regulation change to allow bicycles on the extension portion.
522b	4.12 4.13	Indian to Girdwood National Recreation Trail	Terra	Bicycle	Bicycle; Hiker	5	13.2 Miles	
523	4.13	Beaver Pond Trail- Park boundary to Indian to Girdwood Trail junction	Terra	Bicycle	Bicycle; Hiker	3	0.6 Miles	Requires a regulation change to allow bicycles. Majority of trail on MOA Land.
524a	4.13	California Creek- Park boundary to valley floor near California Peak	Terra	Hiker-Pedestrian	Hiker	2	2.0 Miles	Initial trail on MOA land.
524b	4.13	California Creek- Valley floor to ridge (New Trail)	Terra	Hiker-Pedestrian	Hiker	2	1.6 Miles	
525	4.13	Abes Trail- Park boundary to California Creek Trail junction	Terra	Hiker-Pedestrian	Hiker	2	0.4 Miles	Initial trail on MOA land.

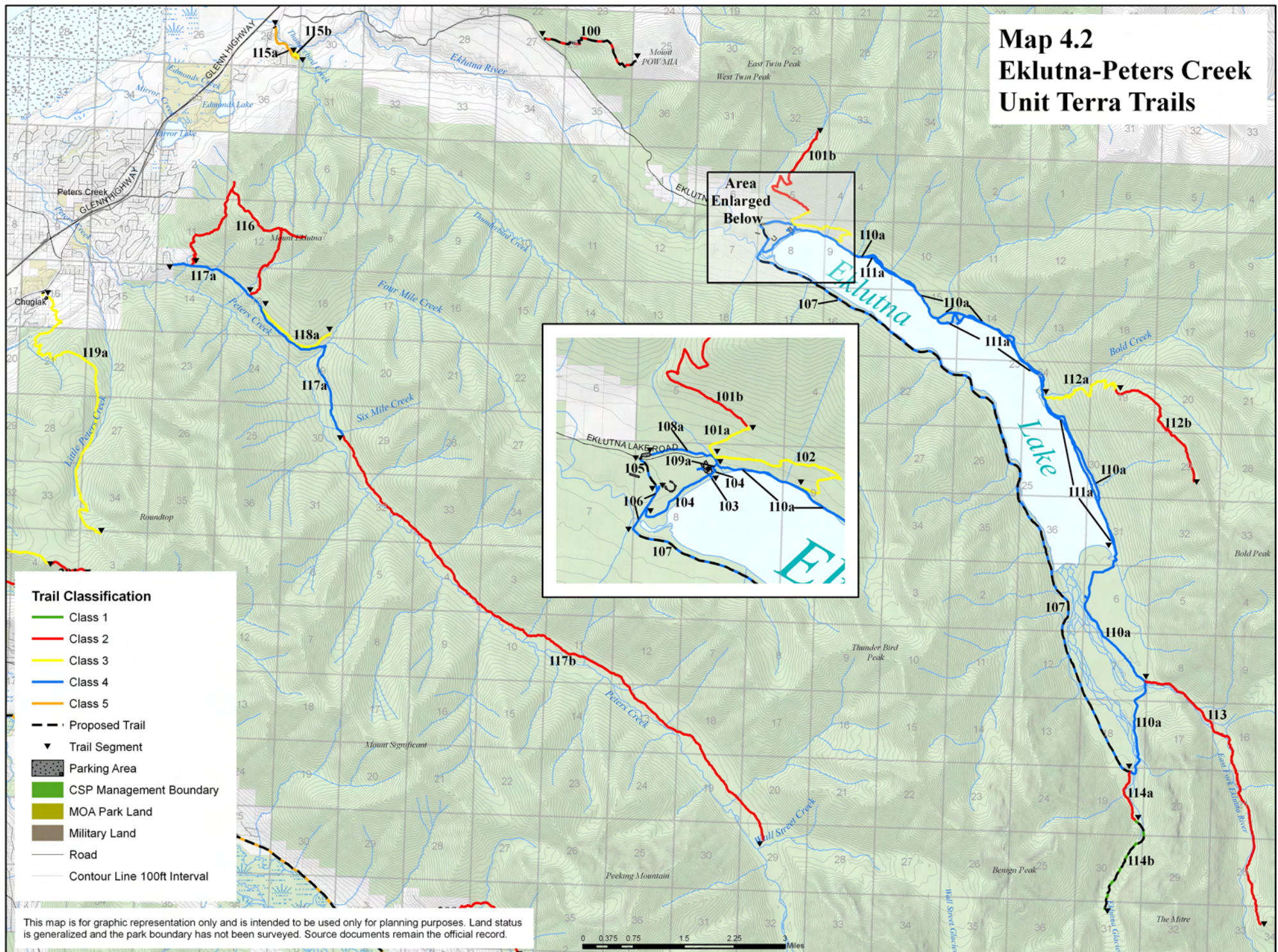
### Trail Management Recommendations Summary

The following table contains a summary of the trail management recommendations broken down by planning unit and trail type.

	<b>Planning Unit:</b>	Eklutna-Peters Creek	Eagle River	Ship Creek	Hillside	Turnagain Arm	<b>Total:</b>
<b>Trail Type:</b>							
Terra	Existing Trail Mileage	57.8	42.7	10.5	65.9	74.4	251.3
	New Trail Mileage	14.3	16.7	17.1	10.5	26.0	84.6
Snow	Existing Trail Mileage	37.9	11.6	11.0	31.0	17.8	109.3
	New Trail Mileage	0	7.5	0	6.3	0.5	14.3
Water	Existing Trail Mileage	0	28.3	0	0	0	28.3

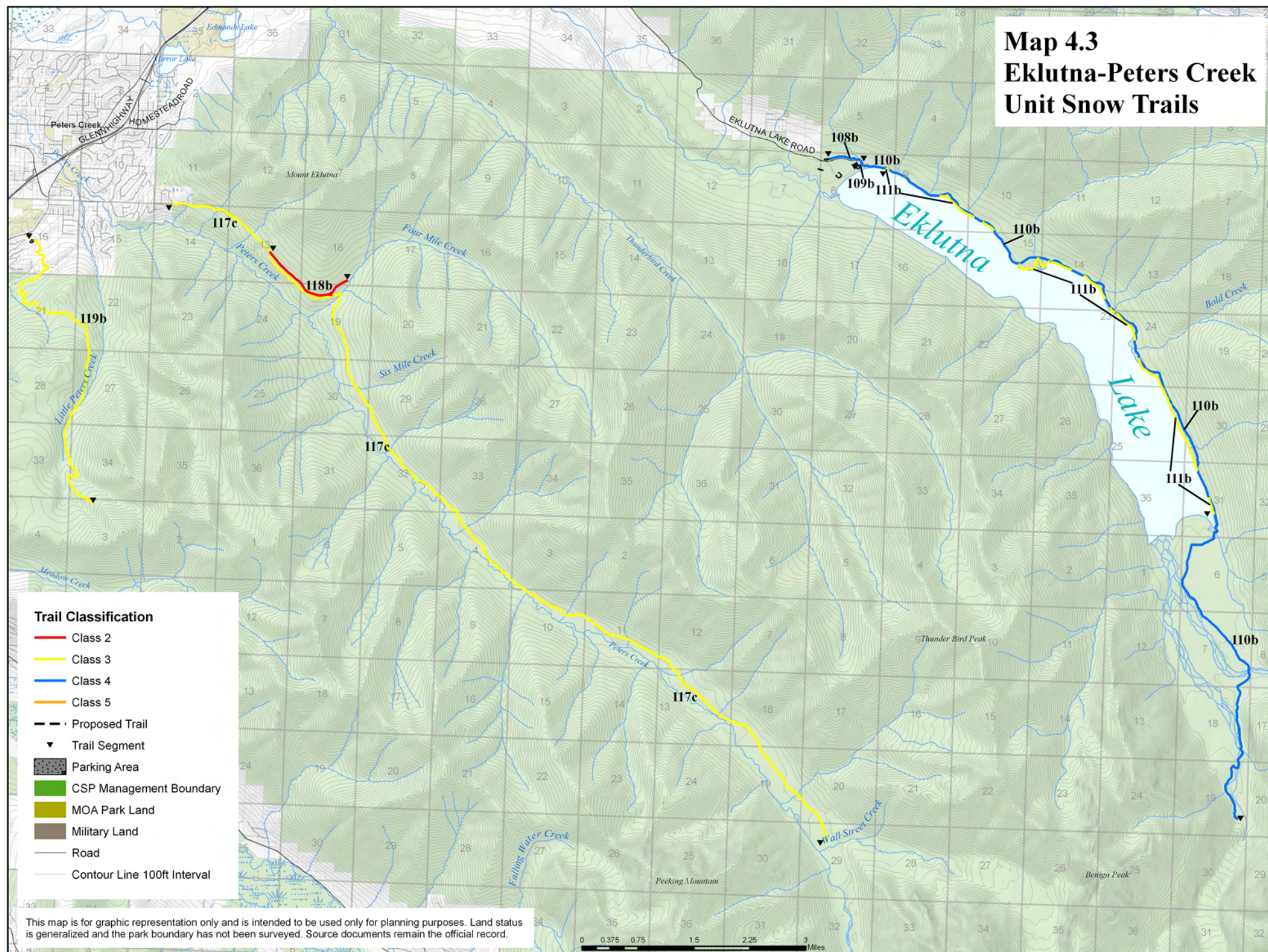


## Map 4.2 Eklutna-Peters Creek Unit Terra Trails



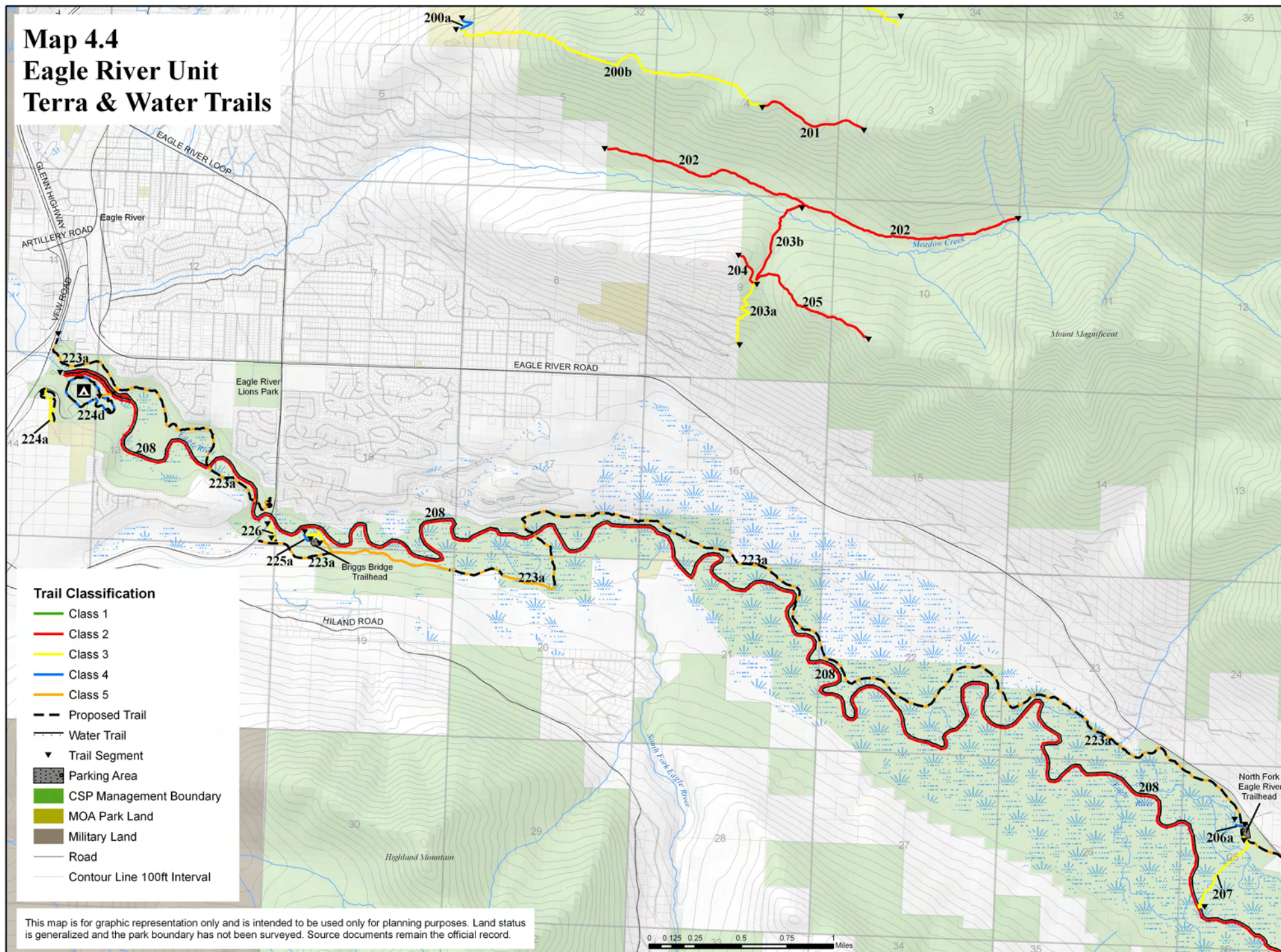


# Map 4.3 Eklutna-Peters Creek Unit Snow Trails



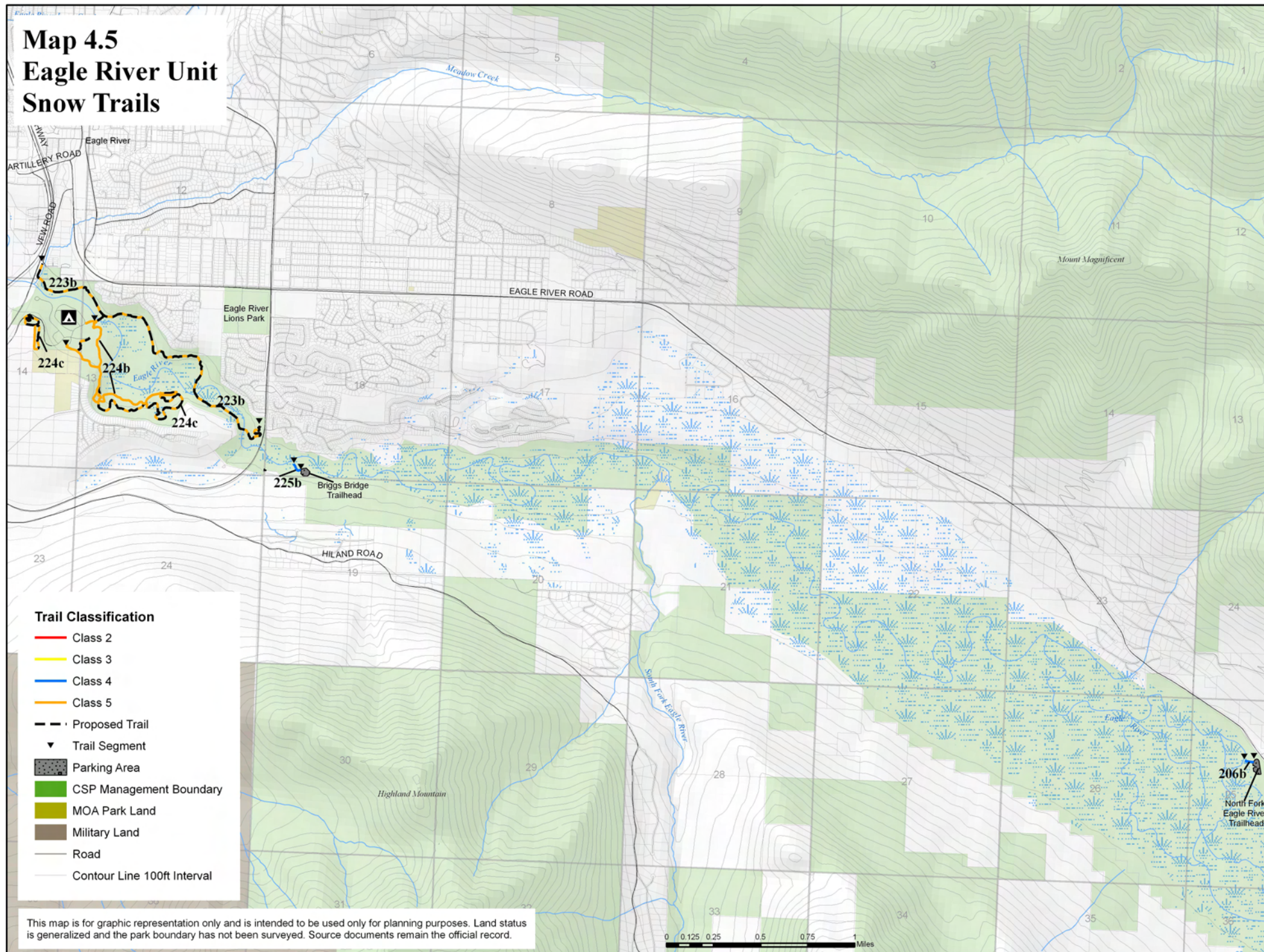


# Map 4.4 Eagle River Unit Terra & Water Trails



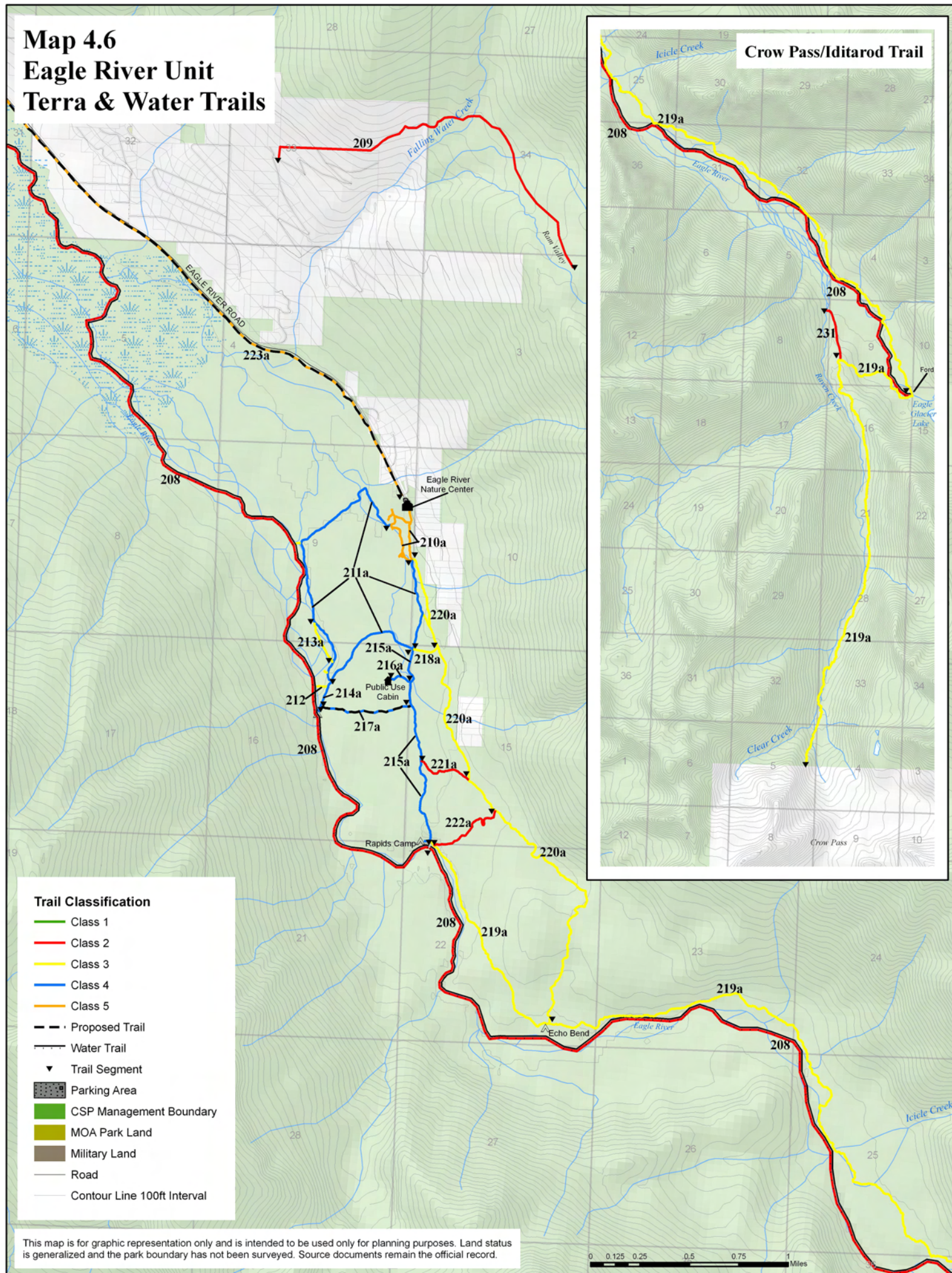


# Map 4.5 Eagle River Unit Snow Trails



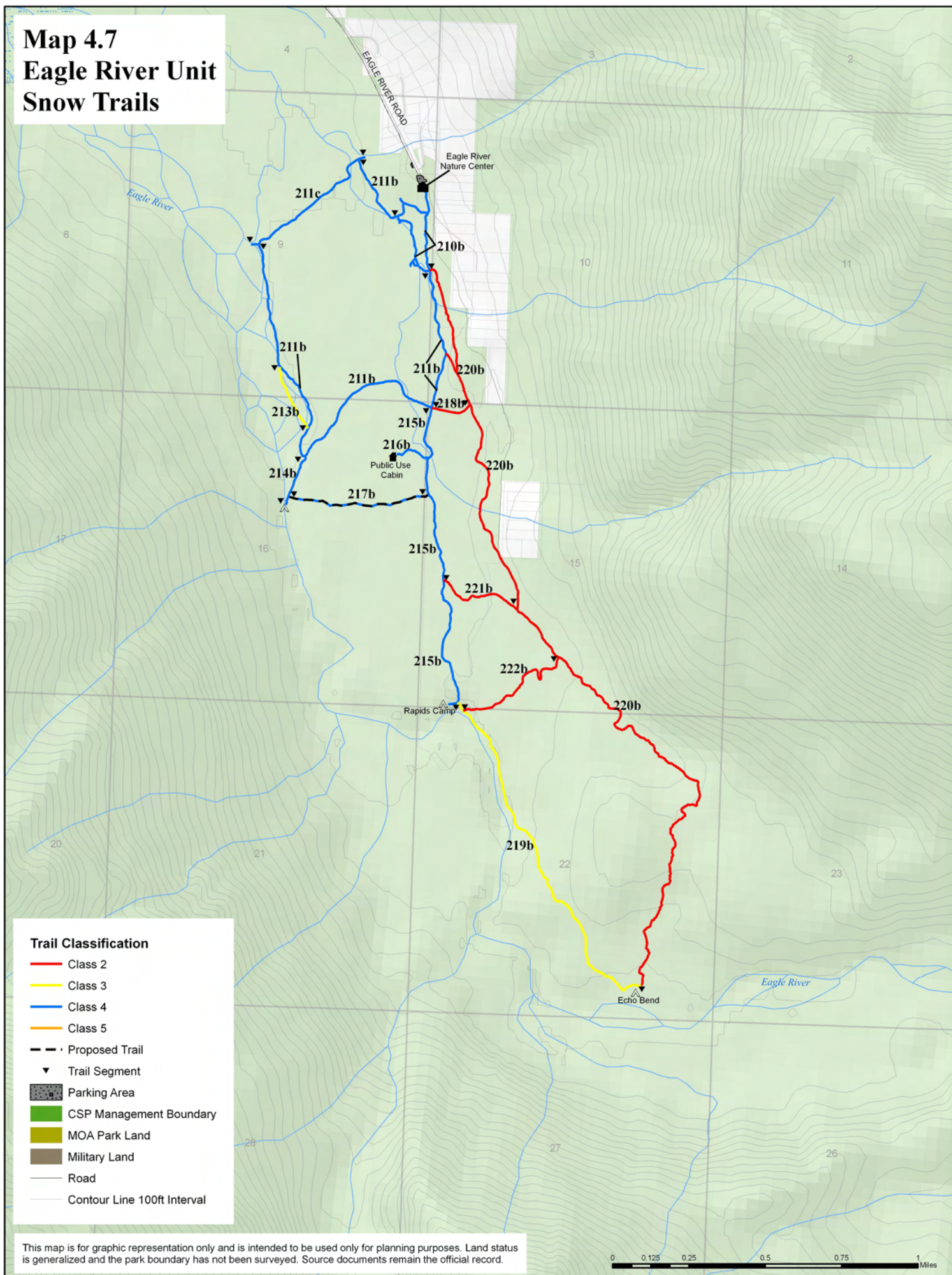


# Map 4.6 Eagle River Unit Terra & Water Trails



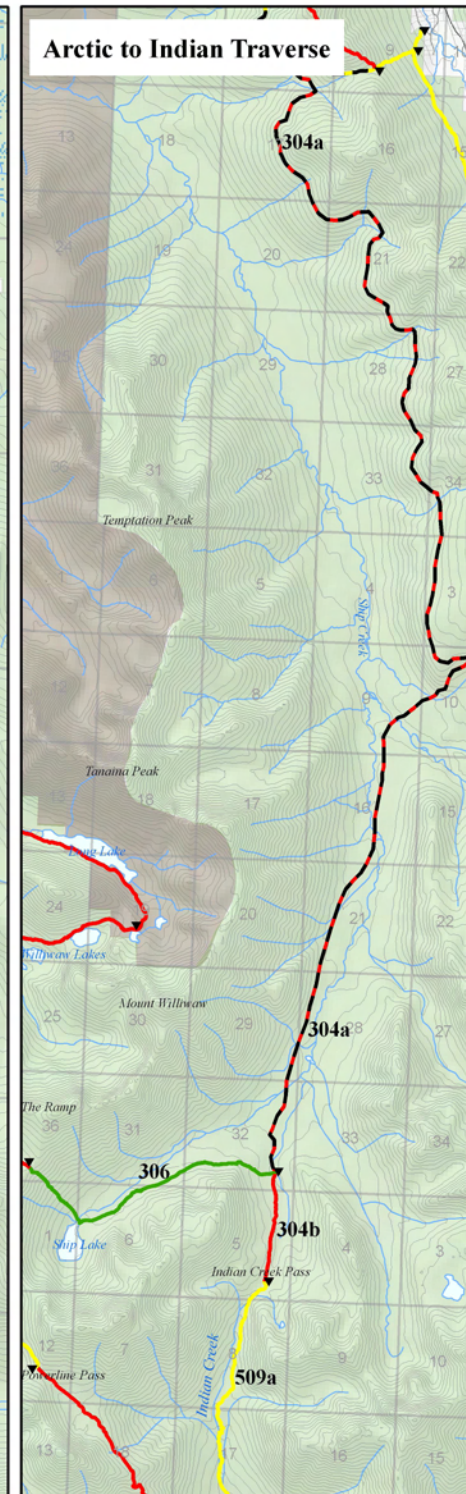
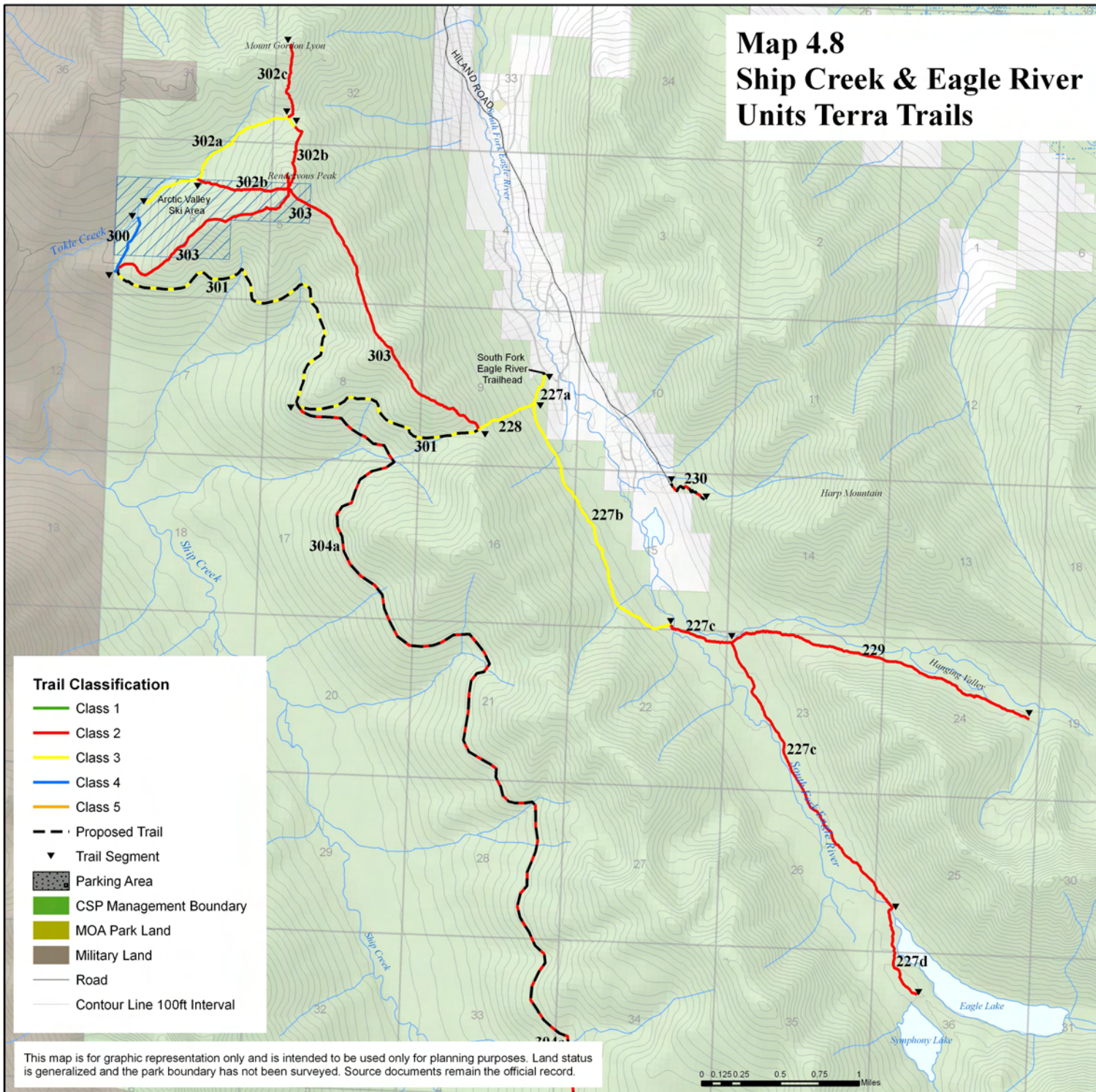


# Map 4.7 Eagle River Unit Snow Trails



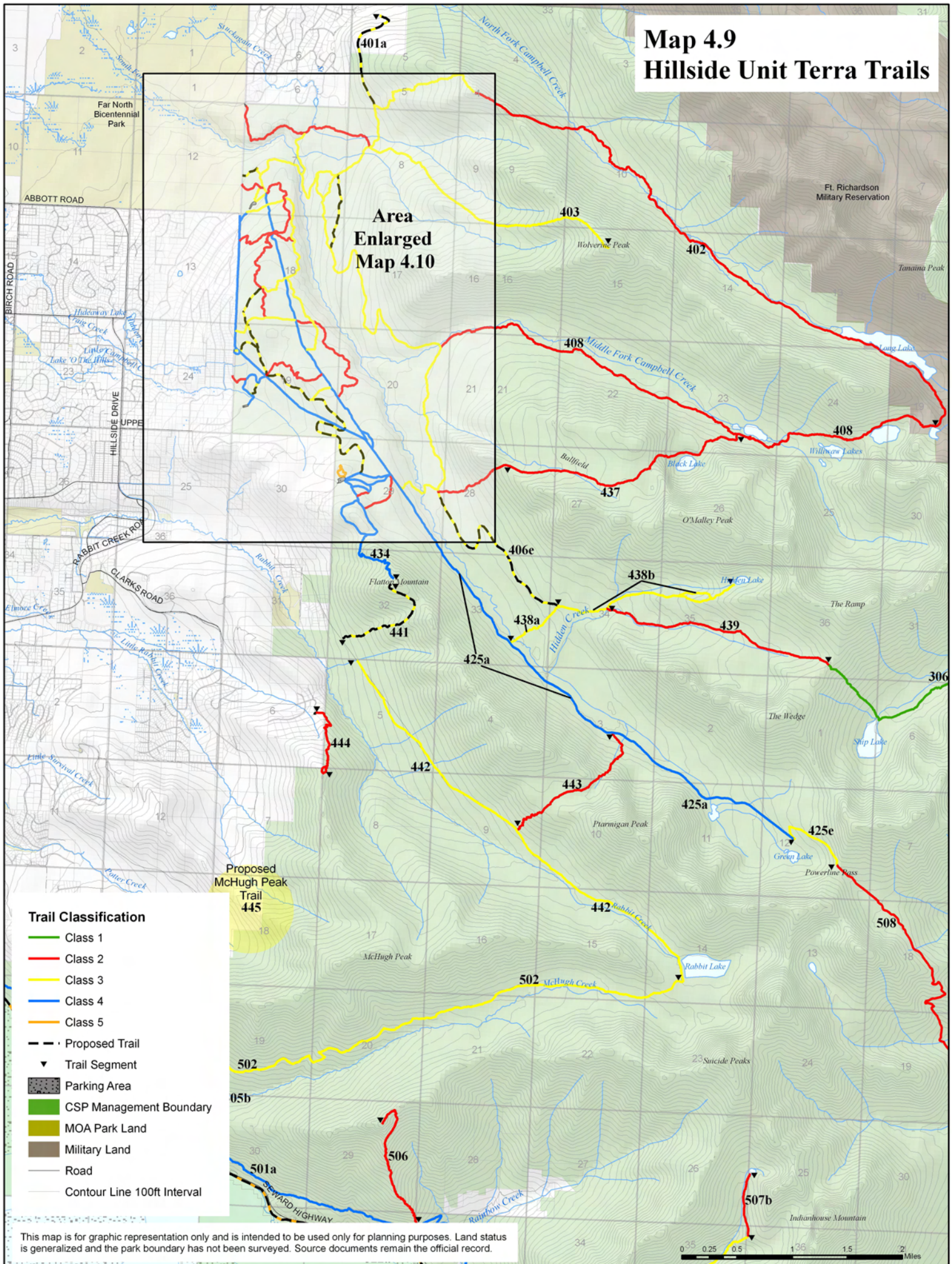


# Map 4.8 Ship Creek & Eagle River Units Terra Trails





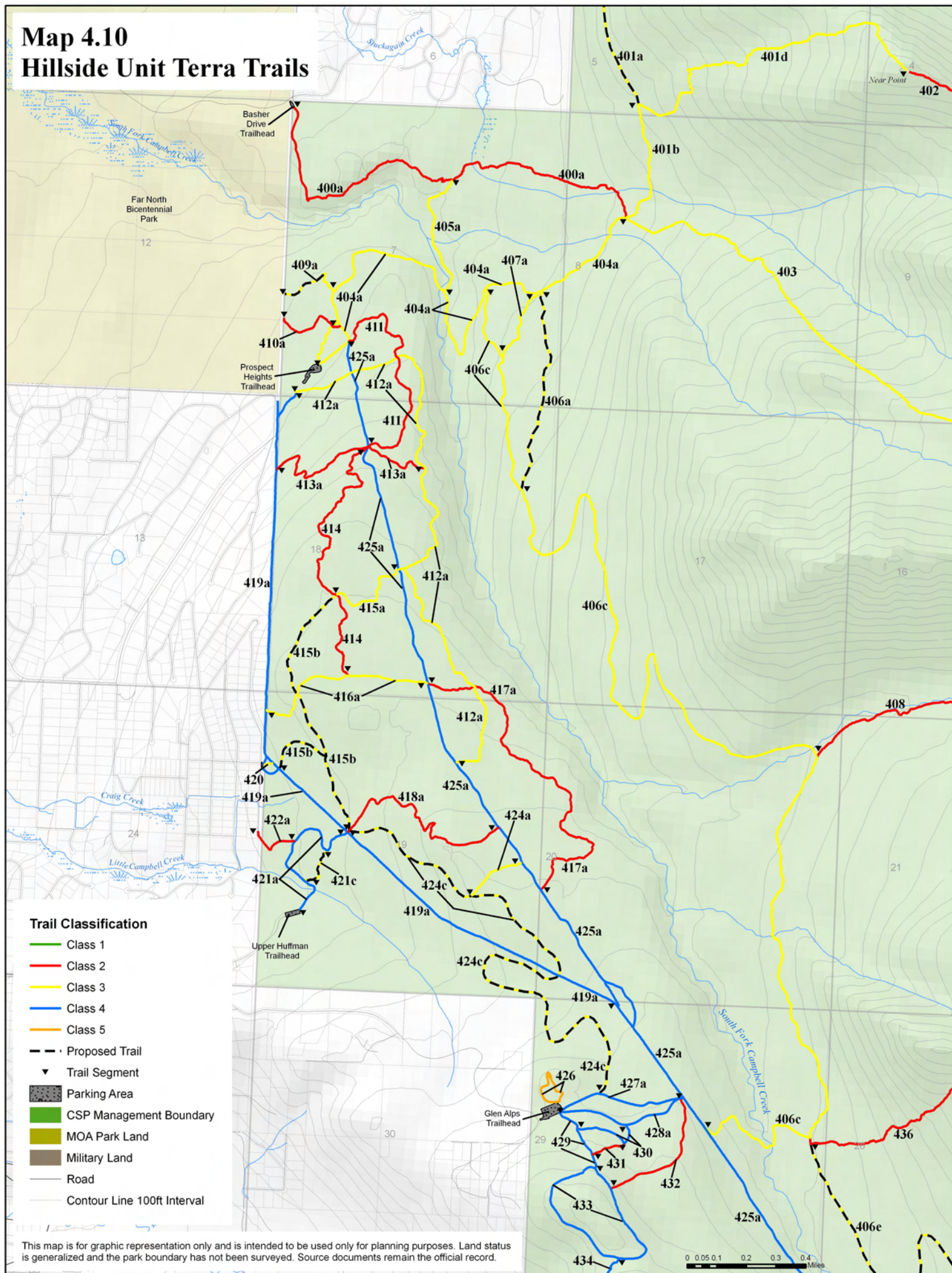
# Map 4.9 Hillside Unit Terra Trails



This map is for graphic representation only and is intended to be used only for planning purposes. Land status is generalized and the park boundary has not been surveyed. Source documents remain the official record.



# Map 4.10 Hillside Unit Terra Trails

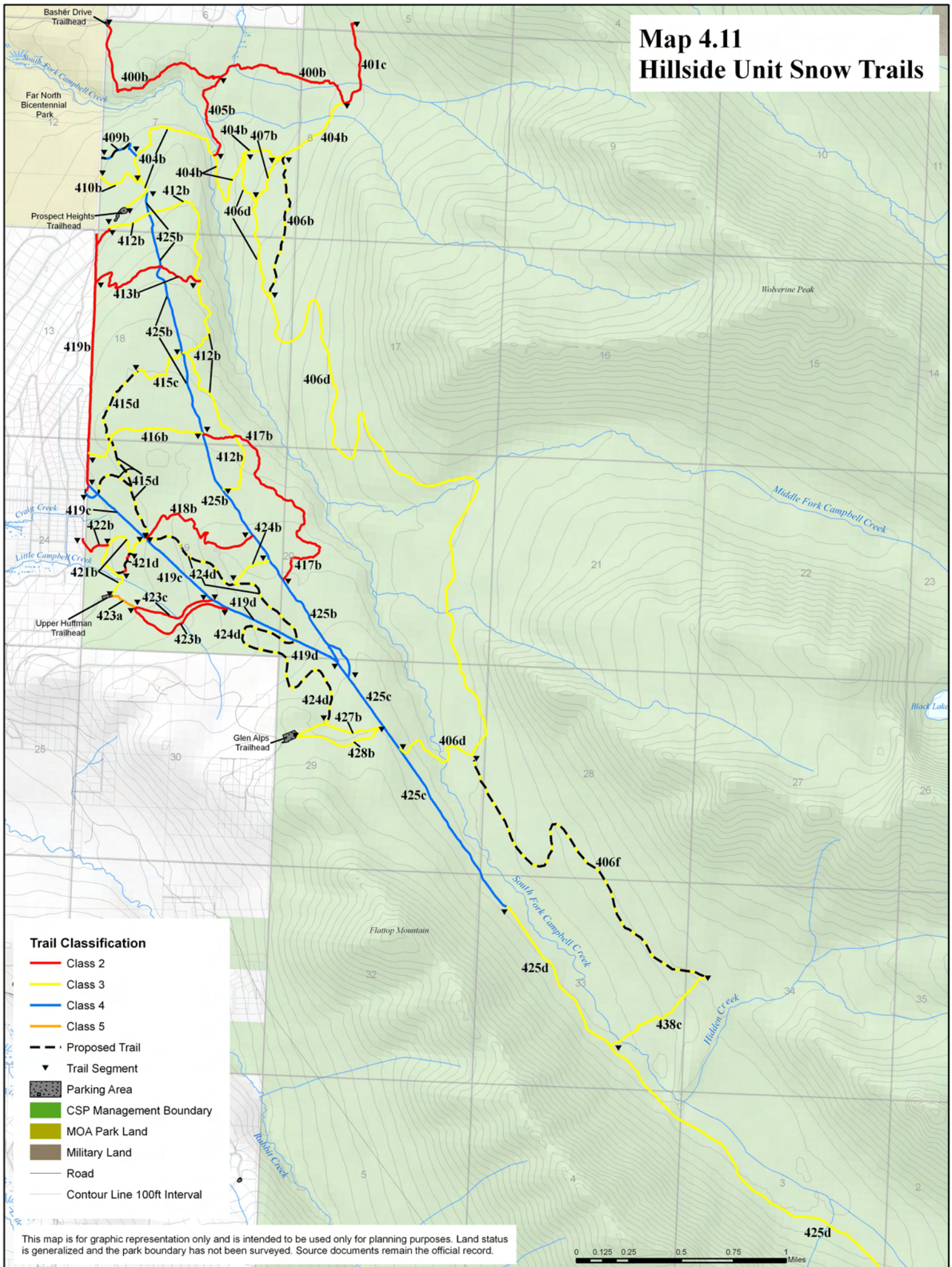


This map is for graphic representation only and is intended to be used only for planning purposes. Land status is generalized and the park boundary has not been surveyed. Source documents remain the official record.

0 0.05 0.1 0.2 0.3 0.4 Miles

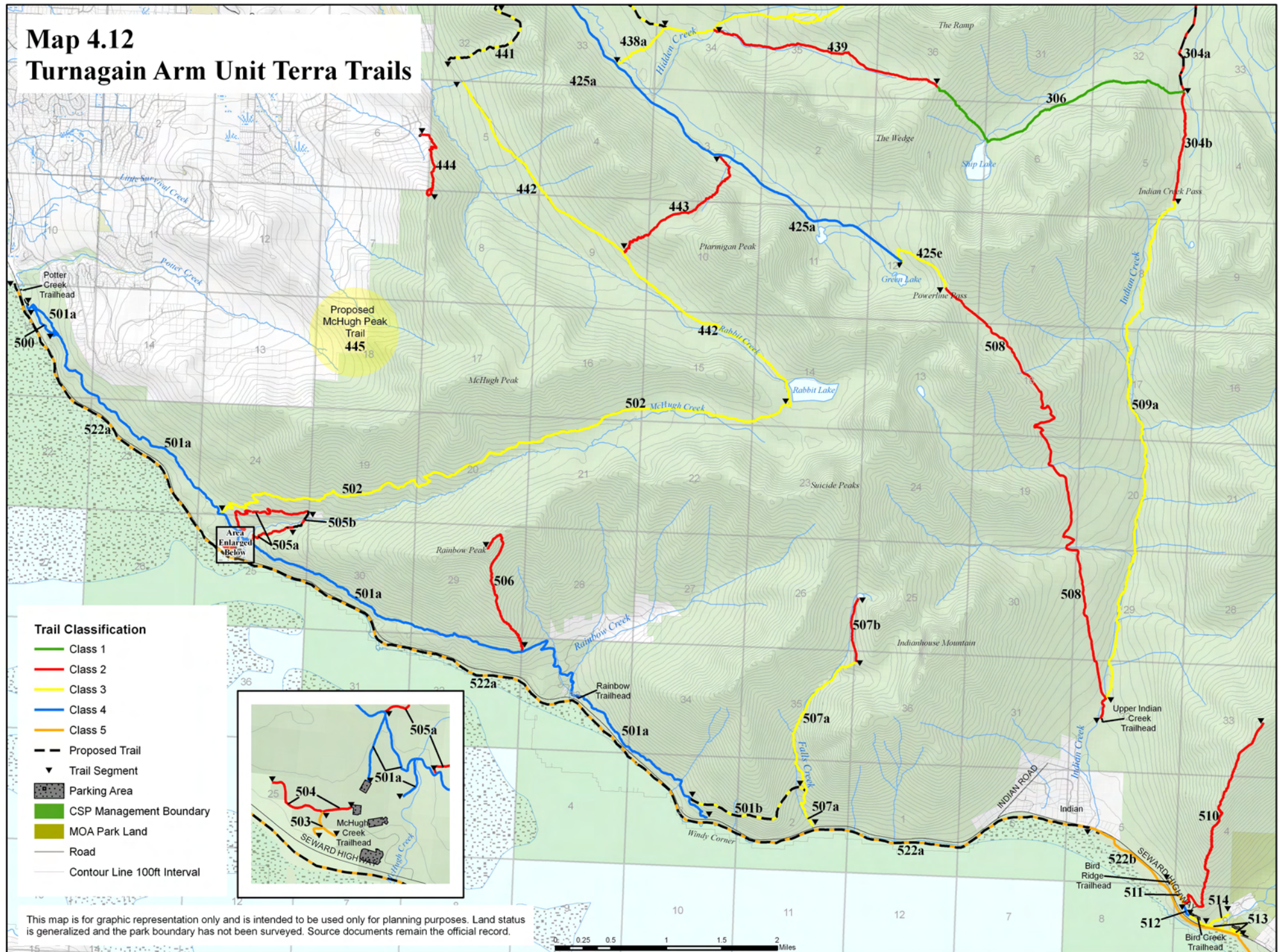


## Map 4.11 Hillside Unit Snow Trails



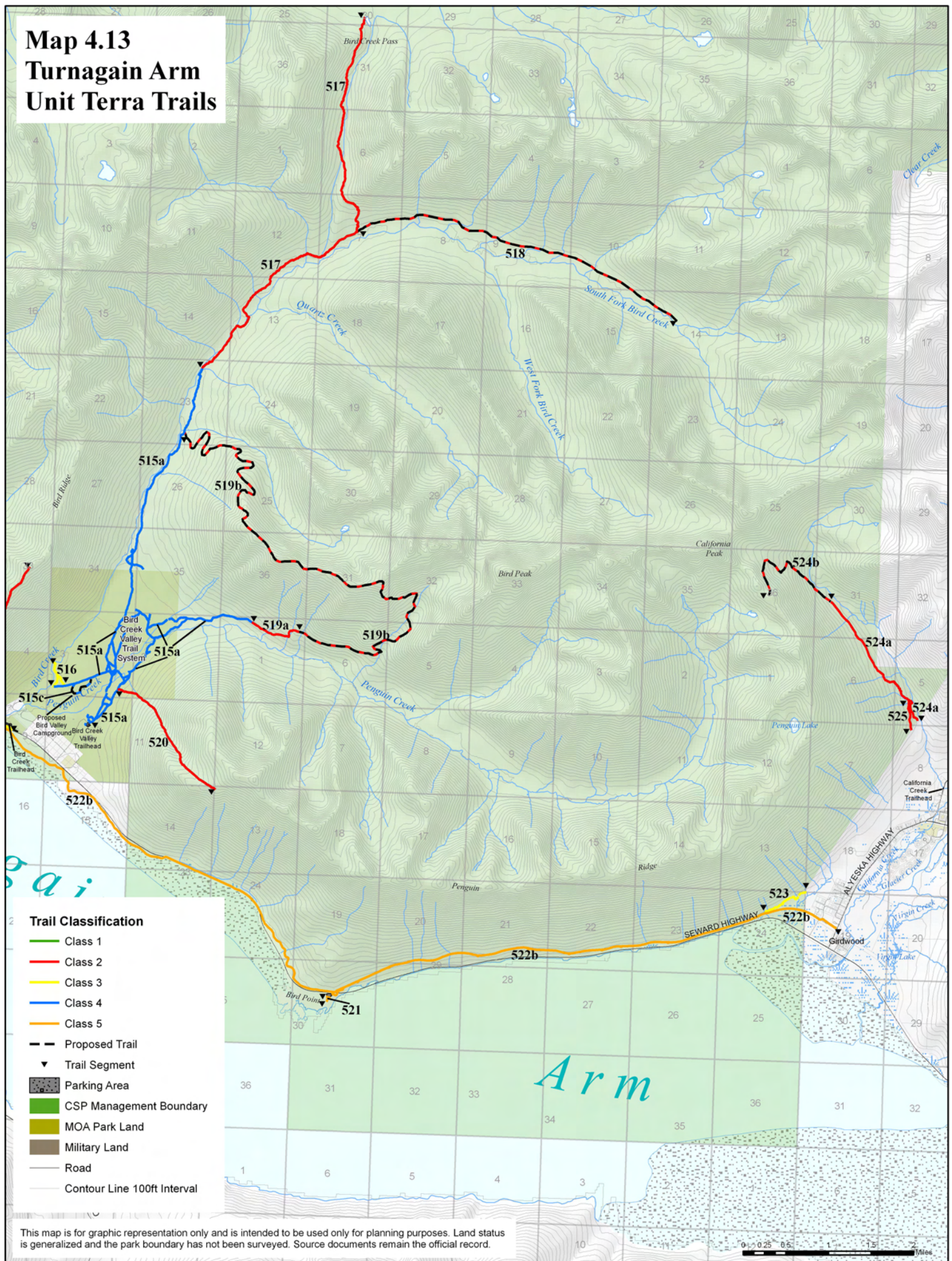


# Map 4.12 Turnagain Arm Unit Terra Trails





# Map 4.13 Turnagain Arm Unit Terra Trails





# Map 4.14 Turnagain Arm & Ship Creek Units Snow Trails

