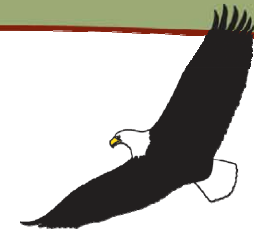


Guide to

Wolverine & Williwaw Trail System



in Chugach State Park

Trail Descriptions:

Wolverine Peak Trail:

Access: Prospect Heights Trailhead (via Wolverine Bowl Trail)

Allowable Uses: Hiking

Distance: 4.7 miles

Elevation Gain: 3500 feet

Difficulty: Moderate

Description: Mountain summit with views of the Alaska Range, Williwaw Lakes, Cook Inlet, and Anchorage. Berry picking in fall.

Williwaw Lakes Trail:

Access: Glen Alps or Prospect Heights Trailheads (via Middle Fork Loop Trail)

Allowable Uses: Hiking

Distance: (to first lake) 5.9 miles (from Glen Alps Trailhead); 7.4 miles (from Prospect Heights Trailhead)

Elevation Gain: 800 feet (from Glen Alps); 1500 feet (from Prospect Heights)

Difficulty: Moderate

Description: Long day hike or backpacking destination. Several alpine lakes in beautiful valley. Open alpine invites exploring. Lakes can also be accessed via the Ballpark Trail. Access to North Fork Campbell Creek Valley via Williwaw Pass (Contact Fort Richardson for access regulations). Good skiing in winter.

Near Point Trail:

Access: Prospect Heights Trailhead (via Wolverine Bowl Trail)

Allowable Uses: Hiking, Biking (to end of old road bed)

Distance: 3.7 miles one way

Elevation Gain: 2100 feet

Difficulty: Moderate

Description: Day hike to rounded alpine knob with views of the Alaska Range, Cook Inlet, and Anchorage. Berry picking in fall. Access to North Fork Campbell Creek Valley.



Safety and Considerations:

Be prepared for emergencies and file a trip plan with a friend. Use water purification techniques to avoid contracting Giardiasis (beaver fever). Part of the North Fork Campbell Creek Valley is on Fort Richardson, and a Recreation Access Permit is required. Call Fort Richardson at 384-0296 for more information.

Park Rules:

Camping is only allowed over ½ mile from the trailhead. Open fires are prohibited, except in a portable camp stove. Pets must be on a leash while in the parking lot, and under control on trails and in the backcountry. Visit <http://dnr.alaska.gov/parks/units/chugach> for a complete set of park rules.

Chugach State Park Headquarters
Mile 115, Seward Highway
(907) 345 - 5014
csp@alaska.gov



State of Alaska

Trail Assessment and Inventory of Chugach State Park December 2009

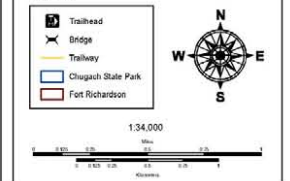
Projected Coordinate System:
NAD 83, State Plane Alaska, Zone 4
Contour Interval: 100 feet

Hillside Managed Trails



Location Map

Legend

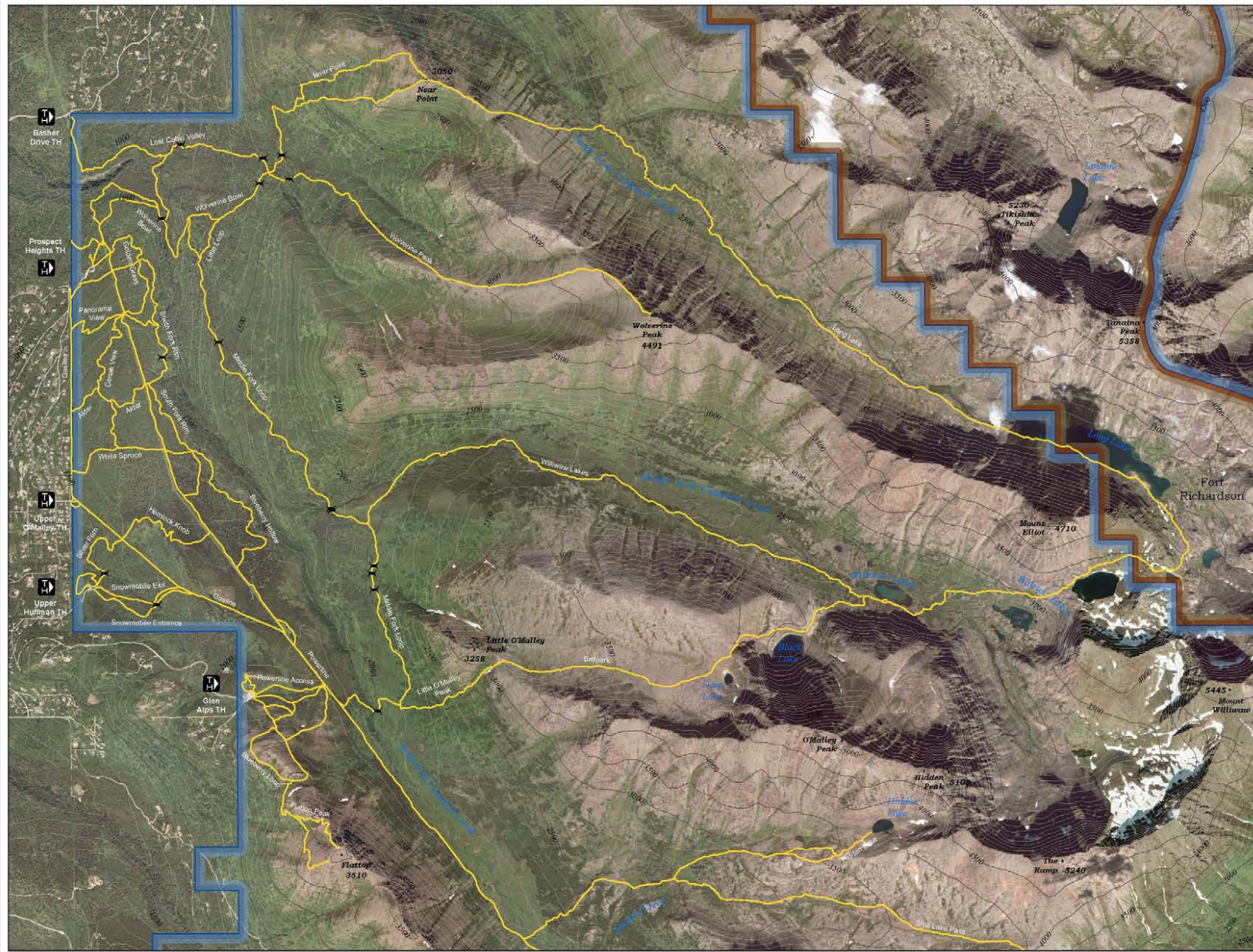


Produced by: Alaska Department of Natural Resources, Division of Support Services, Land Records Information Section, Date Printed: December 10, 2009, Cartographer: Martin Stahl.

This dataset includes differential GPS data collected during the Chugach State Park Trail Inventory Pilot Project that was conducted in conjunction with National Park Service (NPS) Rivers and Trails Conservation Assistance (RTCA) program, Alaska Department of Natural Resources (ADNR) Land Records Information Service (LRIS), Department of Parks and Outdoor Recreation (DPOAR), and Chugach State Park.

Chugach State Park: (907) 345-5014. Email: csp@alaska.gov
Alaska State Park: www.adnr.state.ak.us/parks. Emergency: 911.

The State of Alaska makes no expressed or implied warranties (including warranties of merchantability and fitness) with respect to the character, function, or capabilities of this product or its appropriateness for any user's purposes. In no event will the State of Alaska be liable for any incidental, indirect, special, consequential or other damages suffered by the user or any other person or entity whether from use of the product, any failure thereof or otherwise, and in no event will the State of Alaska's liability to you or anyone else exceed the fee paid for the product.



Contact Information

Fort Richardson
Access Permit
(907) 384 - 0296

Chugach State Park Headquarters
Mile 115, Seward Highway
(907) 345 - 5014
csp@alaska.gov