

Guide to



Anchorage Hillside Trail System

in Chugach State Park

Trail Descriptions:

Powerline: Prospect Heights and Glen Alps Trailheads (see Powerline Pass guide). Hiking, biking, skiing, snowmobiling (when conditions allow; access from Upper Huffman Trailhead).

Gasline: Prospect Heights, Glen Alps (via Powerline Trail), and Upper Huffman (via Silver Fern) Trailheads. Hiking, biking, skiing.

Middle Fork Loop: Access from Glen Alps (via Powerline Trail) or Prospect Heights (via Wolverine Bowl Trail) Trailheads. Provides access to Williwaw Lakes Trail. Hiking, skiing; no bikes allowed.

Blueberry Hollow: Access via Powerline, South Fork Rim, and White Spruce Trails. Hiking, skiing.

Hemlock Knob: Access via Powerline, Gasline, and Silver Fern Trails. Hiking, skiing.

Denali View: Access via Powerline, White Spruce, Panorama View, Alder, and Golden Grass Trails. Hiking, skiing.

White Spruce: Access via Powerline, Gasline, South Fork Rim, Blueberry Hollow, and Denali View Trails. Hiking, biking, skiing.

Alder: Access via Powerline, Gasline, South Fork Rim, and Denali View Trails. Skiing.

Silver Fern: Access via Upper Huffman Trailhead and Gasline Trail. Hiking, biking, skiing.

South Fork Rim: Access via Powerline, Gasline, White Spruce, Blueberry Hollow, Alder, Panorama View, and Golden Grass Trails. Hiking, biking, skiing.

Golden Grass: Access via Powerline, Wolverine Bowl, South Fork Rim, Panorama View, and Denali View Trails. Hiking, skiing.

Panorama View: Access via Powerline, Gasline, Denali View, and Golden Grass Trails. Hiking, skiing.



Safety and Considerations:

Many of the trails are multi-use, please be considerate of other users. Wildlife, especially Moose, frequent these trails. Please be cautious and do not approach wildlife. Know proper techniques to avoid and respond to dangerous wildlife encounters. Visit <http://www.adfg.state.ak.us/> for more information.

Special Features:

Numerous views of the Anchorage Bowl and surrounding mountains. Some trails can be used to gain access to longer trails within the park. Easily accessible multi-use system close to city. Both summer and winter recreation opportunities abound.

Park Rules:

Pets must be on a leash while in the trailhead parking lot, and under control on trails and in the backcountry. Please clean up after your pet. Open fires are prohibited, except in designated fire rings or portable camp stoves. Camping is allowed only in designated areas, or over 1/2 mile from the trailhead. Please respect bike restrictions.

Visit <http://dnr.alaska.gov/parks/units/chugach> for a complete set of park rules.

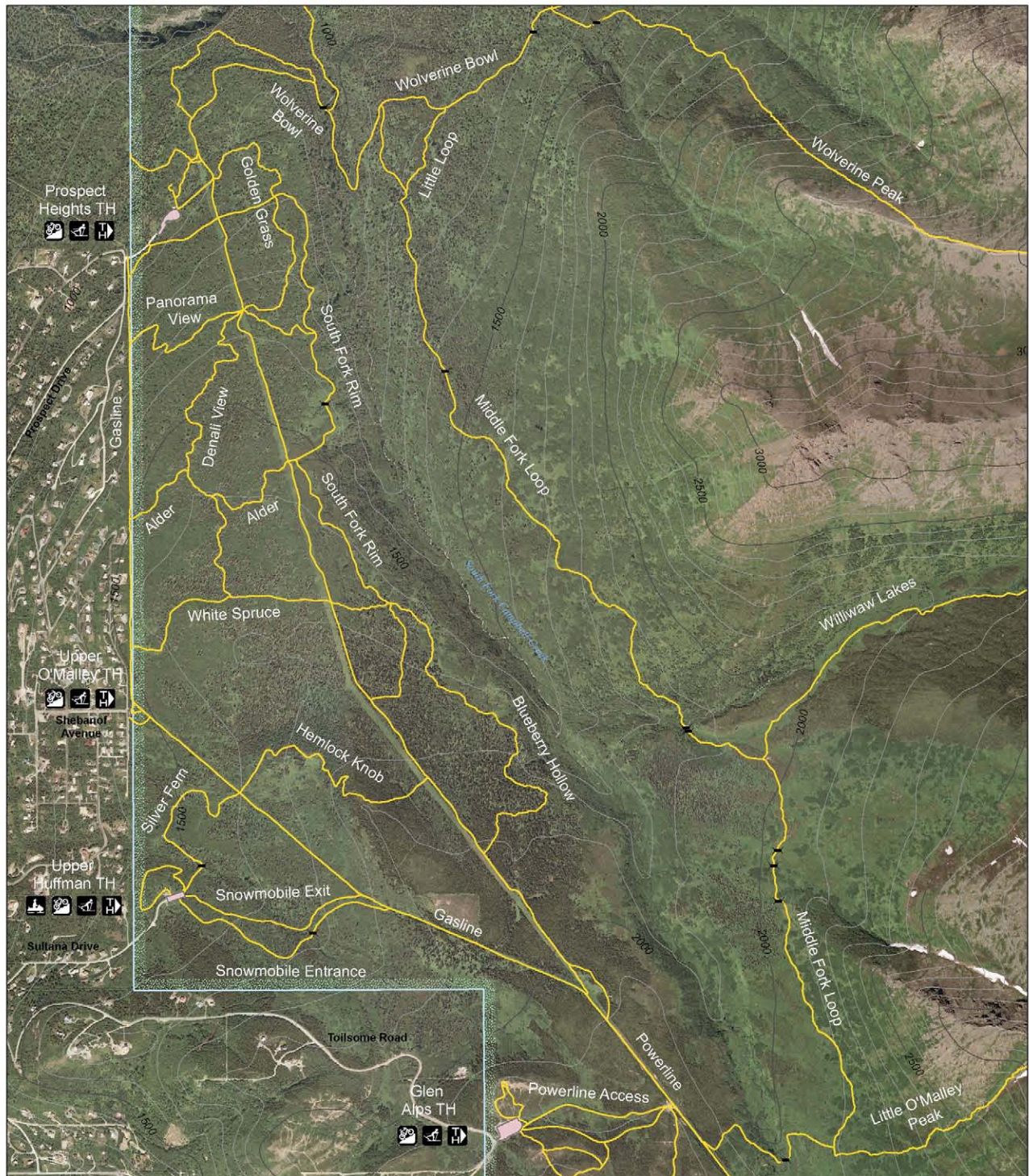
Chugach State Park Headquarters
Mile 115, Seward Highway
(907) 345 - 5014
csp@alaska.gov





Chugach State Park

Hillside Trail System



Produced by: Alaska Department of Natural Resources, Division of Support Services, Land Records Information Section. Date Printed: June 06, 2007. Cartographers: Martin Stahl, Mike Rucinski.

This dataset includes GPS data collected during the Chugach State Park Trail Inventory Pilot Project that was conducted in conjunction with National Park Service (NPS) Rivers and Trails Conservation Assistance (RTCA) program, Alaska Department of Natural Resources (ADNR) Land Record Information Service (LRIS), Department of Parks and Outdoor Recreation (DPOR), and Chugach State Park.

Chugach State Park: (907) 345-5014. Email: csp@alaska.gov. Alaska State Parks: www.dnr.state.ak.us/parks. Emergency: 911.

The State of Alaska makes no expressed or implied warranties (including warranties of merchantability and fitness) with respect to the character, function, or capabilities of this product or its appropriateness for any user's purposes. In no event will the State of Alaska be liable for any incidental, indirect, special, consequential or other damages suffered by the user or any other person or entity whether from use of the product, any failure thereof or otherwise, and in no event will the State of Alaska's liability to you or anyone else exceed the fee paid for the product.

Legend

- Trailhead
- Snowmobiling
- Mountain Biking
- Cross-Country Skiing
- Bridge
- Trailway
- Parking Areas
- Chugach State Park



Projected Coordinate System:
NAD 83, State Plane Alaska, Zone 4
Contour Interval: 100 feet

