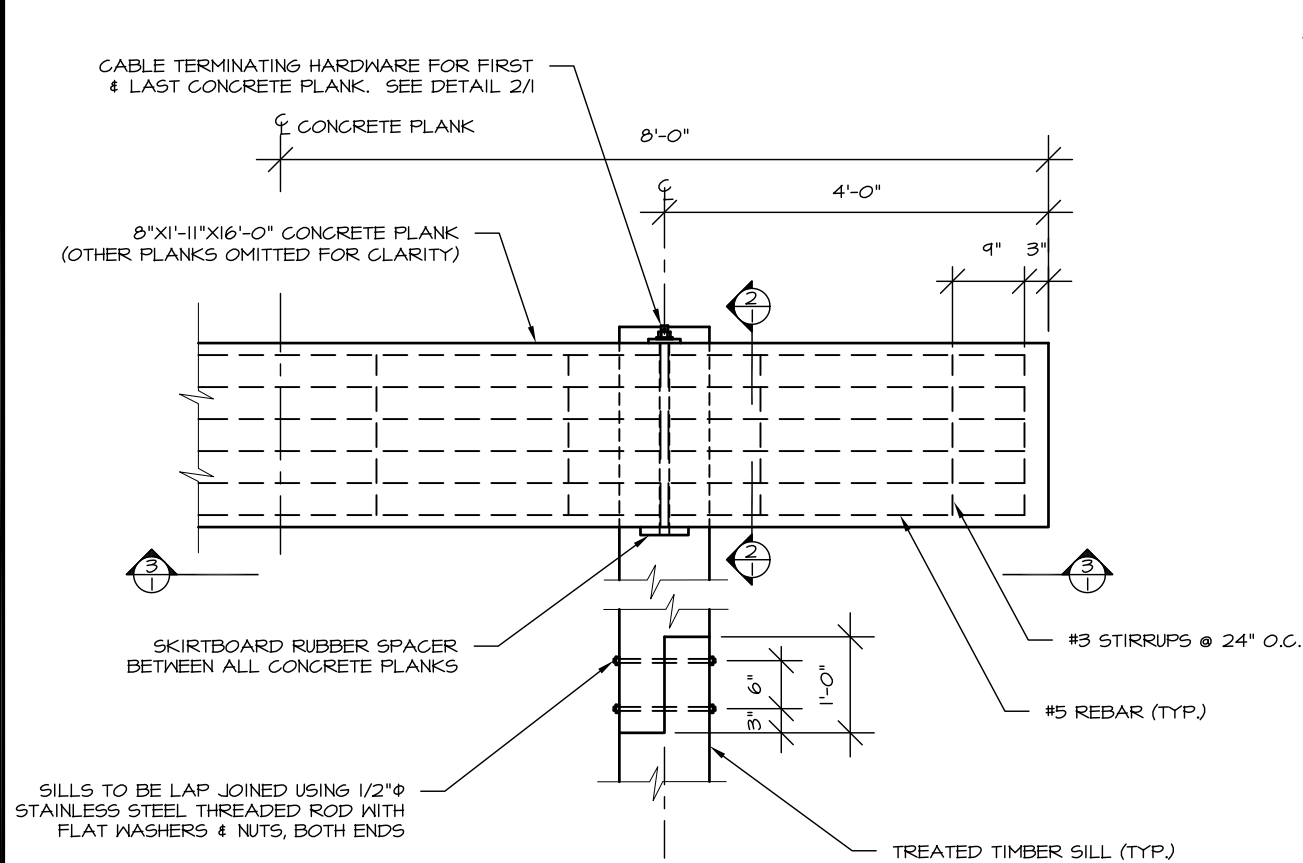




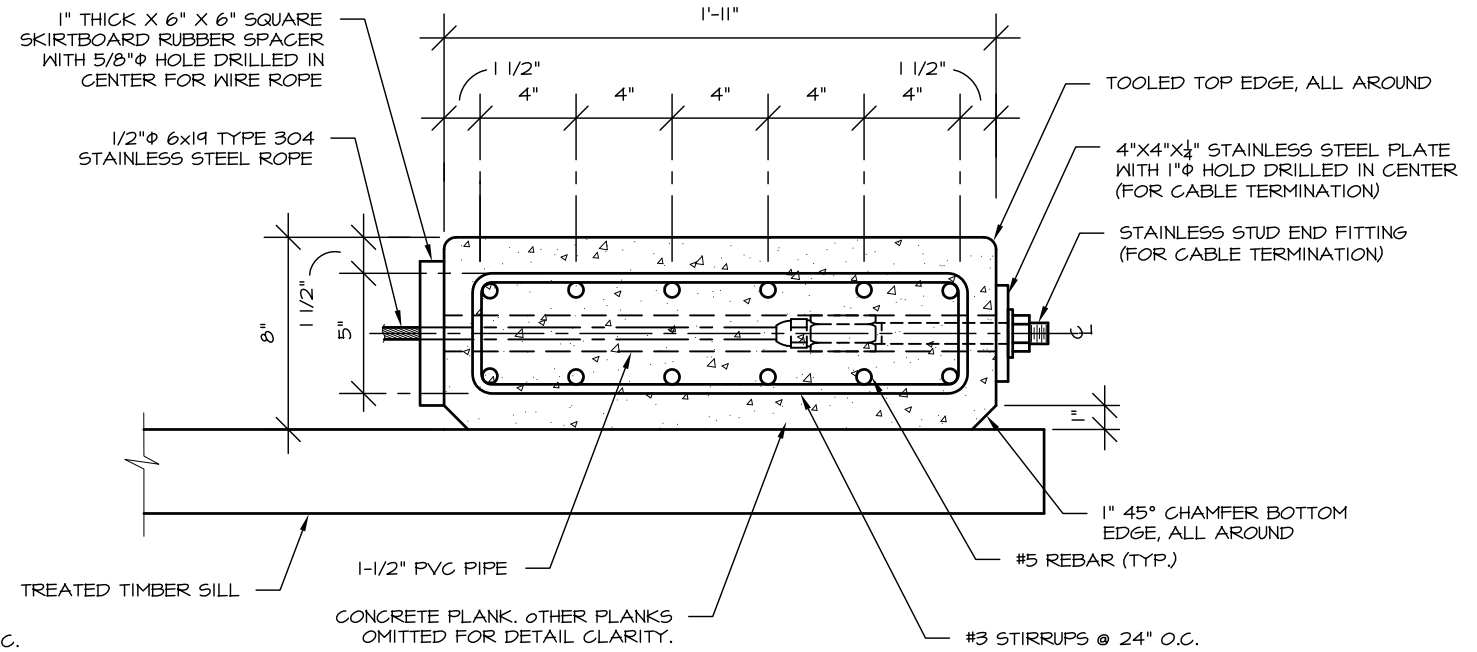
PREPARED:
DRAWN: TD
REVIEWED: DH
DATE: SEPT. 02

SHEET 1

W-I
OF 1 SHEETS



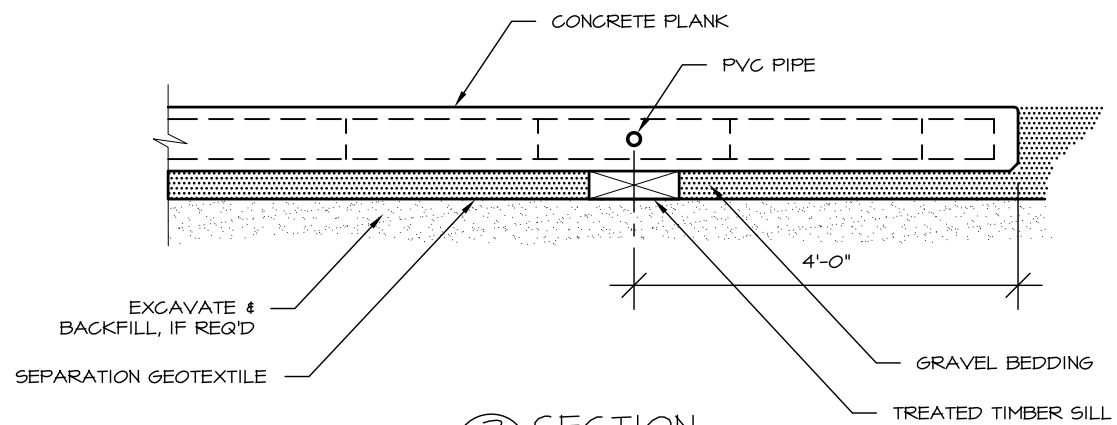
PLAN



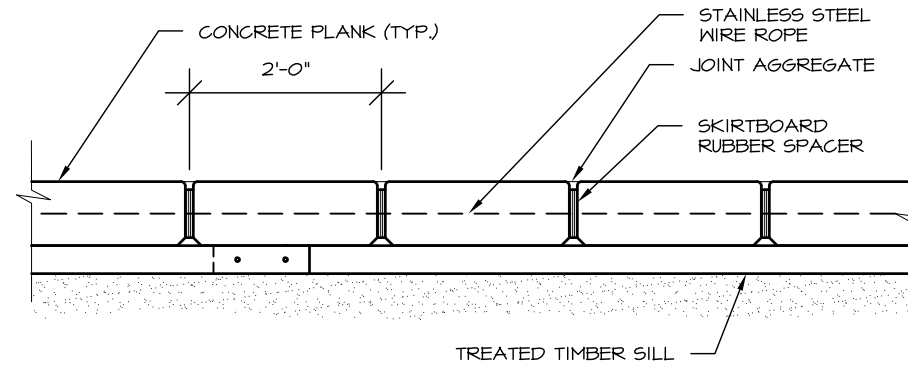
SECTION 2

NOTES:

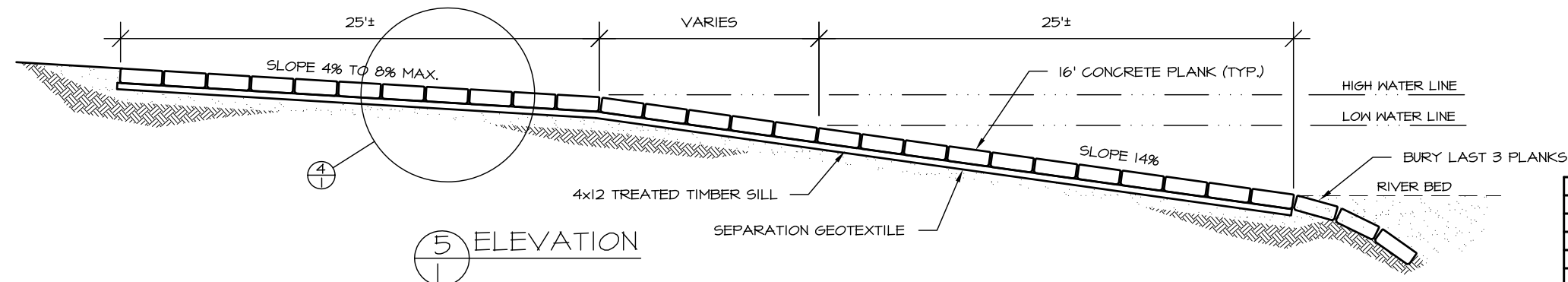
1. REBAR SHALL BE WIRE TIED TO STIRRUPS.
2. THERE SHALL BE NO LESS THAN 1-1/2 INCH OF CONCRETE COVER OVER REINFORCING STEEL.
3. TOP SIDE OF CONCRETE PLANKS SHALL BE HEAVY BROOM FINISHED.
4. 4X12 TREATED TIMBER SILLS SHALL BE PROCURED IN 12' TO 18' LENGTHS TO MINIMIZE LAP JOINTS AND INCORPORATE 12' MIN. SILL LENGTHS, IF BOAT RAMP DESIGN PERMITS.
5. GRADE BREAK IN RAMP INSTALLATION SHALL BE LOCATED AT HIGH WATER LEVEL DURING USE PERIOD.
6. SEPARATION GEOTEXTILE SHALL BE PLACED BEFORE INSTALLING TREATED TIMBER SILLS.
7. ALL SPACES BETWEEN CONCRETE PLANKS SHALL BE FILLED WITH JOINT AGGREGATE.



SECTION 3



DETAIL 4



ELEVATION 5

FOR INFORMATIONAL USE ONLY
Alaska State Parks

NO.	REVISION	DATE	APPROVED
13	REMOVED SCALES	12/10	MPS
12	ADDED BURIED PLANKS AT BOTTOM OF RAMP	12/10	MPS
11	UPDATED STATE PARK LOGO	12/10	MPS
10	CHANGED TITLE BLOCK	12/07	MPS
9	ADJUSTED LOCATION OF REBAR IN PLANK	12/04	MPS
8	REPLACED STAMP	3/04	MPS
7	REPLACED STAMP	3/02	DH