



This cabin was constructed by volunteers and State Park staff for your use and enjoyment. Please help keep it neat and attractive for those who will use it after your visit.

**ACCESS ALERT:** The 5.8 mile Colorado Creek Trail is extremely wet and not advisable for summer access. This is a winter route to the cabin. Summer access to the cabin is via the Compeau Trail. This trail is temporarily closed each spring during break-up from April 20<sup>th</sup> through May 22<sup>nd</sup>.

### Important Information

- Let someone know where you are going and when you expect to return.
- Cabins may only be used by those who have paid the rental fee in advance, and only on the days specified on the receipt. You must have your receipt-permit with you during your stay.
- Cabins may not be used for commercial activities.
- Refer to the attached information: "Reservation Cancellation and Use Policies."
- The Division of Parks & Outdoor Recreation may close cabins due to weather, maintenance problems, break-up, ice conditions, or other reasons.
- For cabin and trail condition updates call the Public Information Center (907) 451-2705 or visit our website: <http://www.alaskastateparks.org>.

### BE PREPARED!

Refer to the cabin location map on the back of this page.

### What to take to the Cabin:

- The cabin measures 12' X 16'. Four single plywood platform bunks can sleep four adults.
- The cabin is supplied with a wood stove, table, seats, propane lantern, broom, ax, saw, and shovel. All other camping equipment and supplies must be provided by the user, including:
  - Sleeping bag
  - Sleeping pad or air mattress
  - Food
  - Disposable propane cylinder for the Coleman lantern
  - Cookware, dishes, utensils
  - Cooking stove and fuel
  - Matches, lighters, paper fire starter
  - First aid items
  - Plastic trash bags
  - Jug of water
  - Saw or ax, just in case
  - Firewood for at least the first night in winter
  - Flashlight

### A few necessary do's and don'ts:

- Do not leave food or garbage in the cabin at the end of your visit. It might seem helpful to share food with future cabin users, but food (even in airtight containers) attracts bears and small animals. It doesn't take them long to seriously damage a cabin.  
Please pack out everything you packed in.
- Do not leave cookware, sleeping pads, or other items in the cabin at the end of your visit.
- The cabins have a propane (disposable cylinder) lantern. Spare lantern mantles should be hanging near the kitchen counter.
- Please leave some cut dry wood for the next visitor. A bow saw and ax are provided for your use. Only down or burnt trees may be cut.
- Keep the fire in the stove under control. Do not leave the dampers open when you are not in the cabin.
- Please dispose of all waste water in the toilet. Water dumped outside the cabin is unsightly, unsanitary, and attracts unwanted wildlife. Do not place garbage in the toilet, please pack it out.
- Target practice is not allowed in the Recreation Area except at the Mile 36.5 shooting range. The discharge of weapons is allowed only for the lawful taking of game.
- Stay alert and cautious of any trapping activity in the area. Traps and bait may be located near trails. Children and pets should be monitored closely.
- Feel free to write your comments in the cabin's logbook. Please report any missing or damaged furnishings or other problems to the Public Information Center in Fairbanks immediately, (907) 451-2705.

**Check out time is 12:00 noon.**

Alaska Department of Natural Resources  
Division of Parks and Outdoor Recreation  
3700 Airport Way  
Fairbanks, AK 99709  
(907) 451-2695



Alaska Department of  
**NATURAL  
RESOURCES**

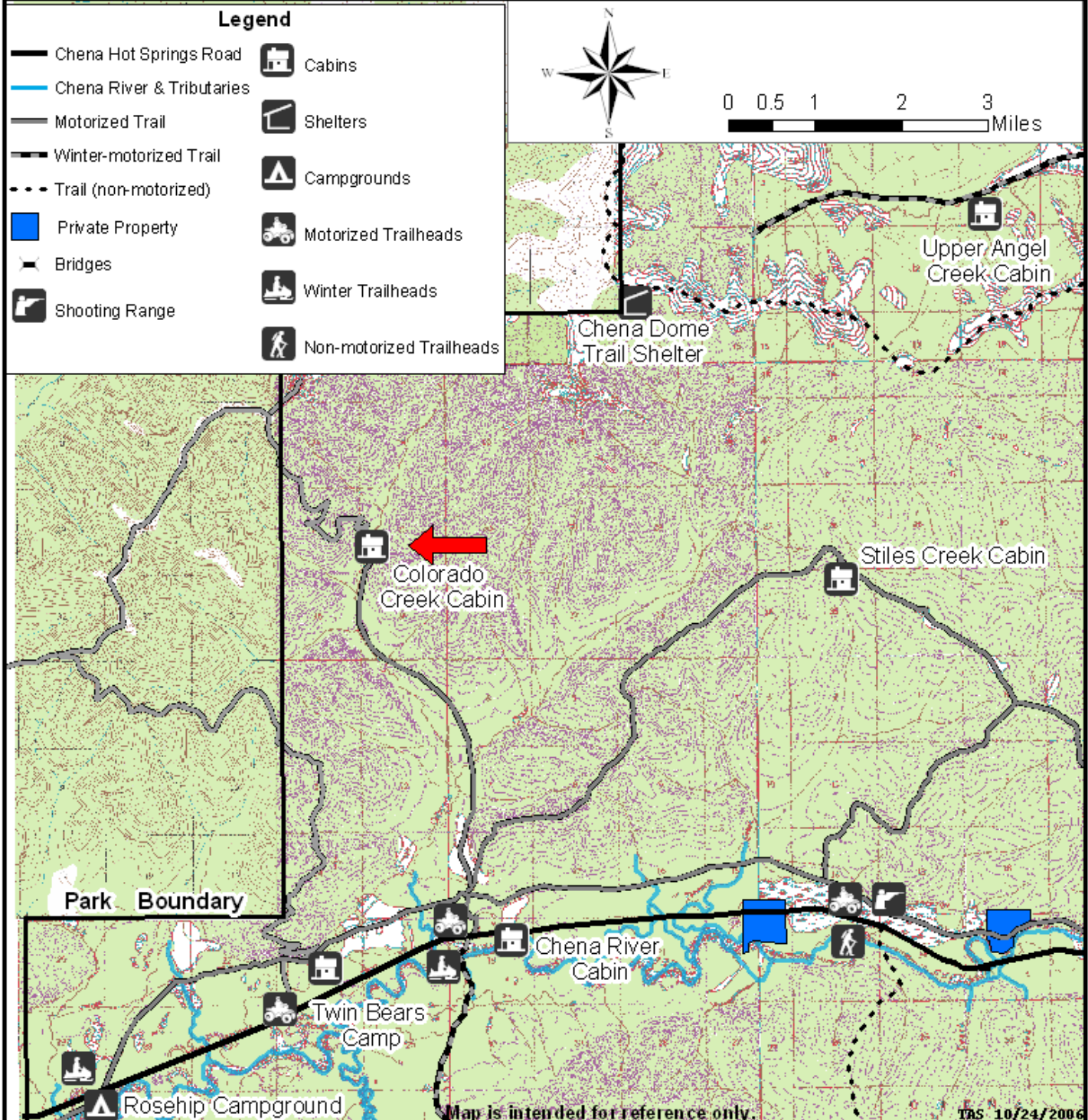


# Colorado Creek Public Use Cabin

The Colorado Creek Cabin can be reached by two different trails: the Colorado Creek Trail, or the Compeau Trail.

**Colorado Creek Trail:** This multi-use trail is open to off-road vehicles, although not recommended during summer months due to wet and boggy trail conditions and stream crossings. A loading ramp is available at the trailhead. Follow the BLUE trail markers 5.8 miles to the cabin. You will cross Colorado Creek's main channel at mile 2.5. Watch for the turnoff to the cabin at mile 5.4. The cabin is another 0.4 miles from the turnoff.

**Compeau Trail:** This multi-use trail provides good summer access to the Colorado Creek Public Use Cabin. The Compeau trailhead is located at mile 29.9 Chena Hot Springs Road, on the North (Left) side of the road. Follow the blue/black trail markers 18 miles to the cabin. The Compeau Trail follows The Little Chena Dozer Line from mile 10 to mile 15; use caution as this section has steep grades. The final 2.5 miles to the cabin follows an easy contour route.



Map is intended for reference only.

TAS 10/24/2006