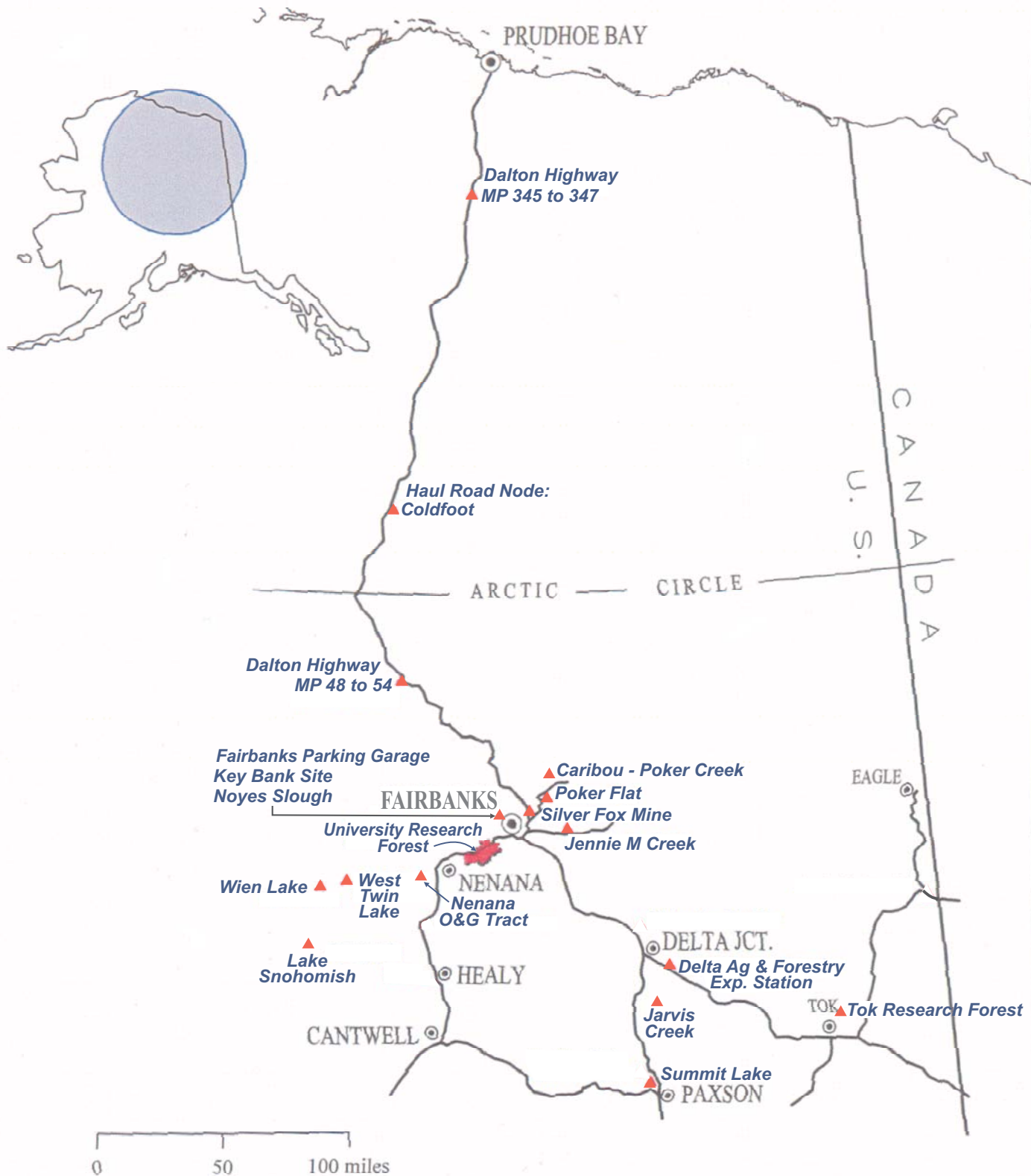
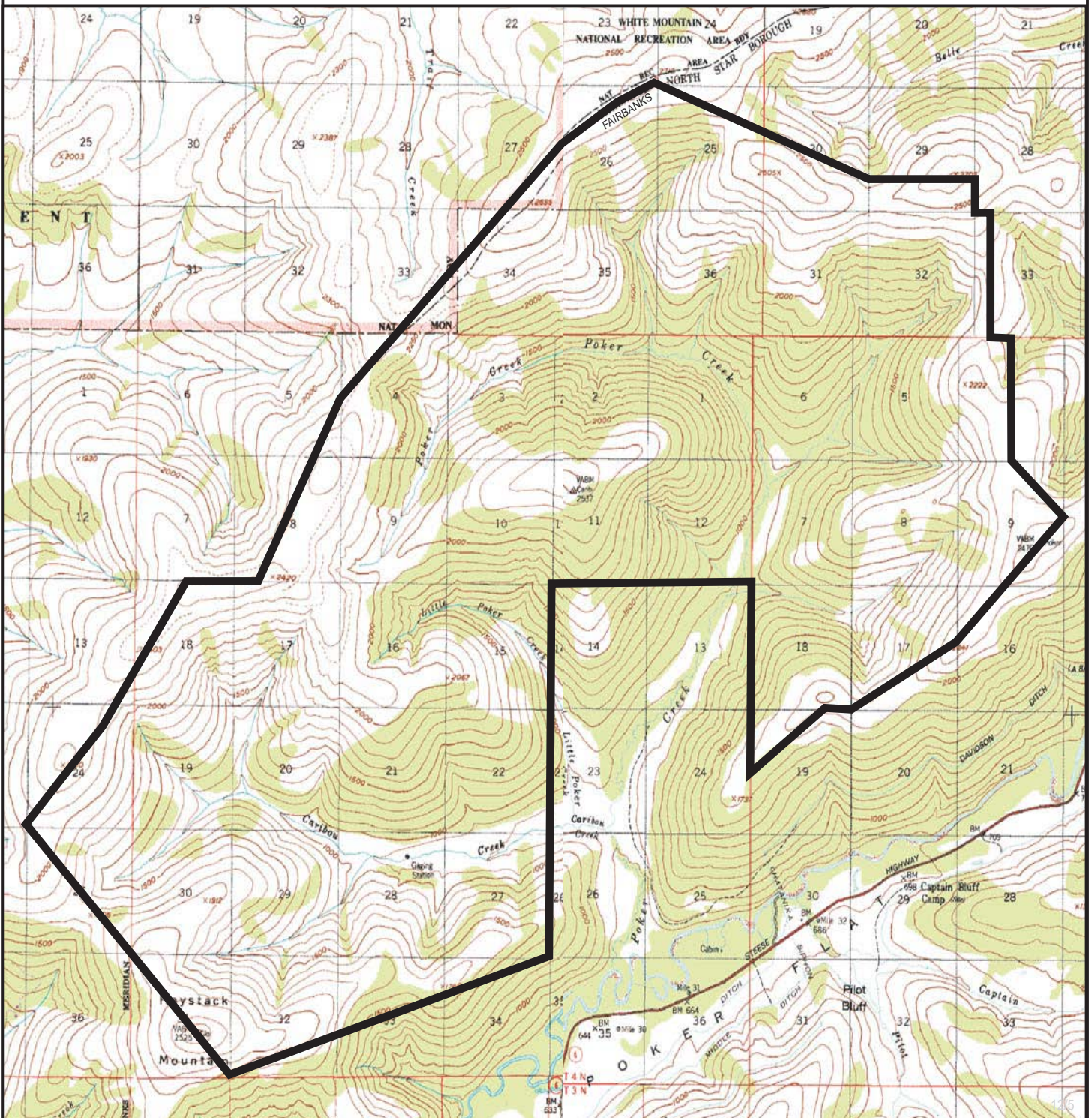


# NORTHERN - INTERIOR REGION





# Caribou-Poker Creeks Watershed



Prepared by: DNR  
 Source USGS: Livengood A-1, A-2  
 Date: 12/2004

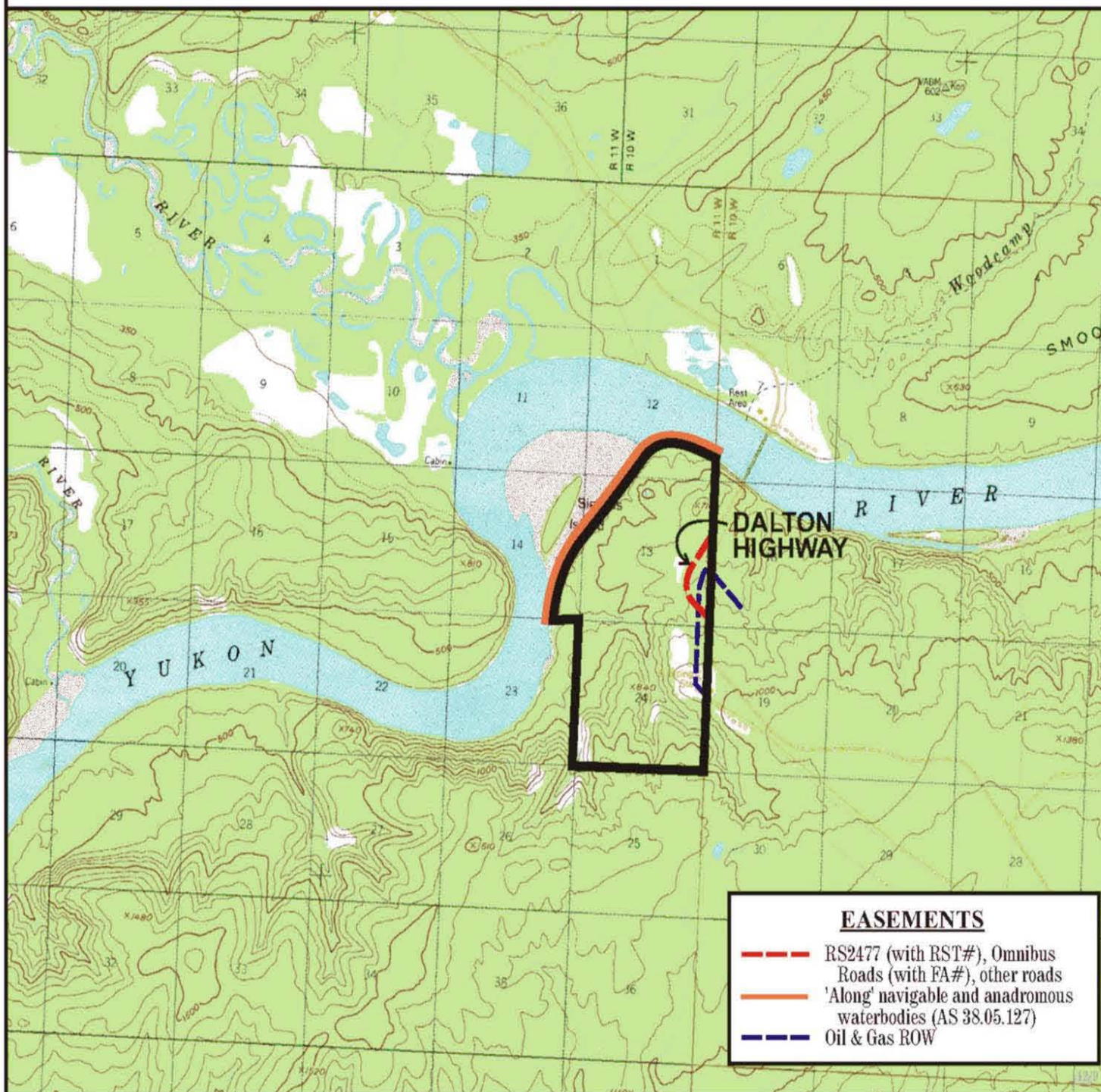
one mile

Meridian	Township	Range
F	04N	1E-2E



# Dalton Highway MP 48 to 54

DH.YR.1001



Prepared by: DNR  
Source USGS Livengood D-6  
Date: 12/2004

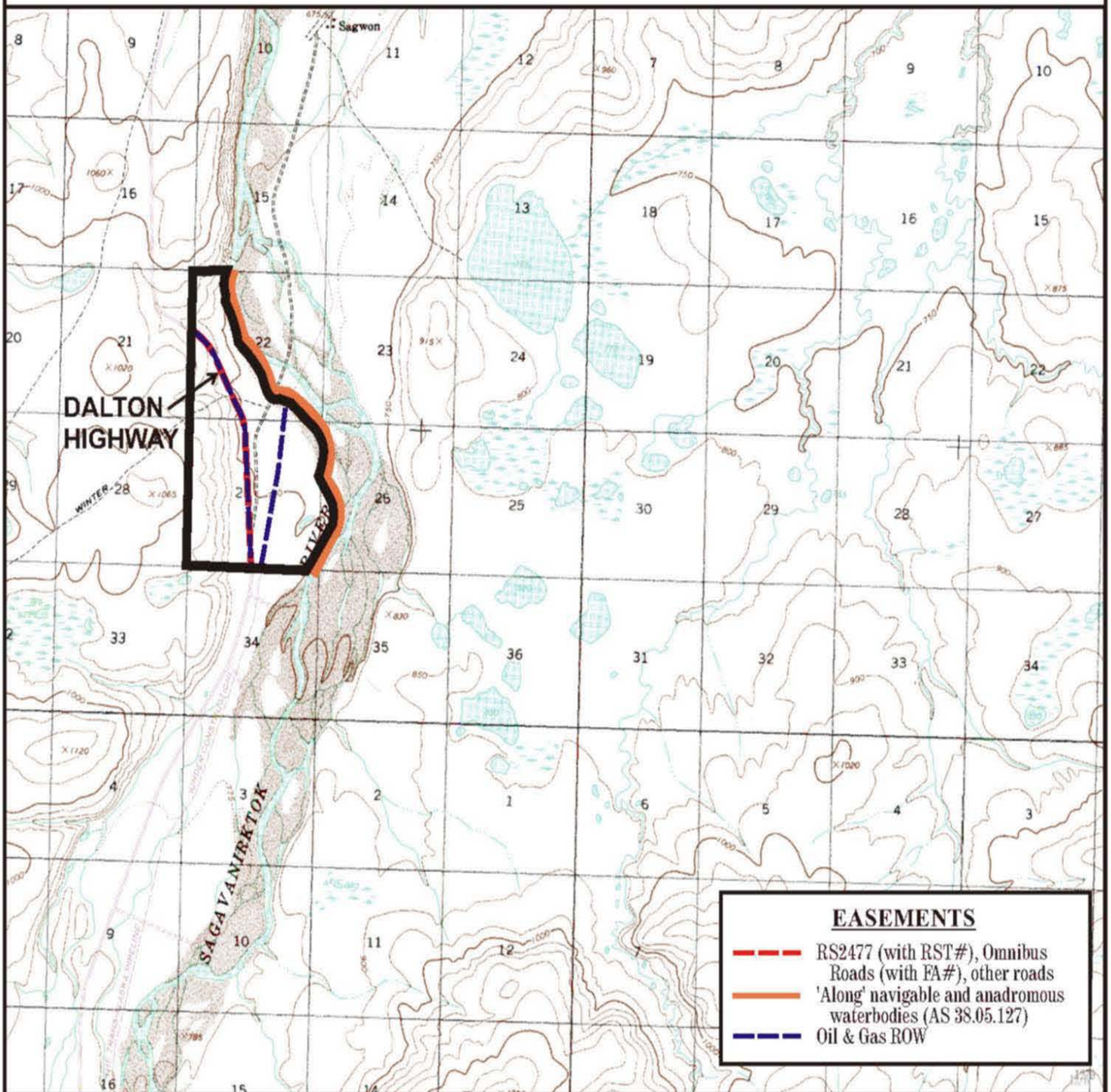
one mile

Meridian	Township	Range
FM	12N	10-11W



# Dalton Highway MP 345 to 347

DH.SR.1001



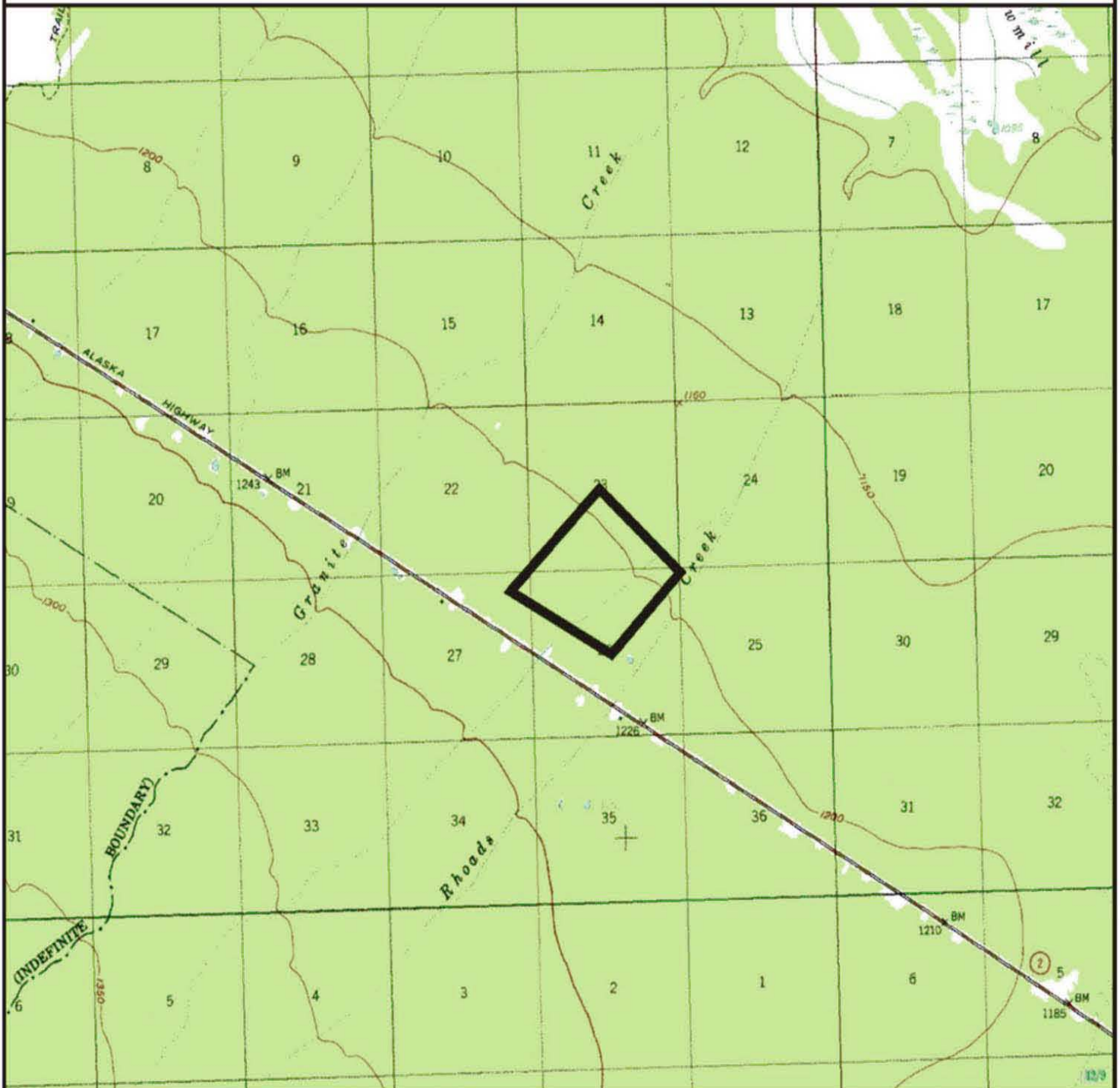
Prepared by: DNR  
Source USGS Sagavanirktok B-3  
Date: 12/2004

Meridian Township Range  
UM 1S 14E



# Delta Ag & Forestry Exp. Station

MA.XS.1001



Prepared by: DNR  
Source USGS Mt. Hayes D-3  
Date: 12/2004

one mile

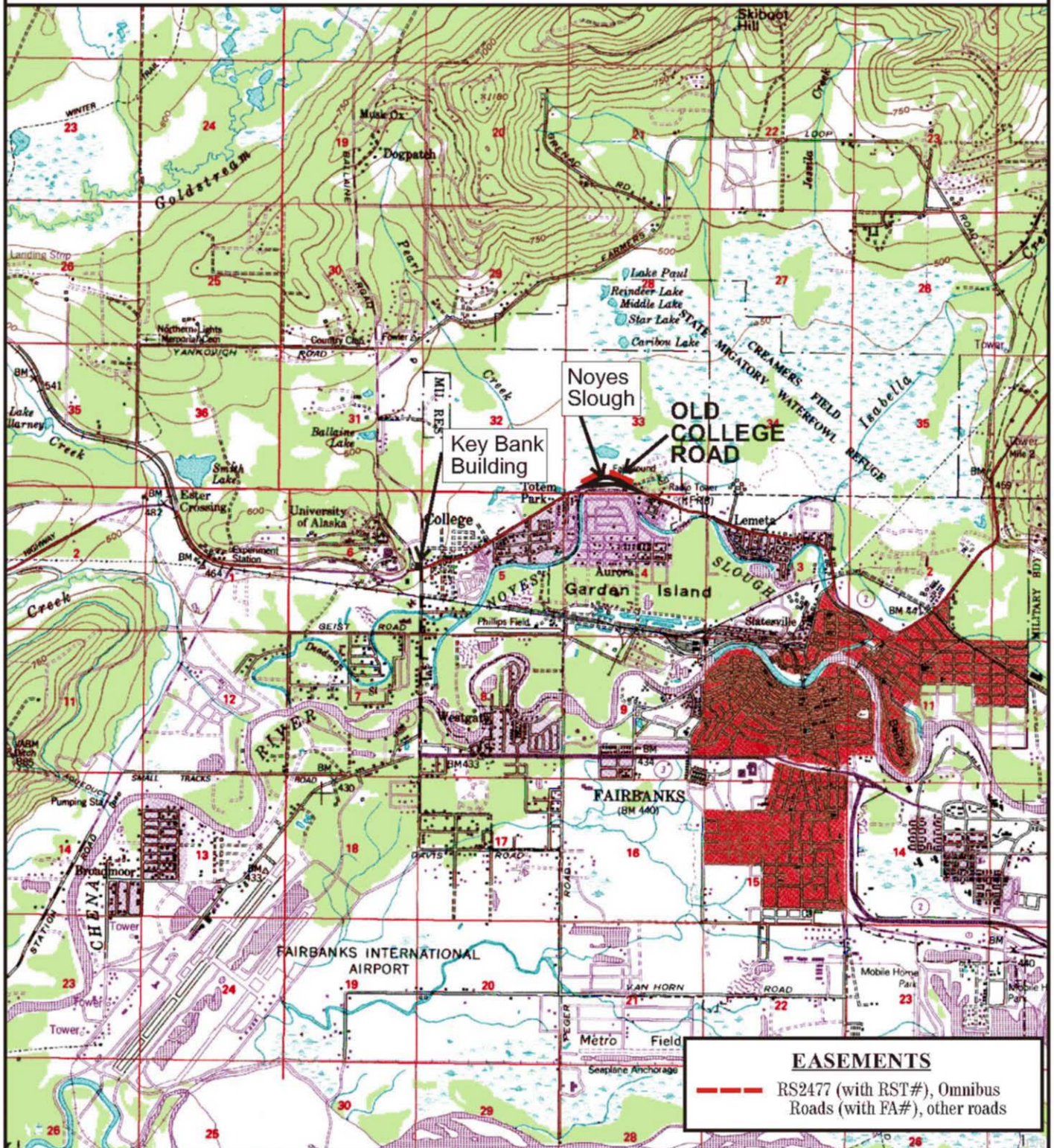
Meridian	Township	Range
FM	11S	12E



# Fairbanks Area Parcels

N2.FA.1003

N2.FA.1004



Prepared by: DNR  
 Source USGS Fairbanks D2  
 Date: 12/2004

— one mile —

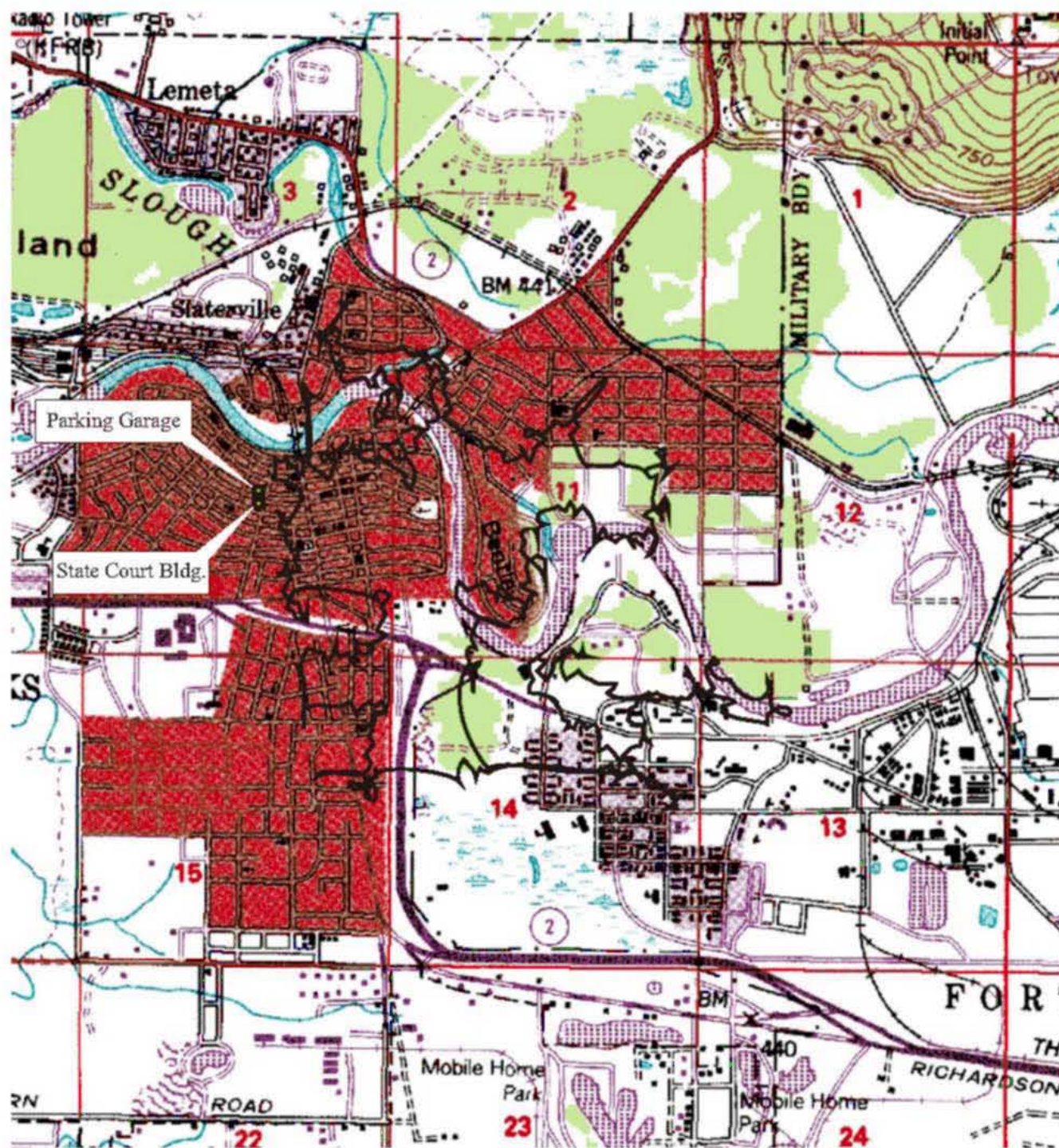
Meridian	Township	Range
FM	1N-1S	1W



# Fairbanks Downtown Parcels

N2.FA.1001 Parking Garage

N2.FA.1002 Old State Court Building



Prepared by: DNR  
Source USGS Fairbanks D-2  
Date: 12/2004

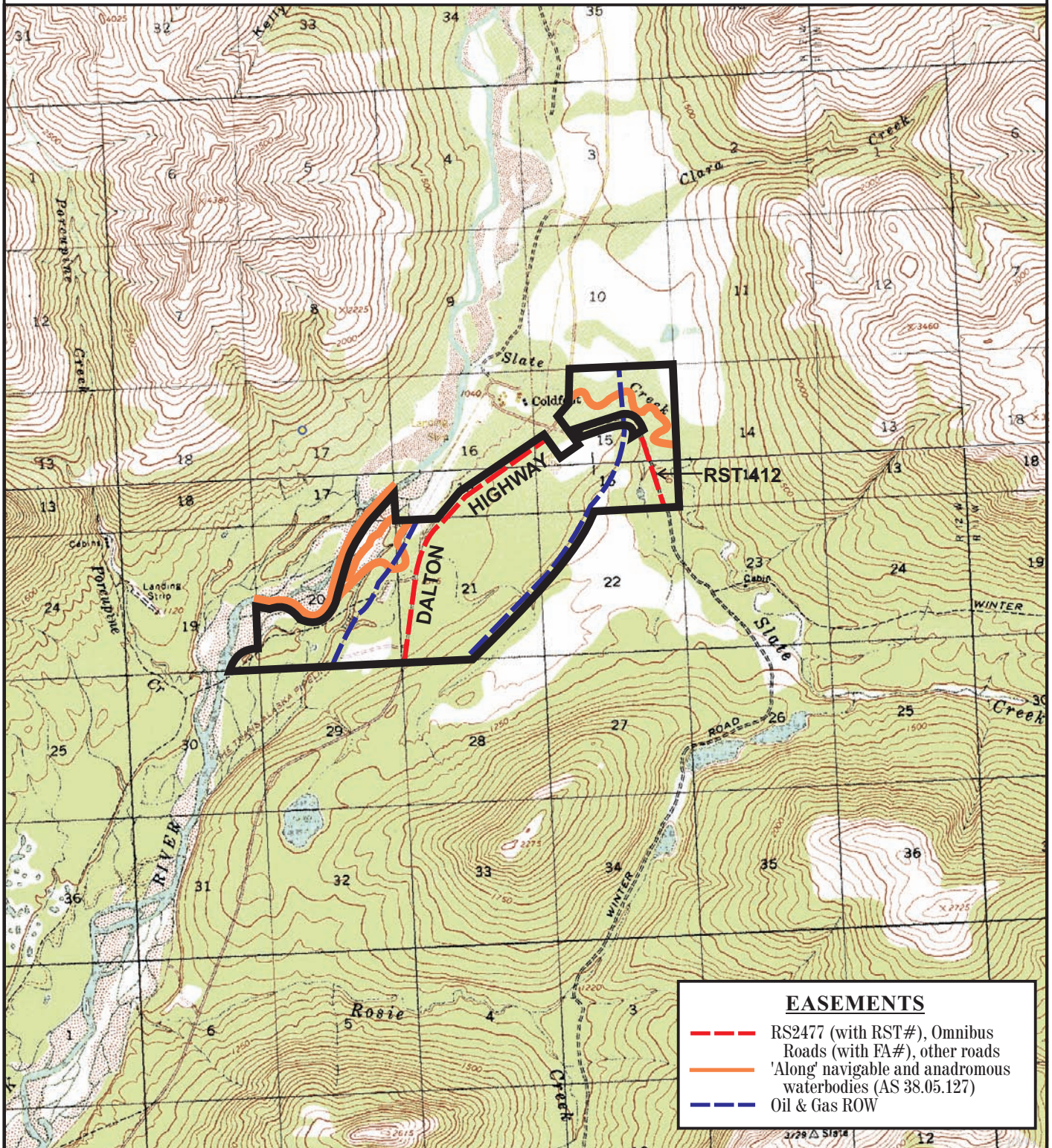
1/2 mile

Meridian	Township	Range
F	1S	1W



# Haul Road Nodes - Coldfoot

MA.HR.1001



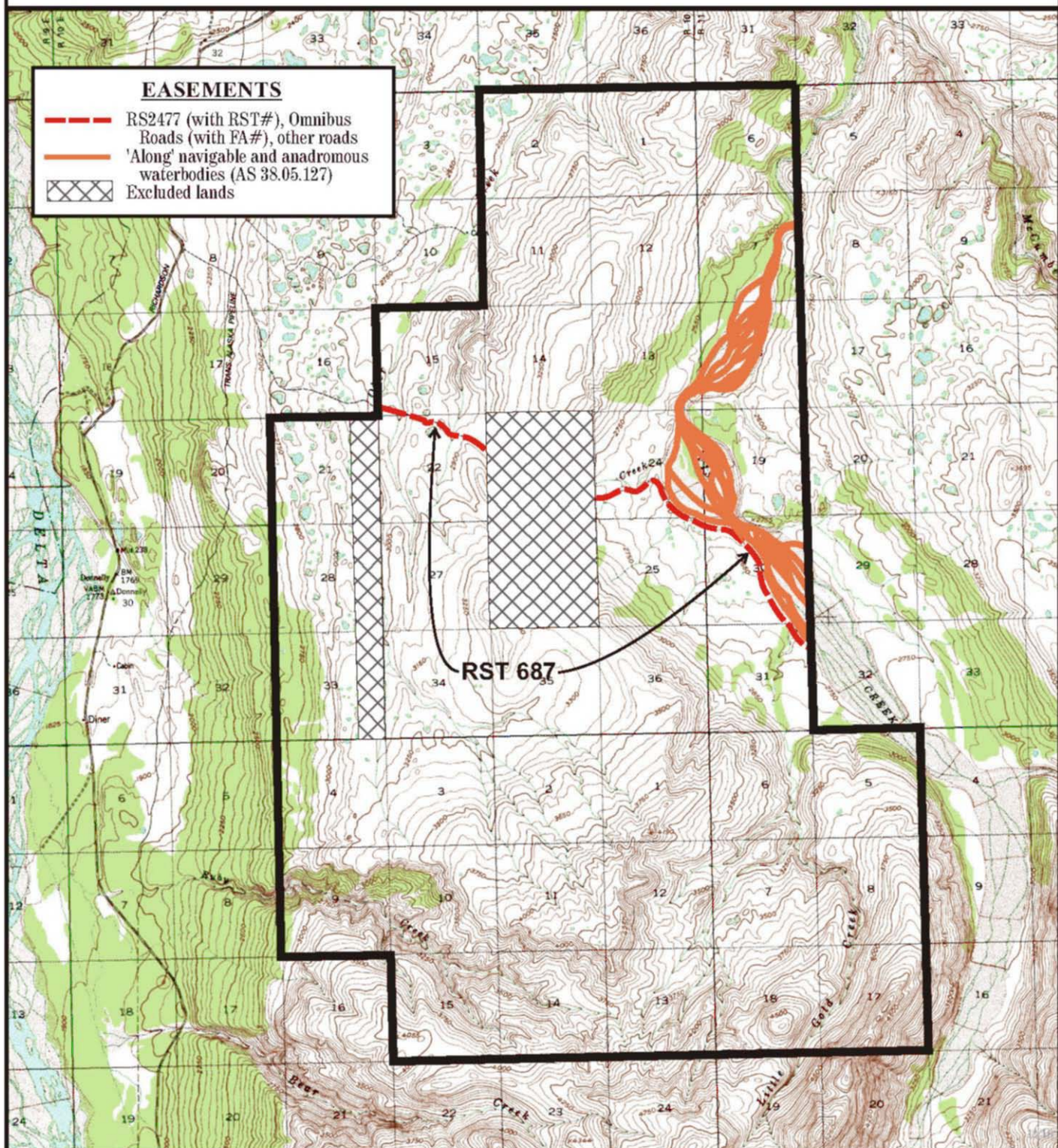
Prepared by: DNR  
Source USGS Wiseman A-1, B-1  
Date: 12/2004

one mile

Meridian	Township	Range
FM	28N	12W



# Jarvis Creek Coal Field



Prepared by: DNR  
 Source USGS, Mt. Hayes C-4  
 Date: 12/2004

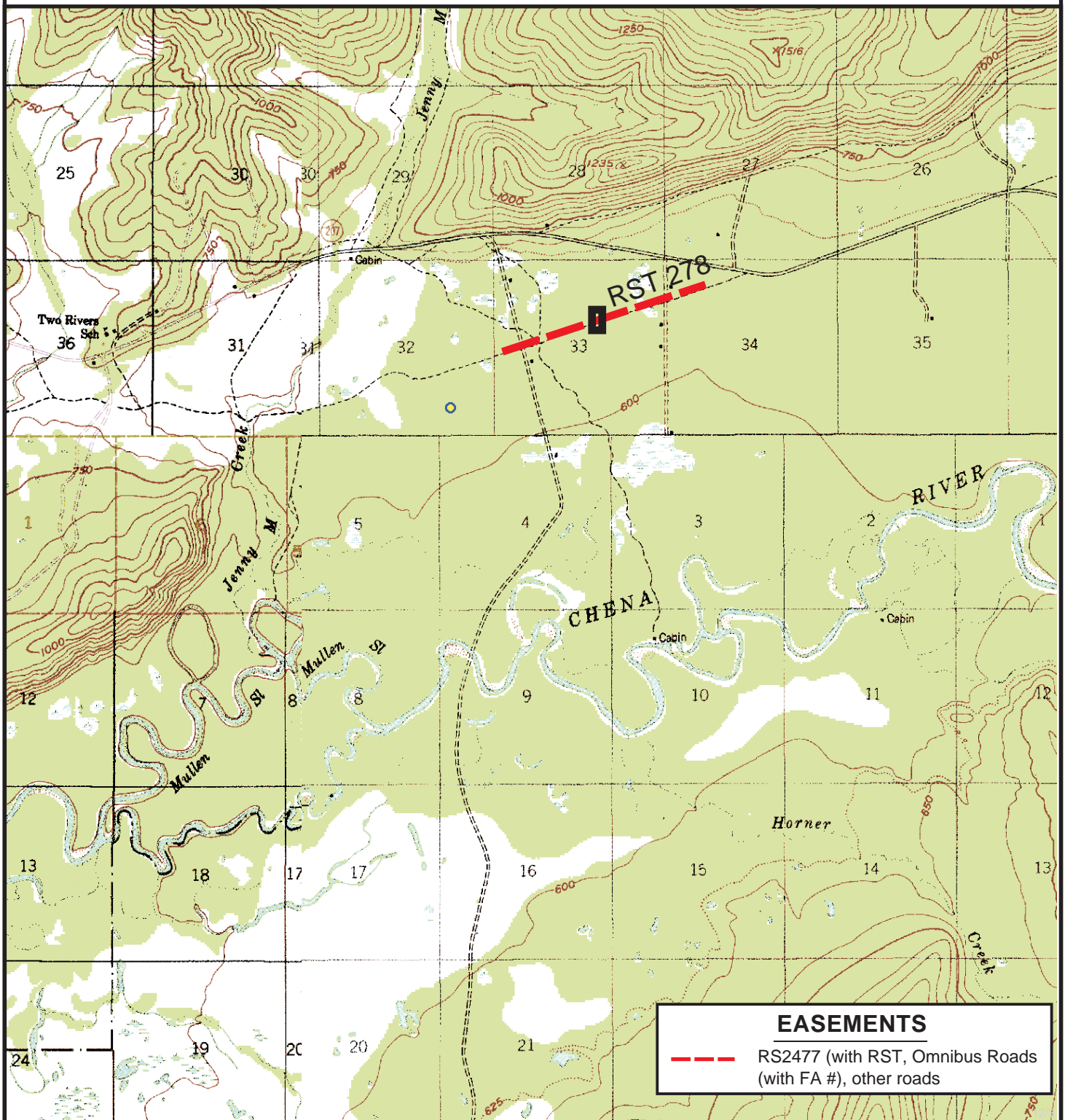
one mile

Meridian	Township	Range
FM	14-15S	10-11E



# Jennie M. Creek C

FA.JC.1001



Prepared by: DNR

Source USGS: Big Delta D-6,  
Fairbanks D-1

Date: 12/2004

one mile

Meridian  
F

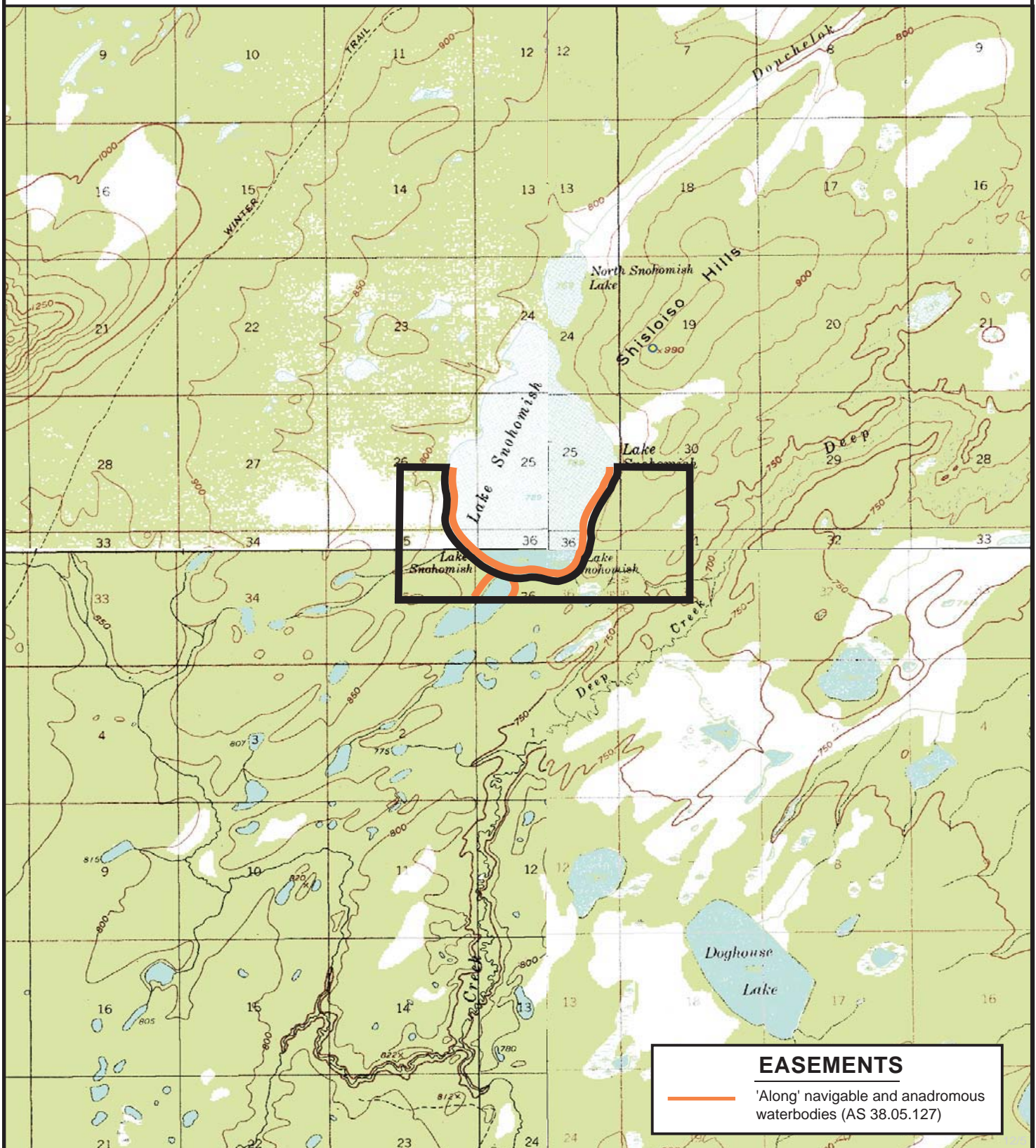
Township  
1N

Range  
4E



# Lake Snohomish

N1.LS.1001



Prepared by: DNR  
Source USGS: Anchorage C-8, D-8  
Date: 12/2004

— onemile —

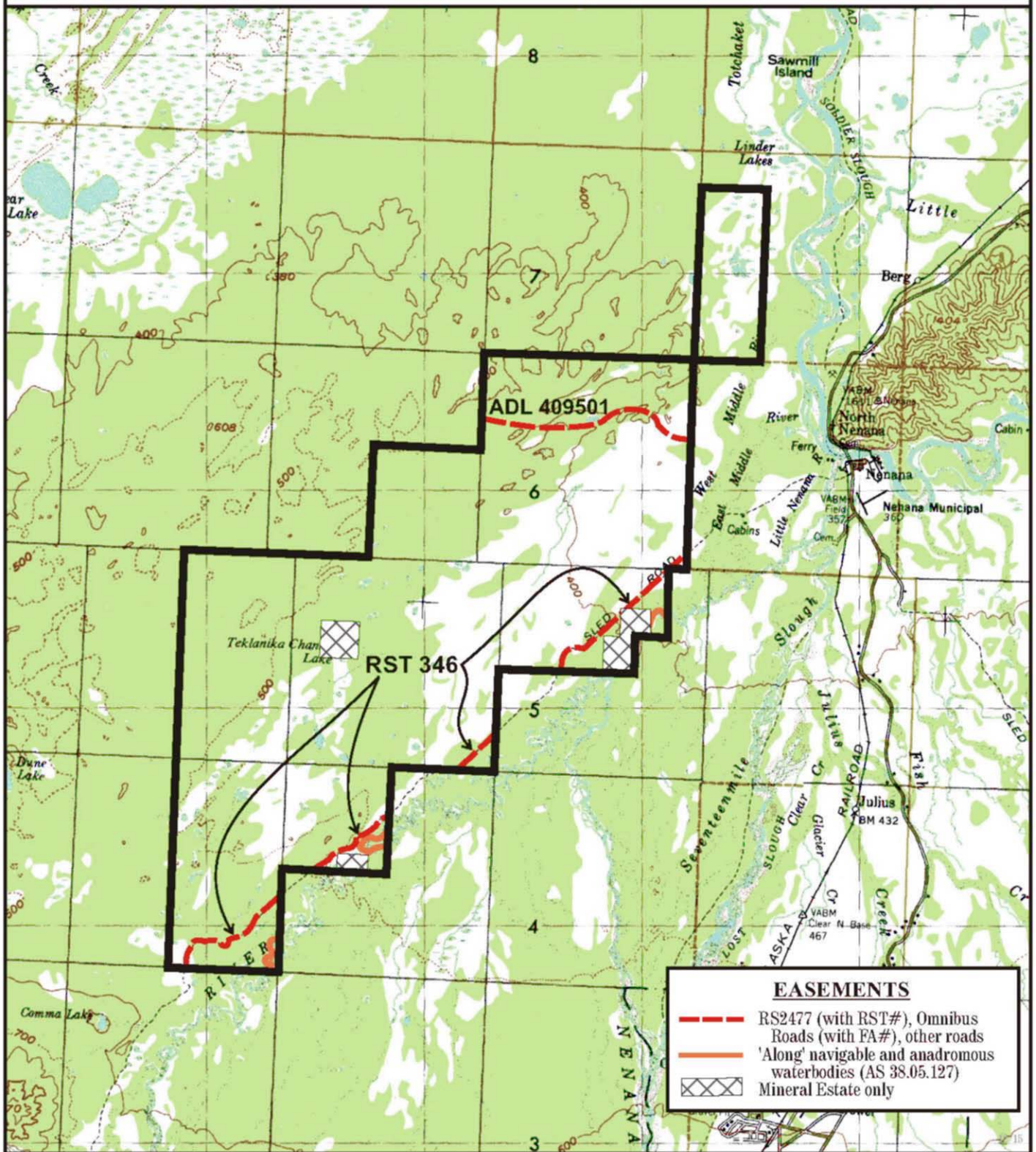
Meridian  
F

Township  
13S

Range  
25-26W



# Nenana Oil & Gas Tract



Prepared by: DNR  
 Source USGS, Fairbanks B-5 B-6, C-5, C-6  
 Date: 12/2004

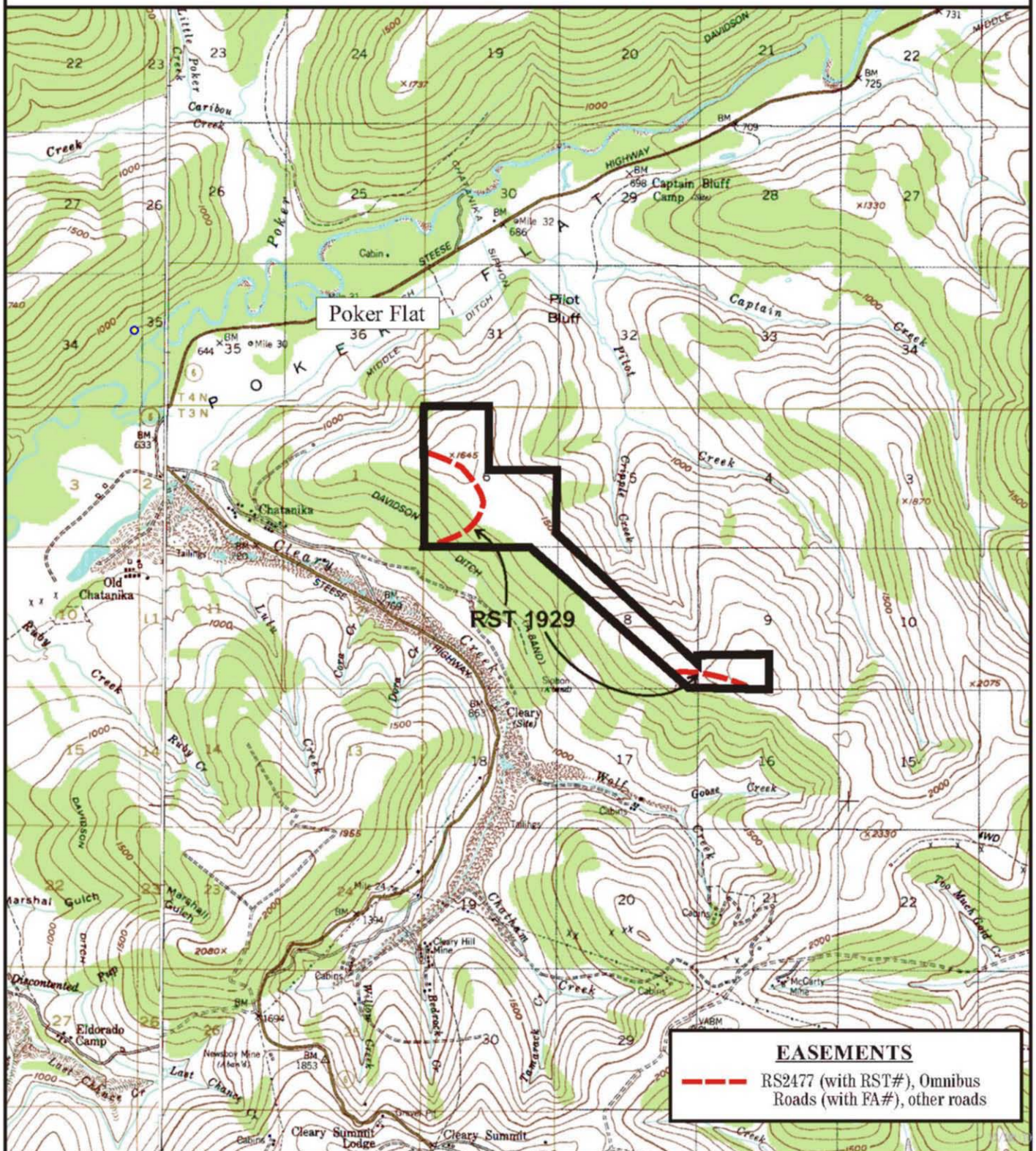
Meridian      Township      Range  
 FM      3, 4, 5, 6S      8, 9, 10, 11E

6 miles



# Poker Flat Lease

MA.PF.1001



Prepared by: DNR  
Source USGS, Livengood A-1  
Date: 12/2004

one mile

Meridian  
FM

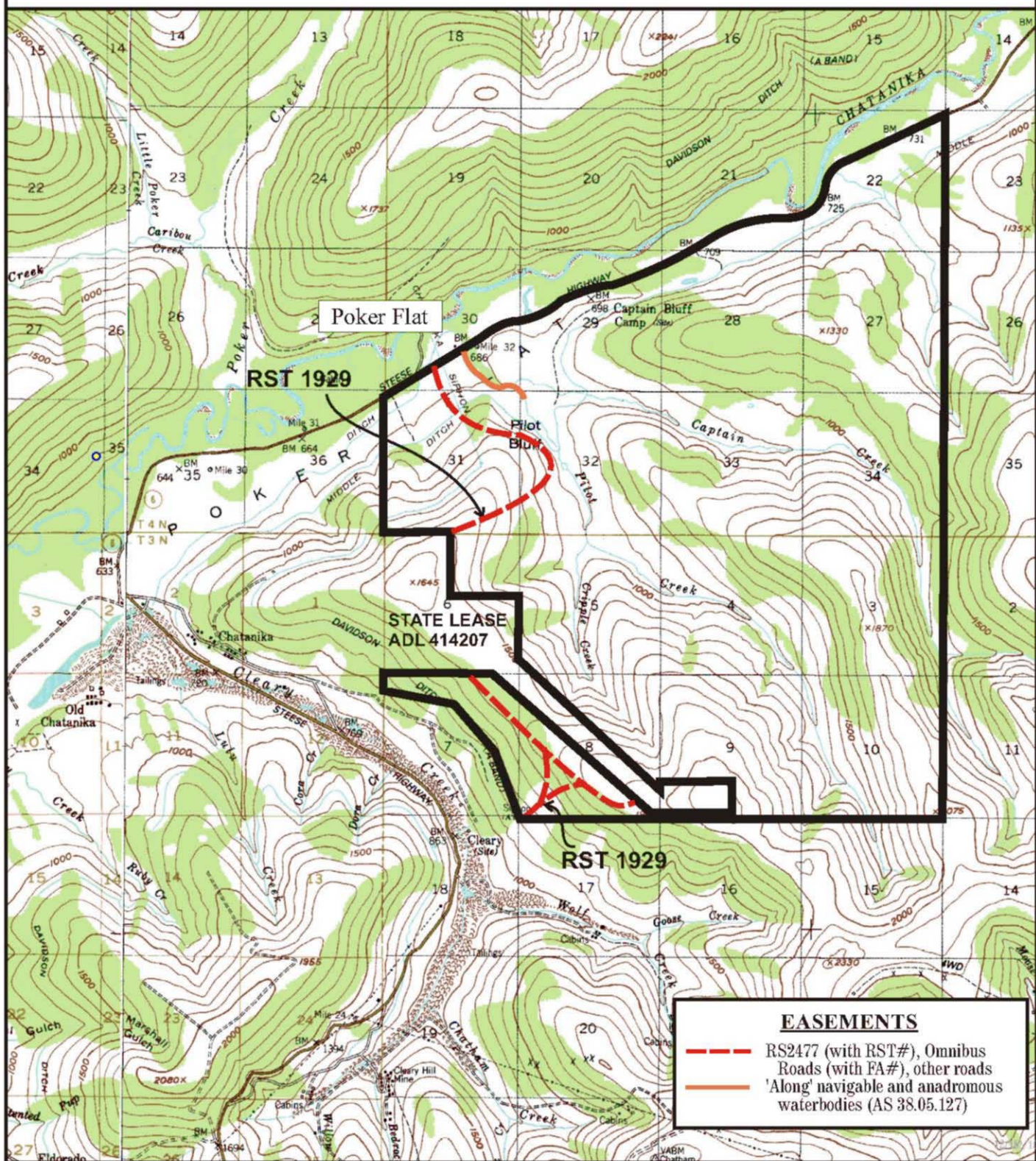
Township  
3N

Range  
2E



# Poker Flat (SUA)

MA.PF.1002



Prepared by: DNR  
Source USGS, Livengood A-1  
Date: 12/2004

one mile

Meridian  
FM

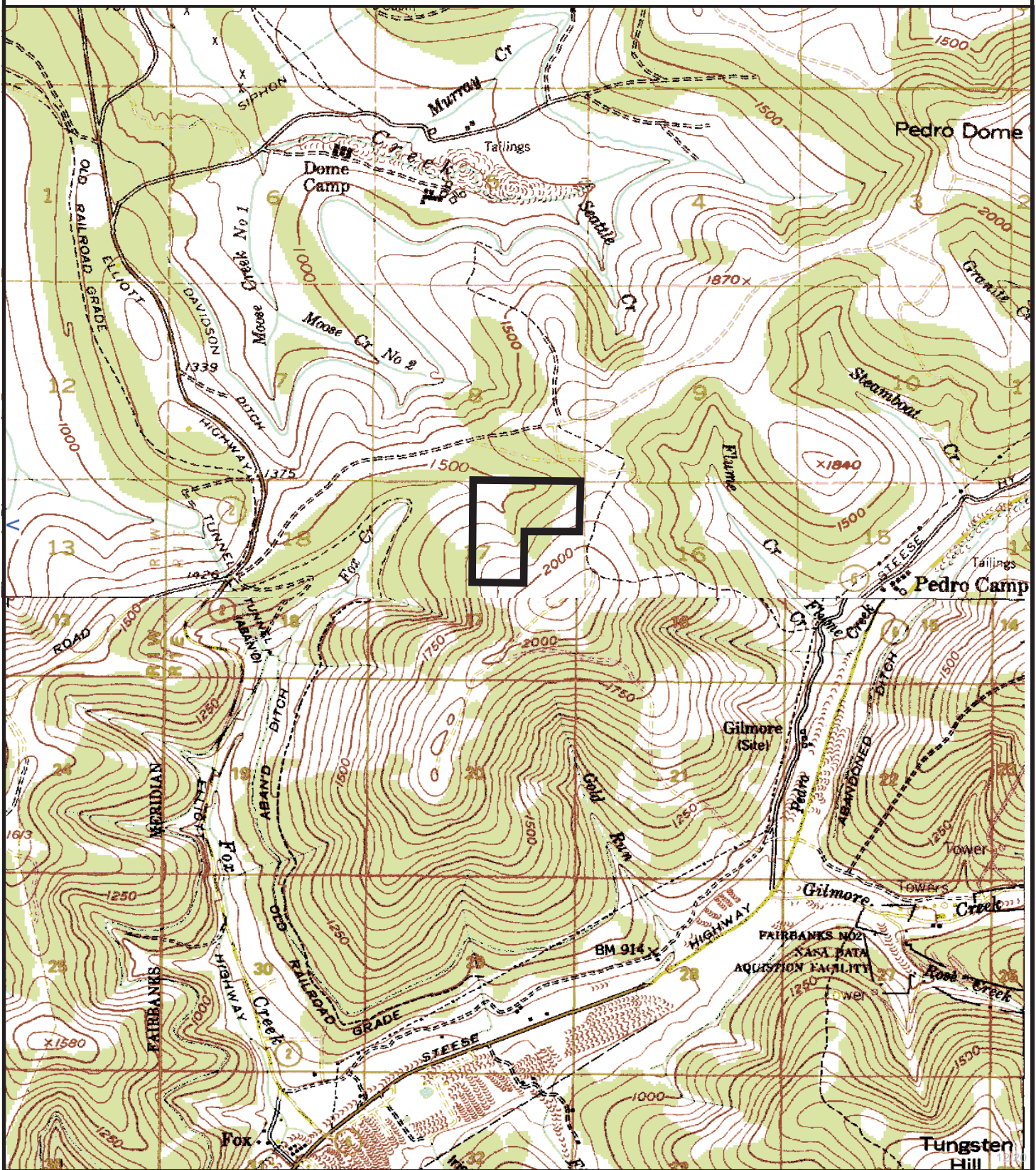
Township  
3-4N

Range  
2E



# Silver Fox Mine

MA.SF.1001



Prepared by: DNR

Source USGS: Anchorage C-8, D-8

Date: 12/2004

— one mile —

Meridian

F

Township

2N

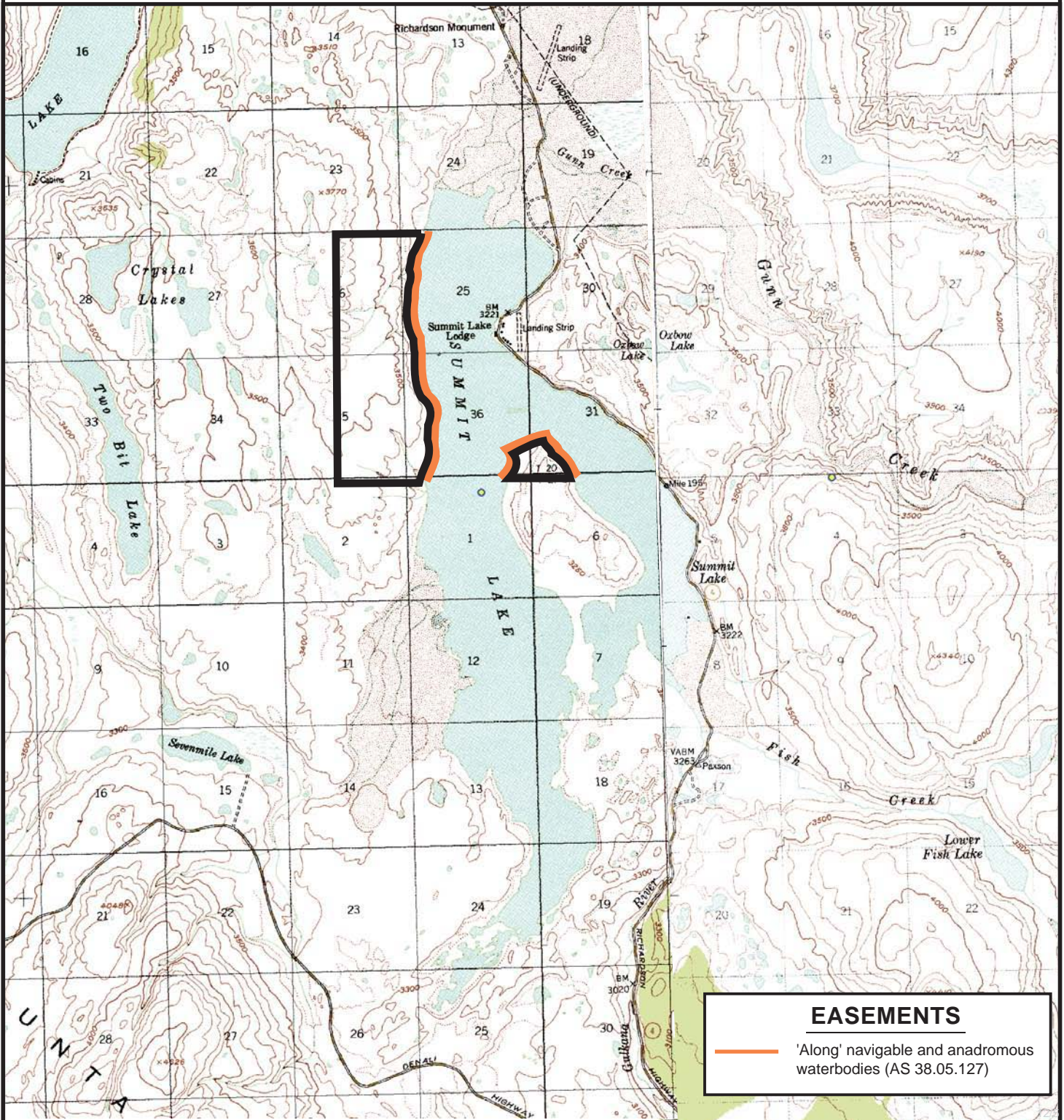
Range

1E



# Summit Lake

N5.RS.1001



Prepared by: DNR  
Source USGS: Mt. Hayes A-3, A-4  
Date: 12/2004

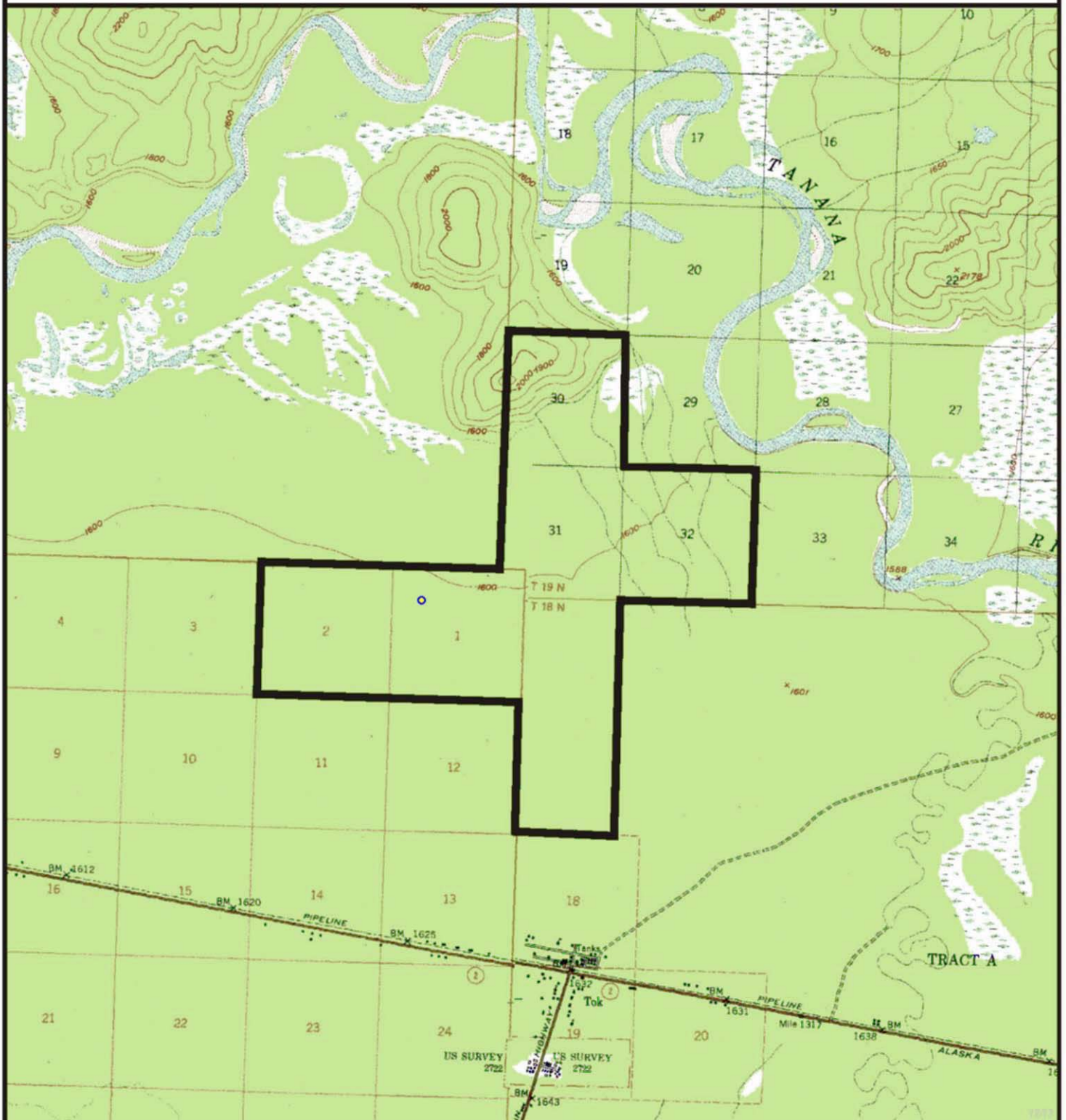
— one mile —

Meridian	Township	Range
F	20-21S	11-12E



# Tok Research Forest

TV.RF.1001



Prepared by: DNR  
Source USGS, Tanacross B-4, B-5  
Date: 12/2004

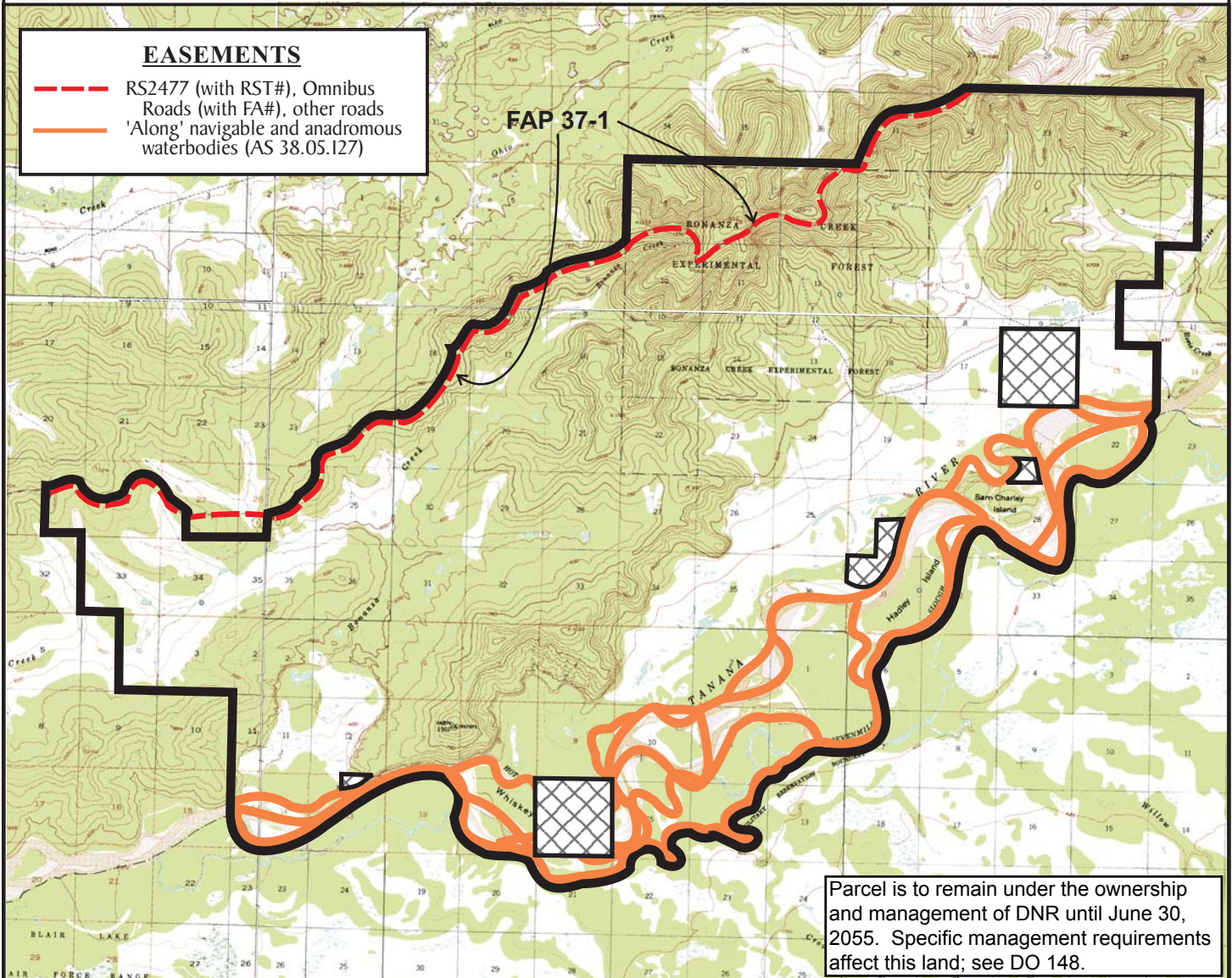
— one mile —

Meridian	Township	Range
CRM	18-19N	12-13E



# University Research Forest

NS.EX.1002



Prepared by: DNR; rhc  
Source USGS Fairbanks C-3, D-3, D-4  
Date: 12/2004

one mile



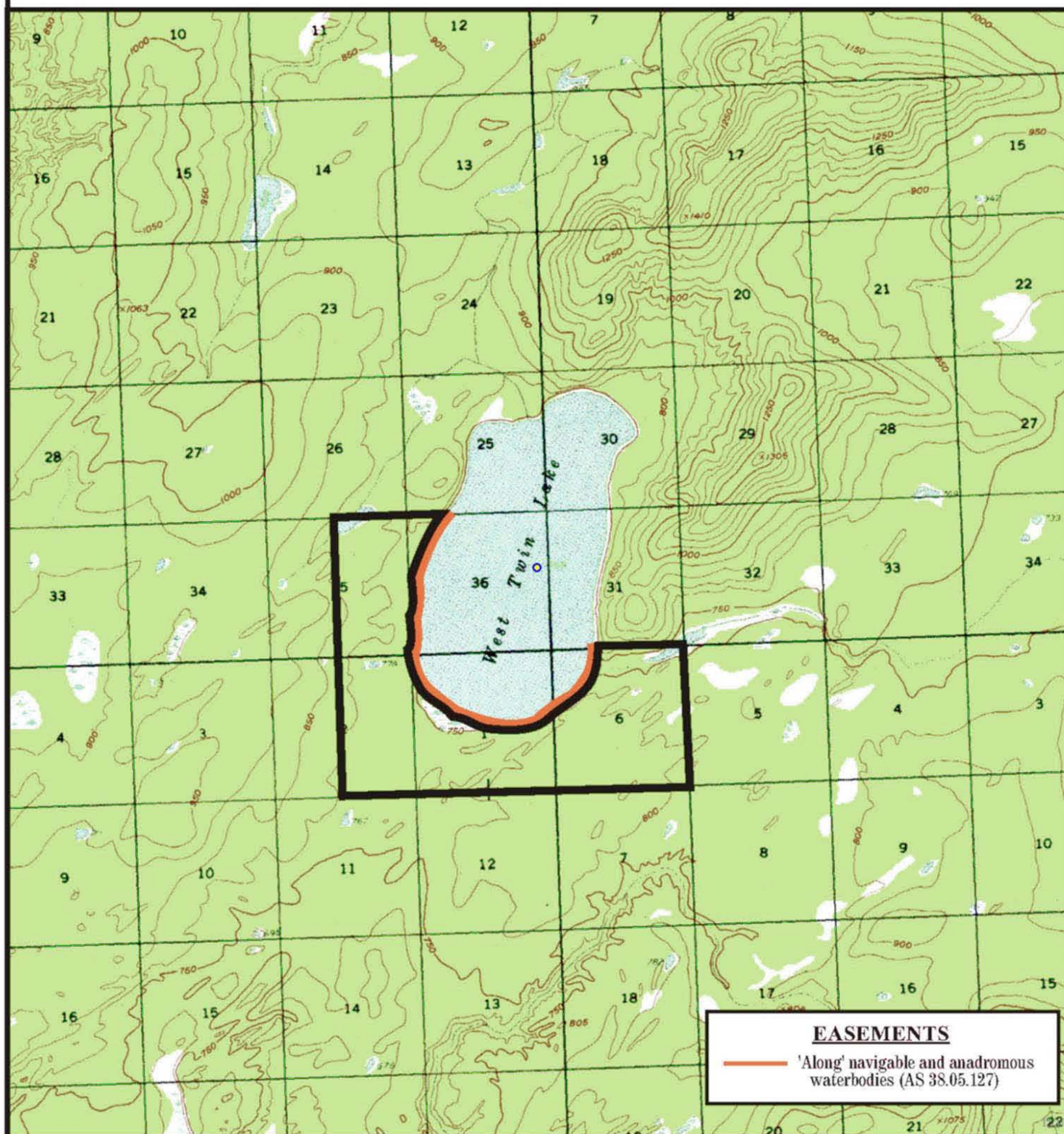
## Excluded Lands

Meridian	Township	Range
FM	1-3S	3W-5W



## West Twin Lake

N1.WT.1001



Prepared by: DNR

Source USGS, Kantishna River B-2

Date: 12/2004

one mile

Meridian  
FM

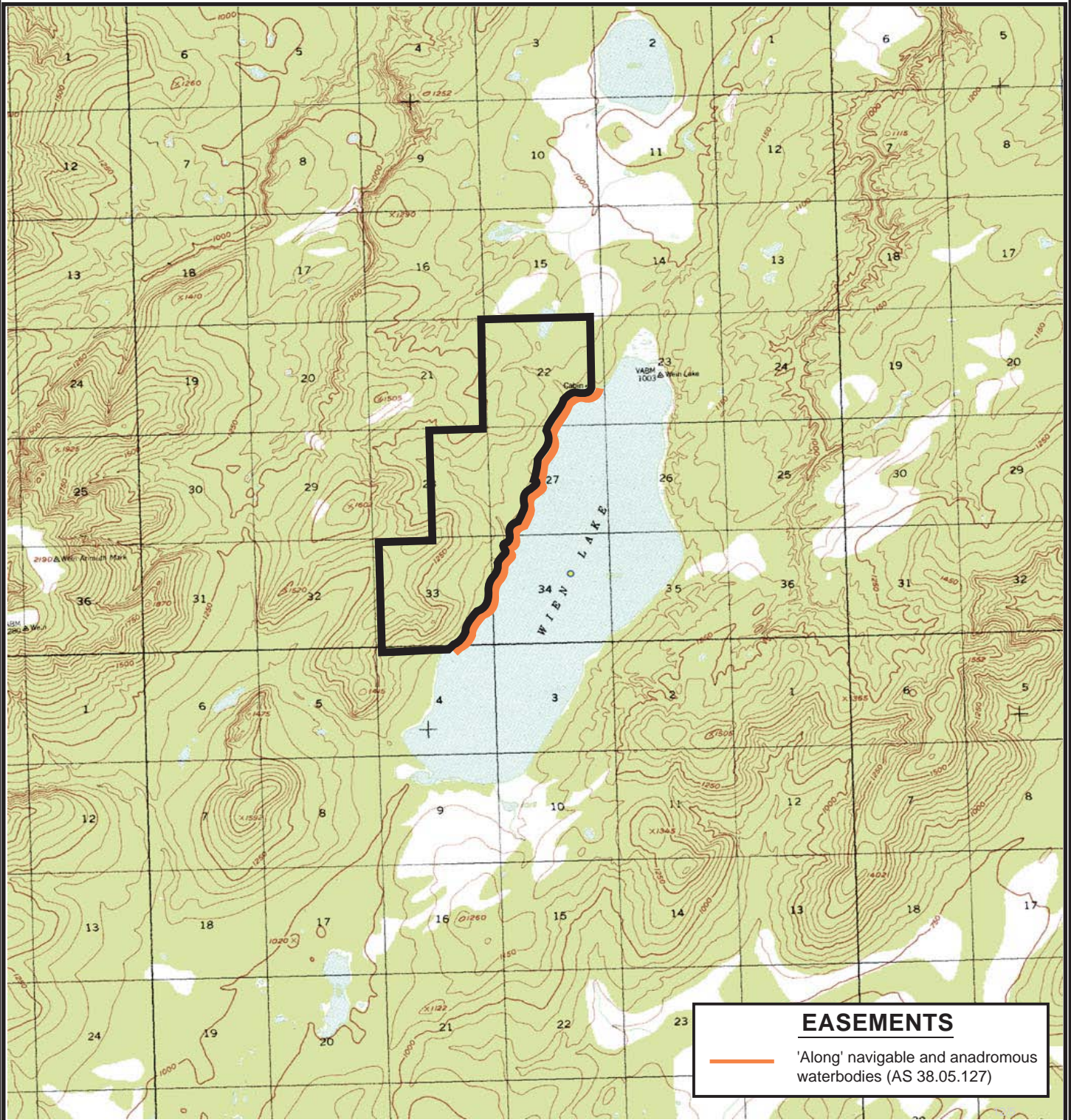
Township  
5-6S

Range  
16-17W



# Wien Lake

N5.WL.1001



Prepared by: DNR  
Source USGS: Kantishna River B-3  
Date: 12/2004

one mile

Meridian  
F

Township  
6-7S

Range  
19W