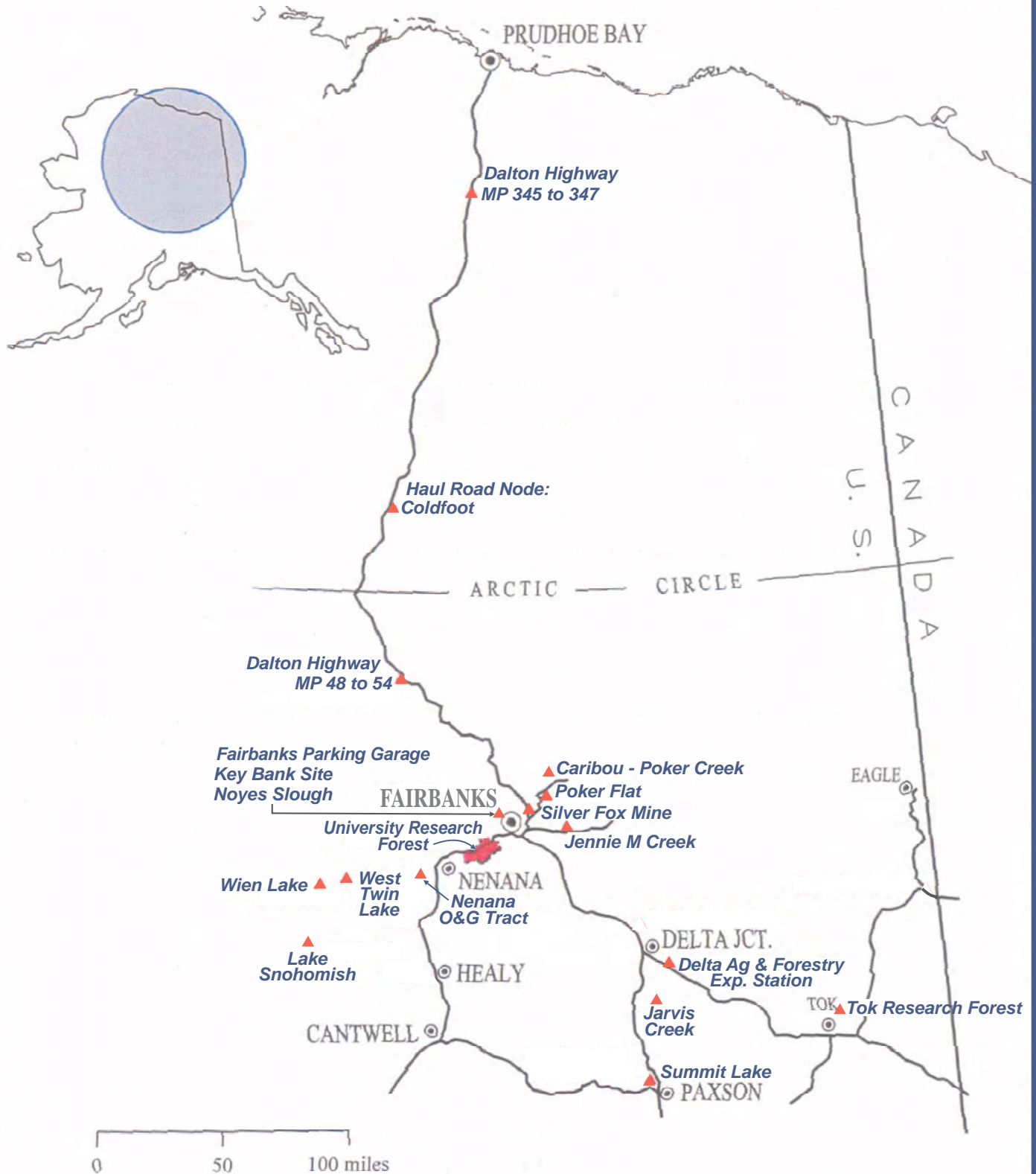
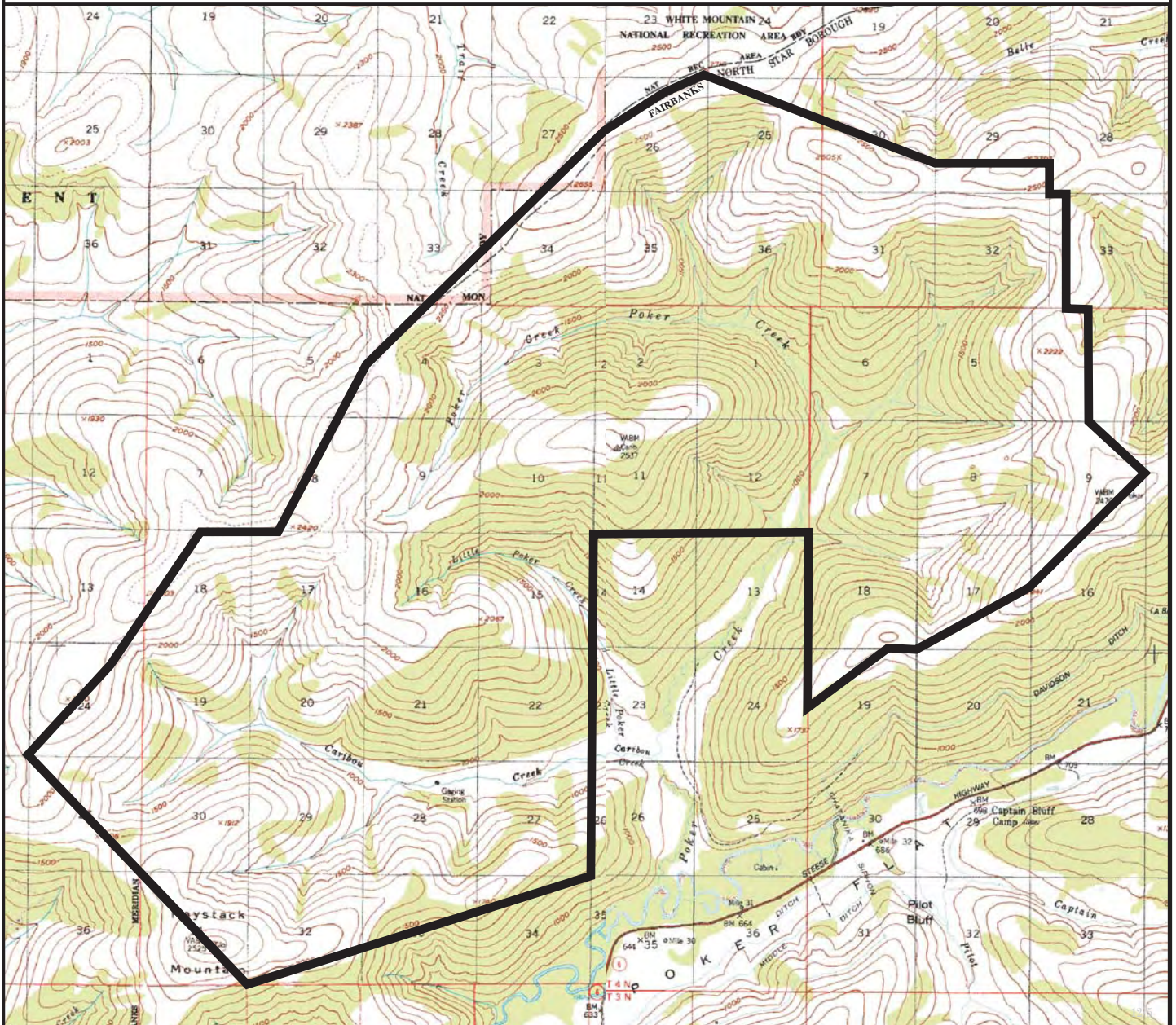


NORTHERN - INTERIOR REGION



Caribou-Poker Creeks Watershed

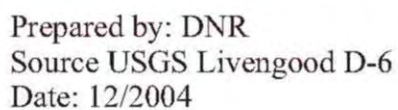


Prepared by: DNR
Source USGS Livengood A1, A-2
Date: 12/2004

one mile

Meridian	Township	Range
F	04N	1E-2E

DH.YR.1001

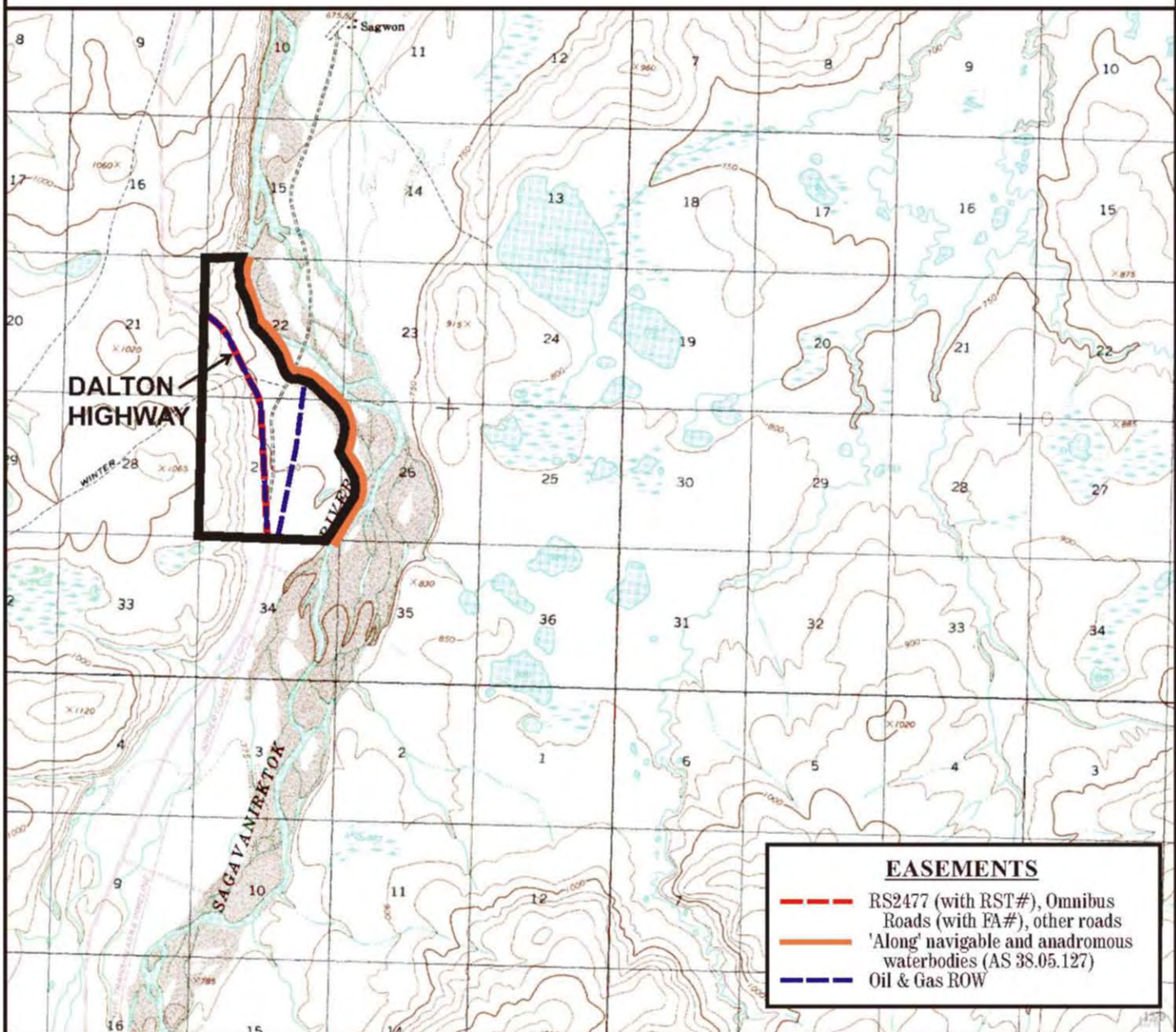


one mile

Meridian	Township	Range
FM	12N	10-11W

Dalton Highway MP 345 to 347

DH.SR.1001



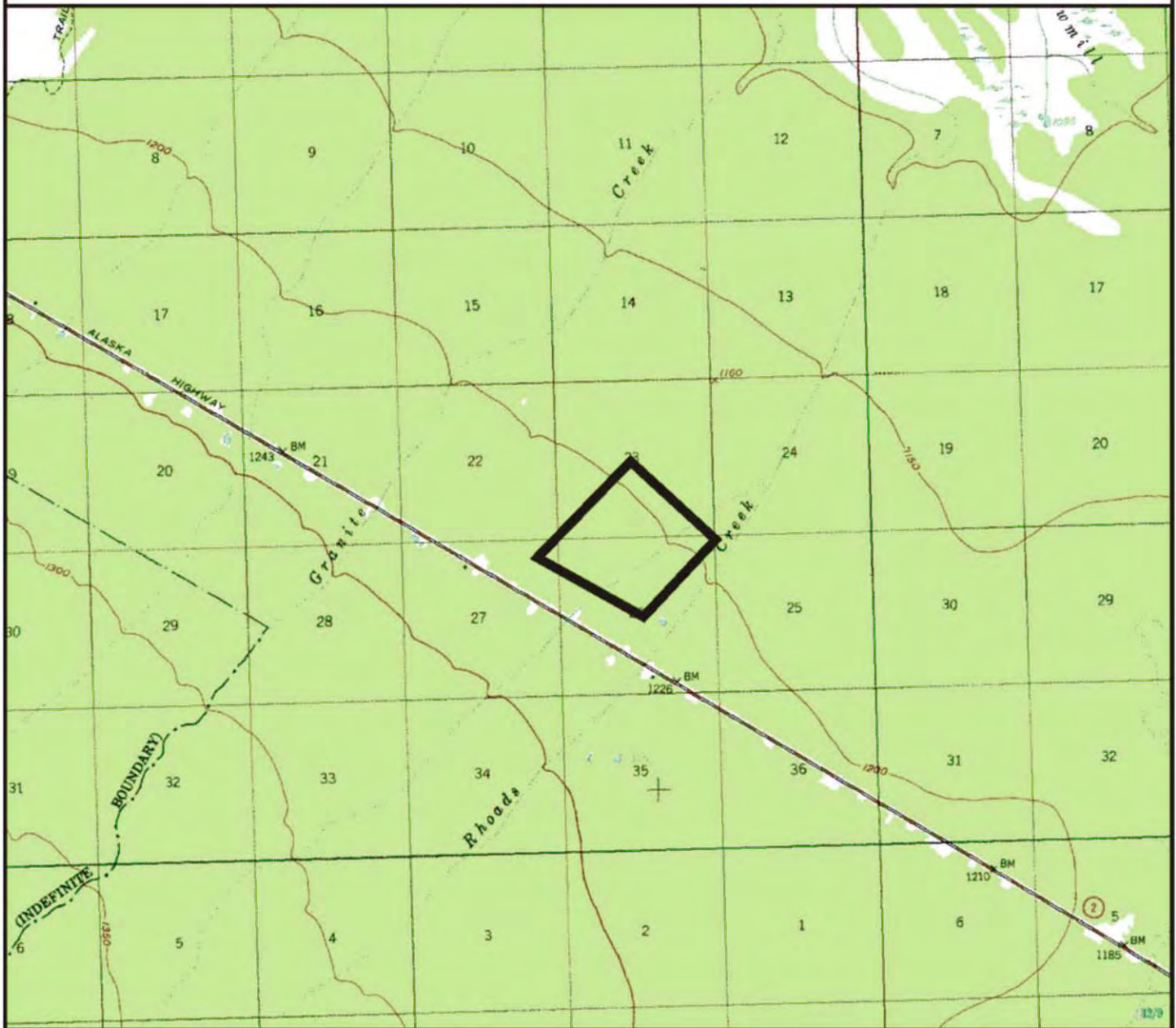
Prepared by: DNR
Source USGS Sagavanirktok B-3
Date: 12/2004

one mile

Meridian	Township	Range
UM	1S	14E

Delta Ag & Forestry Exp. Station

MA.XS.1001



Prepared by: DNR
Source USGS Mt. Hayes D-3
Date: 12/2004

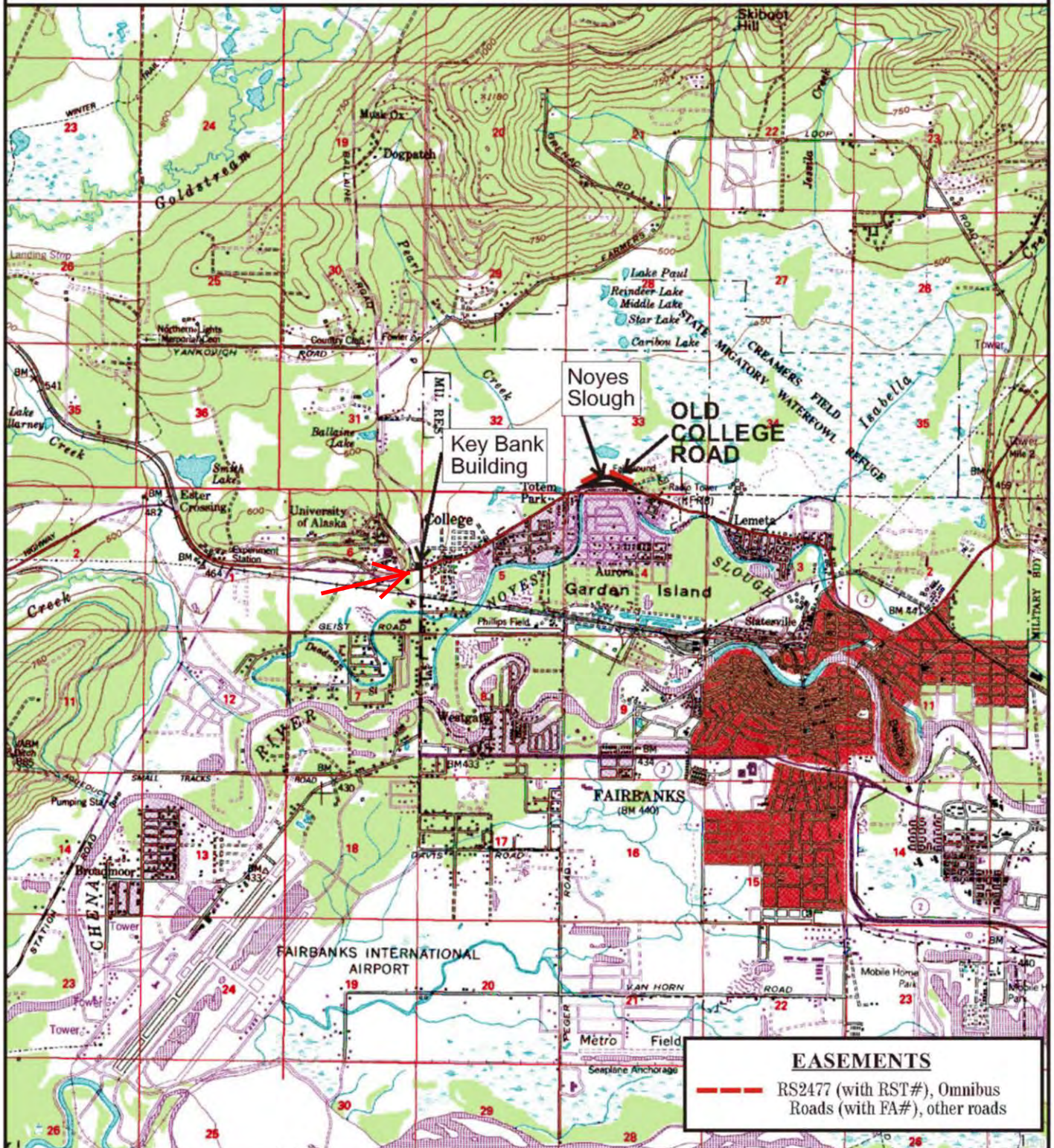
one mile

Meridian	Township	Range
FM	11S	12E

Fairbanks Area Parcels

N2.FA.1003

N2.FA.1004



Prepared by: DNR
 Source USGS Fairbanks D2
 Date: 12/2004

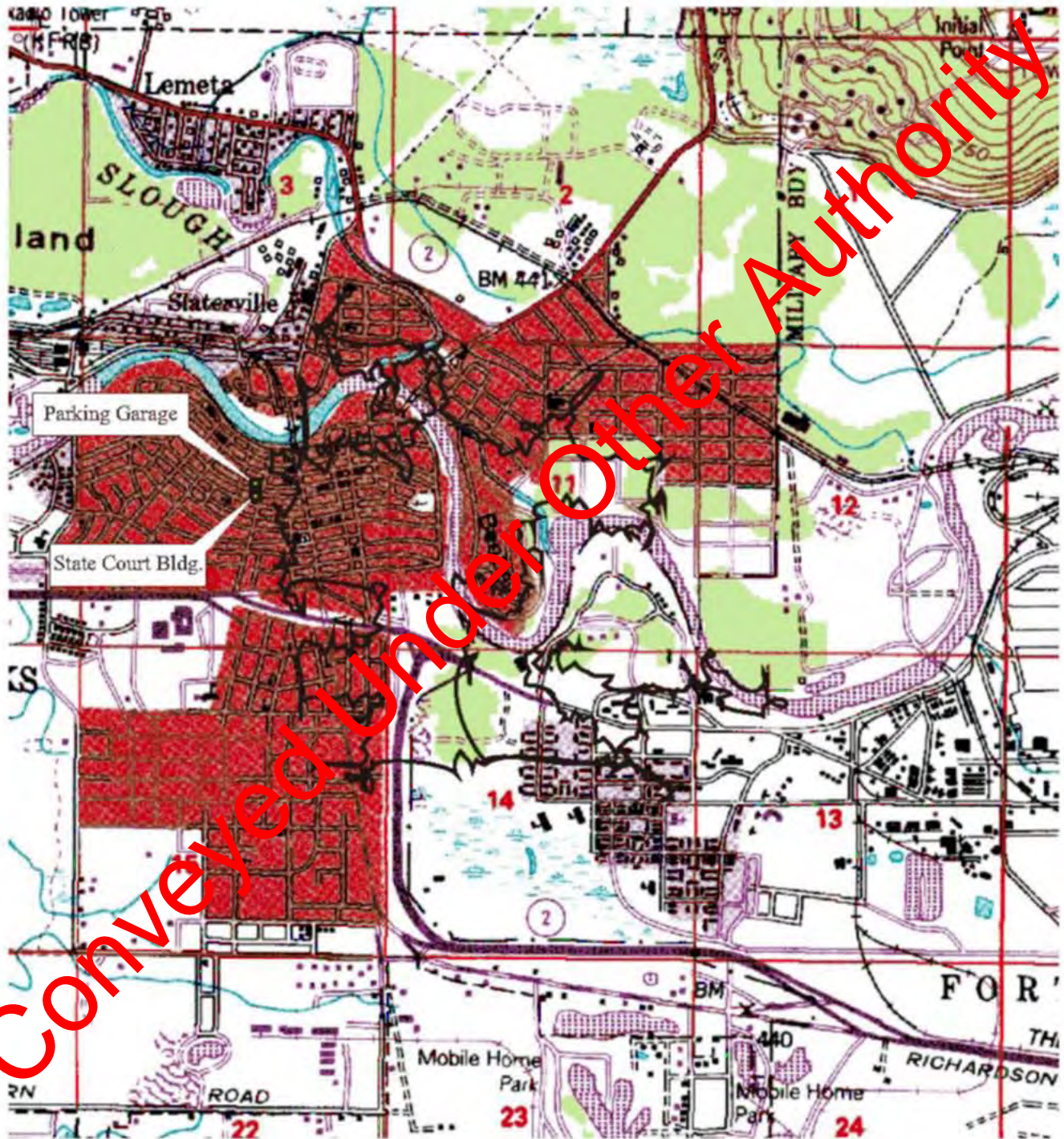
one mile

Meridian	Township	Range
FM	1N-1S	1W

Fairbanks Downtown Parcels

N2.FA.1001 Parking Garage

N2.FA.1002 Old State Court Building



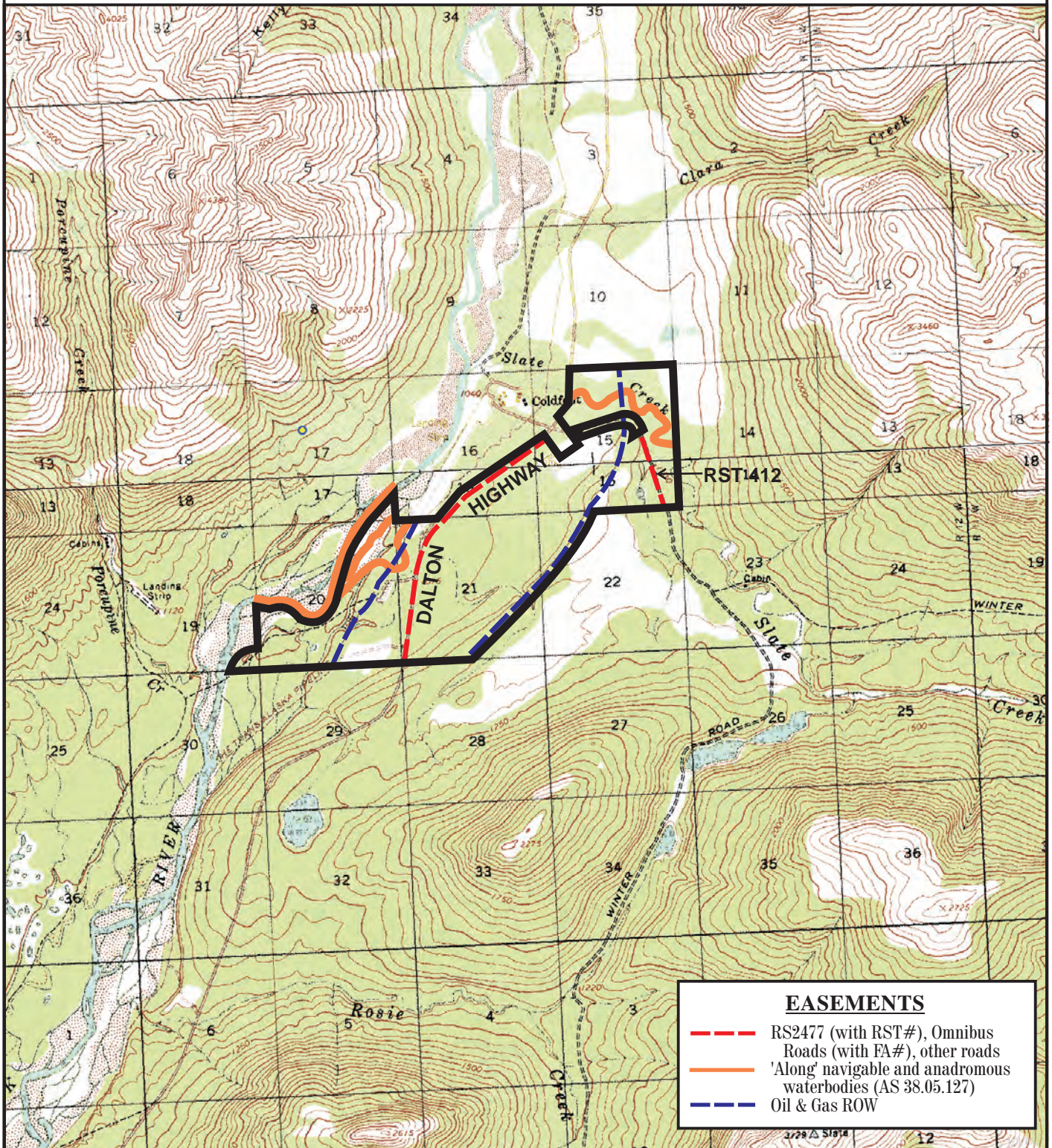
Prepared by: DNR
Source USGS Fairbanks D-2
Date: 12/2004

1/2 mile

Meridian	Township	Range
F	1S	1W

Haul Road Nodes - Coldfoot

MA.HR.1001

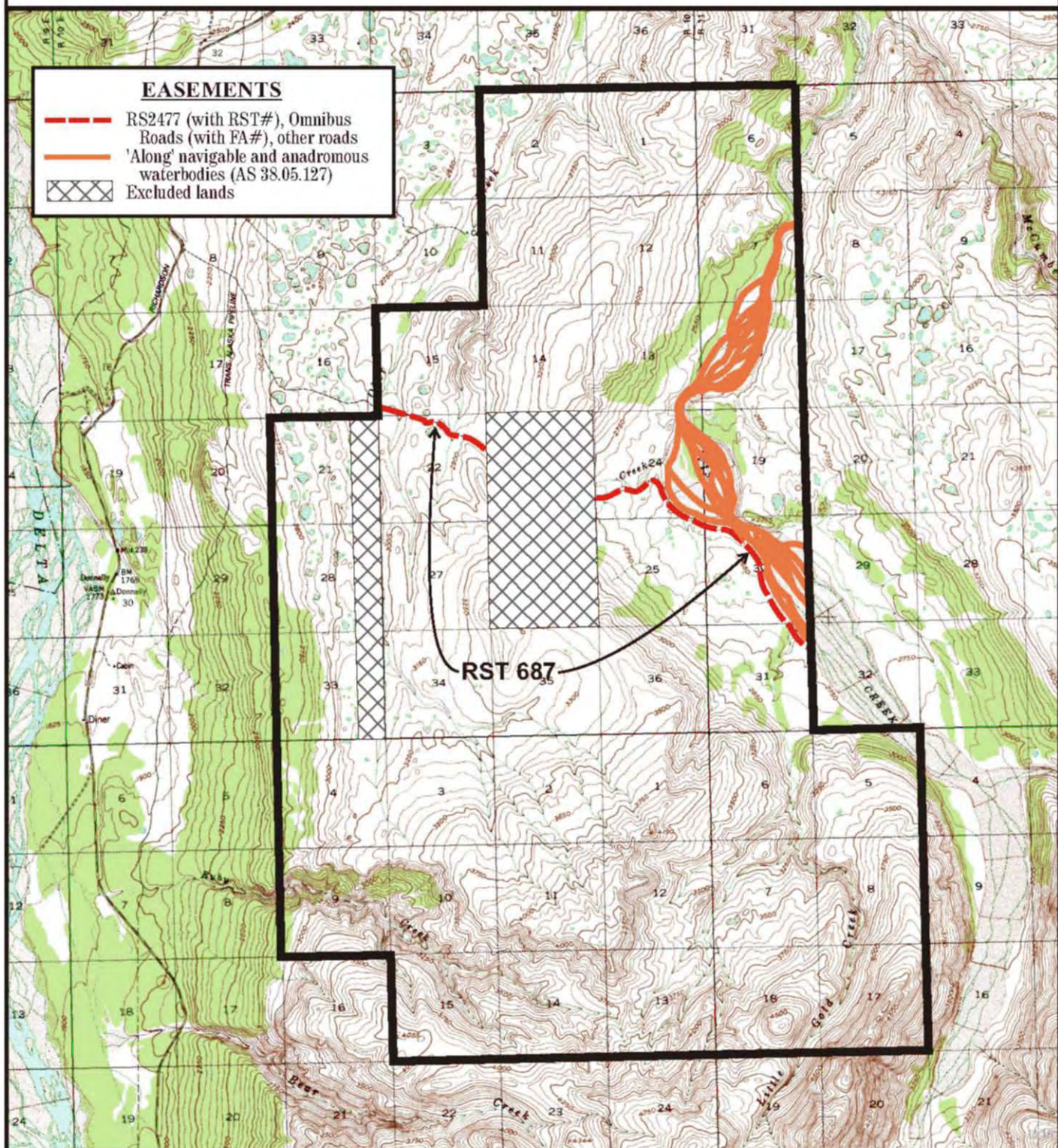


Prepared by: DNR
Source USGS Wiseman A-1, B-1
Date: 12/2004

one mile

Meridian	Township	Range
FM	28N	12W

Jarvis Creek Coal Field



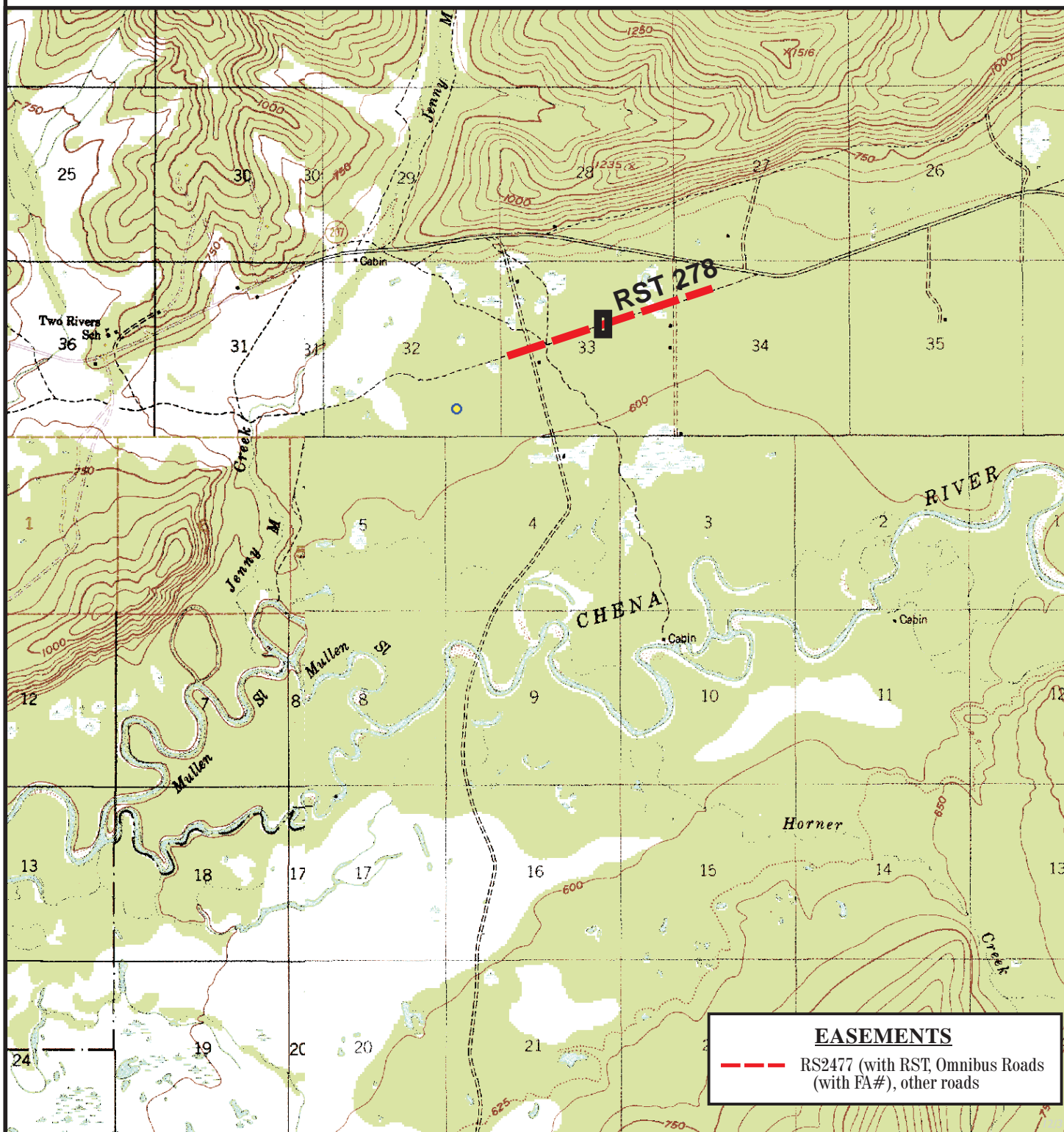
Prepared by: DNR
 Source USGS, Mt. Hayes C-4
 Date: 12/2004

one mile

Meridian	Township	Range
FM	14-15S	10-11E

Jennie M. Creek C

FA.JC.1001



Prepared by: DNR

Source USGS, Big Delta D-6, Fairbanks D-1

Date: 12/2004

one mile

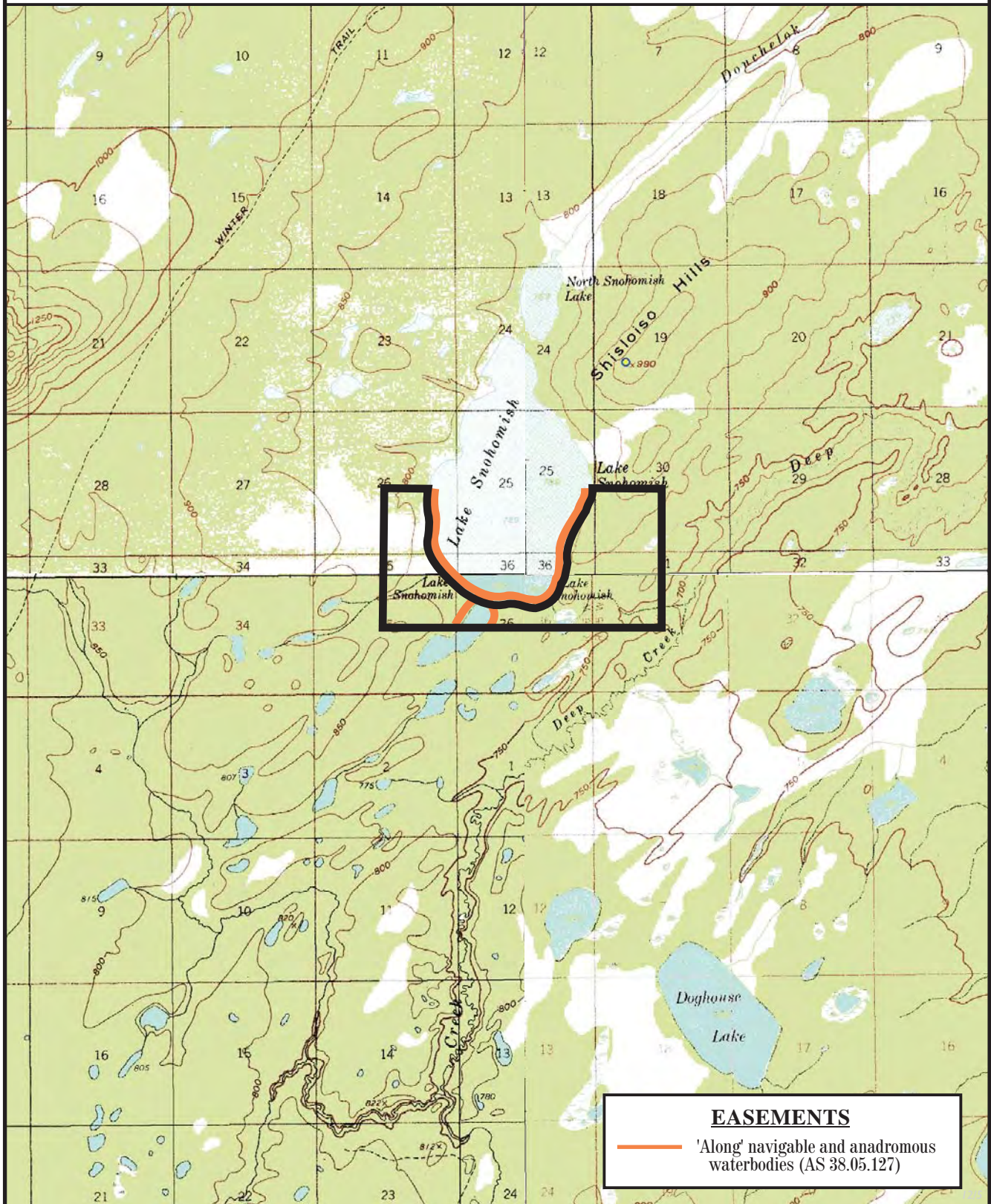
Meridian
FM

Township
1N

Range
4E

Lake Snohomish

N1.LS.1001



Prepared by: DNR
Source USGS, Mt. McKinley D-5,
D-6, C-5, C-6
Date: 12/2004

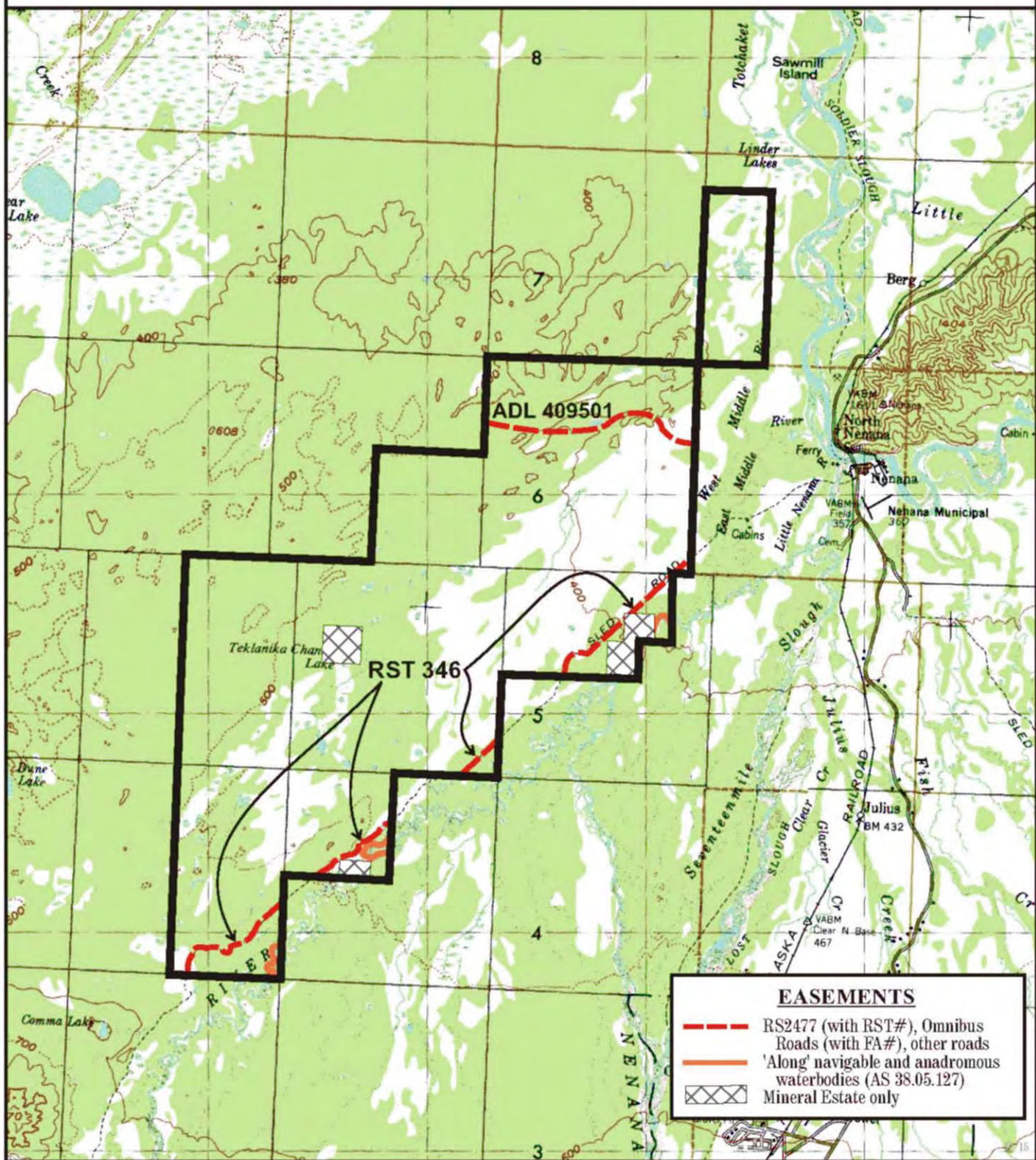
— one mile —

Meridian
FM

Township
13S

Range
R25W-26W

Nenana Oil & Gas Tract



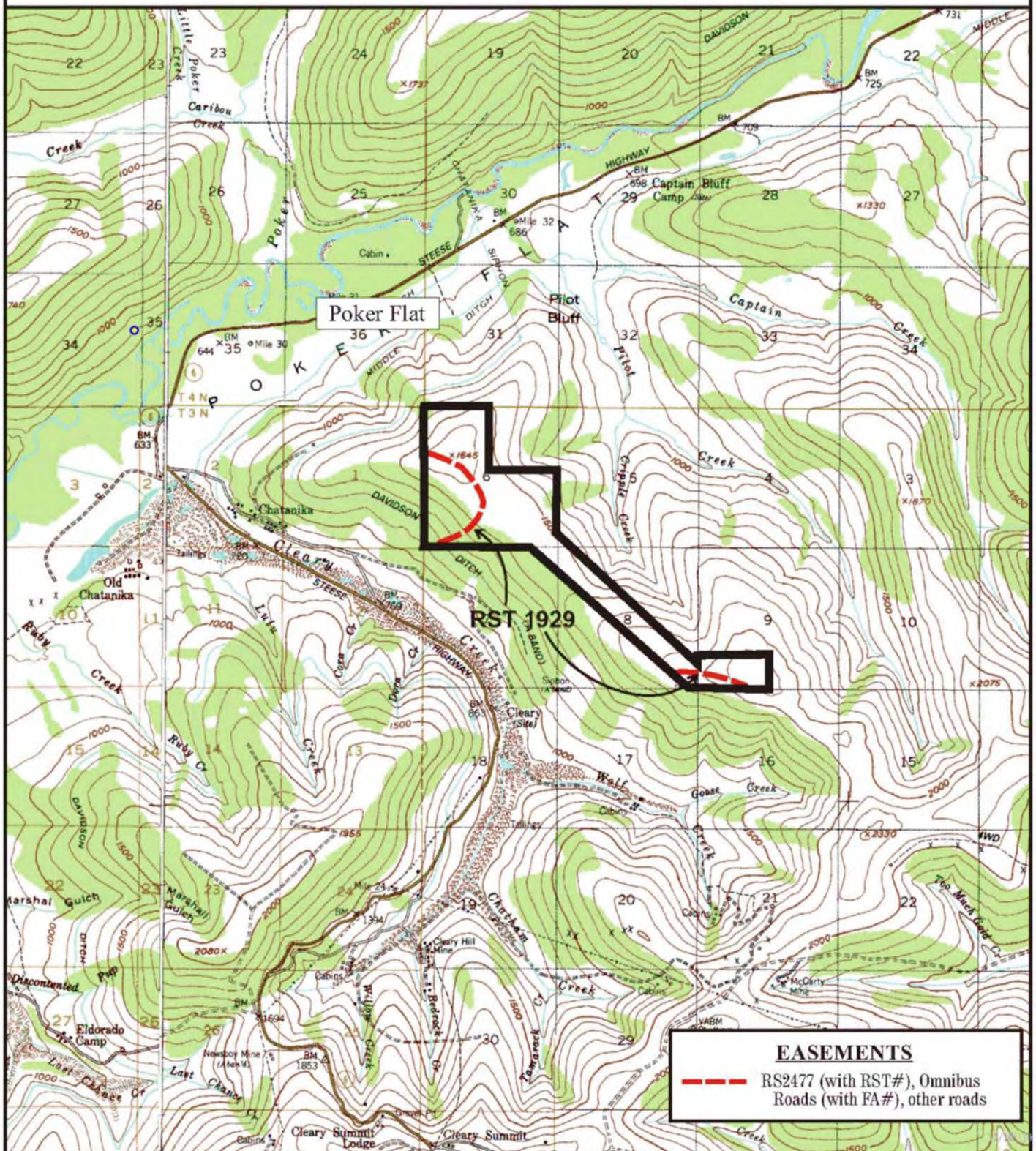
Prepared by: DNR
 Source USGS, Fairbanks B-5 B-6, C-5, C-6
 Date: 12/2004

Meridian Township Range
 FM 3, 4, 5, 6S 8, 9, 10, 11E

6 miles

Poker Flat Lease

MA.PF.1001



Prepared by: DNR
 Source USGS, Livengood A-1
 Date: 12/2004

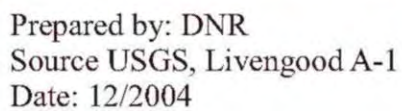
one mile

Meridian
 FM

Township
 3N

Range
 2E

MA.PF.1002



A horizontal line with vertical tick marks at each end, labeled "one mile" below it.

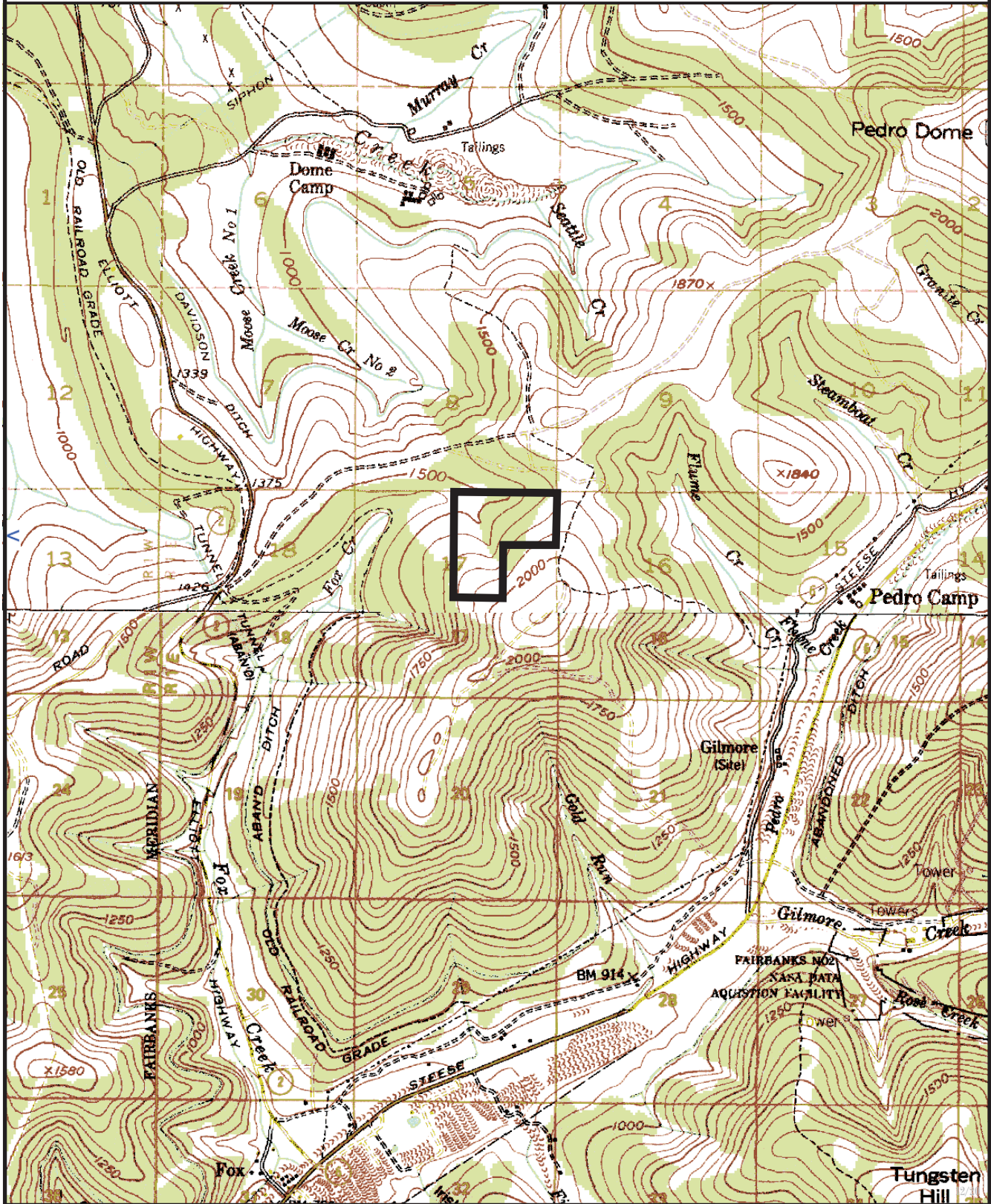
Meridian
FM

Township
3-4N

Range
2E

Silver Fox Mine

MA.SF.1001



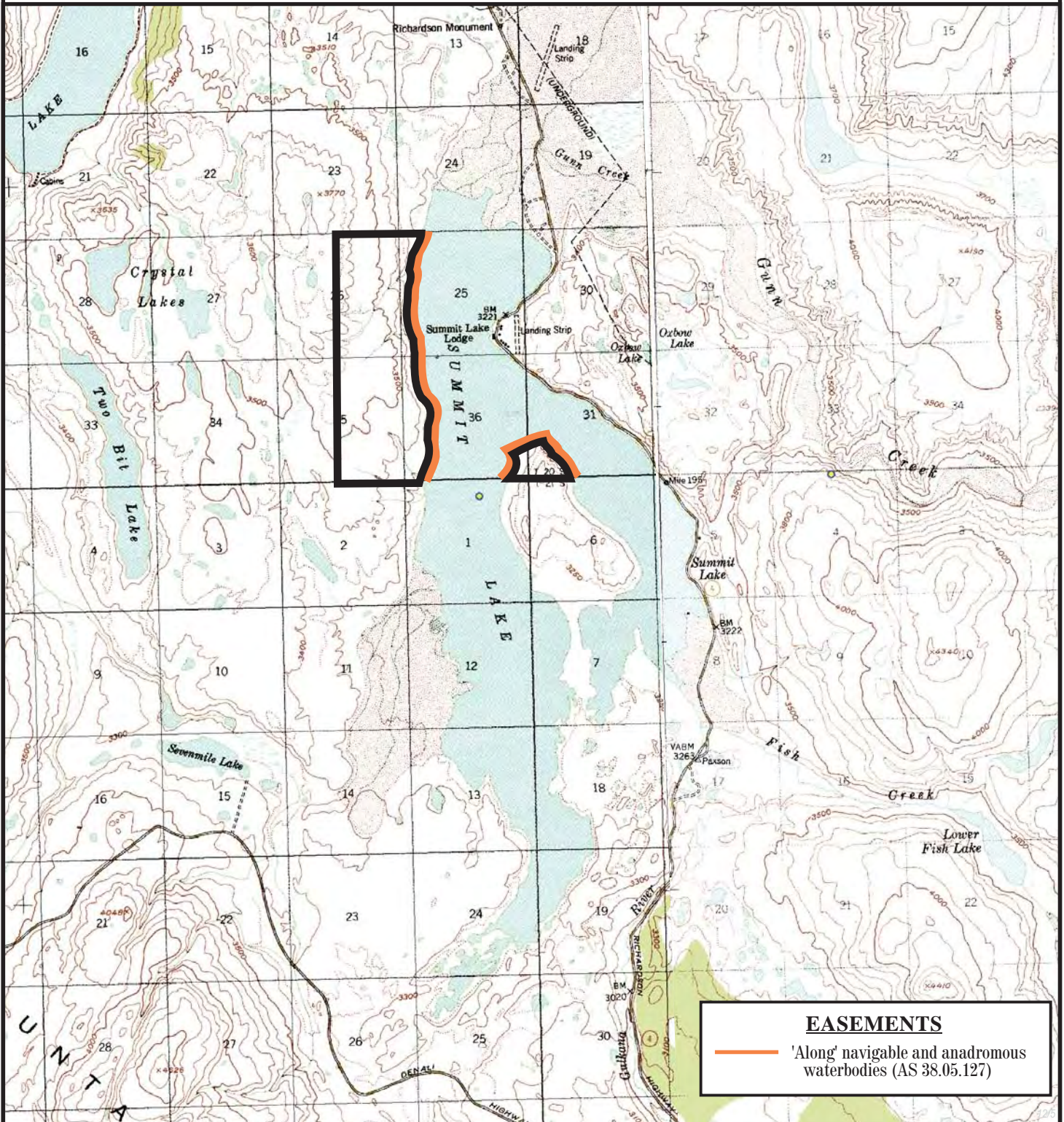
Prepared by: DNR/rhc
 Source USGS, Livengood A-2
 Date: 12/2004

— one mile —

Meridian FM
 Township 2N
 Range R1E

Summit Lake

N5.RS.1001



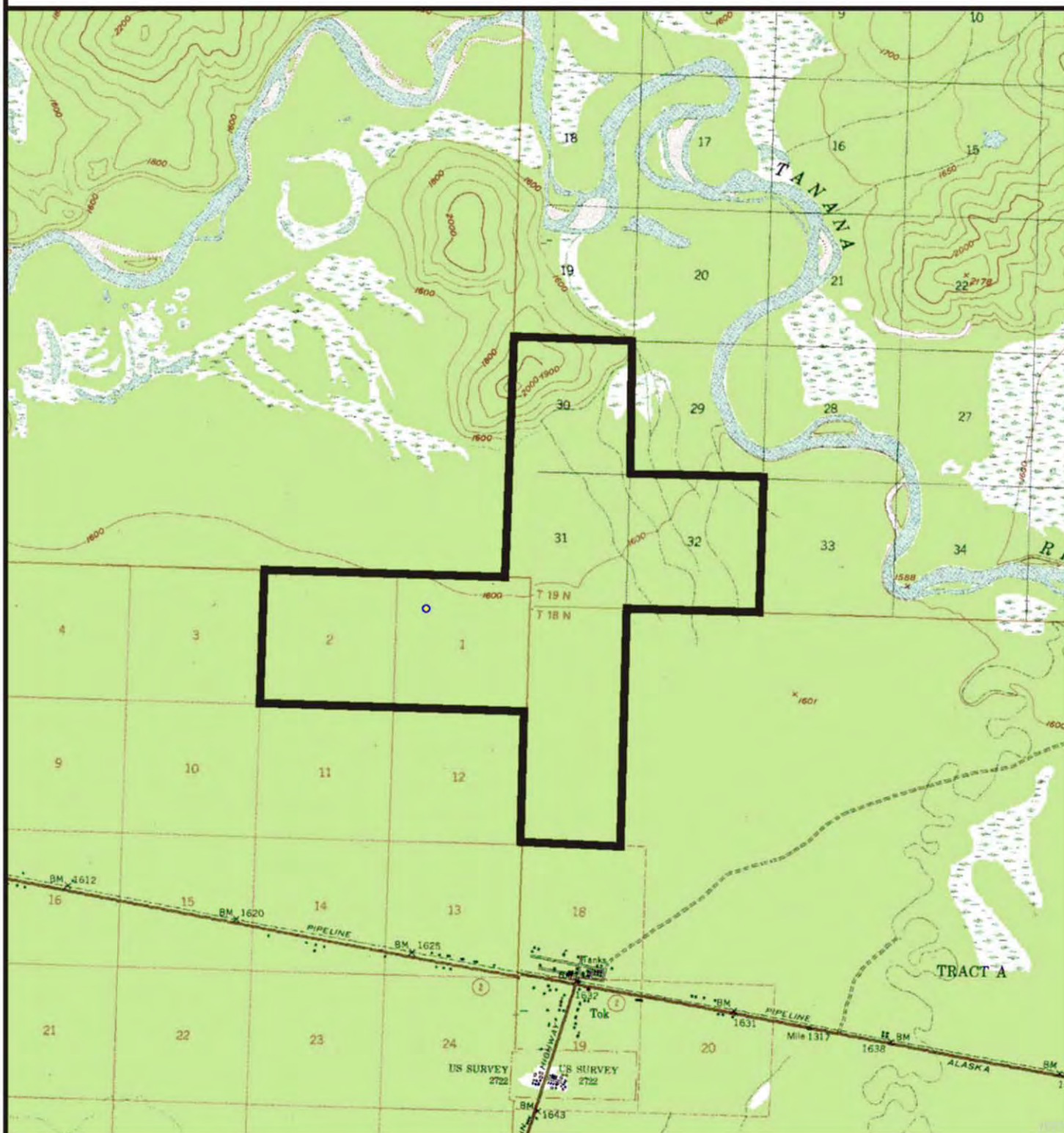
Prepared by: DNR
 Source USGS, Mt. Hayes, A-3, A-4
 Date: 12/2004

one mile

Meridian FM
 Township 20S-21S
 Range 11E-12E

Tok Research Forest

TV.RF.1001



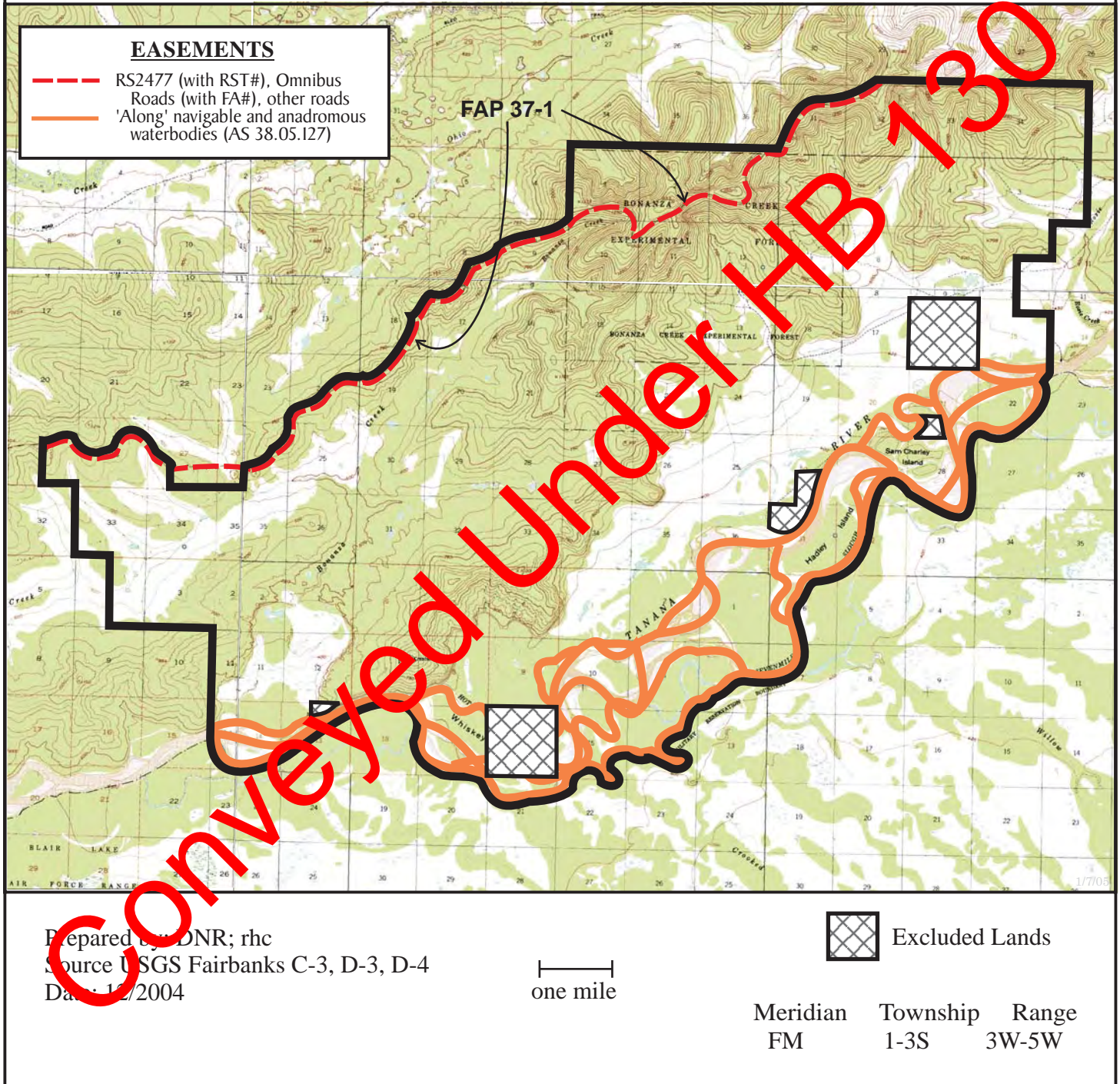
Prepared by: DNR
Source USGS, Tanacross B-4, B-5
Date: 12/2004

— one mile —

Meridian	Township	Range
CRM	18-19N	12-13E

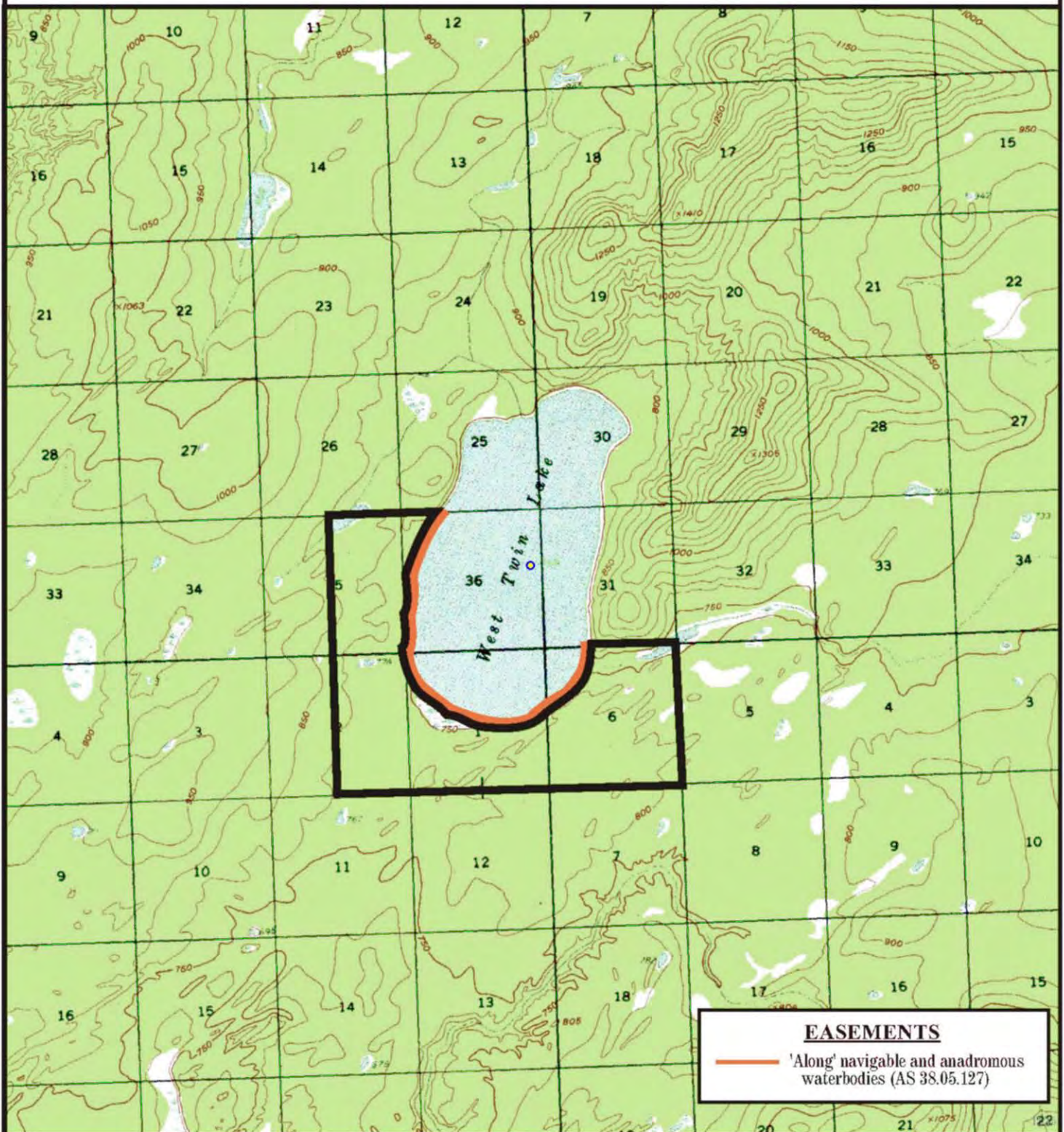
University Research Forest

NS.EX.1002



West Twin Lake

N1.WT.1001



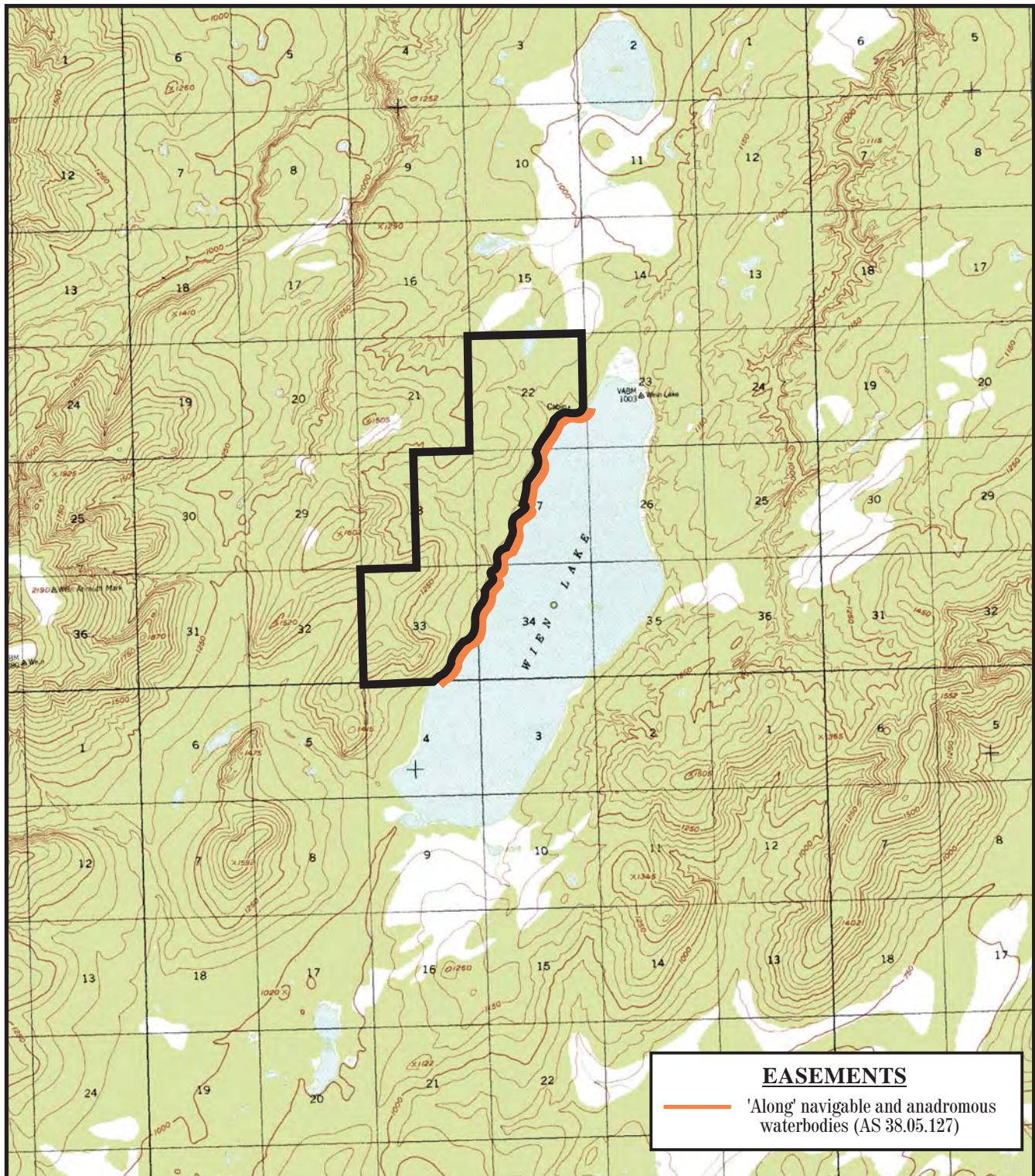
Prepared by: DNR
Source USGS, Kantishna River B-2
Date: 12/2004

— one mile —

Meridian	Township	Range
FM	5-6S	16-17W

Wien Lake

N5.WL.1001



Prepared by: DNR

Source USGS, Kantishna River B-3

Date: 12/2004

—|—
one mile

Meridian
FM

Township
6S-7S

Range
19W