

## Management Unit 1

# West Turnagain Arm

---

### BACKGROUND

This management unit includes state tidelands and isolated parcels of state uplands between Potter and Bird Point. The tidelands addressed by this plan include only those located outside of Chugach State Park. The isolated parcels are small state-owned lots near McHugh Creek, Rainbow, and Bird.

This management unit consists of two subunits:

#### Subunit 1a

Subunit 1a includes approximately 15,000 acres of state tidelands. These tidelands are subject to very strong tidal currents and tidal bores. The extensive mudflats exposed at low tide are unstable and dangerous.

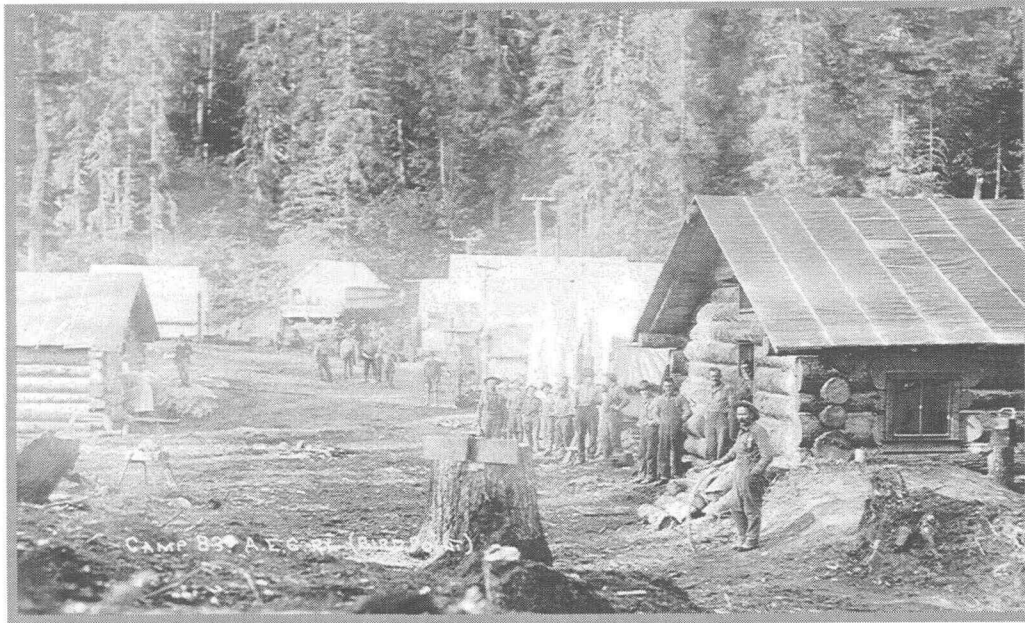
This subunit is used heavily for recreation by windsurfers and kayakers, and is within the viewshed of one of the most scenic and travelled roads in the state—the Seward Highway. Motorists travelling along the Seward Highway stop frequently to view wildlife, including beluga and killer whales in the waters of Turnagain Arm.

There are no known major mineral occurrences in the tideland areas, or within any of the isolated parcels within this management unit. Oil & gas potential for this area is low.

The Seward Highway/Turnagain Arm scenic corridor has been recognized by the U.S. Forest Service and identified as an Area Meriting Special Attention by the Anchorage Coastal Management Plan.

#### Subunit 1b

Subunit 1b includes six small parcels of state land: one along McHugh Creek, four near Rainbow, and one near Bird. The McHugh Creek and Bird parcels are currently being managed by the Division of Parks and Outdoor Recreation (DPOR) under an interagency land management agreement. Three of the parcels near Rainbow were conveyed to the state with the intent that they be added to Chugach State park. The fourth Rainbow parcel was omitted from the state park because of a technical error in the park's legal description.



Courtesy Anchorage Museum of History & Art

Railroad construction camp at Milepost 83, Bird Point, 1917

---

## MANAGEMENT INTENT

### Subunit 1a

Tidelands and submerged lands within this subunit will be retained in public ownership and managed for multiple use. The management emphasis for this subunit is to:

- 1) protect the high scenic values of the Turnagain Arm/Seward Highway scenic corridor;
- 2) continue offering high quality recreational opportunities;
- 3) maintain and enhance wildlife habitat.

Subunit 1a will remain open to mineral entry. It is anticipated that there will be a need to use tidelands within this management unit for highway and railroad expansion purposes. This plan does not preclude the use of tidelands in this management unit for transportation related uses.

### Subunit 1b

Subunit 1b is recommended for addition to Chugach State Park (please see **Areas Recommended for Addition to Chugach State Park** in Chapter 4). In the interim, these parcels will continue to be managed by DPOR, and will be closed to mineral entry.

## LAND USE SUMMARY CHART

---

### Management Unit 1: West Turnagain Arm

Subunit	Surface Land Use Designation	Subsurface	Prohibited Surface Use	Comments
<p style="text-align: center;"><b>1a</b> Tidelands 15,000 acres</p>	<p style="text-align: center;">Public recreation, Wildlife habitat</p>	<p style="text-align: center;">Open</p>	<p style="text-align: center;">Land disposals**</p>	
<p style="text-align: center;"><b>1b</b> Six isolated parcels 433 acres</p>	<p style="text-align: center;">Public recreation</p>	<p style="text-align: center;">Closed</p>	<p style="text-align: center;">Land disposals**</p>	<p style="text-align: center;">Recommended for addition to Chugach State Park</p>

\*\*Land disposals are disposals of state land to private ownership as authorized by AS 38.05.057 (disposal of land by lottery), AS 38.08 (homesites), and AS 38.09 (homesteads). For the purposes of this plan, land disposals do not include leasing, and do not preclude transfer of state land to another agency or municipality.