

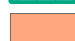

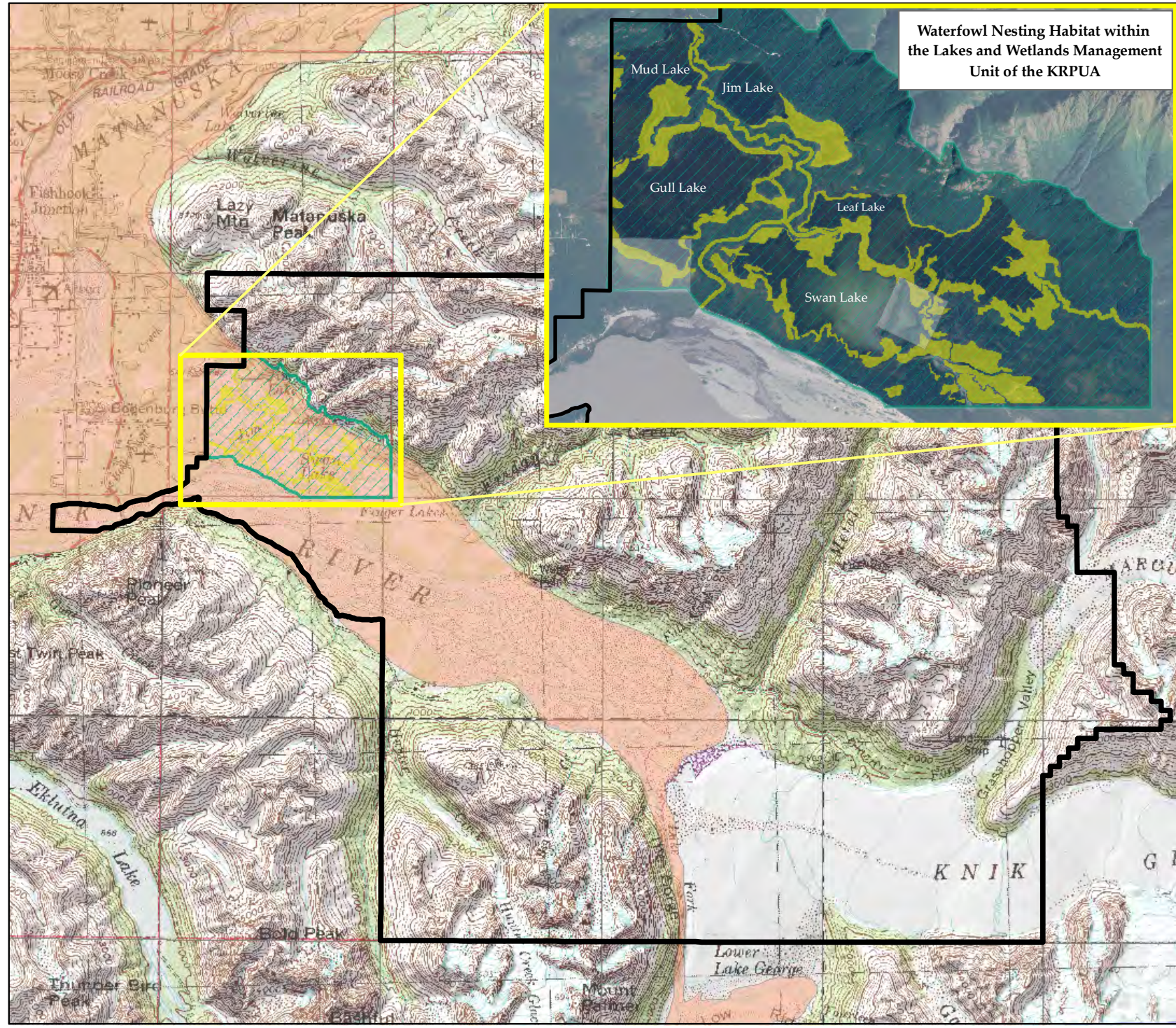


# Knik River Public Use Area

(AS 41.23.180 - 41.23.230)

## Waterfowl Habitat

-  KRPUA Legal Boundary
-  Lakes and Wetlands Unit
-  General Waterfowl Habitat
-  Waterfowl Nesting Habitat



This map is for graphic representation only and is intended to be used only as a guide. Habitat information derived from ADF&G data.

Coordinate System: NAD\_1983\_UTM\_Zone\_6N

