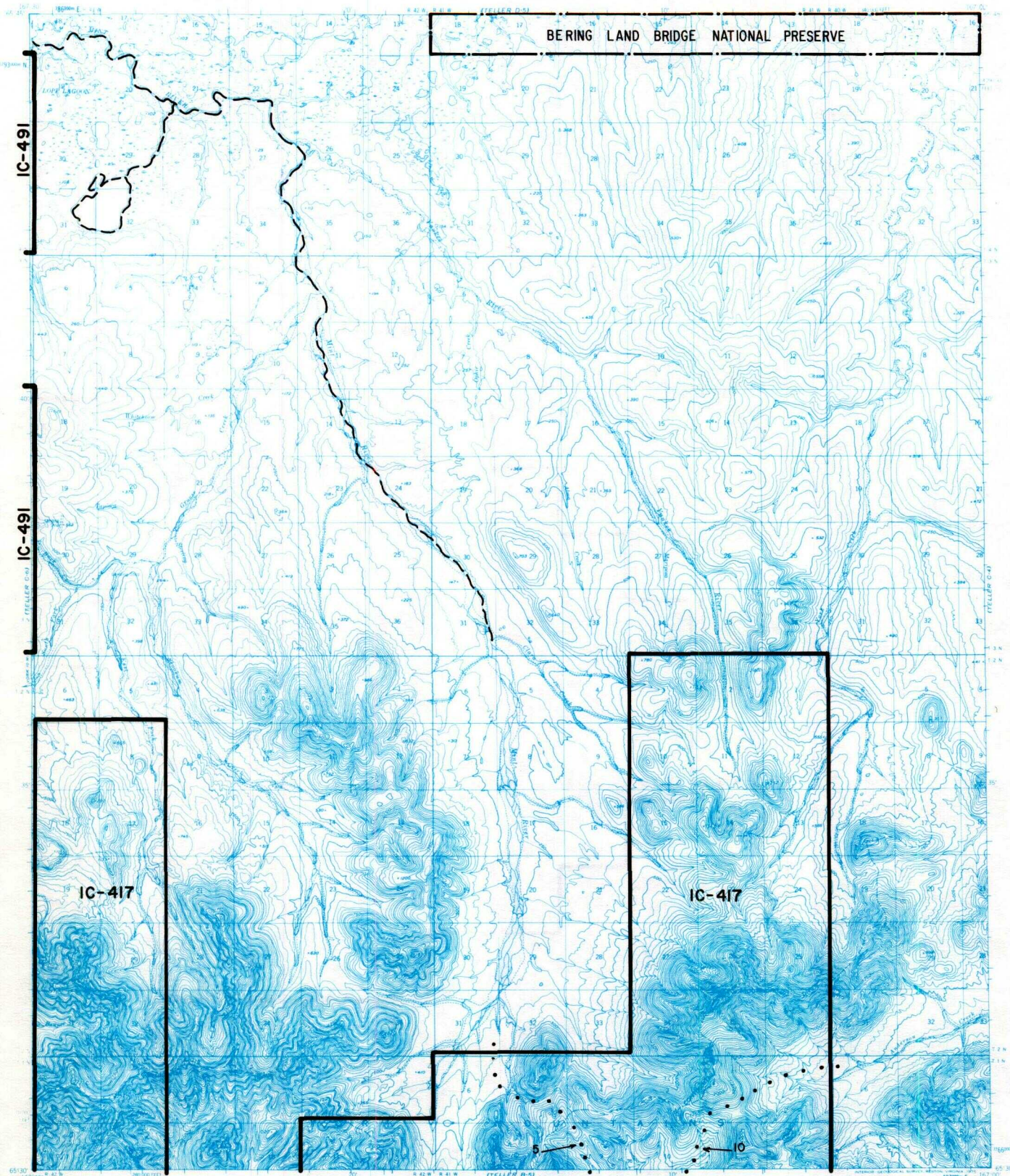


TELLER C-5



IC OR PATENT BDY.	FED. DETERMINED NAVIGABLE	NATIONAL PRESERVE LAND BDY.	
WATER EXCLUSION BDY.	STATE DETERMINED NAVIGABLE	EASEMENTS & ACCESS ROUTES	Scale in Miles

May 1989

RESERVED EASEMENTS

- EIN 5** An easement for an access trail, fifty (50) feet in width, from Esch Creek in Section 22, T. 1 N., R. 41 W., K.R.M., northwesterly to public land.
- EIN 10** An easement for an access trail, fifty (50) feet in width, from Lost River in Section 16, T. 1 N., R. 41 W., K.R.M., northeasterly to public land.