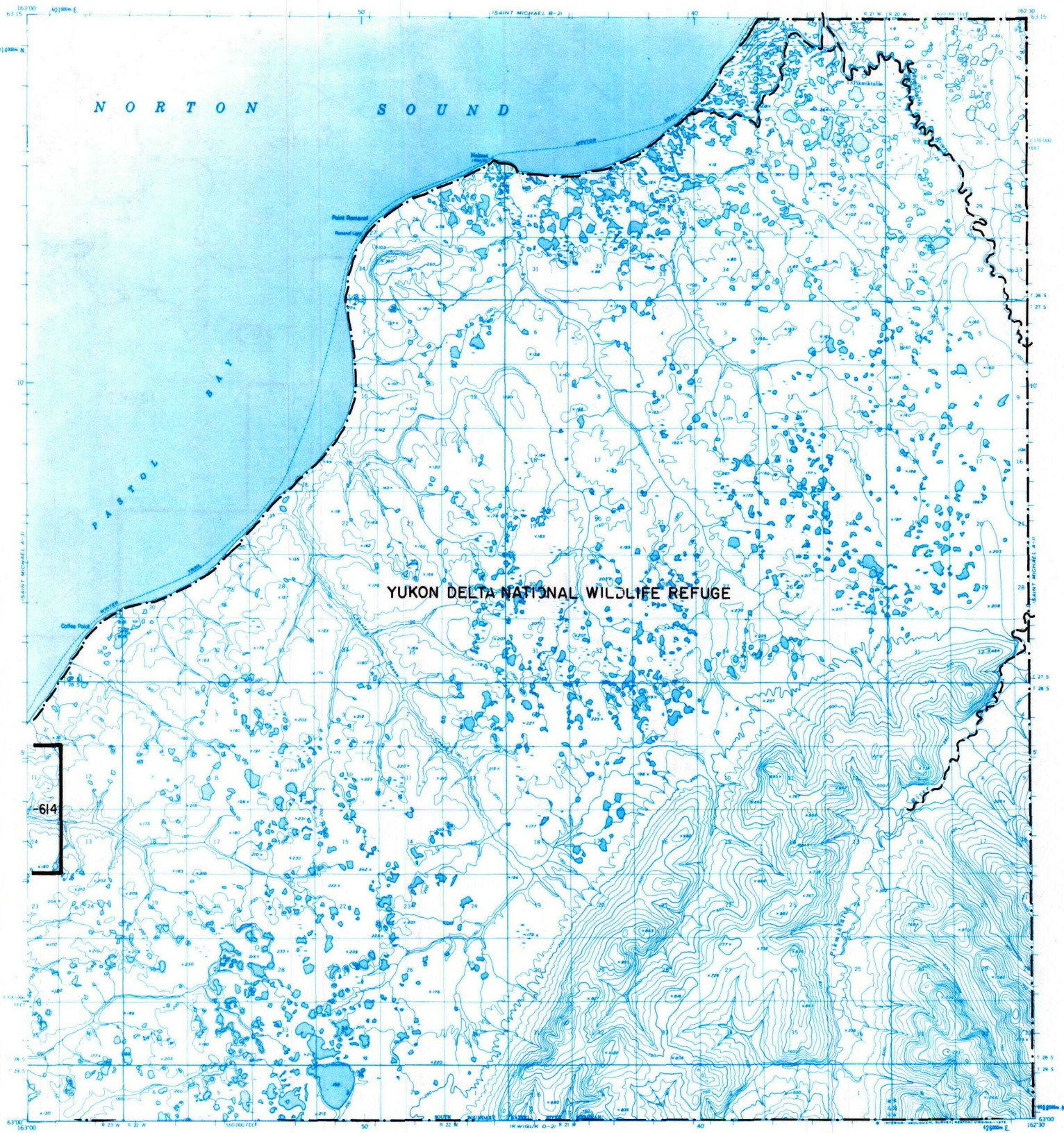
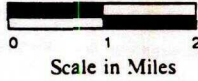


ST. MICHAEL A-2



614

- IC OR PATENT BDY.** **N** **FED. DETERMINED NAVIGABLE** **NATIONAL PRESERVE LAND BDY.**
- WATER EXCLUSION BDY.** **STATE DETERMINED NAVIGABLE** **EASEMENTS & ACCESS ROUTES**



May 1989

RESERVED EASEMENTS

No easements reserved.