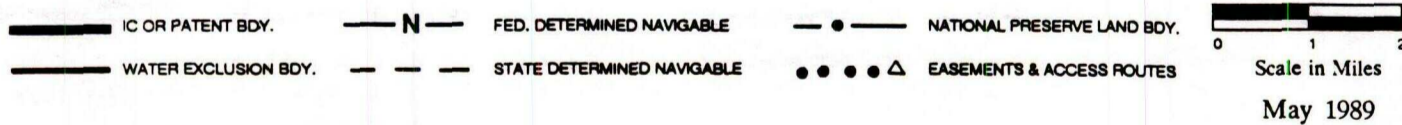
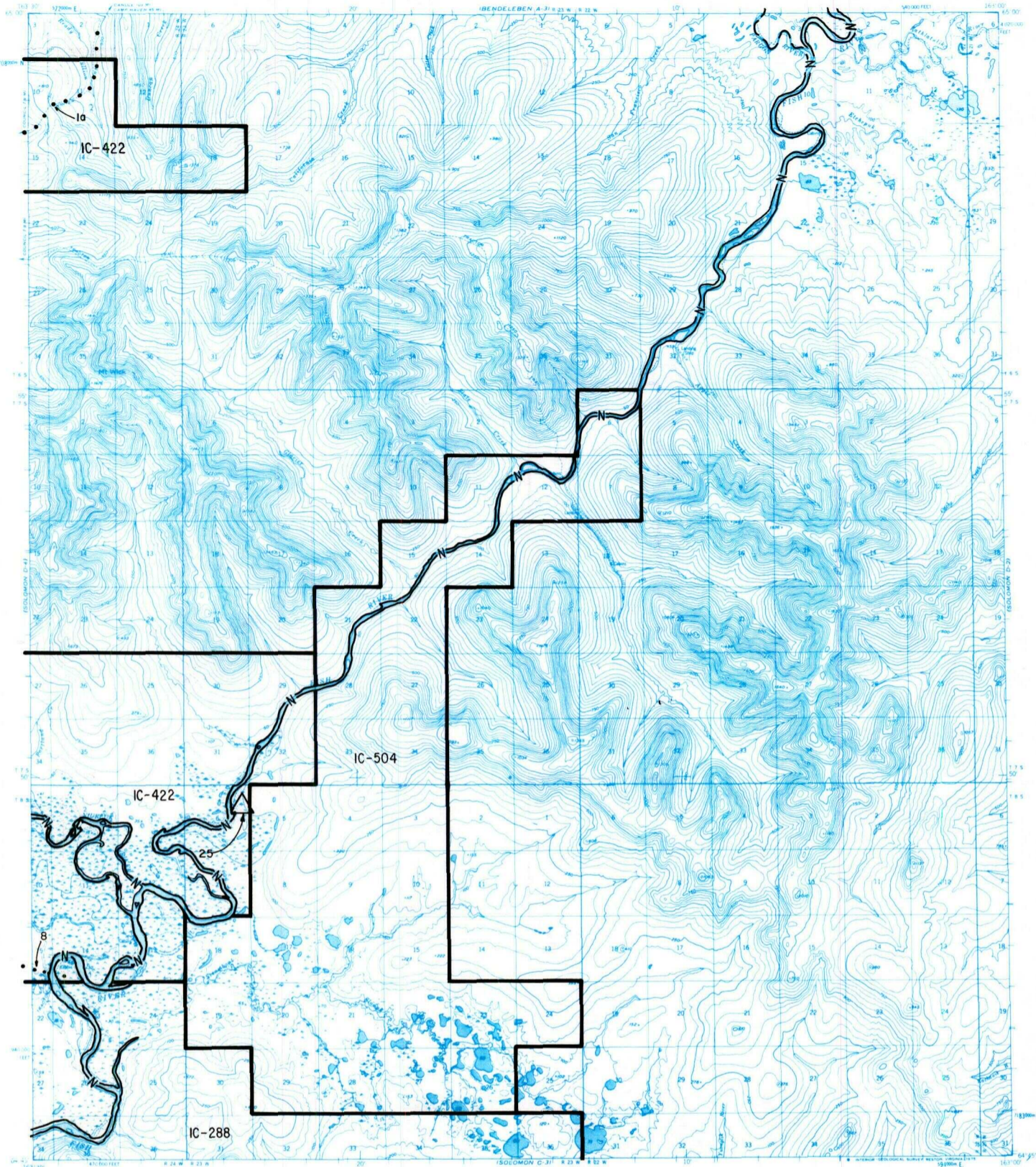


SOLOMON D-3



RESERVED EASEMENTS

- EIN 1a** An easement for an access trail fifty (50) feet in width from the ordinary high water mark on the left bank (looking downstream) of the Niukluk River at Council northeasterly to public land.
- EIN 8** An easement for an access trail twenty-five (25) feet in width from Council southeasterly to Golovin. The season of use is limited to winter.
- EIN 25** A one (1) acre site easement upland of the ordinary high-water mark in Section 6, T. 8 S., R. 23 W., K.R.M., on the left bank looking downstream) of the Fish River.