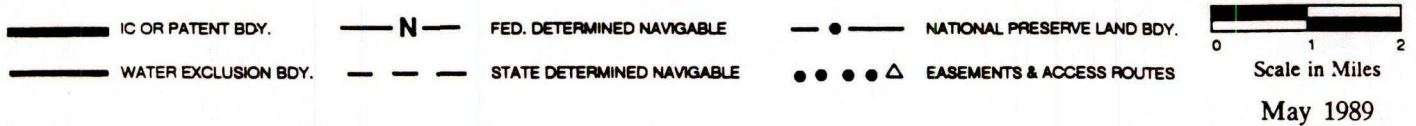
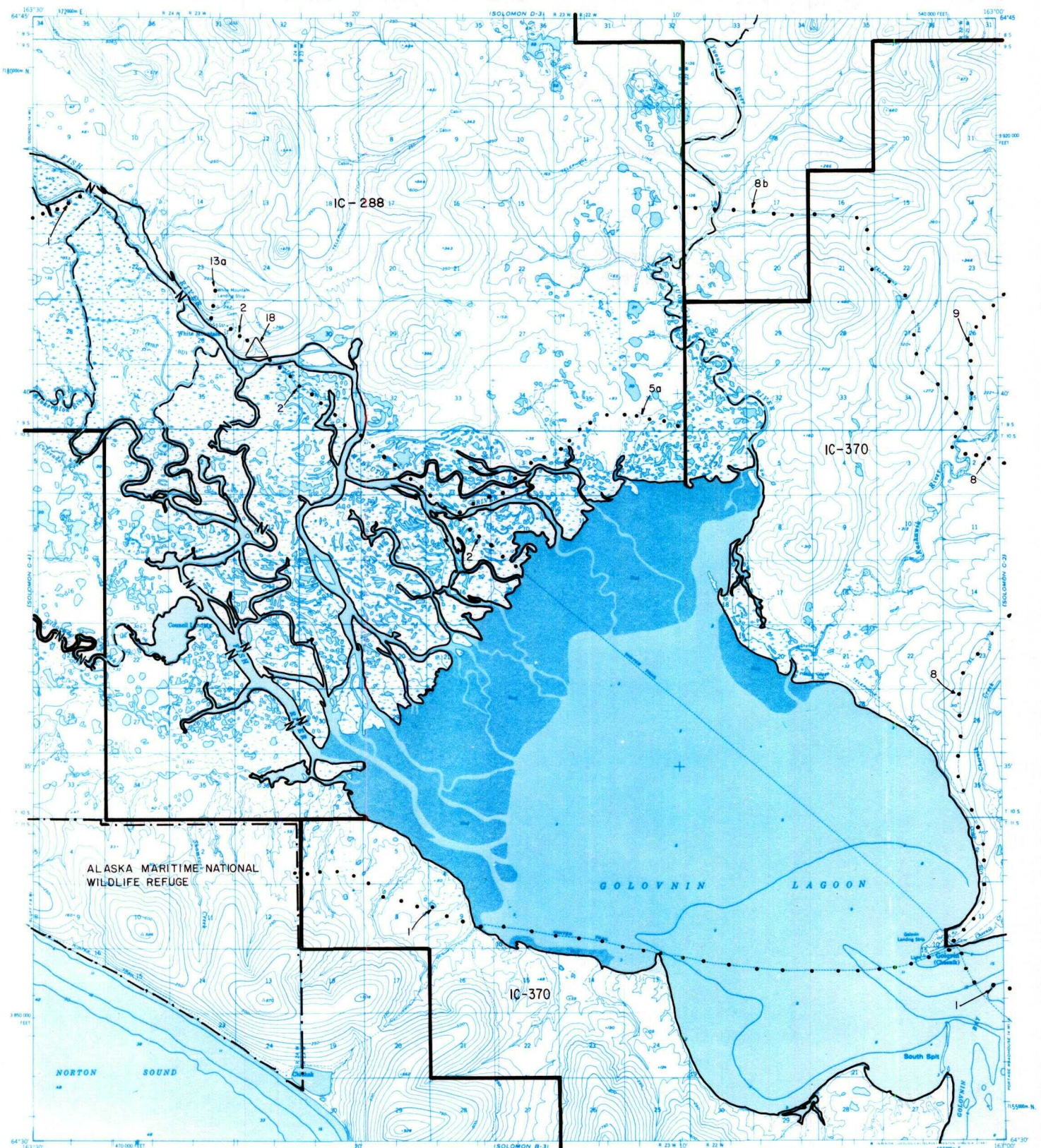


SOLOMON C-3



RESERVED EASEMENTS

- EIN 1** (IC-288) An easement for an access trail twenty-five (25) feet in width from the right bank (looking down stream) of the Fish River in Section 16, T. 9 S., R. 24 W., K.R.M., westerly to public lands in Section 2, T. 10 S., R. 26 W., K.R.M. The season of use is limited to winter.
- EIN 1** (IC-370) An easement for an access trail twenty-five (25) feet in width from the eastern border of Section 23, T. 11 S., R. 21 W., K.R.M., westerly across Golovin Sound, through the village of Golovin and across Golovin Lagoon to the western boundary of Section 1, T. 11 S., R. 24 W., K.R.M. The season of use is limited to winter.
- EIN 2** An easement for an access trail twenty-five (25) feet in width from Section 15, T. 10 S., R. 23 W., K.R.M., northwesterly to White Mountain in Section 26, T. 9 S., R. 24 W., K.R.M. The season of use is limited to winter.
- EIN 5a** An easement for an access trail twenty-five (25) feet in width from trail EIN 2 in Section 9, T. 10 S., R. 23 W., K.R.M., northeasterly to connect with Golovin trail EIN 8a in Section 6, T. 10 S., R. 22 W., K.R.M. The season of use is limited to winter.

- EIN 8** An easement for an access trail fifty (50) feet in width from the village of Golovin northerly to trail EIN 9 in Section 35, T. 9 S., R. 22 W., K.R.M.
- EIN 8b** An easement for an access trail twenty-five (25) feet in width from the junction of trail EIN 8 and trail EIN 9 in Section 35, T. 9 S., R. 22 W., K.R.M. at the Kachauik River, northwesterly to public land.
- EIN 9** An easement for an access trail fifty (50) feet in width from trail EIN 8 in Section 35, T. 9 S., R. 22 W., K.R.M. at the Kachauik River, northeasterly to public land.
- EIN 13a** An easement sixty (60) feet in width for a road from the White Mountain airstrip in Sections 23 and 26, T. 9 S., R. 24 W., K.R.M., southerly to the village of White Mountain.
- EIN 18** A one (1) acre site easement upland or the mean high tide line in Section 25, T. 9 S., R. 24 W., K.R.M., on the left bank (looking downstream) of the Fish River.