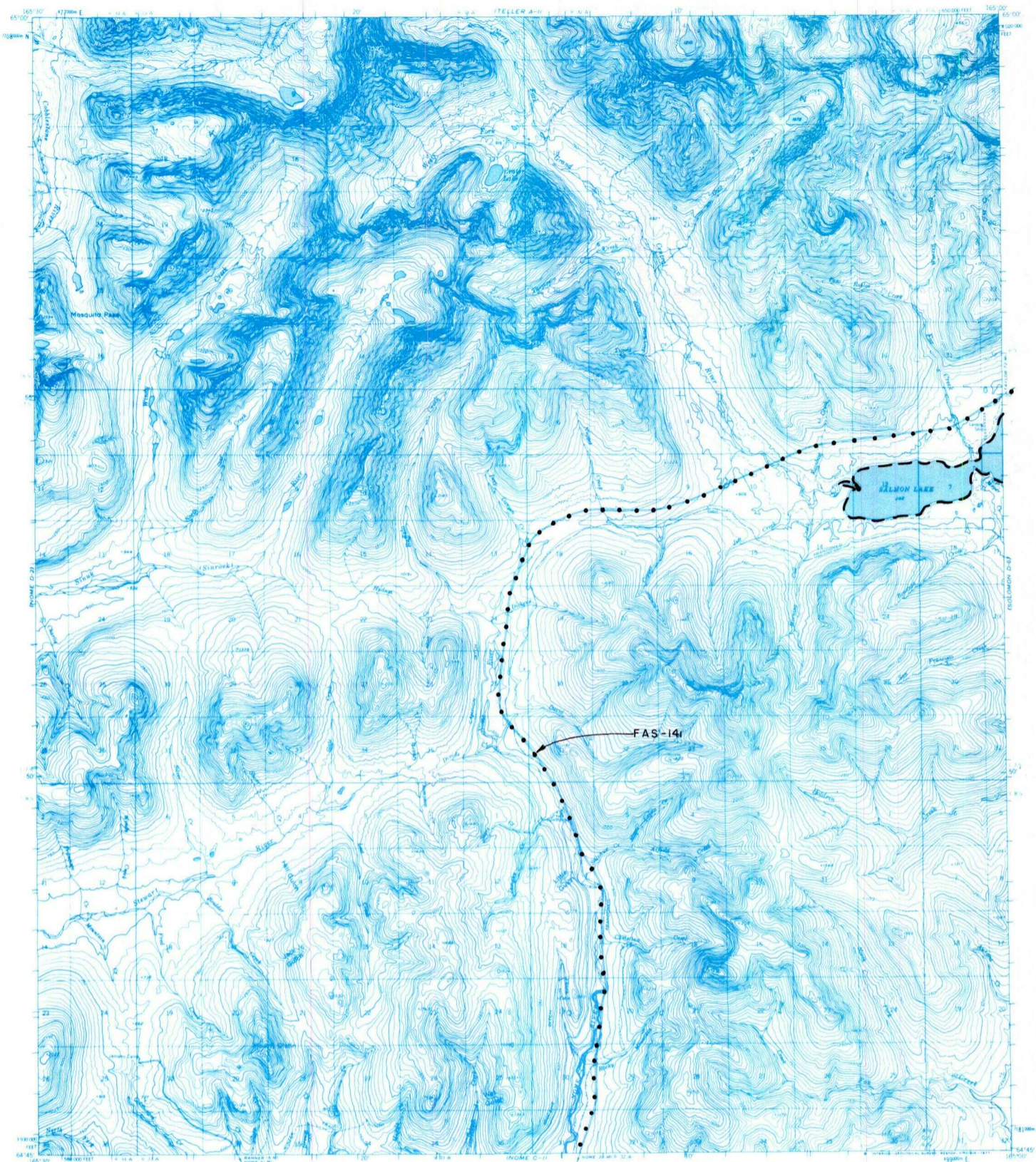


# NOME D-1



- IC OR PATENT BDY.
  **N** FED. DETERMINED NAVIGABLE
  NATIONAL PRESERVE LAND BDY.
- WATER EXCLUSION BDY.
  STATE DETERMINED NAVIGABLE
  EASEMENTS & ACCESS ROUTES



Scale in Miles

May 1989

## RESERVED EASEMENTS

**FAS 141** Omnibus Road Easement extending 100 feet on each side of the centerline of the Nome-Taylor Road from FAS Route 130 in Nome, north to FAS Route 1451 at Coffee Creek.