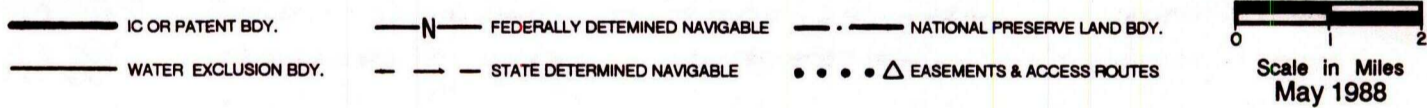
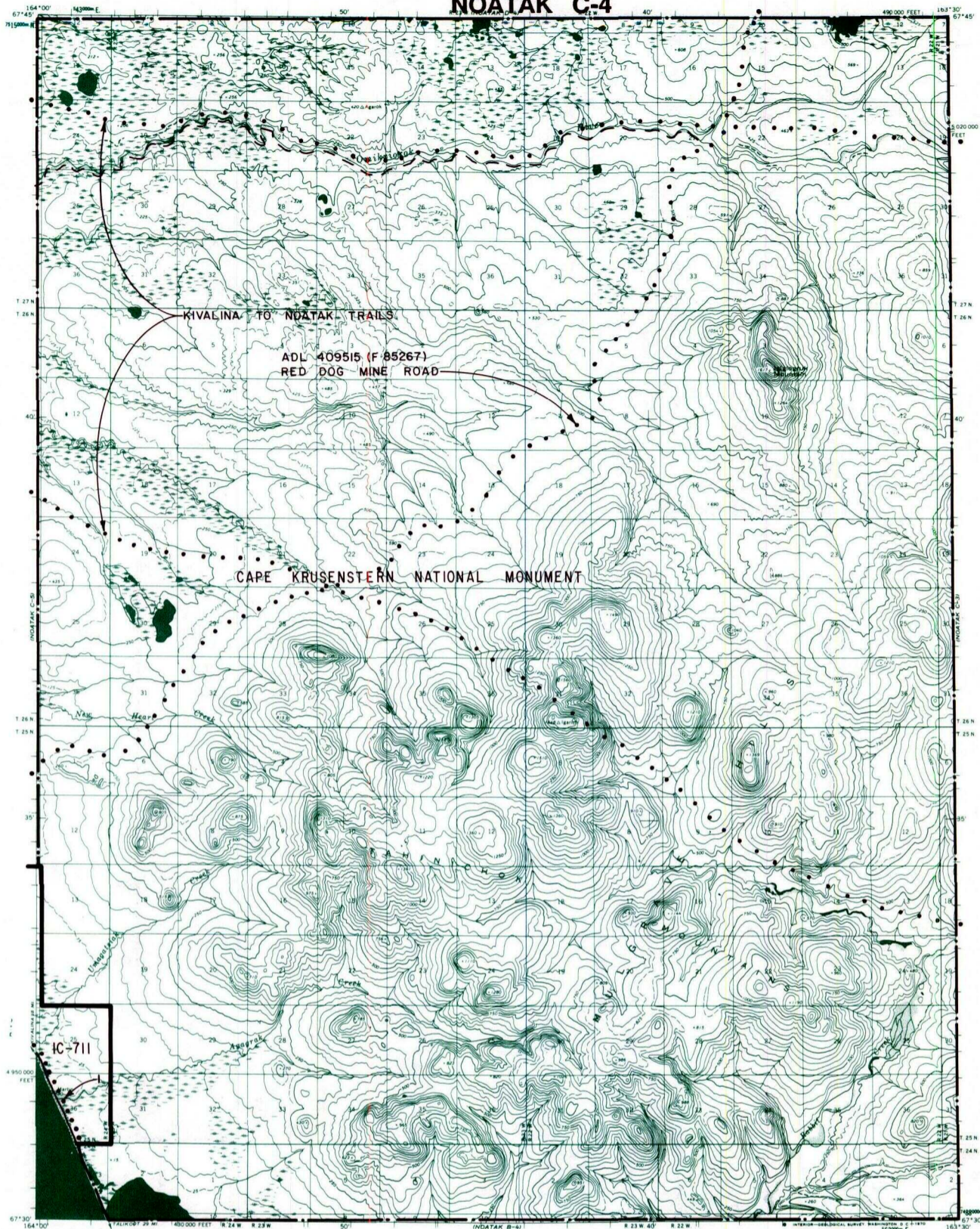


NOATAK C-4



RESERVED EASEMENTS

- EIN 1** An easement for an access trail twenty-five (25) feet in width from Section 36, T. 25 N., R. 24 W., K.R.M., northwesterly to Section 32, T. 29 N., R. 27 W., K.R.M. The season of use is limited to winter only.
- ADL 409515 (F 85267)** Public right-of-way for transportation corridor and 250 foot wide access roads to material sites; right-of-way is 600 feet in width from the Chukchi Sea, T. 25 N., R. 24 W., K.R.M. northeasterly to the Red Dog Mine.

National Park Service Kivalina to Noatak trails.