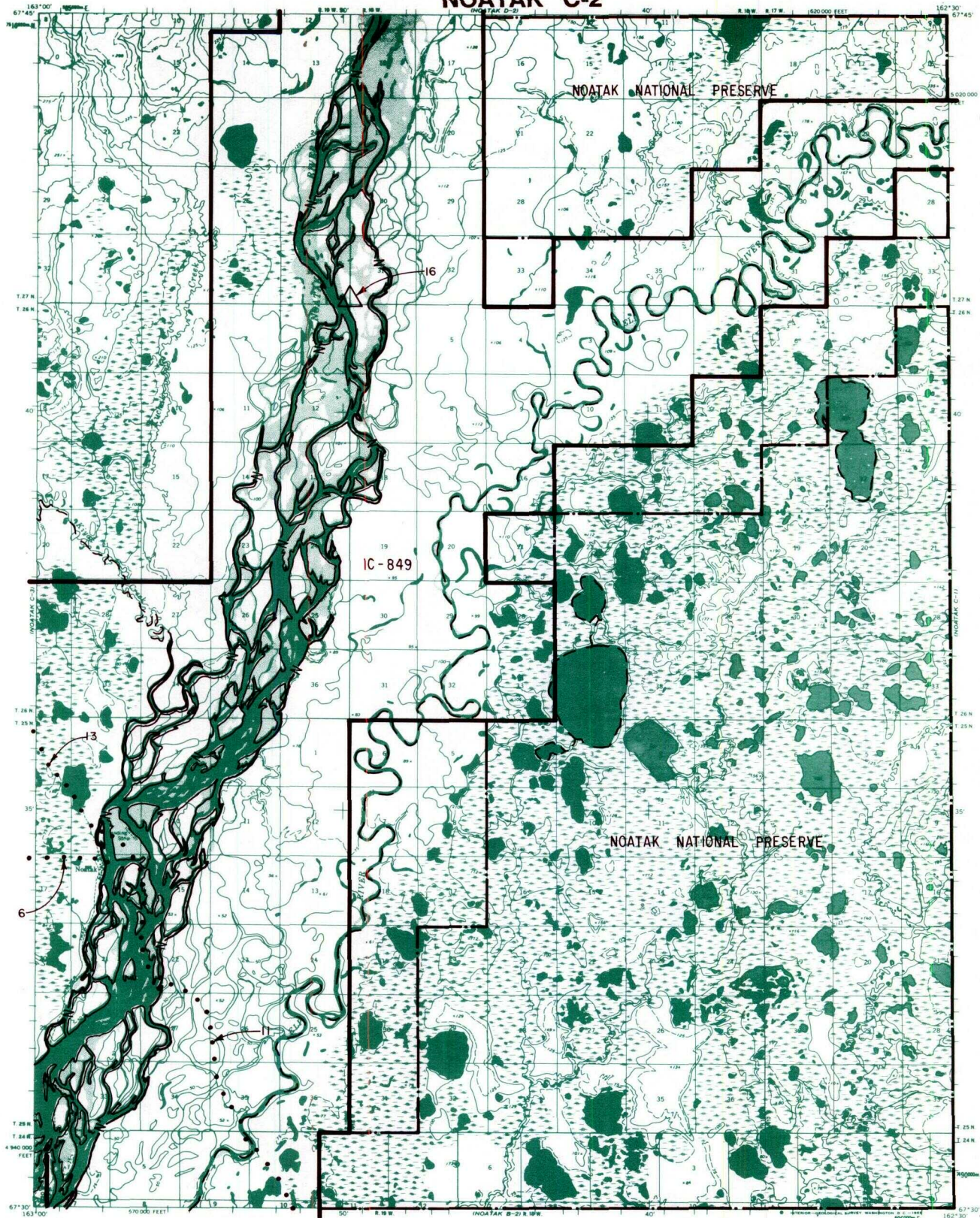


## NOATAK C-2



IC OR PATENT BDY.     
 N FEDERALLY DETERMINED NAVIGABLE     
  NATIONAL PRESERVE LAND BDY.

WATER EXCLUSION BDY.     
  STATE DETERMINED NAVIGABLE     
  EASEMENTS & ACCESS ROUTES



### RESERVED EASEMENTS

- EIN 6**      An easement for an access trail, twenty-five (25) feet in width, from Noatak in Sections 9 and 16, T. 25 N., R. 19 W., K.R.M., westerly to public land.
- EIN 11**      An easement twenty-five (25) feet in width for an access trail beginning at trail EIN 13 on the right bank (looking downstream) of the Noatak River in Section 9, T. 25 N., R. 19 W., K.R.M., southeasterly to public land. The season of use is limited to winter.
- EIN 13**      An easement for an access trail, twenty-five (25) feet in width, beginning in Section 9, T. 25 N., R. 19 W., K.R.M., northwesterly to public land. The season of use is limited to winter.
- EIN 16**      A one (1) acre site easement upland of the ordinary high water mark on the left bank (looking downstream) of the Noatak River in Section 36, T. 27 N., R. 19 W., K.R.M.