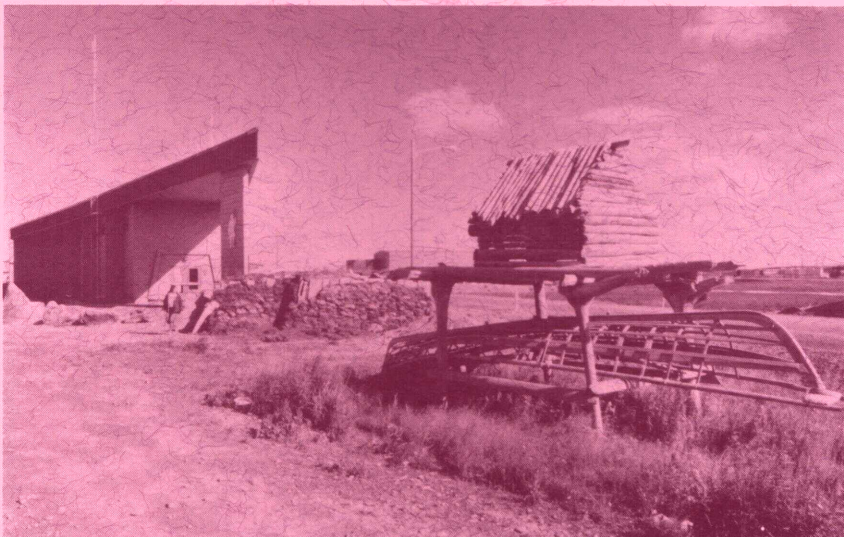


---

# NORTHWEST EASEMENT ATLAS

## KOTZEBUE AREA



MAY 1988



Alaska Department of  
**NATURAL  
RESOURCES**

---



**NORTHWEST EASEMENT ATLAS**

**KOTZEBUE AREA**

**State of Alaska**

**Department of Natural Resources**

**Division of Land & Water Management**

**Anchorage, Alaska**

**May 1988**

## INTRODUCTION

---

Over the last two decades Alaska has experienced tremendous changes in land ownership and management. Many areas previously available for public use, may today be restricted or eliminated due to inclusion in a federal conservation unit, state legislatively designated unit, and often areas may no longer be available for public use because of conveyance to a Native corporation or other private parties.

This atlas has been designed to aid both the public user and the land owner or manager in dealing with a growing problem in Alaska, unauthorized use of land and resources. This use, for the most part, has been inadvertent because of a lack of easily understood and readily available current land status information. This atlas has been designed to provide this information by graphically portraying current land ownership as of date of publication and public access site locations, including identifications of any restrictions.

This atlas is not a legal document. It is a representation of official state and federal land records. Generally, information is shown to a section (one square mile) level. For accurate information refer to the official records in the public information offices of the state's Department of Natural Resources (DNR) and the federal Bureau of Land Management (BLM).

Private land is not open to public use or travel without prior permission from the landowner. Use or travel across private land or the unauthorized use of public easements may result in criminal trespass. If you have any questions concerning public use of an area, you are encouraged to contact the appropriate land owner or manager. A list of the names, addresses and phone numbers of corporate land owners is included within the atlas. Privately owned land may be located on detailed land status maps that are available at BLM and State DNR public offices. It is *your* responsibility to know what land and use restrictions apply and to obtain permission and any necessary permits in advance from the land owner.

Invasion of community and camp privacy is a concern of many rural residents. Therefore, please be sensitive to local concerns and customs. Do not take pictures of residents without permission or otherwise encroach on local use areas.

Trapping cabins, fishing and hunting camps and tent camps are essential to the livelihood of many rural residents. They should not be used by the public except in case of real emergency. Although they may appear abandoned, the owners will return and will need everything they left for the coming season. Early trappers and travelers established an honorable tradition of respecting cabins and campsites, a tradition that should be continued today.

## HOW TO USE THIS ATLAS

---

The maps in this atlas show where land has been conveyed to Native corporations and where land is within a federal conservation unit. Land conveyances of less than 160 acres are not mapped. The maps do not identify other federal public domain land managed by the Bureau of Land Management (BLM), state land, or private land. If the land status is not labeled on a map it is in one of these other land categories and if it is not private land it is generally public land available for general public use without a permit. Further information can be obtained by contacting an office of either BLM or the state Department of Natural Resources (DNR).

This atlas also does not show parcels of private property, such as Native allotments, homesteads, trade and manufacturing sites, etc. You should be aware that they may exist in any area. Detailed land status maps which identify all private land is available at BLM and DNR land record offices.

Waterbodies marked as federally determined navigable on the maps are available for public use up to the line of ordinary high water (usually the vegetation line). Tideland areas are also available for public use up to the line of mean high tide. State law also provides that you can use any waterbody in the state for free passage without obstruction. This does not, however, give you the authority to use the adjoining private land without permission. State determined navigable waters are so identified for a later review of their navigable status.

Public access routes and easements are also shown on each map along with a written description of their location, season of use and use restrictions, if any. Although most of these easements are not marked on the ground, it is your responsibility to confine your passage and activities only to those areas and specified allowable uses. Only 17(b) easements, 201(2) easements, Omnibus Roads, Federal Aid Highways, National Park Service Trails and Ranger Stations, and other rights-of-way are shown. R.S. 2477 rights-of-way will not be shown until determined valid by the courts or officially asserted by the state.

## Explanation of Terms

---

"Easement" is an interest in land which has been reserved for the public to use even though the land may be owned by a private individual or Native corporation. An easement may be for a variety of specified purposes, such as a road, trail, campsite, airport, etc. Easements may also be restricted (i.e., width, types of use, seasons of use, and duration of use). Easements cannot be used for any other uses than those granted or reserved. For example, a site easement, reserved under the authority of the Alaska Native Claims Settlement Act (ANCSA), may only be used for temporary 24 hour camping. You may not fish, hunt or otherwise recreate on the site, and you may not disturb the site in any way, such as cutting trees or firewood.

"Federally Determined Navigable" are those waterbodies that BLM has administratively determined to be navigable for land title purposes. Their definition has changed over time as the result of various court cases. However, today BLM considers water bodies navigable if the were, at the time of statehood, navigable for crafts larger than a one-person kayak.

An "IC" is an Interim Conveyance document issued to Native corporations under ANCSA which passes title to land from the federal government to a corporation.

"Mean High Tide" is the line that separates uplands from tidelands. It is established by taking the mean or average of all high tides over a 18 year period.

"Navigable Waters" are those waterbodies that have been found or are capable of transporting people or goods and, as such, the land beneath them is owned by the state. These waterbodies extend up to the line of ordinary high water (usually the vegetation line). The adjacent uplands may be in private ownership, and not available for use without permission.

"Ordinary High Water Mark" is defined as the mark along the bank or shore where the presence and action of water are so common and usual, and so long continues in all ordinary years, as to leave a natural line impressed on the bank or shore. that line may be indicated by erosion, shelving, changes in soil characteristics, destruction of terrestrial vegetation, or other distinctive physical characteristics.

"Public Waters" are those waterbodies that are not navigable. Public waters may be used, without obstruction of interference, but the land beneath them and adjacent to them may be in private ownership, thus not available for use without permission.

"R means Range" which is a row or tier of townships lying east or west of and parallel with a principal meridian and north or south of a base line are designated as ranges. They are read "Range one or two east or west, etc.," as the case may be.

"SE" means surface estate only was conveyed.

"SSE" means subsurface estate only was conveyed.

"State Determined Navigable" are those additional waterbodies that the state has determined navigable. This usually occurs where BLM has not yet made a determination or, because of an earlier determination, the state disagreed with the criteria they used. The state today uses the same definition as BLM for rivers and streams.

"T means Township" which is a tract of land contained by running the meridians and parallels six miles apart, whose sides run north and south and east and west, and is approximately square and contains thirty-six square miles or 23,040 acres. The townships situated east and west of each other are designated as townships, in describing lands, and are numbered from the base line north or south on the principal meridian. They are read "Township one or two, etc., north or south," as the case may be.

<u>PATENT</u>	<u>IC CORPORATION</u>	<u>USGS QUADS</u>
4	Kikiktugruk Inupiat Corporation	Kotzebue C1 D1
6	Kikiktugruk Inupiat Corporation	Kotzebue B4
10	NANA Regional Corporation	Selawik D5 D6
24	Kikiktugruk Inupiat Corporation	Kotzebue D2
47	Arctic Slope Regional Corporation	De Long Mts. C4 C1 C5 D1 D2 D3 D4 D5
47	Arctic Slope Regional Corporation	Pt Hope D1 A1 A2 B1 B2 B3 C1 C2 C3 D1
47	Arctic Slope Regional Corporation	Wainwright A5 A6
47	Arctic Slope Regional Corporation	Pt Lay A2 A3 A4 B1 B3 C1 C2 D1 D2
47	Arctic Slope Regional Corporation	Utukok River B5 C5 D5
50	Tigara Corporation	Pt. Hope A1 A2 B1 B2 B3 C2 C3
58	Cully Corporation Inc.	Pt. Lay C1 C2
62	Kikiktugruk Inupiat Corporation	Kotzebue D2
435	NANA Regional Corporation	Selawik C5 D5 D6
436	NANA Regional Corporation	Selawik C4 C5 C6 D4
461	NANA Regional Corporation	Ambler River 250 A3 A4
463	NANA Regional Corporation	Ambler River A4
499	NANA Regional Corporation	Selawik C5 D5
500	NANA Regional Corporation	Selawik C4 C5 C6 D6
544	Kikiktagruk Inupiat Corporation	Selawik C6 D6
544	Kikiktagruk Inupiat Corporation	Noatak A2 A3 B2
544	Kikiktagruk Inupiat Corporation	Kotzebue C1 D1 D2 D3
551	NANA Regional Corporation	Selawik C3
552	NANA Regional Corporation	Selawik B2 B3 C2 C3 D3
580	NANA Regional Corporation	Kotzebue D1 D2
580	NANA Regional Corporation	Noatak A2
643	NANA Regional Corporation	Noatak D2
643	NANA Regional Corporation	De Long Mts A2
711	NANA Regional Corporation	Noatak C4 C5 D4 D5 D6
713	NANA Regional Corporation	Selawik A4 A5
713	NANA Regional Corporation	Selawik A5
721	NANA Regional Corporation	Selawik A5
721	NANA Regional Corporation	Candle D4 D5
725	NANA Regional Corporation	Baird Mts A3 A4
726	NANA Regional Corporation	Baird Mts A2 A3 A4
726	NANA Regional Corporation	Selawik D2 D3 D4
730	NANA Regional Corporation	Bendelben D1
731	NANA Regional Corporation	Bendeleben D1
732	NANA Regional Corporation	Kotzebue A2
732	NANA Regional Corporation	Bendeleben D2
735	NANA Regional Corporation	Bendeleben D1 D2 D3
735	NANA Regional Corporation	Kotzebue A2
735	NANA Regional Corporation	Kotzebue A1 A2
759	Kikiktagruk Inupiat Corporation	Kotzebue D2
829	NANA Regional Corporation	Baird Mts A3
829	NANA Regional Corporation	Selawik D3
849	NANA Regional Corporation	Noatak B2 B3 C1 C2 C3 D2
904	NANA Regional Corporation	Ambler River A3 A4
904	NANA Regional Corporation	Shungnak D2 D3 D4
994	NANA Regional Corporation	Shungnak D2
994	NANA Regional Corporation	Ambler River A2
995	NANA Regional Corporation	Ambler River A1 A2
995	NANA Regional Corporation	Shungnak D2
1082	NANA Regional Corporation	Kotzebue A1 A2
1082	NANA Regional Corporation	Kotzebue A2
*1118	Kikiktagruk Inupiat Corporation	Noatak A1
1184	NANA Regional Corporation	Selawik C3
1205	NANA Regional Corporation	Selawik D3
*1312	NANA Regional Corporation	Noatak C2
*1359	Kikiktagruk Inupiat Corporation	Kotzebue C1
*1364	Kikiktagruk Inupiat Corporation	Kotzebue D2

**PATENT IC CORPORATION**

**USGS QUADS**

82 50 0029	NANA Regional Corporation	Ambler River A4
50 82 0133	Kikiktagruk Inupiat Corporation	Kotzebue D2
50 82 0141	NANA Regional Corporation	Selawik C2
50 83 0063	Kikiktagruk Inupiat Corporation	Kotzebue D2
50 83 0286	NANA Regional Corporation	Noatak C5
*50 83 0288	NANA Regional Corporation	Candle D5
50 83 0294	NANA Regional Corporation	Selawik D3 D4
50 84 0515	NANA Regional Corporation	Noatak C2
50 84 0680	Tigara Corporation	Pt. Hope D2
50 85 0119	NANA Regional Corporation	Shungnak D2
50 85 0526	Olgoonik Corporation	Wainwright C2
*50 87 0130	Kikiktagruk Inupiat Corporation	Kotzebue D2
*50 87 0132	NANA Regional Corporation	Kotzebue D2

\* Land conveyances of less than 160 acres are not mapped

**CORPORATION/GOVERNMENT****LAND MANAGER/****ADDRESS****PHONE NUMBER**

---

Arctic Slope Regional Corporation P.O. Box 129 Barrow, AK 99723	William Thomas (907) 852-8633 (Barrow) (907) 248-3030 (Anchorage)
Cully Corporation, Inc. Pt. Lay, AK	Donald Neakok, President (907) 833-2212
Kikiktagruk Inupiat Corporation P.O. Box 279 Kotzebue, AK 99752	Willie Goodwin (907) 442-3165
NANA Regional Corporation, Inc. P.O. Box 49 Kotzebue, AK 99752	Walter Sampson (907) 442-3301
Olgoonik Corporation, Inc. Wainwright, AK 99782	Jerry Panik, President (907) 763-2615
Tigara Corporation Pt. Hope, AK 99766	Elijah Rock Sr., President (907) 368-9131
National Park Service Alaska Regional Office 2525 Gambell Anchorage, AK 99513	(907) 271-1365
National Park Service - Northwest Area P.O. Box 1029 Kotzebue, AK 99752	Alan Eliason, Superintendent (907) 442-3890
U.S. Bureau of Land Management Alaska State Office 701 C Street, Box 13 Anchorage, AK 99513	(907) 271-5960
U.S. Bureau of Land Management Arctic District Office 1541 Gaffney Road Fairbanks, AK 99703	Tom Dean (907) 356-5132
U.S. Bureau of Land Management Kobuk District Office 1541 Gaffney Road Fairbanks, AK 99703	Roger Bolstad (907) 356-5385
U.S. Fish & Wildlife Service Alaska Regional Office 1011 E. Tudor Road Anchorage, AK 99503	Robert Hiller (907) 786-3499
U.S. Fish & Wildlife Service Selawik National Wildlife Refuge P.O. Box 270 Kotzebue, AK 99752	Jerry Stroebele (907) 442-3799
Bering Land Bridge National Preserve P.O. Box 220 Nome, AK 99762	Larry Rose, Superintendent (907) 443-2522



**EASEMENT USE LIMITATIONS**  
(Reserved in ANCSA Conveyances)

**25 Foot Trail** - The uses allowed on a twenty-five (25) foot wide trail easement are: travel by foot, dogsled, animals, snowmobiles, two and three-wheel vehicles, and small all-terrain vehicles (less than 3,000 lbs Gross Vehicle Weight (GVW)).

**50 Foot Trail** - The uses allowed on a fifty (50) foot wide trail easement are: travel by foot, dogsled, animals, snowmobiles, two and three-wheel vehicles, small and large all-terrain vehicles, track vehicles, and four-wheel drive vehicles.

**60 Foot Road** - The uses allowed on a sixty (60) foot wide road easement are: travel by foot, dogsled, animals, snowmobiles, two and three-wheel vehicles, small and large all-terrain vehicles, track vehicles, four-wheel drive vehicles, automobiles, and trucks.

**100 Foot Proposed Road** - The uses allowed on a one hundred (100) foot wide road easement are: travel by foot, dogsled, animals, snowmobiles, two and three-wheel vehicles, small and large all-terrain vehicles, track vehicles, four-wheel drive vehicles, automobiles, and trucks. All roads in this category must be proposed for construction within a five-year period. If the road is not constructed the easement will be reduced to a trail and the uses will be consistent with the trail width. If after the road has been constructed a lesser width is sufficient to accommodate the road, the easement shall be reduced to a 60 foot wide easement.

**One Acre Site** - The uses allowed for a site easement are: vehicle parking (e.g., aircraft, boats, ATV's, snowmobiles, cars, trucks), temporary camping, and loading or unloading. Temporary camping, loading, or unloading shall be limited to 24 hours.

**Site Easement (Airstrip)** - The uses allowed for a site easement are: aircraft landing, vehicle parking (i.e., aircraft, boats, ATV's, snowmobiles, cars, trucks), temporary camping, and loading or unloading. Temporary camping, loading or unloading shall be limited to 24 hours.

**OTHER RESERVATIONS**

**Omnibus Roads** - Roads designated FAP or FAS are right-of-way interests that were conveyed to the State of Alaska by the quit claim deed dated June 3, 1959, executed under the authority of the Alaska Omnibus Act. They may not have been mentioned in the IC or an IC may have reserved an easement corresponding to the omnibus road. In either case the omnibus road rights are superior.

**Federal Aid Highways** - Roads designated A-XXXXXX (X stands for a number) are Federal Aid Highways under the Act of August 27, 1958. The designated number is a BLM right-of-way file number.