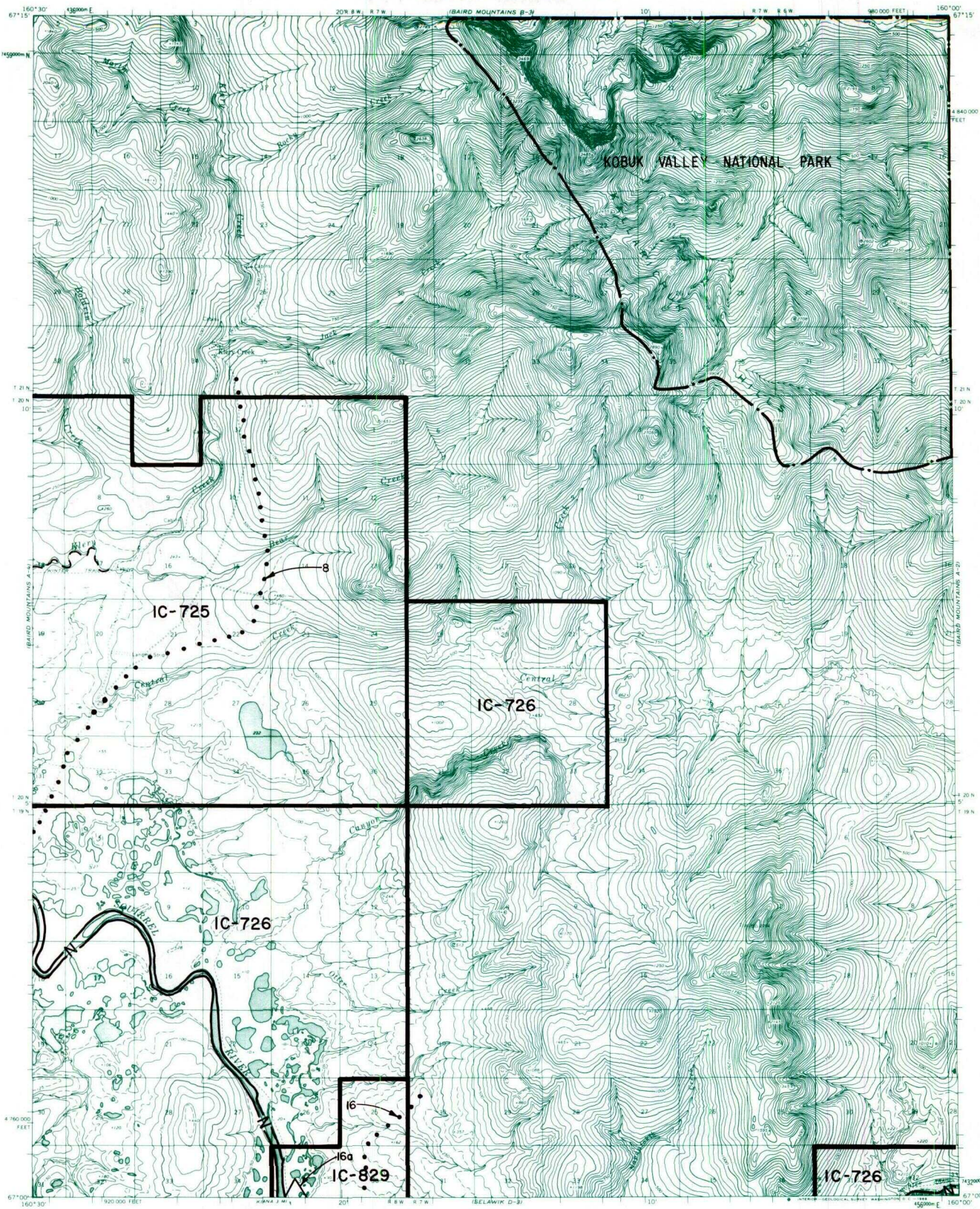


BAIRD MTS. A-3



IC OR PATENT BDY.	FEDERALLY DETERMINED NAVIGABLE	NATIONAL PRESERVE LAND BDY.
WATER EXCLUSION BDY.	STATE DETERMINED NAVIGABLE	EASEMENTS & ACCESS ROUTES

Scale in Miles

 May 1988

RESERVED EASEMENTS

- EIN 8** An easement fifty (50) feet in width for a trail from "Klery Creek Landing" located on the left bank (looking downstream) of the Squirrel River in Section 6, T. 19 N., R. 8 W., K.R.M., northeasterly to public land.
- EIN 16** An easement fifty (50) feet in width for an access trail from site EIN 16a C3, E. in Section 35, T. 19 N., R. 8 W., K.R.M., northeasterly to public land in T. 19 N., R. 7 W., K.R.M.
- EIN 16a** A one (1) acre site easement upland of the ordinary high water mark in Section 35, T. 19 N., R. 8 W., K.R.M., on the left bank (looking downstream) of the Squirrel River. The uses allowed are vehicle parking (e.g., boats, ATV's, snowmobiles), loading or unloading. Loading or unloading shall be limited to 24 hours.