

KODIAK C-6

◆ RESERVED EASEMENTS:

EIN 6

A proposed trail from the shore of Uyak Bay extending westerly along the north side of an unnamed creek to Salmon Creek Lake, then along the north shore of the lake, and then southwesterly. (25-foot trail)

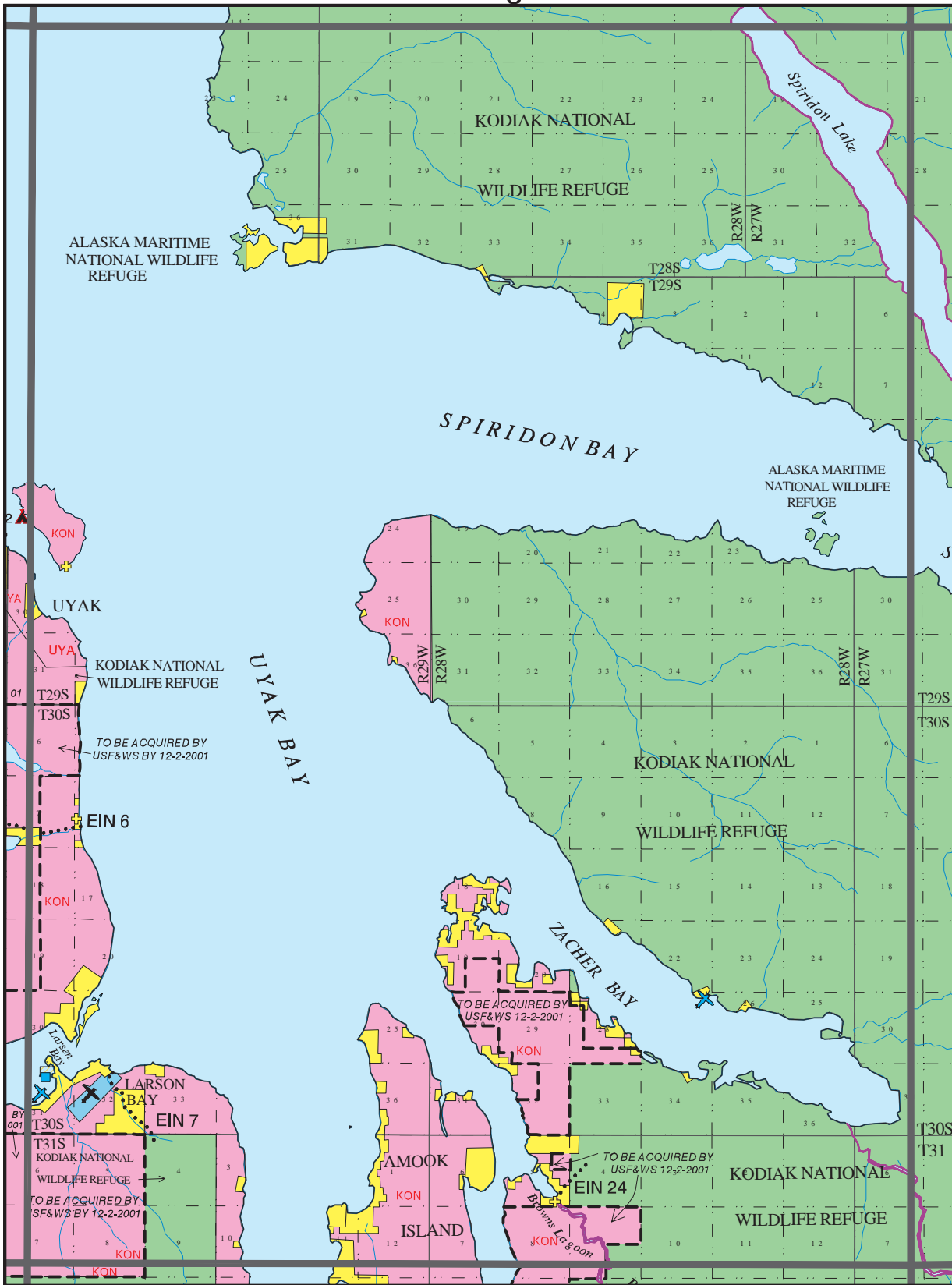
EIN 7

A proposed trail running southeasterly from the shore of Uyak Bay. (25-foot trail)

EIN 24

A proposed trail running northeasterly from the mouth of Brown's Lagoon. (25-foot trail)

USGS Quadrangle Kodiak C-6



- KODIAK PUBLIC ACCESS ATLAS LEGEND -

- | | | | | |
|--------------------------------------|---|----------------|----------------|------------------------------------|
| State | Mental Health | Highway | Campsite | Wheel Strip |
| Native | University | Roads | Public Cabin | Beach Strip |
| Native, public access by permit only | Private | Trails | Boat Launch | Floatplane |
| USF&WS | Private Tideland | Winter Trails | Dock | State Determined Navigable Water |
| Katmai Natl Park | Municipal Tideland | Atlas Boundary | Visitor Center | Federal Determined Navigable Water |
| Other Federal | Alaska State Park | USGS Quad | Picnic Site | |
| Military | Critical Habitat Area | | | |
| Municipal | Small Parcel- color indicates ownership | | | |

March, 1997