

## KODIAK B-3

---

### ◆ RESERVED EASEMENTS:

#### **ADL 225743a**

A public use area 50 feet in width along and upland of the shoreline.

#### **ADL 225746a**

A proposed trail 25 feet in width from the shore of Kiliuda Bay and site ADL 225746b northerly along the left bank of an unnamed clearwater stream.

#### **ADL 225746b**

A campsite one acre in size on Kiliuda Bay at or near the mouth of an unnamed clearwater stream. This site serves as trailhead for trail ADL 225746a.

#### **ADL 225833a**

A public use site one acre in size on the shore of the lagoon for off-loading and changing from boat to pedestrian transportation.

#### **ADL 225833b**

A proposed trail 50 feet in width running from the intertidal area of the lagoon northeasterly along the west side of an unnamed stream.

#### **ADL 225833c**

A public use area 25 feet in width along and upland of the shoreline of the lagoon.

#### **ADL 225833d**

*An airstrip 150 X 1,500 feet in size including the existing airstrip east of the lagoon.*

#### **ADL 225833e**

A proposed trail 25 feet in width from the airstrip to the public use site on the lagoon.

#### **EIN 5**

A proposed trail running northerly from the north shore of Shearwater Bay at site EIN 5a. (25-foot trail)

#### **EIN 5a**

A campsite on the north shore of Shearwater Bay. (one-acre site)

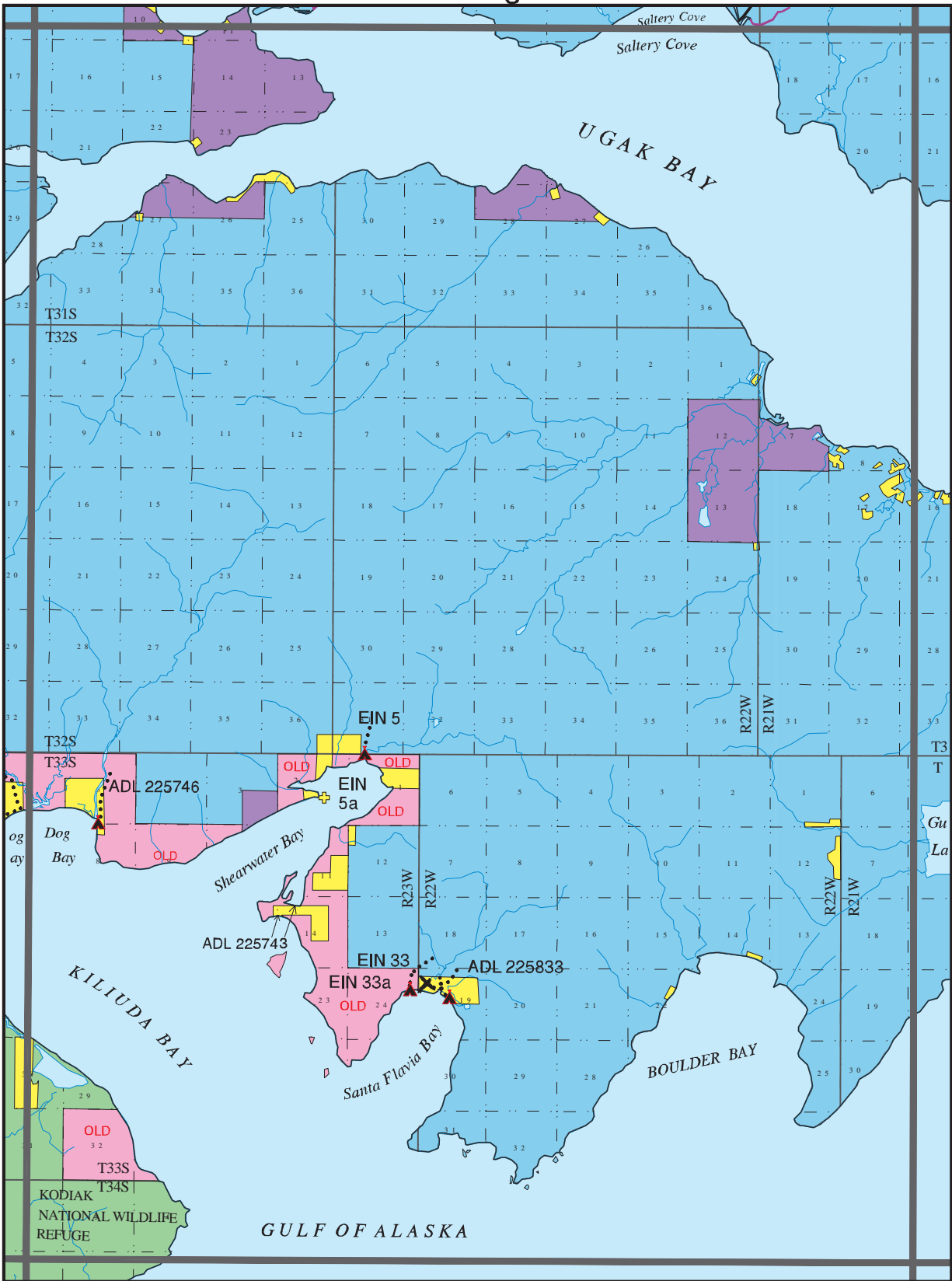
#### **EIN 33**

A proposed trail running northeasterly from the north shore of Santa Flavia Bay at site EIN 33a. (25-foot trail)

#### **EIN 33a**

A campsite on the north shore of Santa Flavia Bay. (one-acre site)

# USGS Quadrangle Kodiak B-3



## - KODIAK PUBLIC ACCESS ATLAS LEGEND -

- |                                      |   |                |                |                                    |
|--------------------------------------|---|----------------|----------------|------------------------------------|
| State                                | Mental Health                           | Highway        | Campsite       | Wheel Strip                        |
| Native                               | University                              | Roads          | Public Cabin   | Beach Strip                        |
| Native, public access by permit only | Private                                 | Trails         | Boat Launch    | Floatplane                         |
| USF&WS                               | Private Tideland                        | Winter Trails  | Dock           | State Determined Navigable Water   |
| Katmai Natl Park                     | Municipal Tideland                      | Atlas Boundary | Visitor Center | Federal Determined Navigable Water |
| Other Federal                        | Alaska State Park                       | USGS Quad      | Picnic Site    |                                    |
| Military                             | Critical Habitat Area                   |                |                |                                    |
| Municipal                            | Small Parcel- color indicates ownership |                |                |                                    |

March, 1997