

KODIAK B-1 & B-2

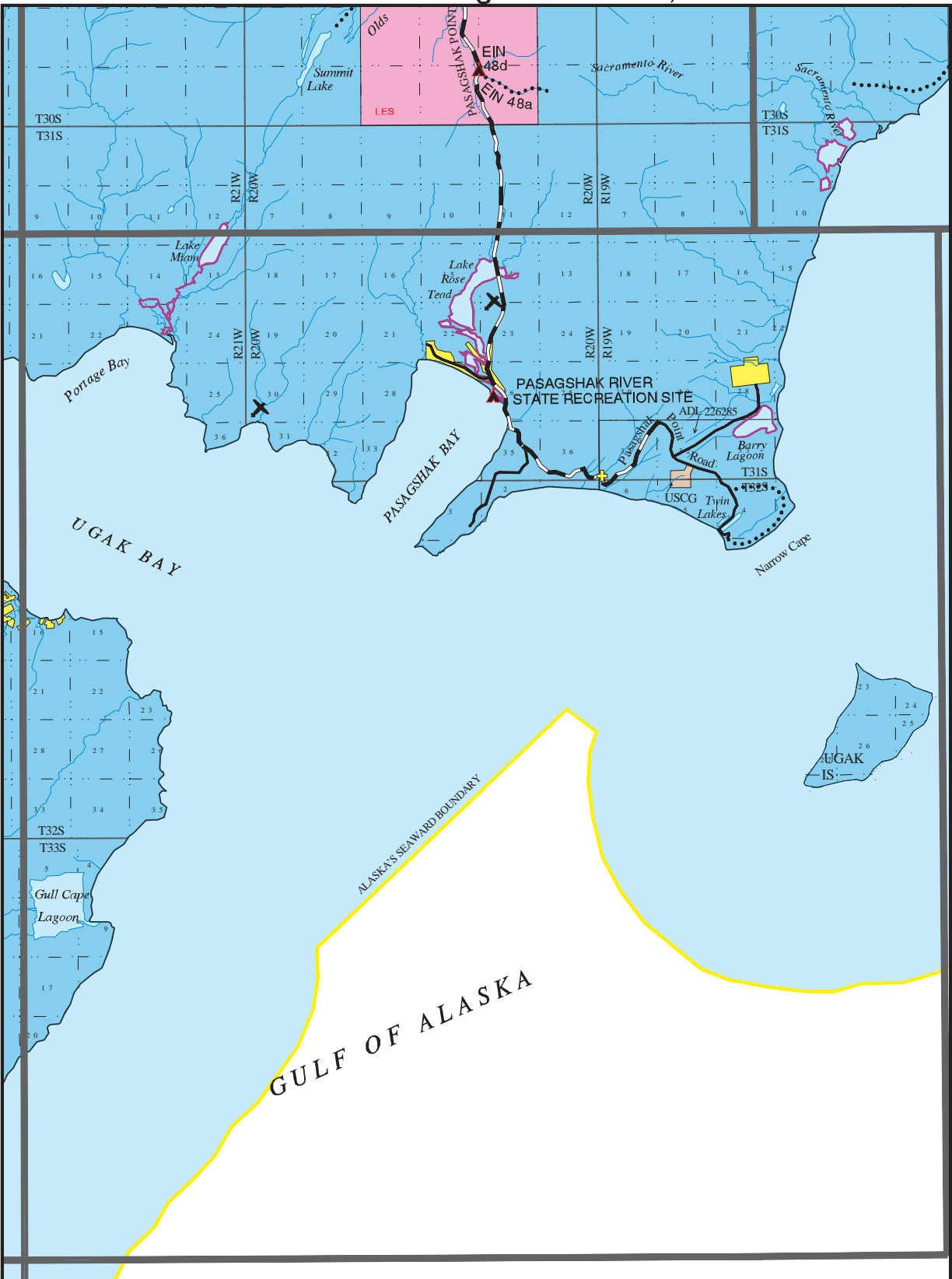
◆ RESERVED EASEMENTS:

No Easements Reserved

ADL 226285

Proposed Orbital Launch Facility operated by the Alaska Aerospace Development Corporation.

USGS Quadrangle Kodiak B-1,B-2



- KODIAK PUBLIC ACCESS ATLAS LEGEND -

State	Mental Health	Highway	Campsite	Wheel Strip
Native	University	Roads	Public Cabin	Beach Strip
Native, public access by permit only	Private	Trails	Boat Launch	Floatplane
USF&WS	Private Tideland	Winter Trails	Dock	State Determined Navigable Water
Katmai Natl Park	Municipal Tideland	Atlas Boundary	Visitor Center	Federal Determined Navigable Water
Other Federal	Alaska State Park	USGS Quad	Picnic Site	
Military	Critical Habitat Area			
Municipal	Small Parcel- color indicates ownership			

March, 1997