

# KAGUYAK D-6

---

## ◆ RESERVED EASEMENTS:

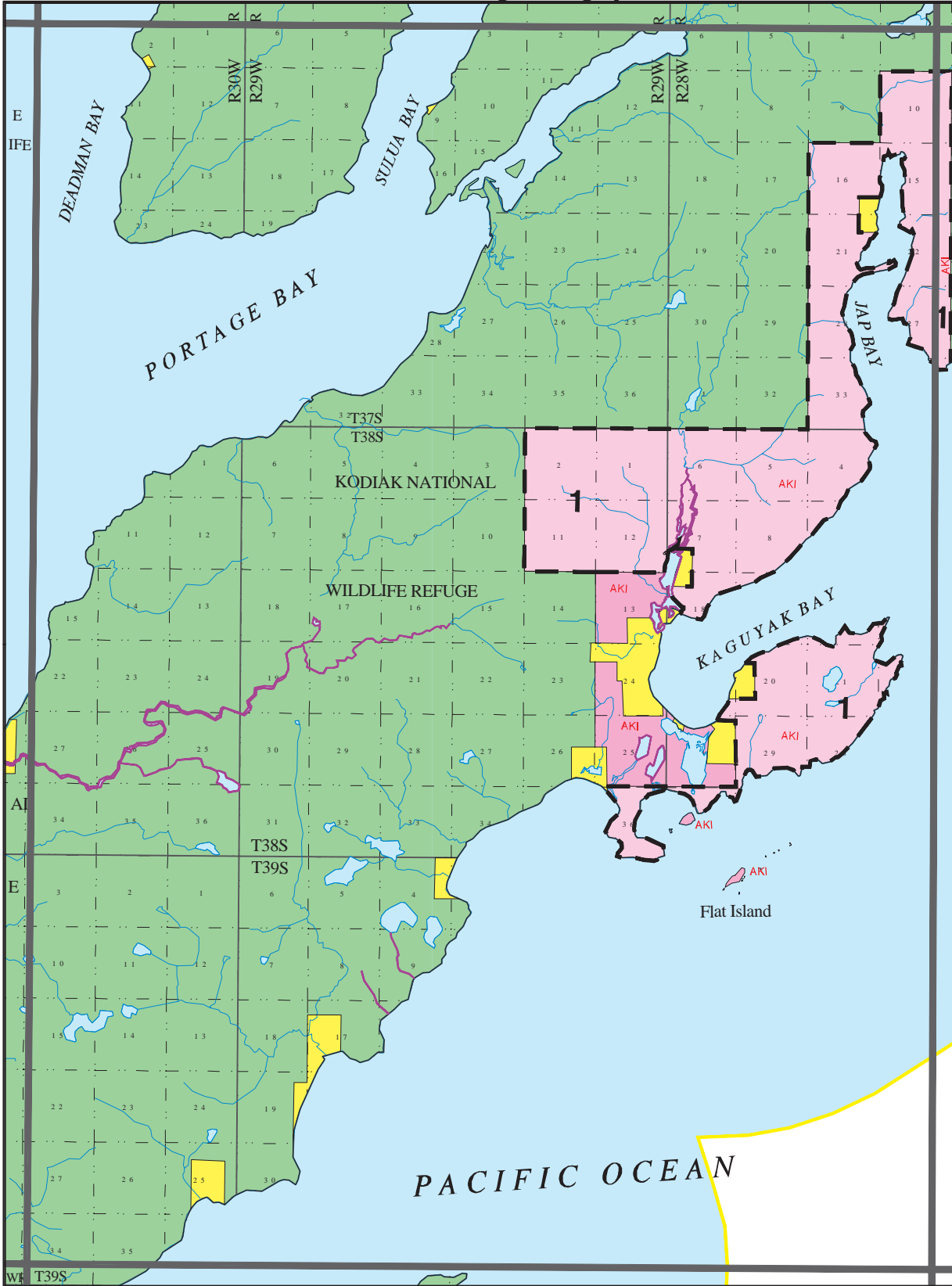
*No Reserved Easements*

## SUPPLEMENTAL LEGEND (keyed to bold numbers on USGS Quad Kaguyak D-6)

- 1** Land will be conveyed to the USF&WS in fee no later than October 1, 1997.

Land shown as "Native, public access by permit only" is available for public use with a land use permit. A land use permit is available for non-commercial sport fishing, hunting and other recreational uses. The land use permit may be obtained from Akhiok-Kaguyak, Inc. Permits require payment of a reasonable fee. Contact the corporation for further information. Legal access provided by FD 137-22 thru 226. This land will be conveyed to the USFS&WS in fee no later than September 30, 1997.

# USGS Quadrangle Kaguyak D-6



## - KODIAK PUBLIC ACCESS ATLAS LEGEND -

- |                                      |   |                |                |                                    |
|--------------------------------------|---|----------------|----------------|------------------------------------|
| State                                | Mental Health                           | Highway        | Campsite       | Wheel Strip                        |
| Native                               | University                              | Roads          | Public Cabin   | Beach Strip                        |
| Native, public access by permit only | Private                                 | Trails         | Boat Launch    | Floatplane                         |
| USF&WS                               | Private Tideland                        | Winter Trails  | Dock           | State Determined Navigable Water   |
| Katmai Natl Park                     | Municipal Tideland                      | Atlas Boundary | Visitor Center | Federal Determined Navigable Water |
| Other Federal                        | Alaska State Park                       | USGS Quad      | Picnic Site    |                                    |
| Military                             | Critical Habitat Area                   |                |                |                                    |
| Municipal                            | Small Parcel- color indicates ownership |                |                |                                    |

March, 1997