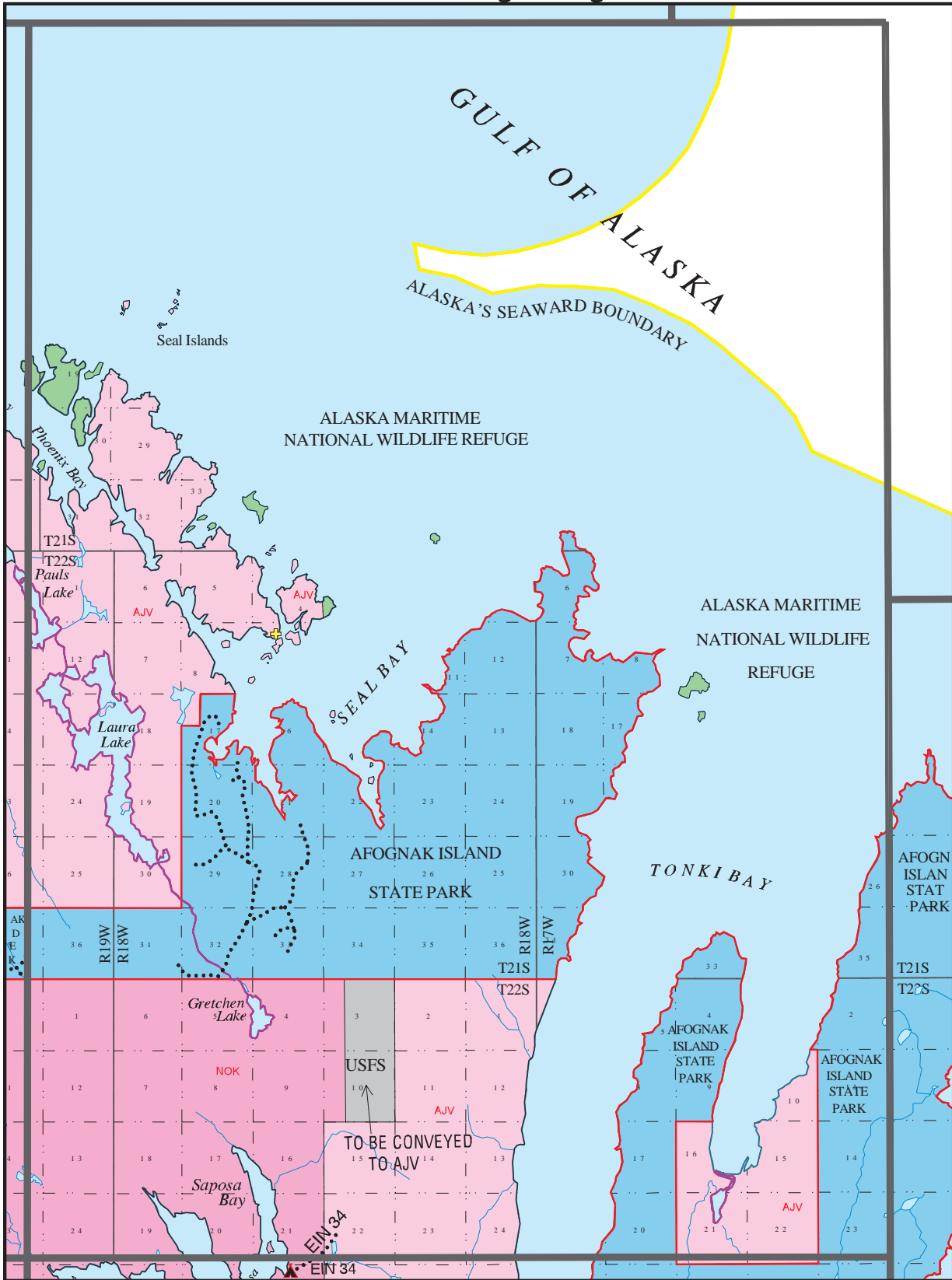


◆ RESERVED EASEMENTS:

EIN 34
A proposed trail running northeasterly from Sapos Bay at site EIN 33. (25-foot trail) **Note:** The trail may be difficult to find or follow. Do not use logging roads in the vicinity of the trail.

See additional information in general information for **Easements**, and specifically **ANILCA 1427(b)(5) easements**, within that section for allowable uses and restrictions for land on Afognak Island identified as Native owned with Public Access.

USGS Quadrangle Afognak B-1



- KODIAK PUBLIC ACCESS ATLAS LEGEND -

State	Mental Health	Highway	Campsite	Wheel Strip
Native	University	Roads	Public Cabin	Beach Strip
Native owned with Public Access	Private	Trails	Boat Launch	Floatplane
USF&WS	Private Tideland	Winter Trails	Dock	State Determined Navigable Water
Katmai Natl Park	Municipal Tideland	Atlas Boundary	Visitor Center	Federal Determined Navigable Water
Other Federal	Alaska State Park	USGS Quad	Picnic Site	
Military	Critical Habitat Area			
Municipal	Small Parcel- color indicates ownership			

March, 1997