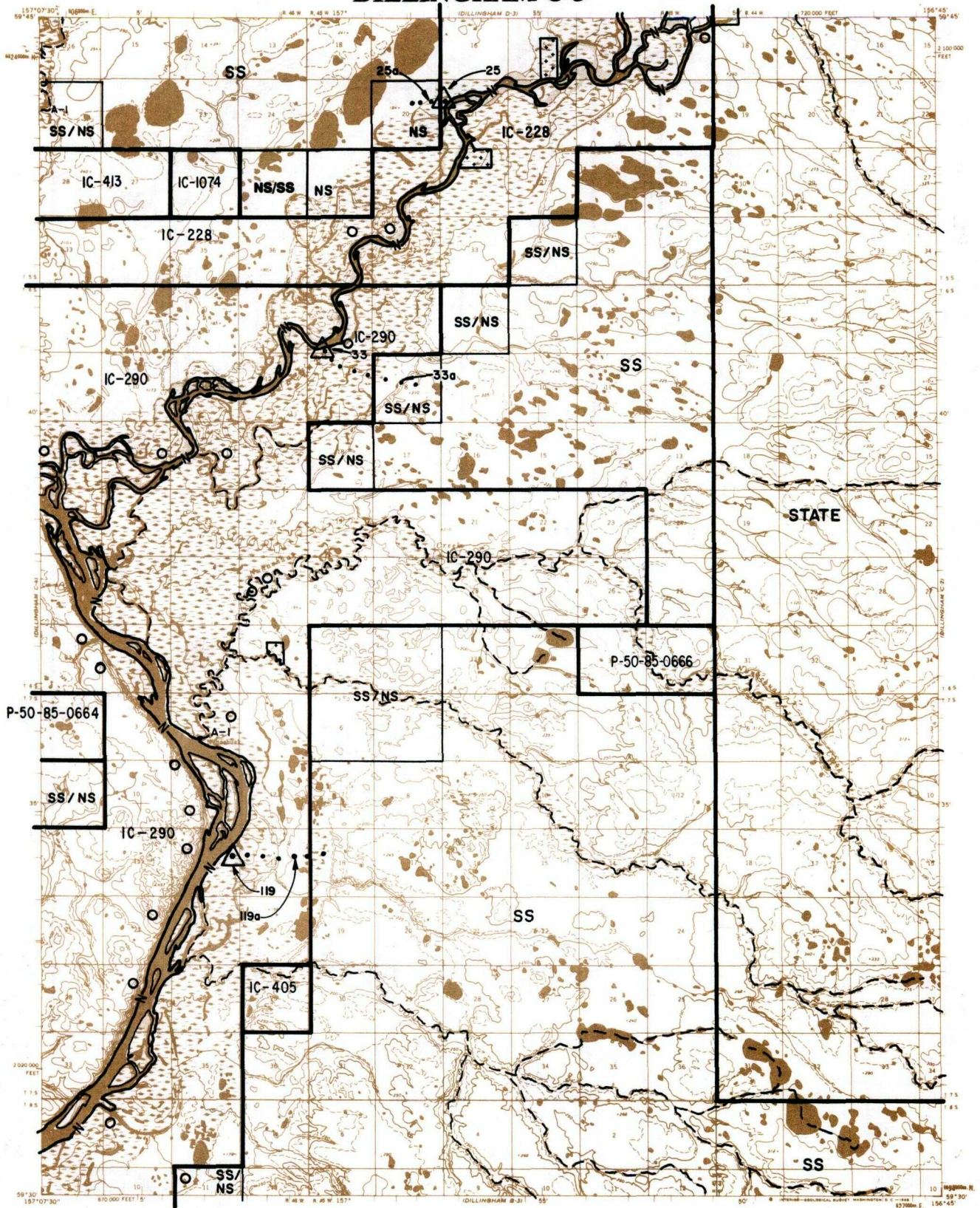


DILLINGHAM C-3



LEGEND

IC OR PAT. BDY.	FED. DETERMINED NAVIGABLE	NATIONAL CONSERVATION UNIT BDY.
WATER EXCLUSION BDY.	STATE DETERMINED NAVIGABLE	PENDING NATIVE ALLOTMENT
NS NATIVE SELECTION	SS STATE SELECTION	NATIVE & STATE SELECTION
STATE STATE OWNED	AIR STRIP EASMENT	CAMPSITE / PARKING EASEMENTS
PRIVATE LANDS	EXISTING TRAIL EASEMENT	ROAD EASEMENT
		PROPOSED TRAIL EASEMENT



RESERVED EASEMENTS

- EIN 25 One (1) acre site on the right bank of the Mulchatna River.
- EIN 25a Proposed access trail from the Mulchatna River westerly to public lands (25 foot trail).
- EIN 33 One (1) acre site on the left bank of the Mulchatna River.
- EIN 33a Proposed access trail from the Mulchatna River easterly to public lands (25 foot trail).
- EIN 119 One (1) acre site approximately 14 miles northeast of New Stuyahok on the left bank of the Nushagak River.
- EIN 119a Proposes access trail 14 miles northeast of New Stuyahok from the left bank of the Nushagak River east to public lands. (25 foot trail).