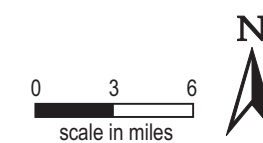
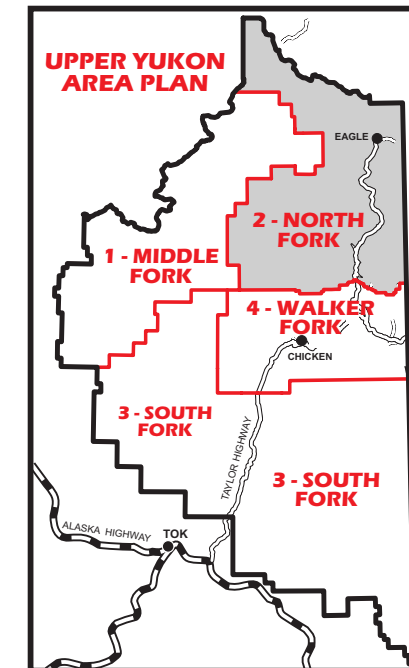
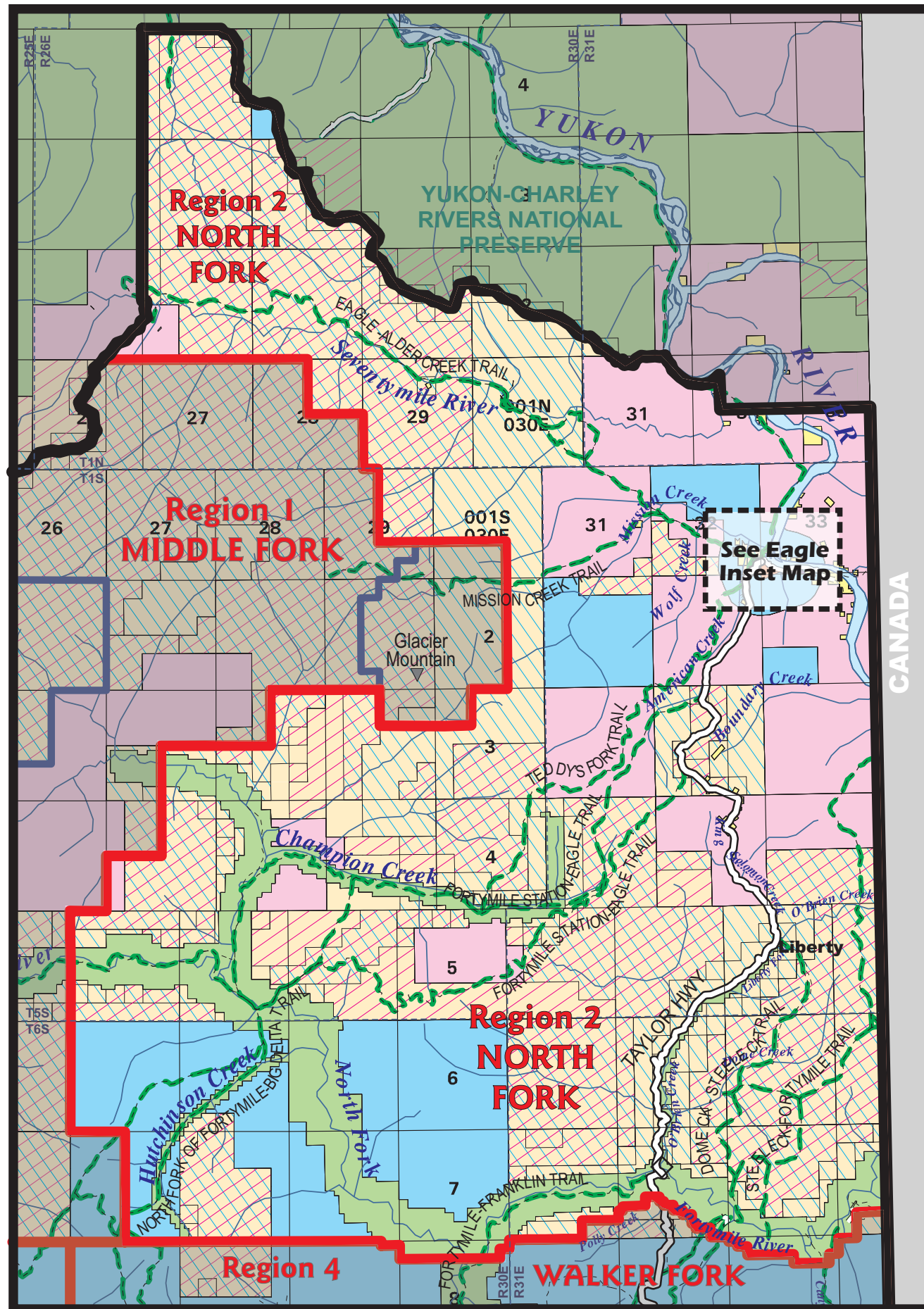


# UPPER YUKON AREA PLAN

## Region 2

### NORTH FORK



#### LEGEND

- National Preserve, Wildlife Refuge, or Wild & Scenic River
- Bureau of Land Management
- Private Land
- Native Corporation Land
- State Land
- Managed by Department of Transportation & Public Facilities
- Municipality
- Tanana Valley State Forest
- State Selected or ANILCA topfiled
- Native Selected
- Campground
- Wayside
- RS 2477 Trails
- Other Trails
- Area Plan Boundary
- Region Boundary
- Management Unit Boundary

#### NOTES:

1. All state lands are open to mineral entry unless closed by a mineral closing order.
2. Trails shown on this map do not necessarily represent all trails in this area.
3. There are many Public Land Orders (PLOs) that affect lands in this region, the most significant of which are PLO 5179, PLO 5180, and PLO 5250. For detailed information regarding these Public Land Orders, refer to the Master Title Plats and Historical Index published by the Bureau of Land Management.
4. This map represents general land status and is not the official record. For more detailed information regarding land status, refer to Status Plats published by DNR and the Master Title Plats published by the Bureau of Land Management.