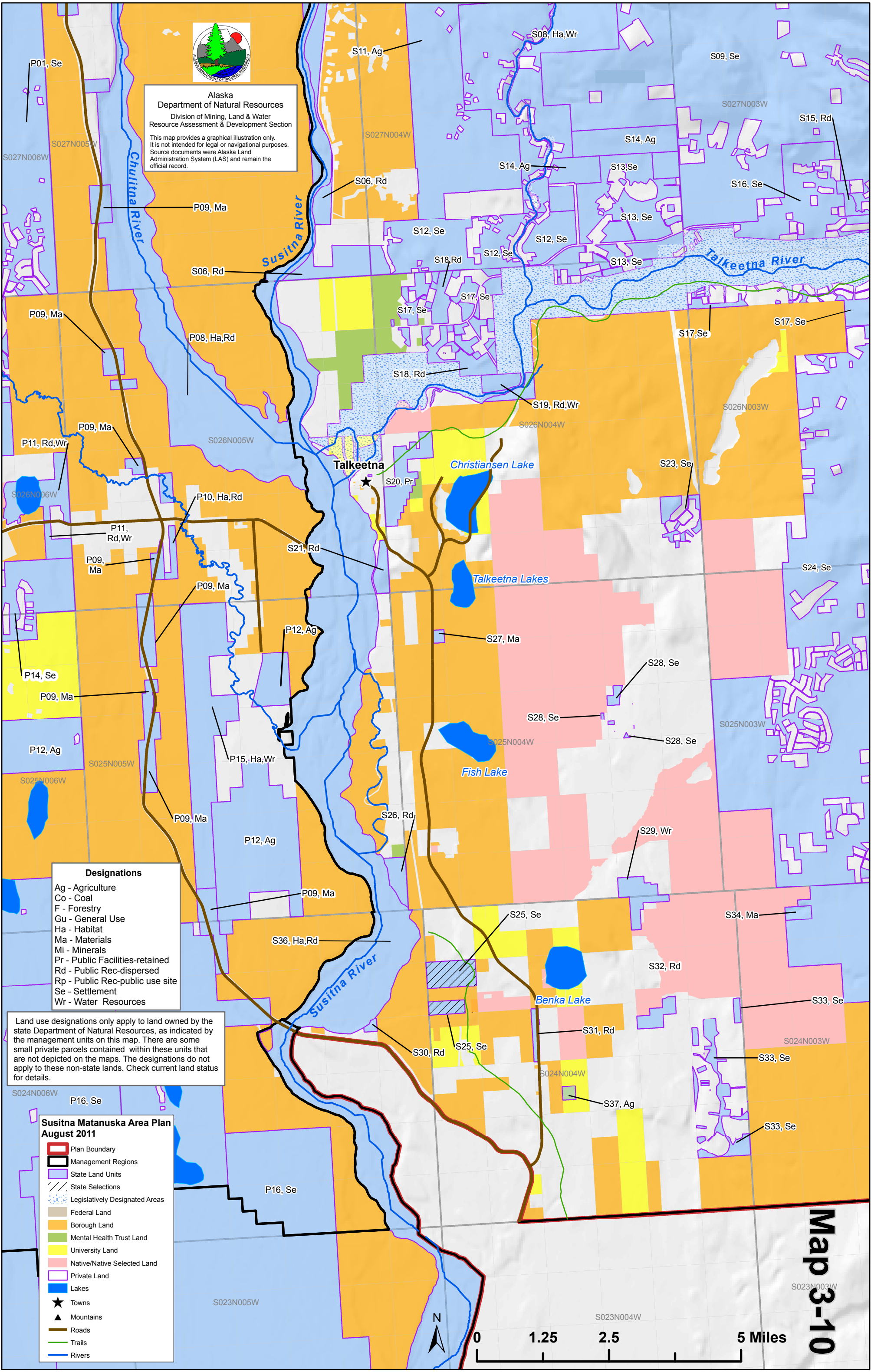




Alaska
Department of Natural Resources
Division of Mining, Land & Water
Resource Assessment & Development Section
This map provides a graphical illustration only.
It is not intended for legal or navigational purposes.
Source documents were Alaska Land
Administration System (LAS) and remain the
official record.



- Designations**
- Ag - Agriculture
 - Co - Coal
 - F - Forestry
 - Gu - General Use
 - Ha - Habitat
 - Ma - Materials
 - Mi - Minerals
 - Pr - Public Facilities-retained
 - Rd - Public Rec-dispersed
 - Rp - Public Rec-public use site
 - Se - Settlement
 - Wr - Water Resources

Land use designations only apply to land owned by the state Department of Natural Resources, as indicated by the management units on this map. There are some small private parcels contained within these units that are not depicted on the maps. The designations do not apply to these non-state lands. Check current land status for details.

- Susitna Matanuska Area Plan
August 2011**
- Plan Boundary
 - Management Regions
 - State Land Units
 - State Selections
 - Legislatively Designated Areas
 - Federal Land
 - Borough Land
 - Mental Health Trust Land
 - University Land
 - Native/Native Selected Land
 - Private Land
 - Lakes
 - Towns
 - Mountains
 - Roads
 - Trails
 - Rivers

Map 3-10