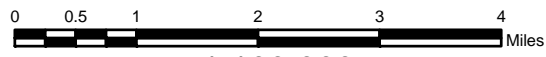


**~State of Alaska~  
Lake Minchumina  
Recordable Disclaimer of Interest Application  
(Map 1 of 1)**



**1:100,000**

BASE MAP: Kantishna River, AK: A-4, A-5 & Mt. McKinley, AK: D-4, D-5

USGS 1:63,360 Topographic Maps

WATERBODY DATA: Digitized from LANDSAT 7 Image Dated May 2002,  
1000m Resolution

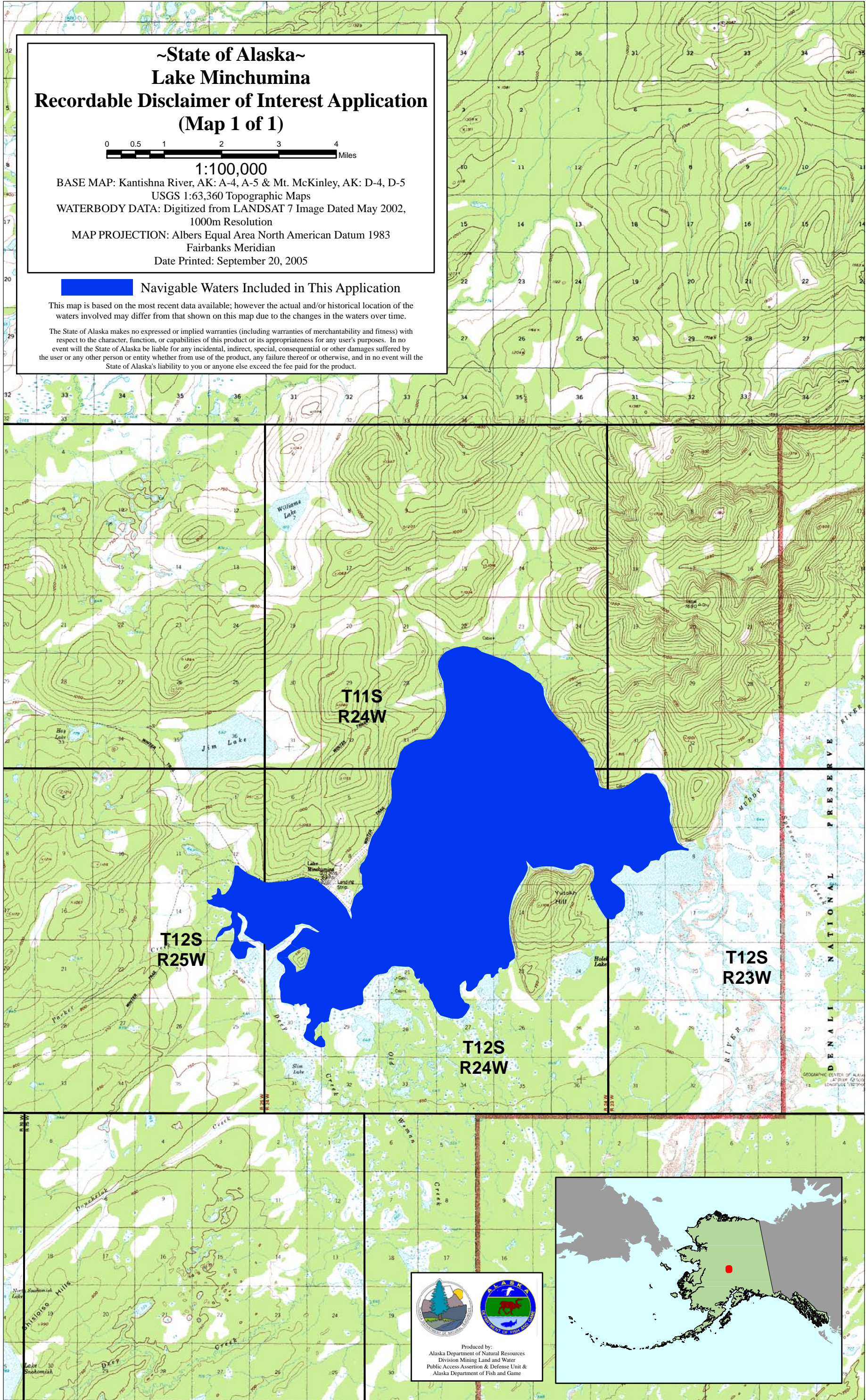
MAP PROJECTION: Albers Equal Area North American Datum 1983  
Fairbanks Meridian

Date Printed: September 20, 2005

**Navigable Waters Included in This Application**

This map is based on the most recent data available; however the actual and/or historical location of the waters involved may differ from that shown on this map due to the changes in the waters over time.

The State of Alaska makes no expressed or implied warranties (including warranties of merchantability and fitness) with respect to the character, function, or capabilities of this product or its appropriateness for any user's purposes. In no event will the State of Alaska be liable for any incidental, indirect, special, consequential or other damages suffered by the user or any other person or entity whether from use of the product, any failure thereof or otherwise, and in no event will the State of Alaska's liability to you or anyone else exceed the fee paid for the product.



Produced by:  
Alaska Department of Natural Resources  
Division Mining Land and Water  
Public Access Assertion & Defense Unit &  
Alaska Department of Fish and Game

