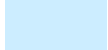







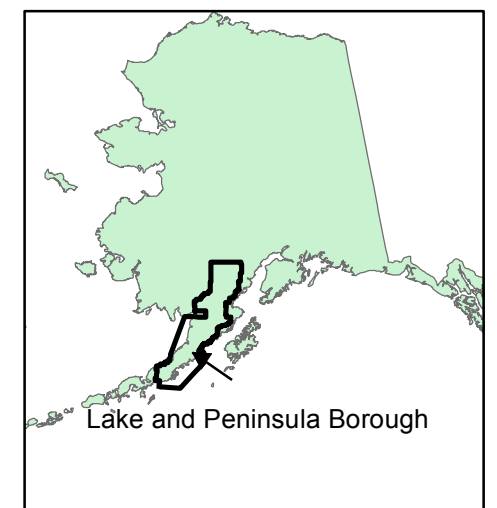
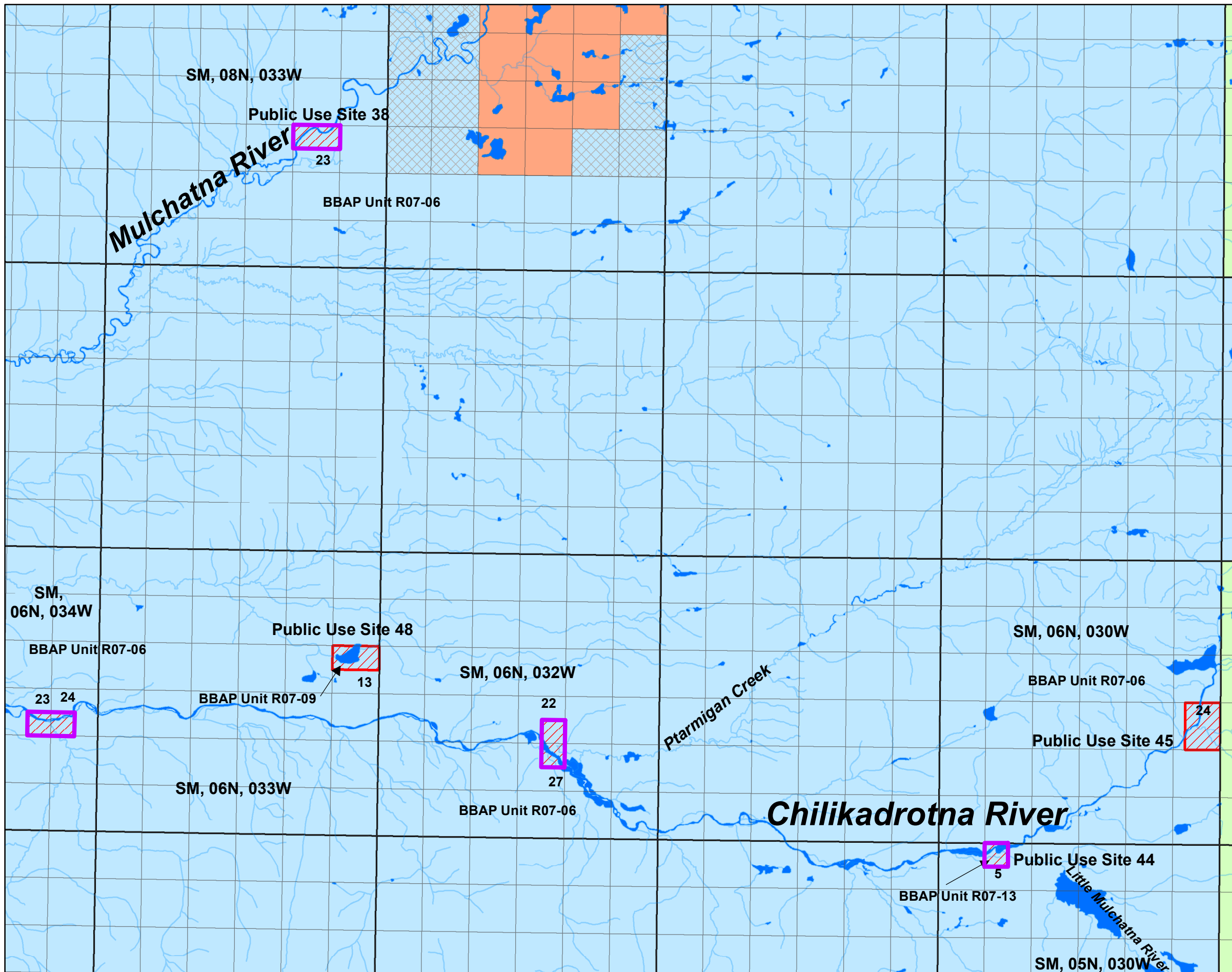


# Priority 2- Map 2

Lake & Peninsula Borough Selections  
ADLs 227003, 227007, 227011

## Legend

-  State Lands
  -  Navigable Waters
  -  Public Waters
  -  State Land Disposal Project Area  
ADLs 229474 & 230817
  -  Lake Clark National Park
- Lake & Peninsula Borough Selections**
-  L&P Previously Conveyed Lands
  -  L&P Approved Selections
  -  Relinquish



This map is for graphic representation only. It is intended to be used as a guide only and may not show the exact location of existing surveyed parcels or show all easements and reservations. Source documents remain the official record.



Created By: SOA-DNR-DMLW-Municipal Entitlements