



Pre-Permitting Environmental / Socio-Economic Data Report Series

Report Series K- Noise

Report K-3 Hourly Noise Levels 2004-2007

Submitted to the Alaska Department of Natural Resources September 2009

Preliminary data. Do not cite or quote.

The Pebble Partnership is providing environmental and socio-economic baseline data collected to inform the development of the Pebble Project to state and federal agencies, project stakeholders and the general public prior to project permitting as part of its commitment to full and open disclosure.

A comprehensive Environmental Baseline Document (EBD) will subsequently be prepared and appended to future project permit applications. The EBD will also be made publicly available when complete.

Collected for the Pebble Partnership by:



Michael Minor & Associates
4923 SE 36th Ave.
Portland, OR 97202

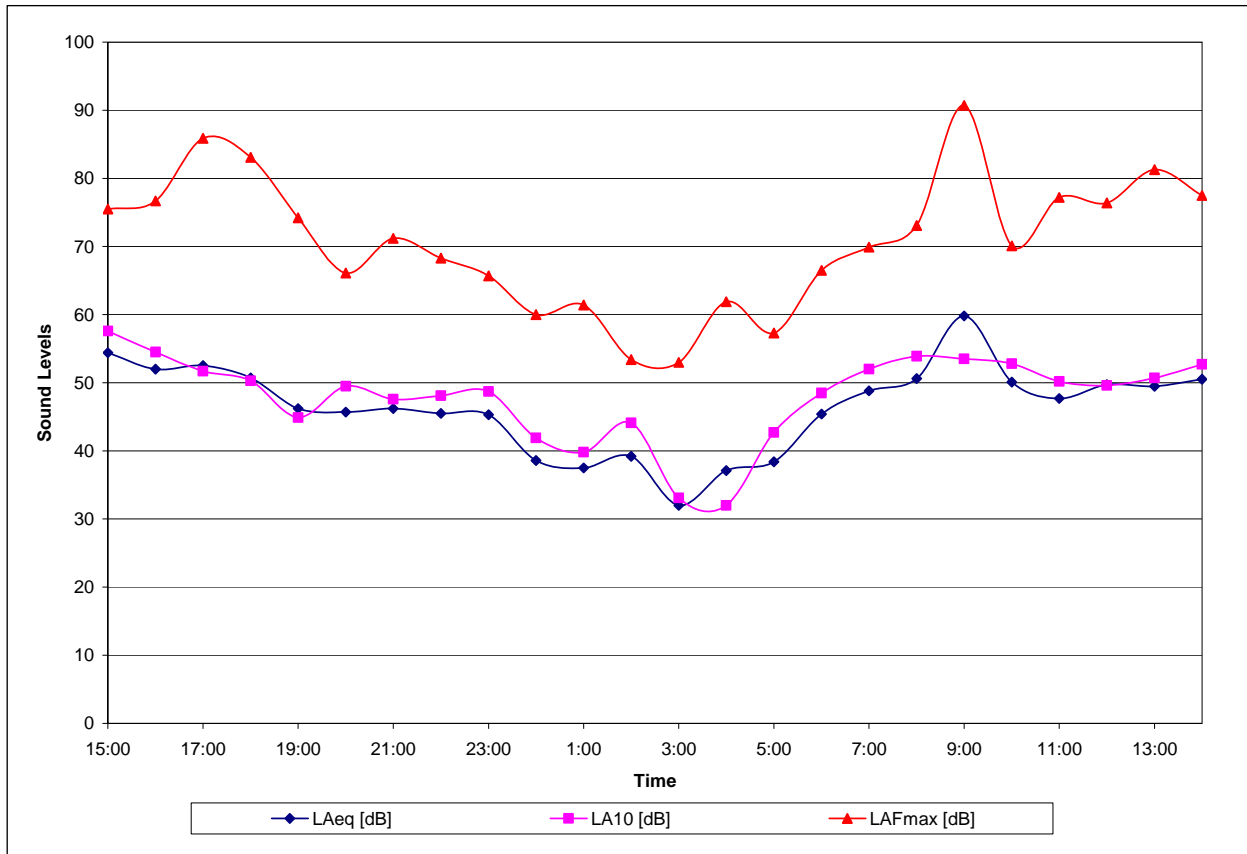


FIGURE K-7: Site M4—Iliamna Post Office and Community Medical Clinic, Winter Hourly Noise Levels

Preliminary Data Only - Do Not Cite or Quote

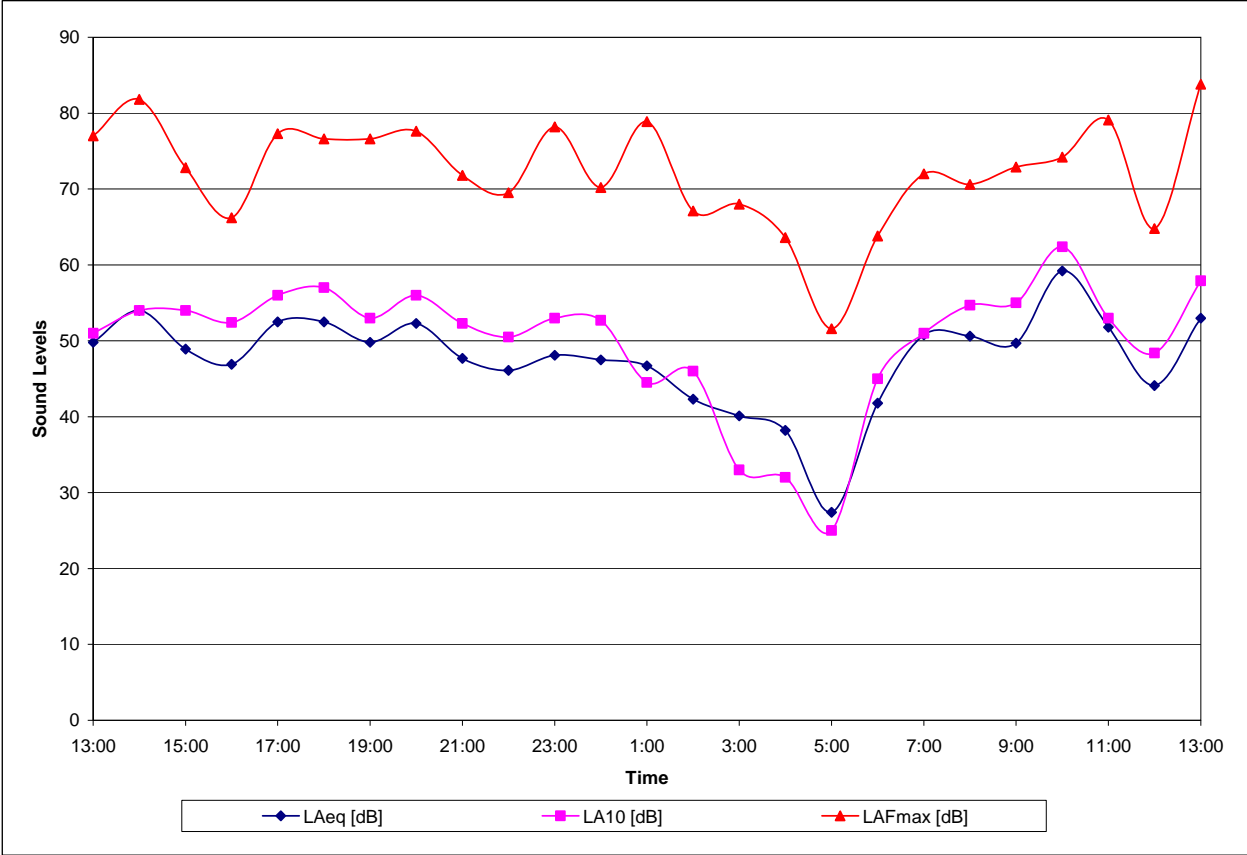


FIGURE K-8: Site M4—Iliamna Post Office and Community Medical Clinic, Summer Hourly Noise Levels

Preliminary Data Only - Do Not Cite or Quote

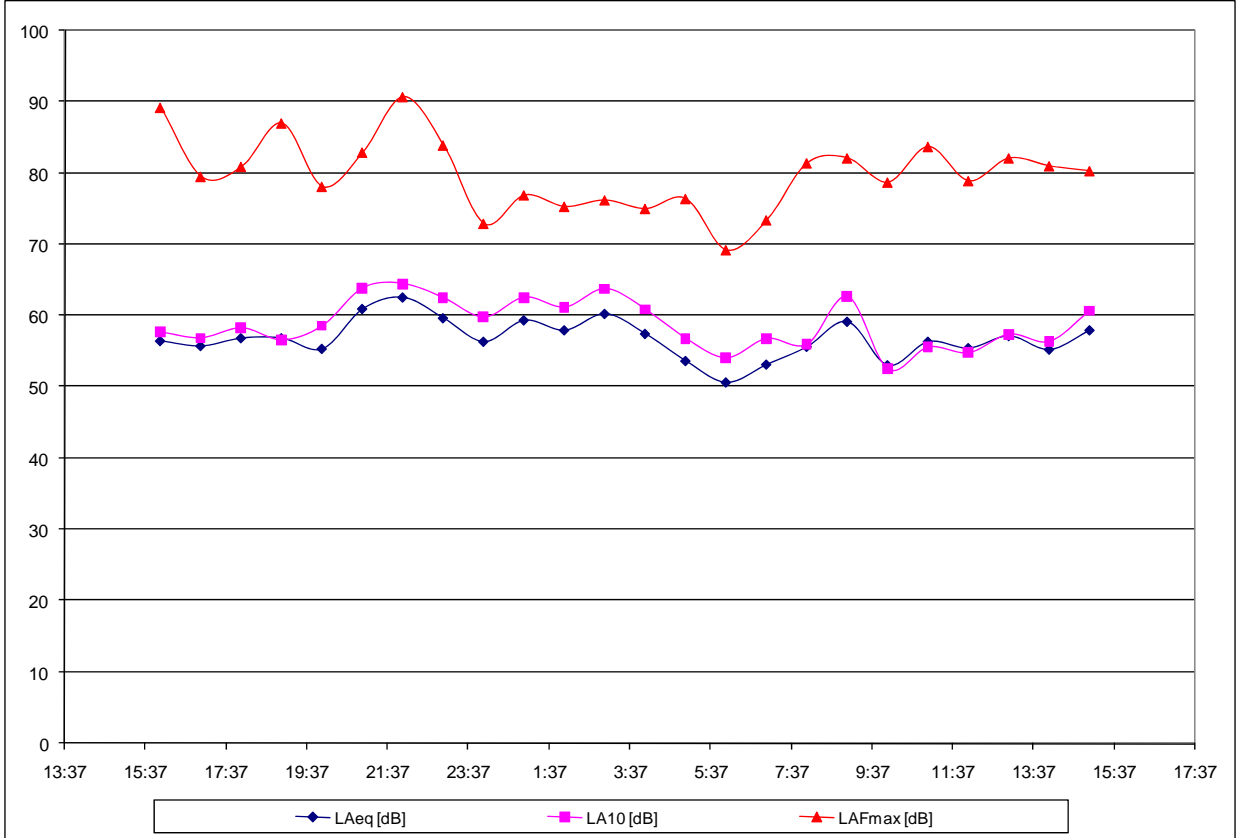


FIGURE K-9: Site M6—Newhalen School, Winter Hourly Noise Levels

Preliminary Data Only - Do Not Cite or Quote

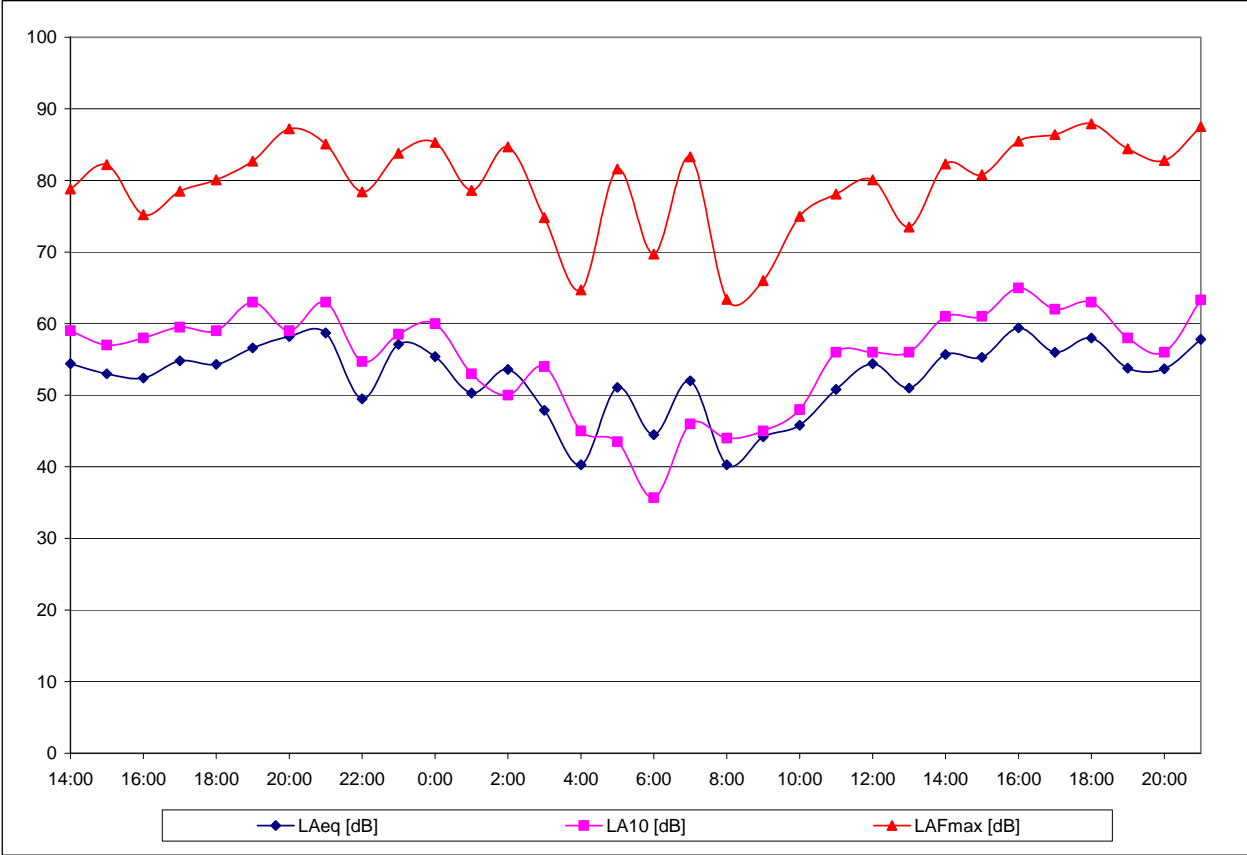


FIGURE K-10: Site M6—Newhalen School, Summer Hourly Noise Levels

Preliminary Data Only - Do Not Cite or Quote

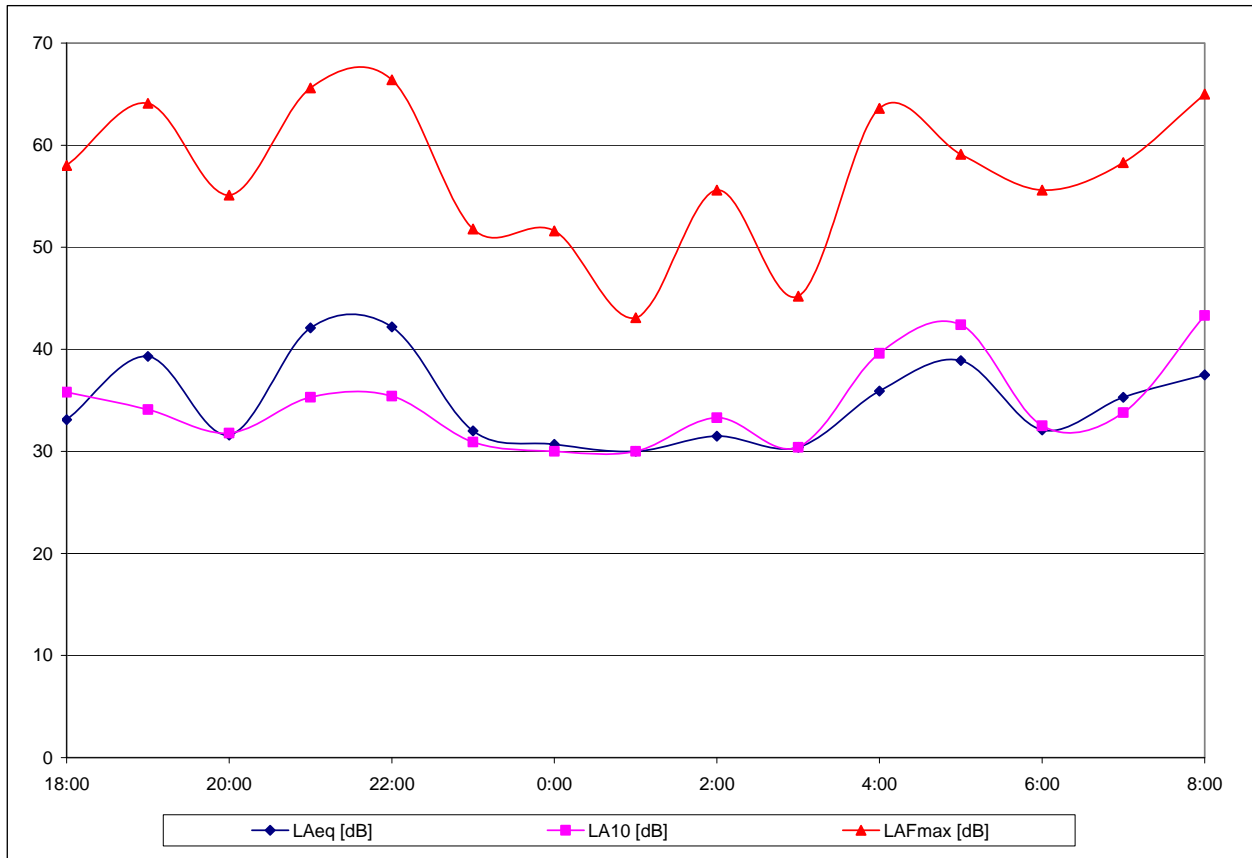


FIGURE K-11: Site M7—Roadhouse Bed and Breakfast, Winter Hourly Noise Levels

Preliminary Data Only - Do Not Cite or Quote