

Tailings Area Sampling Sites Shallow Wells

WEST

NORTH

EAST



EAST

SOUTH

WEST



Tailings Area Sampling Sites Shallow Wells



Tailings Area Sampling Sites Deep Wells

WEST

NORTH

EAST



FWMP 59 MW-T-00-01A



EAST

SOUTH

WEST



FWMP 28 MW-2D



Tailings Area Sampling Sites Deep Wells



Tailings Area Sampling Sites Surface Sites

WEST

NORTH

EAST



EAST

SOUTH

WEST

FWMP 9 Tributary Creek



FWMP 60 Althea Creek



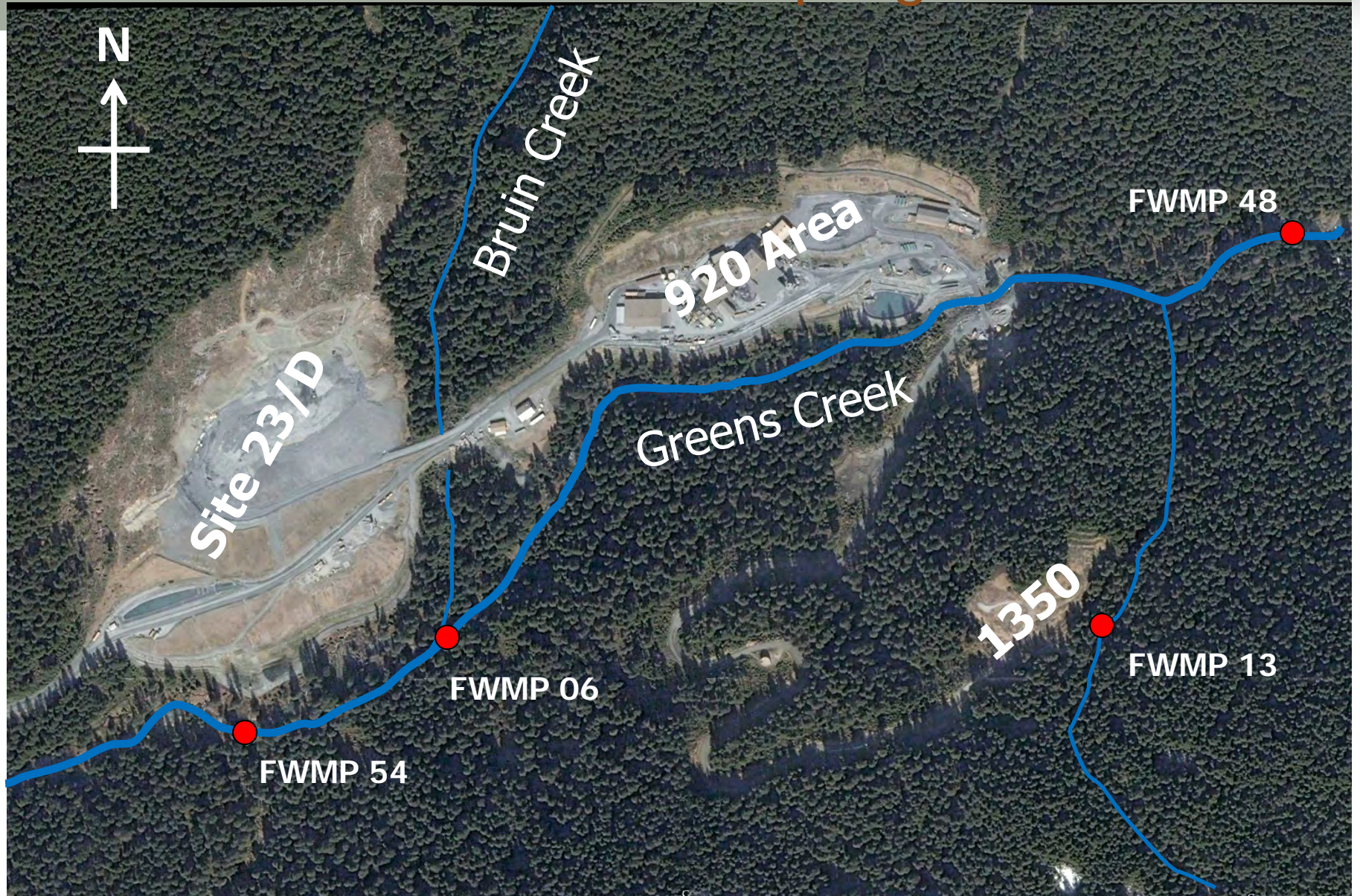
Tailings Area Sampling Sites Surface Sites



Tailings Area Sampling Sites Surface Sites



Greens Creek & 1350 Sampling Sites



Bruin Creek & Site 23/ D Sampling Sites



Greens Creek & 1350 Sampling Sites



Bruin Creek & Site 23/ D Sampling Sites



Tailings Area Sampling Sites Surface Sites

WEST

NORTH

EAST



EAST

SOUTH

WEST



Tailings Area Sampling Sites Shallow Wells

WEST

NORTH

EAST



FWMP 58 MW-T-00-01C



EAST

SOUTH

WEST



FWMP 27 MW-2S



FWMP 32 MW-5S



FWMP 29 MW-3S



HECLA MINING COMPANY

Tailings Area Sampling Sites Deep Wells

WEST

NORTH

EAST



EAST

SOUTH

WEST



Tailings Area Sampling Sites

WEST

NORTH

EAST



FWMP 58 MW-T-00-01C
FWMP 59 MW-T-00-01A

EAST

SOUTH

WEST



FWMP 9 Tributary Creek

FWMP 60 Althea Creek

FWMP 27 MW-2S
FWMP 28 MW-2D

FWMP 32 MW-5S

FWMP 29 MW-3S

New FWMP Site 609



Greens Creek New FWMP Sites 61 and 62

