

# Knik River Public Use Area Planning Update #1

November 2006



Division of Mining, Land & Water

## Overview

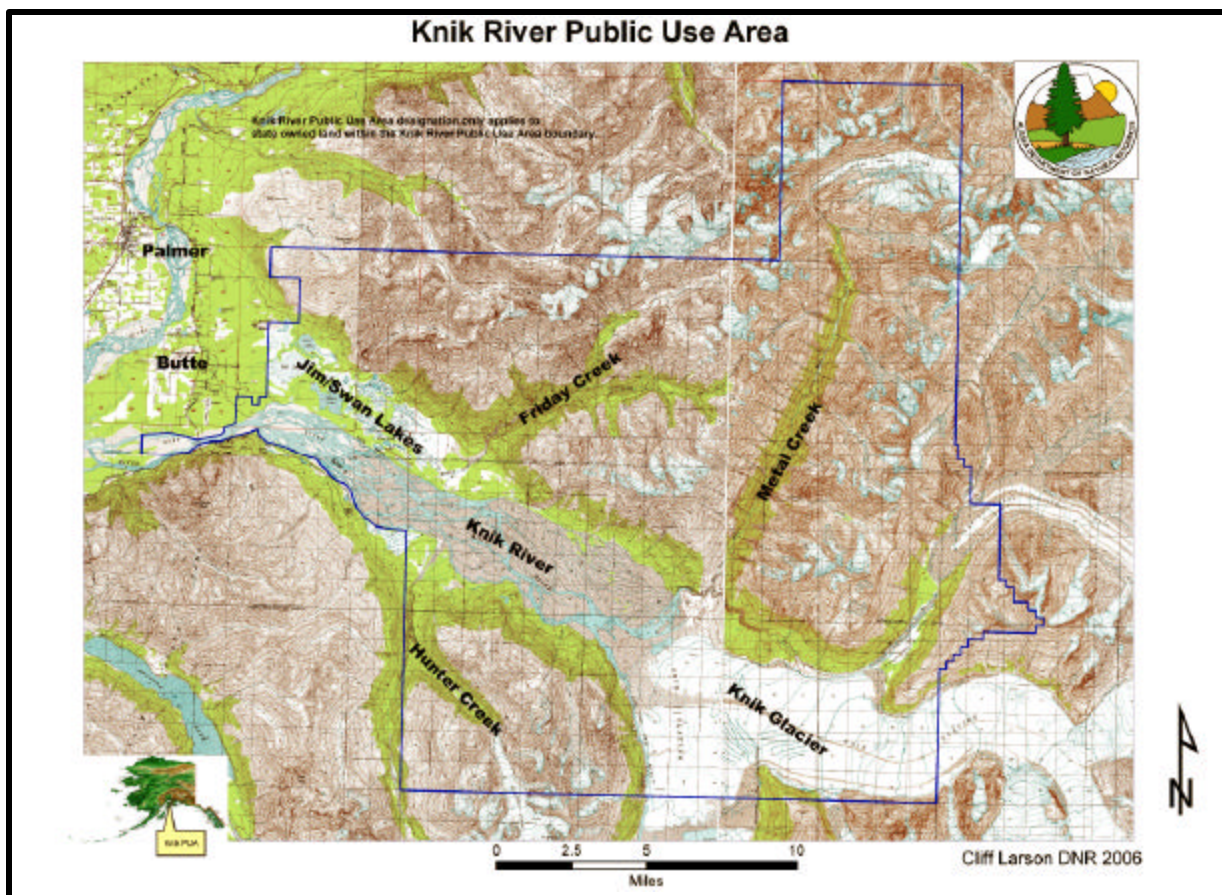
The Department of Natural Resources has initiated a process for developing a management plan for the Knik River Public Use Area. The plan will be developed to manage use and protect and maintain fish and wildlife habitat resources within the public use area. The process for developing the plan will provide multiple opportunities for the public and stakeholders to be involved in the process.

## Establishment of the Public Use Area

House Bill 307 created the Knik River Public Use Area (KRP UA) and became effective September 28, 2006. This legislation was codified in statute as AS 41.23.180-230. The legislation included funding for an 18-month planning process in addition to funds for management of the area.

## Description of the Area

The KRP UA encompasses approximately 200,000 acres of state-owned lands (land and water) and approximately 60,000 acres of State- and Native-selected lands currently administered by the Bureau of Land Management. There are also a few private parcels in area. The KRP UA is located east of Butte and includes the upper Knik River, associated floodplain and flats and the western edge of the Chugach Mountains. The public use area currently receives a high level of public use because of its outstanding recreational opportunities including off highway vehicle use, hunting, fishing, boating, hiking, biking, skiing, and horseback riding.



### **What is a Public Use Area?**

A Public Use Area is an area of state land that is designated for specific purposes through a legislative designation that will be managed by the DNR Division of Mining, Land and Water. The legislation designating this KRPUA specifies the area's purposes, management authority, and allowed uses.

### **What has occurred so far?**

The Department of Natural Resources held an informational meeting at the Butte Elementary School on November 6th to provide the public with: information on the planning process; basic background information on the public use area; and information on how to meaningfully participate in the planning process. The Department also developed a website ([www.knikriver.alaska.gov](http://www.knikriver.alaska.gov)) that provides information on the area including maps, media releases, comment and registration forms, and schedule of upcoming events.

### **What happens next?**

The Department will hold a series of public scoping meetings in Butte, Wasilla and Anchorage. The purpose of these meetings will be to solicit public input on use, resources, and issues within the KRPUA. Through these public scoping meetings and contacts, the Department will gather information that will be used in the development of the management plan.

### **How do I become involved in the process?**

You have many opportunities to become involved in the planning process. You are encouraged to:

- Attend public scoping meetings,
- Enroll yourself or your agency on the contact list,
- Submit written comments online or at the address provided below, and
- Review information, maps and draft planning documents on the website

### **For information related to the planning process please contact:**

Brandon McCutcheon, Plan Project Manager  
550 W. 7<sup>th</sup> Ave., Suite 1050  
Anchorage, AK 99501  
Phone: 907-334-2551  
Email: [knikriverpua@dnr.state.ak.us](mailto:knikriverpua@dnr.state.ak.us)

You can also visit the KRPUA website at [www.knikriver.alaska.gov](http://www.knikriver.alaska.gov)