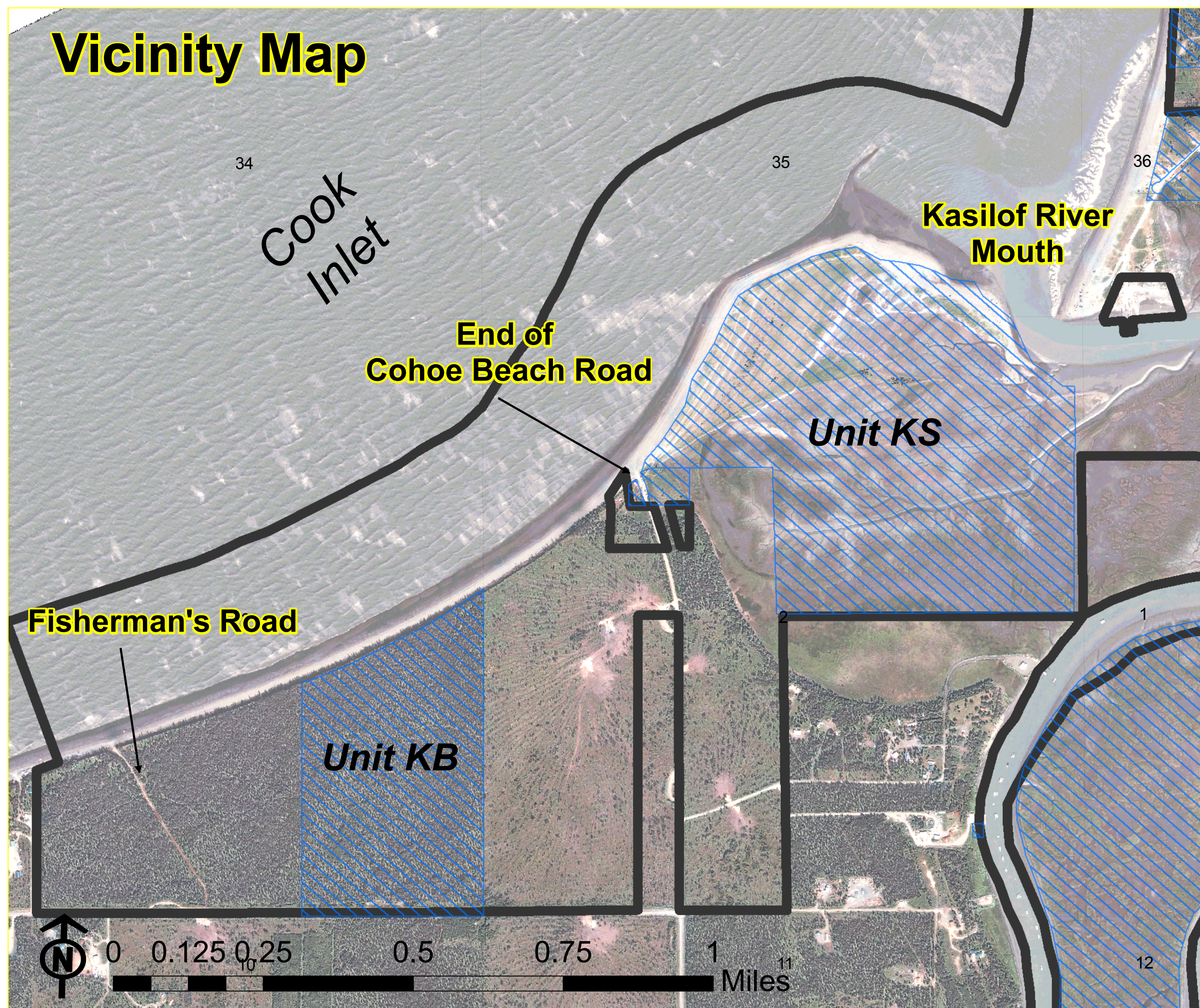
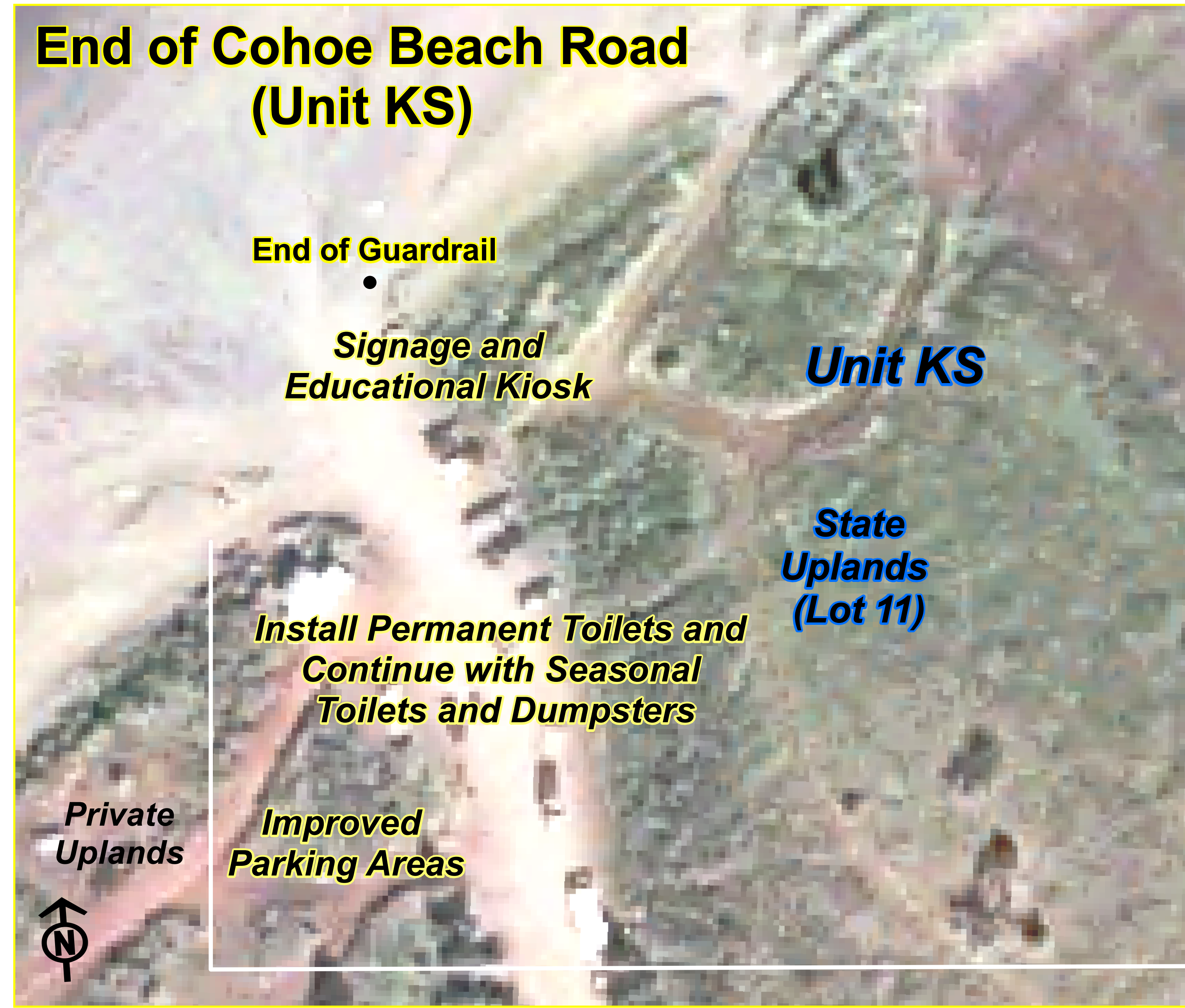


### Vicinity Map



### End of Cohoe Beach Road (Unit KS)



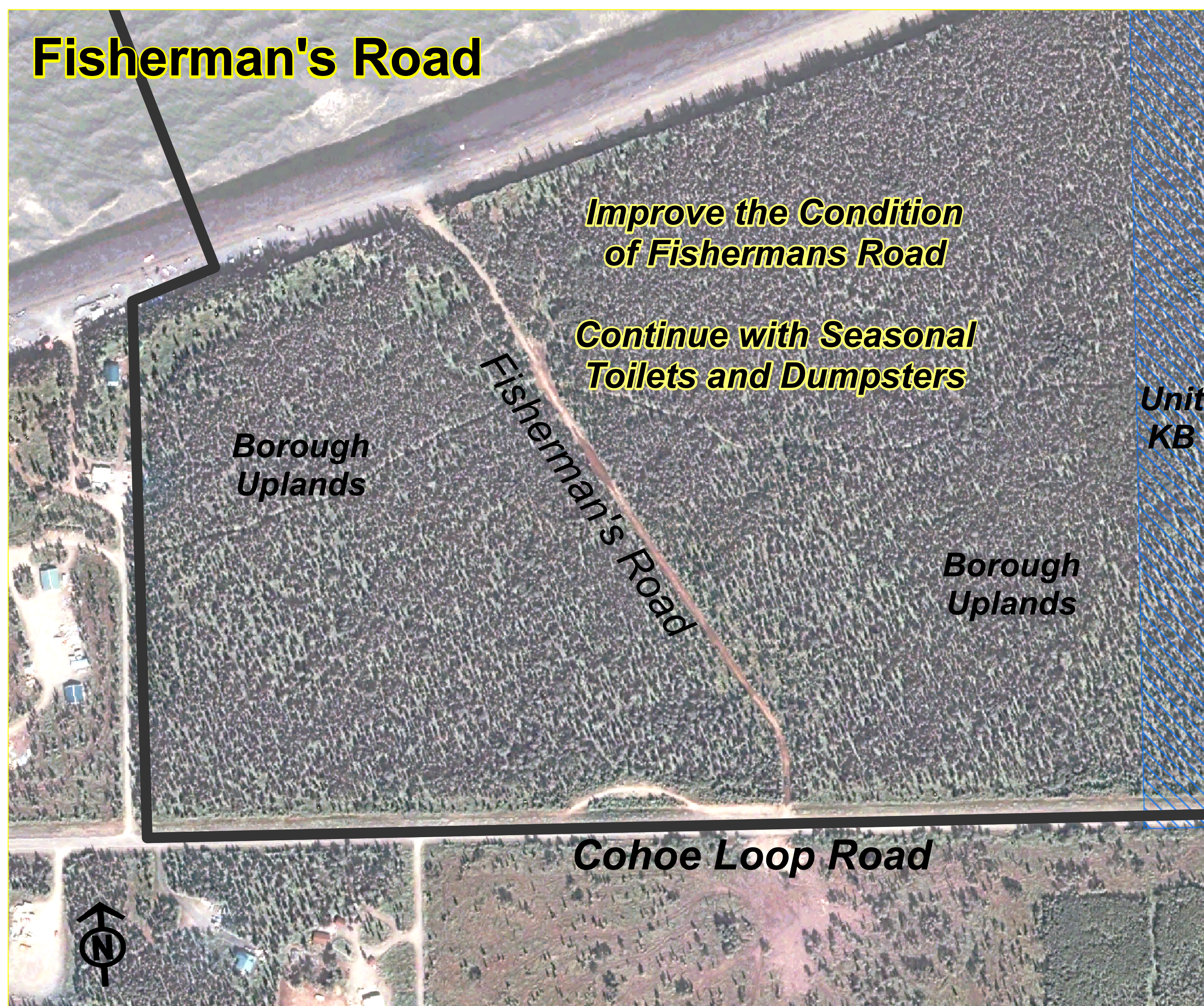
## Kasilof River Special Use Area (ADL 230992) Appendix B: Map A

### Facilities and Improvement Recommendations (South Side)

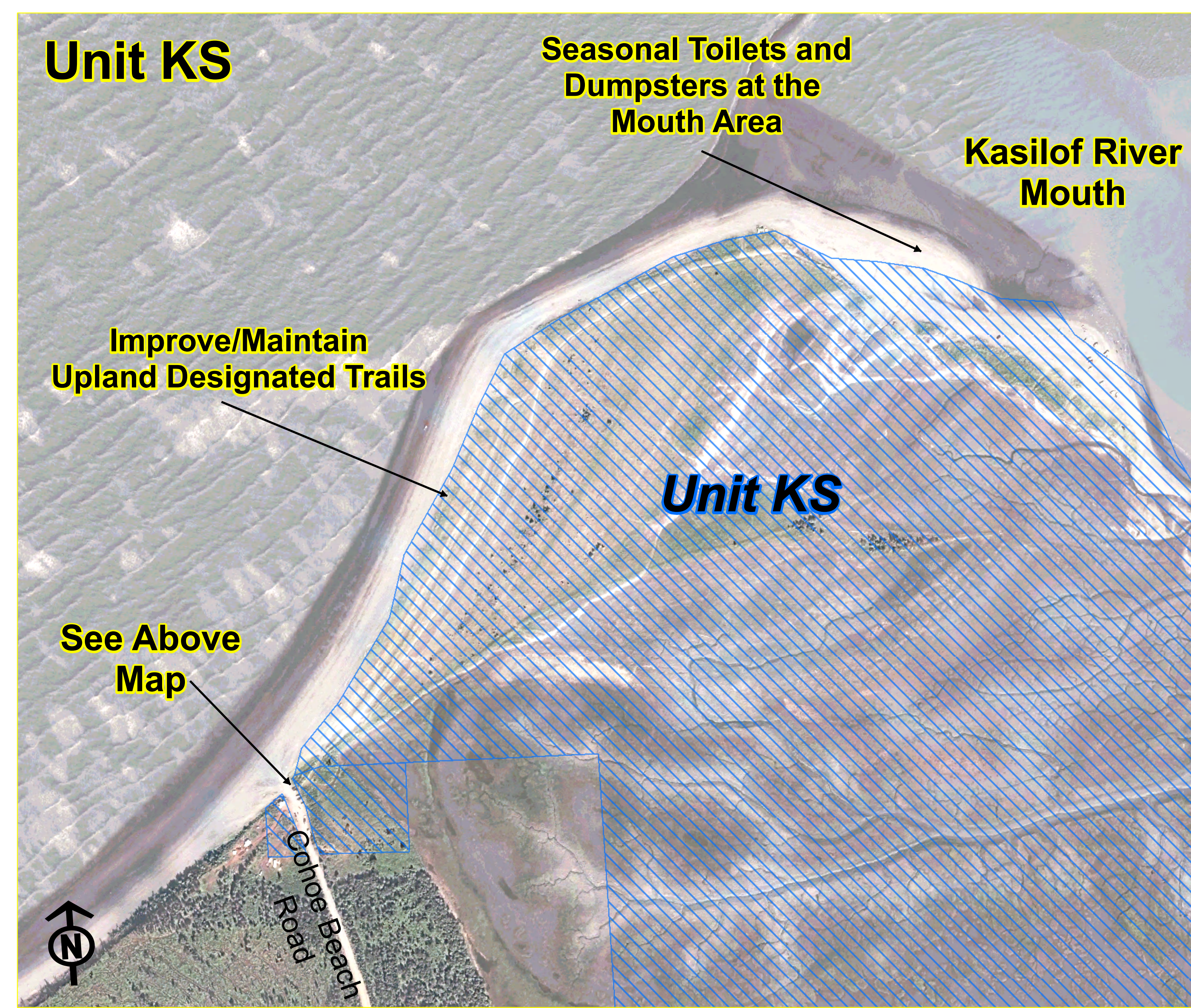
- KARSUA BOUNDARY
- State Upland

**NOTE:**  
These proposed facilities and improvements are depicted in their approximate locations. See also Appendix B: Facilities and Improvement Recommendations

### Fisherman's Road



### Unit KS



**NOTES:**  
The State owned and managed tide and submerged lands extend three miles seaward of mean low tide.  
This map is only a graphical representation of the general land status in the area and is intended to be used only as a guide. Consult official land ownership records for details and precise property boundaries.



Produced:  
May 2011  
DNR DMLW SCRO