


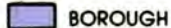




SUSITNA LOWLANDS

part 1 of 3

LAND STATUS

-  FEDERAL
-  STATE SELECTED
-  STATE
-  BOROUGH
-  PRIVATE (Includes Native, Native selected, university, university selected, and other private lands)
-  PAST STATE AND BOROUGH LAND SALES



NOTE: This information has been generalized to show ownership in blocks of approximately 320 acres or greater. Hence, many isolated private lots are not shown, e.g., many lakes which appear public are ringed with private lots.

LAND USE DESIGNATIONS

Designations in CAPITAL LETTERS are primary designations; those in lower case letters are secondary designations; areas shown with stars ★ are proposed for legislative or administrative designation. Statements in *italics* indicate whether areas are open or closed to mineral location and coal leasing; all areas are available for oil and gas leasing.

MGT. UNIT 1 – UPPER YENTNA

- 1a WATER RESOURCES, WILDLIFE HAB.; forestry, public rec.; *Open*
- ★1b WATER RESOURCES, WILDLIFE HAB.; forestry, public rec.; *Open*

MGT. UNIT 2 – KICHATNA/NAKOCHNA

- 2a PUBLIC REC., WILDLIFE HAB.; forestry, remote cabins; *Open*
- 2b SETTLEMENT (past remote parcel areas); forestry, public rec., wildlife habitat; *Closed*
- 2c SETTLEMENT (existing subdivisions); forestry, public rec., wildlife habitat; *Closed*
- 2d PUBLIC REC., WATER RES., WILDLIFE HAB.; forestry; *Open*
- 2e PUBLIC REC., WILDL. HAB.; *Open*
- 2f RESOURCE MGMT.— Values: For., Settl., Wildl. Hab.; *Open*

MGT. UNIT 3 – SKWENTNA RIVER/HAYES RIVER

- 3a FORESTRY, PUBLIC REC., WATER RES., WILDLIFE HAB.; remote cabins; *Open*
- 3b SETTL.; for., pub. rec., wildl. hab.; *Closed Prior to Disposal*
- ★3c WATER RESOURCES, WILDLIFE HAB.; forestry, public rec; *Open*

MGT. UNIT 4 – SKWENTNA FLATS

- 4a PRIMARILY PRIVATE LAND (Native land and existing state subdivision); *Closed within Subdivision*
- 4b FORESTRY, PUBLIC RECREATION, WATER RESOURCES, WILDLIFE HABITAT; remote cabins; *Open*
- 4d BOROUGH LAND BANK — Values: Public Recreation, Settlement, Wildlife Habitat; *Open*
- 4e SETTLEMENT (existing subdivision); forestry, public recreation, wildlife habitat; *Closed*

MGT. UNIT 5 – MIDDLE YENTNA

- 5a FORESTRY, PUBLIC RECREATION, WATER RESOURCES, WILDLIFE HABITAT; *Open*
- 5b RESOURCE MGT. — Values: Agriculture, Forestry, Public Recreation, Settlement, Wildlife Habitat; *Open*

MGT. UNIT 6 – ALEXANDER CREEK

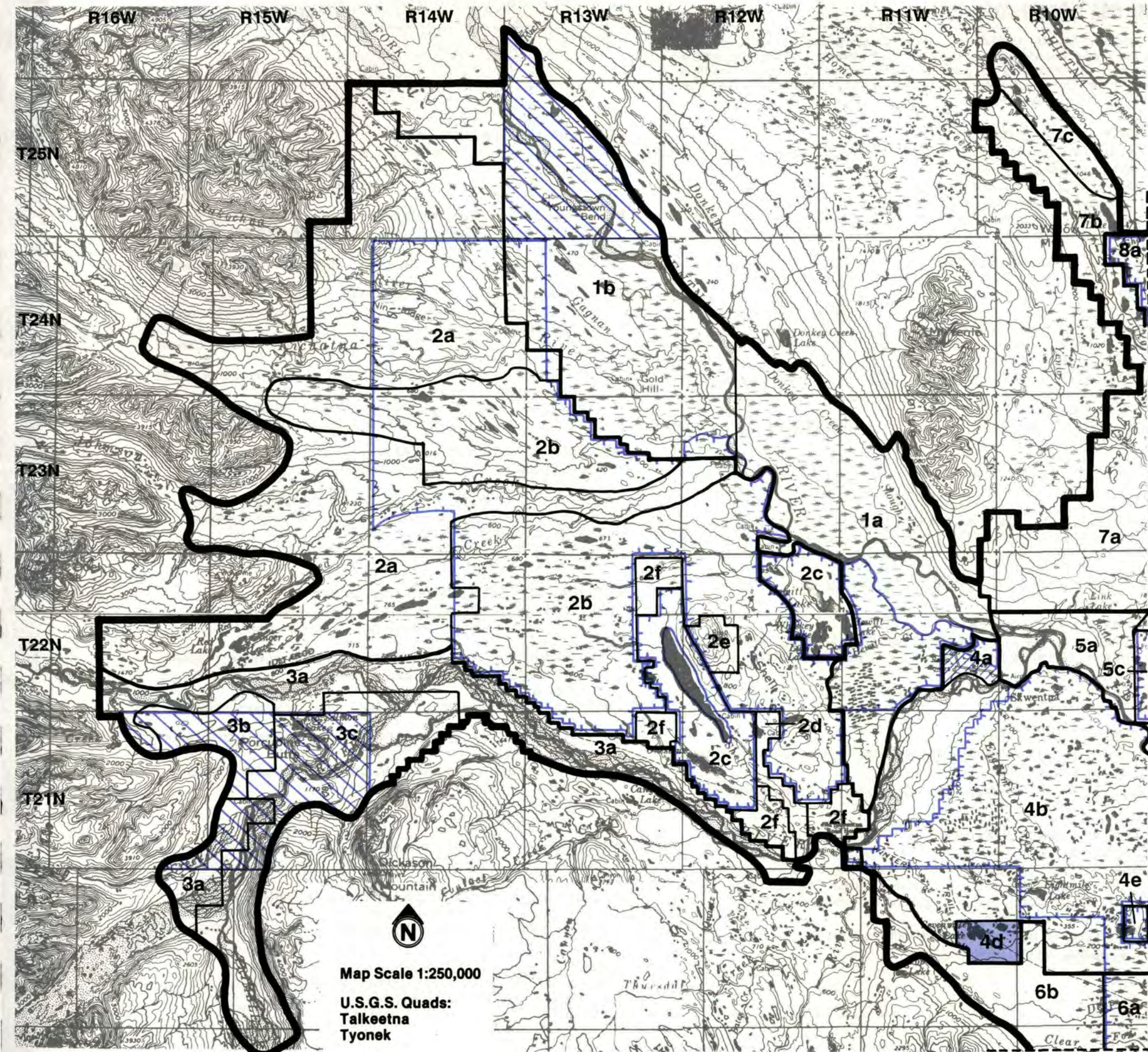
- 6a WATER RES., WILDLIFE HAB.; forestry, pub. rec., remote cabins; *Open*
- 6b RESOURCE MGT./BOROUGH LAND BANK — Values: Agriculture, Forestry, Settlement, Wildlife Habitat; *Partially Open*

MGT. UNIT 7 – LAKE CREEK

- ★7a FORESTRY, PUBLIC RECREATION, WILDLIFE HABITAT; *Partially Open*
- ★7b PUBLIC RECREATION, WATER RESOURCES, WILDLIFE HABITAT; forestry; *Closed*
- 7c SETTLEMENT; forestry, public recreation, wildlife habitat; *Closed prior to Disposal*

MGT. UNIT 8 – McDOUGAL

- 8a SETTLEMENT (past remote parcel offering); forestry, public recreation, wildlife habitat; *Closed*



Map Scale 1:250,000

U.S.G.S. Quads:
Talkeetna
Tyonek

LAND USE DESIGNATIONS

Susitna Lowlands

Designations in CAPITAL LETTERS are primary designations; those in lower case letters are secondary designations; areas shown with stars ★ are proposed for legislative or administrative designation. Statements in *italics* indicate whether areas are open or closed to mineral location and coal leasing; all areas are available for oil and gas leasing.

MGT. UNIT 4 – SKWENTNA FLATS

- 4b FORESTRY, PUBLIC RECREATION, WATER RESOURCES, WILDLIFE HABITAT; remote cabins; *Open*
- 4c SETTLEMENT (part past remote parcel offering); forestry, public recreation, wildlife habitat; *Closed*
- 4e SETTLEMENT (existing subdivision); forestry, public recreation, wildlife habitat; *Closed*

MGT. UNIT 5 – MIDDLE YENTNA

- 5a FORESTRY, PUBLIC RECREATION, WATER RESOURCES, WILDLIFE HABITAT; *Open*
- 5b RESOURCE MGT. — Values: Agriculture, Forestry, Public Recreation, Settlement, Wildlife Habitat; *Open*
- 5c SETTLEMENT (existing subdivision); forestry, public recreation, wildlife habitat; *Closed*
- 5d COMMERCIAL DEV., PUBLIC REC., WILDLIFE HABITAT; forestry; *Closed*
- 5e SETTLEMENT; forestry, public recreation, wildlife habitat; *Closed prior to Disposal*
- ★5f FORESTRY, PUBLIC RECREATION, WATER RESOURCES, WILDLIFE HABITAT; *Open*

MGT. UNIT 6 – ALEXANDER CREEK

- 6a WATER RES., WILDLIFE HAB.; forestry, pub. rec., remote cabins; *Open*
- 6b RESOURCE MGT./BOROUGH LAND BANK — Values: Agriculture, Forestry, Settlement, Wildlife Habitat; *Partially Open*
- 6c SETTLEMENT; forestry, public recreation, wildlife habitat; *Closed prior to Disposal*
- ★6d PUBLIC RECREATION, WATER RESOURCES, WILDLIFE HABITAT; forestry; *Closed*

MGT. UNIT 7 – LAKE CREEK

- ★7a FORESTRY, PUBLIC RECREATION, WILDLIFE HABITAT; *Partially Open*
- ★7b PUBLIC RECREATION, WATER RESOURCES, WILDLIFE HABITAT; forestry; *Closed*
- 7c SETTLEMENT; forestry, public recreation, wildlife habitat; *Closed prior to Disposal*

MGT UNIT 8 – McDOUGAL

- 8a SETTLEMENT (past remote parcel offering); forestry, public recreation, wildlife habitat; *Closed*
- 8b RESOURCE MGT. — Values: Agriculture, Forestry, Settlement, Wildlife Habitat; *Open*

MGT. UNIT 9 – KAHILTNA RIVER

- 9a PUBLIC RECREATION, WILDLIFE HABITAT; forestry; *Open*
- 9b BOROUGH LAND BANK — Values: Commercial Development, Forestry, Public Recreation, Settlement, Wildlife Habitat; *Open*
- 9c RESOURCE MGT. — Values: Agriculture, Forestry, Settlement, Wildlife Habitat; *Open*
- 9d SETTLEMENT (past remote parcel offering); forestry, public recreation, wildlife habitat; *Closed*

MGT. UNIT 10 – PARKER LAKE

- 10a FORESTRY, PUBLIC RECREATION, WILDLIFE HABITAT; *Partially Open*
- 10b SETTLEMENT; agriculture, forestry, public recreation, settlement, wildlife habitat; *Closed Prior to Disposal*

MGT. UNIT 11 – KAHILTNA/KROTO

- ★11a FORESTRY, WATER RESOURCES, WILDLIFE HABITAT; public recreation; *Open except along Chijuk Creek*
- ★11b PUBLIC REC., WATER RESOURCES, WILDLIFE HABITAT; forestry; *Closed*
- 11c PUBLIC RECREATION; forestry, wildlife habitat; *Closed*
- 11d SETTLEMENT (past remote parcel offering); forestry, public recreation, wildlife habitat; *Closed*
- 11e SETTLEMENT; forestry, public recreation, wildlife habitat; *Closed Prior to Disposal*
- 11f WATER RESOURCES, WILDLIFE HABITAT; forestry, public recreation, remote cabins; *Open*
- 11g AGRICULTURE ; forestry, public recreation, wildlife hab.; *Closed along Chijuk Creek ;Rest of Unit: Closed Prior to Disposal*

MGT. UNIT 12 – DESHKA FLATS

- 12a RESOURCE MGT. — Values: Agriculture, Forestry, Settlement, Wildlife Habitat; *Open*
- ★12b FORESTRY, PUBLIC RECREATION, WILDLIFE HABITAT; *Open*
- 12c SETTLEMENT (existing subdivision); forestry, public recreation, wildlife habitat; *Closed*
- 12d SETTLEMENT; forestry, public recreation, wildlife habitat; *Closed Prior to Disposal*







MGT. UNIT 13 – YENTNA-SUSITNA DELTA

- 13a SETTLEMENT (existing subdivision & past remote parcel & homestead offerings); forestry, public recreation, wildlife habitat; *Closed*
- 13b FORESTRY, PUBLIC RECREATION, WILDLIFE HABITAT; *Open*
- 13c SETTLEMENT; forestry, public recreation, wildlife habitat; *Closed Prior to Disposal*
- ★13d WATER RES., WILDLIFE HABITAT; public recreation, forestry; *Closed*
- ★13e PUBLIC RECREATION, WATER RESOURCES, WILDLIFE HABITAT; forestry; *Open*
- 13f BOROUGH LAND BANK — Values: Forestry, Public Recreation, Settlement, Wildlife Habitat; *Open*
- 13g AGRICULTURE ; forestry, public recreation, wildlife habitat; *Closed Prior to Disposal*

MGT. UNIT 14 – KASHWITNA KNOBS

- 14a WATER RES., WILDLIFE HAB.; forestry, public rec., remote cabins; *Open*
- 14b AGRICULTURE; forestry, public recreation, settlement, wildlife habitat; *Closed Prior to Disposal*
- 14c SETTLEMENT; forestry, public recreation, water resources; wildlife habitat; *Closed*
- 14d PRIMARILY PRIVATE LAND
- ★14e FORESTRY, PUBLIC RECREATION, WATER RESOURCES, WILDLIFE HABITAT; *Open*

LAND STATUS

-  FEDERAL
-  STATE
-  STATE SELECTED
-  BOROUGH
-  PRIVATE (includes Native, Native selected, university, university selected, and other private lands)
-  PAST STATE AND BOROUGH LAND SALES

NOTE: This information has been generalized to show ownership in blocks of approximately 320 acres or greater. Hence, many isolated private lots are not shown, e.g., many lakes which appear public are ringed with private lots.

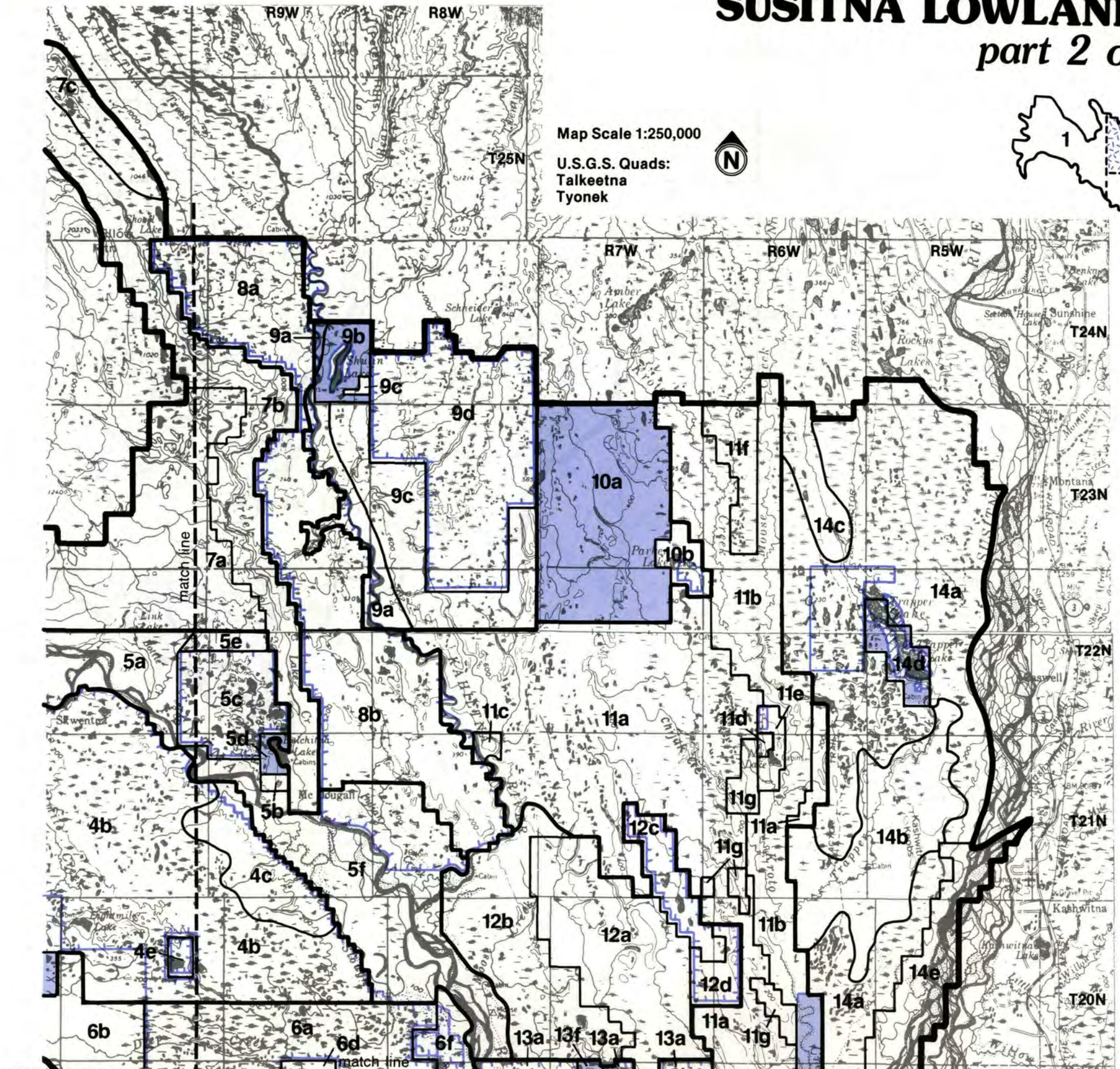
SUSITNA LOWLANDS

part 2 of 3



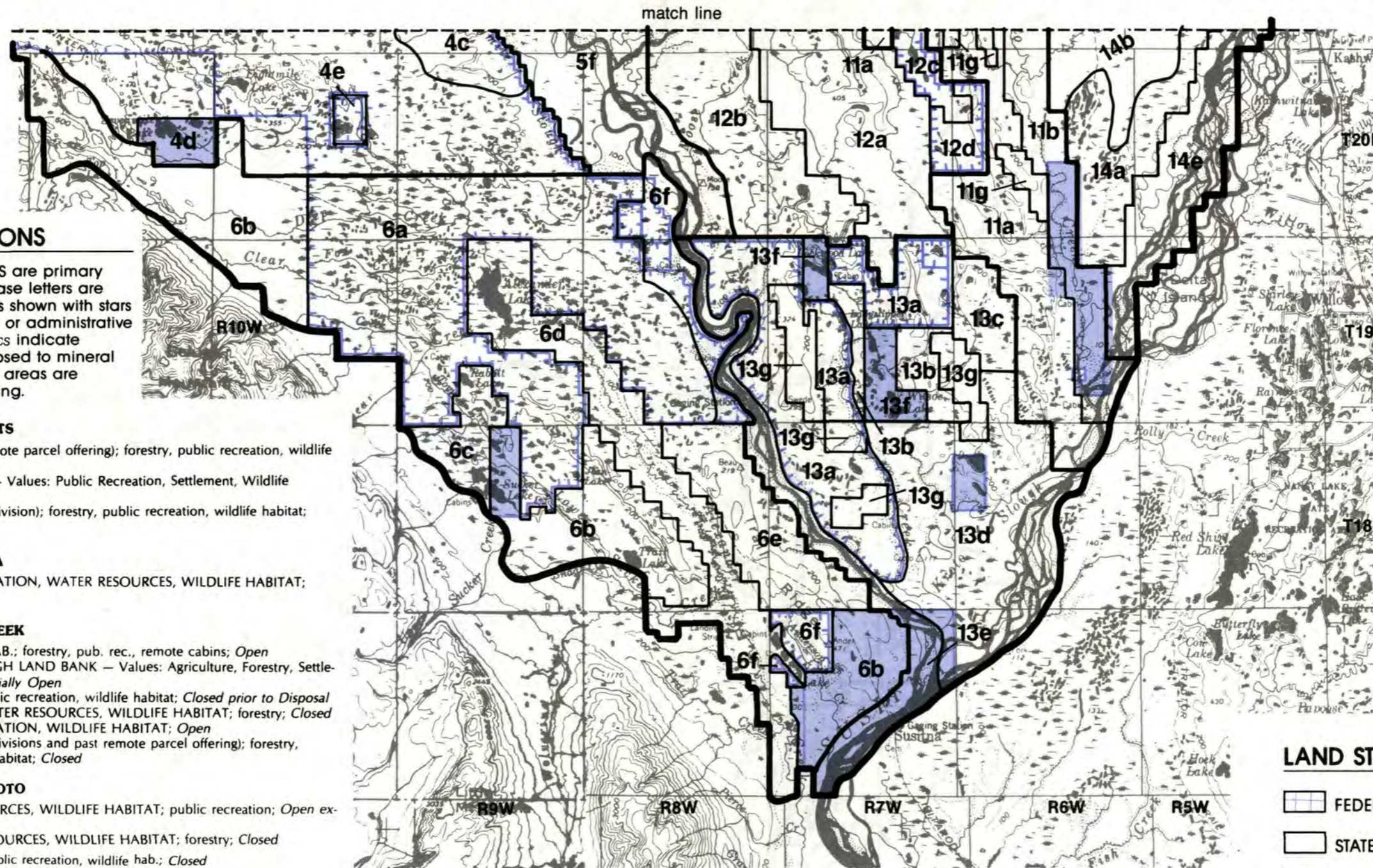
Map Scale 1:250,000

U.S.G.S. Quads:
Talkeetna
Tyonek



SUSITNA LOWLANDS

part 3 of 3



LAND USE DESIGNATIONS

Designations in CAPITAL LETTERS are primary designations; those in lower case letters are secondary designations; areas shown with stars ★ are proposed for legislative or administrative designation. Statements in *italics* indicate whether areas are open or closed to mineral location and coal leasing; all areas are available for oil and gas leasing.

MGT. UNIT 4 – SKWENTNA FLATS

- 4c SETTLEMENT (part past remote parcel offering); forestry, public recreation, wildlife habitat; *Closed*
- 4d BOROUGH LAND BANK – Values: Public Recreation, Settlement, Wildlife Habitat; *Open*
- 4e SETTLEMENT (existing subdivision); forestry, public recreation, wildlife habitat; *Closed*

MGT. UNIT 5 – MIDDLE YENTNA

- ★5f FORESTRY, PUBLIC RECREATION, WATER RESOURCES, WILDLIFE HABITAT; *Open*

MGT. UNIT 6 – ALEXANDER CREEK

- 6a WATER RES., WILDLIFE HAB.; forestry, pub. rec., remote cabins; *Open*
- 6b RESOURCE MGT./BOROUGH LAND BANK – Values: Agriculture, Forestry, Settlement, Wildlife Habitat; *Partially Open*
- 6c SETTLEMENT; forestry, public recreation, wildlife habitat; *Closed prior to Disposal*
- ★6d PUBLIC RECREATION, WATER RESOURCES, WILDLIFE HABITAT; forestry; *Closed*
- ★6e FORESTRY, PUBLIC RECREATION, WILDLIFE HABITAT; *Open*
- 6f SETTLEMENT (existing subdivisions and past remote parcel offering); forestry, public recreation, wildlife habitat; *Closed*

MGT. UNIT 11 – KAHILTNA/KROTO

- ★11a FORESTRY, WATER RESOURCES, WILDLIFE HABITAT; public recreation; *Open except along Chijuk Creek*
- ★11b PUBLIC REC., WATER RESOURCES, WILDLIFE HABITAT; forestry; *Closed*
- 11g AGRICULTURE; forestry, public recreation, wildlife hab.; *Closed along Chijuk Creek; Rest of Unit: Closed Prior to Disposal*

MGT. UNIT 12 – DESHKA FLATS

- 12a RESOURCE MGT. – Values: Agriculture, Forestry, Settlement, Wildlife Habitat; *Open*

MGT. UNIT 13 – YENTNA-SUSITNA DELTA

- 13a SETTLEMENT (existing subdivision & past remote parcel & homestead offerings); forestry, public recreation, wildlife habitat; *Closed*
- 13b FORESTRY, PUBLIC RECREATION, WILDLIFE HABITAT; *Open*
- 13c SETTLEMENT; forestry, public recreation, wildlife habitat; *Closed*

LAND STATUS

- FEDERAL
- STATE
- STATE SELECTED
- BOROUGH

Map Scale 1:250,000
 U.S.G.S. Quads:
 Talkeetna
 Tyonek