

**Alaska Strategic &
Critical Minerals Summit**

Fairbanks

November 20, 2012

Mary Sattler

**Manager, Community Development &
Sustainability**



Donlin Gold LLC



- Donlin Gold LLC is 50/50 partnership
 - Barrick Gold US
 - NOVAGOLD
- Operates under land agreements w/ ANCSA landowners
 - Calista Corporation (Mining Lease)
 - The Kuskokwim Corporation (Surface Use)
- Project office located in Anchorage
 - Bethel and Aniak regional offices
- Project studies ongoing since 1995



Alaska and the Lower 48

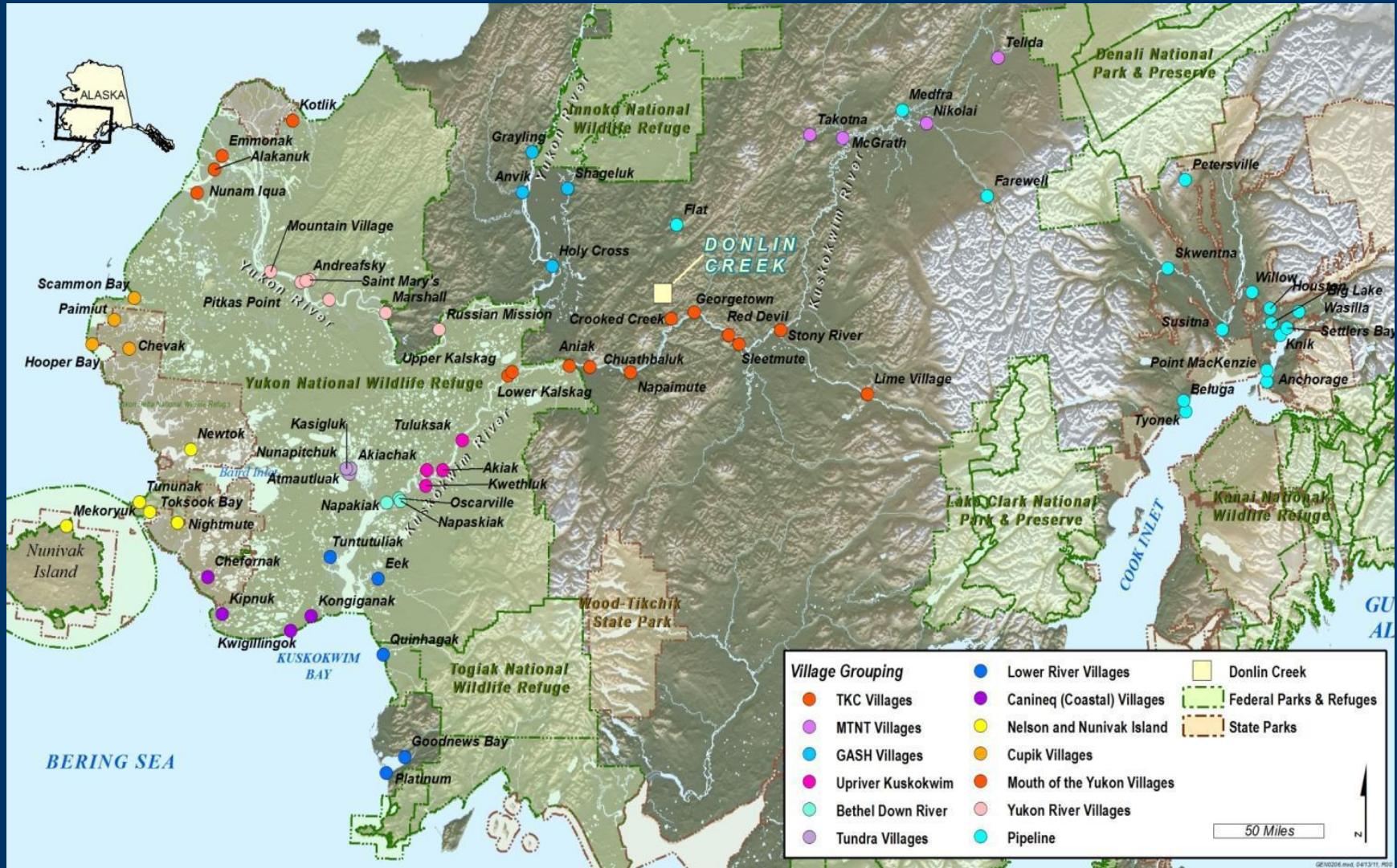


Note: Distortion of the shape of Alaska occurs due to the applied map projection. The surface area coverage is correct.

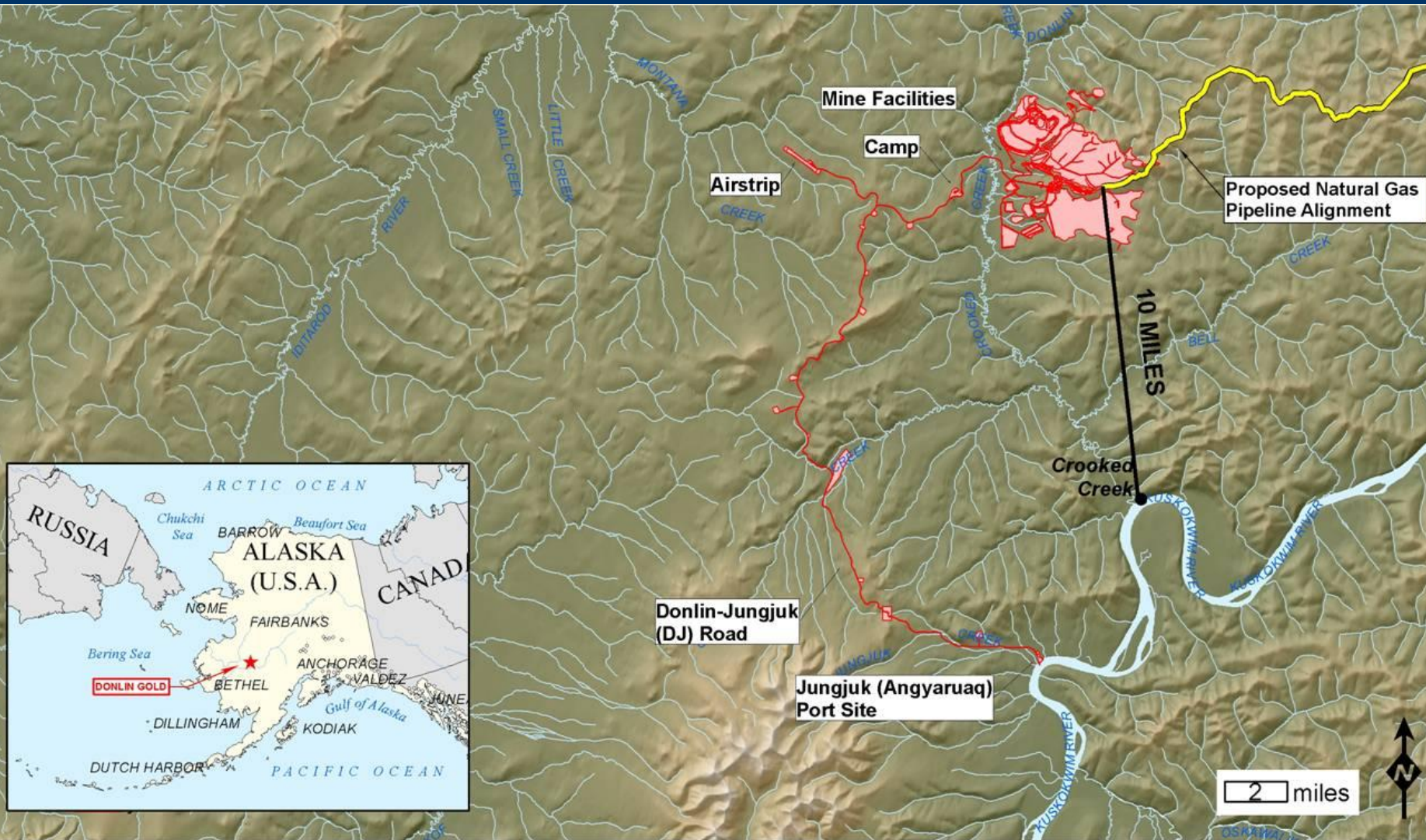
Projection: USA Contiguous Albers Equal Area Conic

GEOR196.mxd, 05/02/11, R03

Project Location & village clusters



Project Location



Project Overview



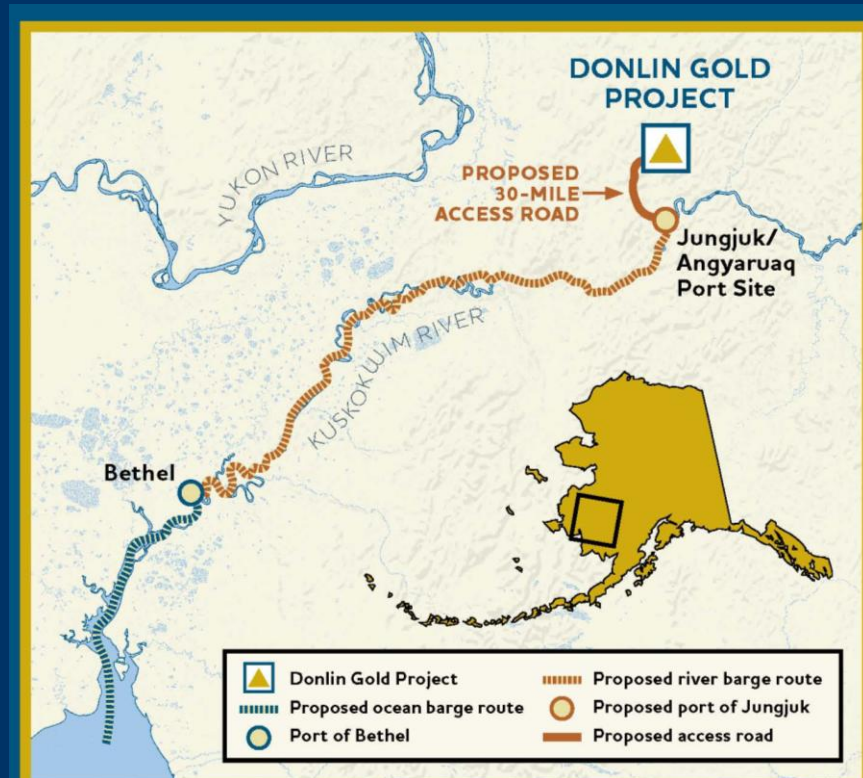
- 33+ million ounces of gold
- Open-pit
- Strip ratio 5.5:1
- 59,000 tons per day of rock processed in the mill
- Conventional ore crushing and milling followed by flotation, pressure oxidation, and carbon-in-leach circuits



Project Overview



- Two river ports (Bethel and Crooked Creek area) with 30 mile access road to site
- 314 mile buried natural gas pipeline from Cook Inlet
- 150 MW average power demand
- 5,000 ft runway
- Camp for 600 employees
- 69 haul trucks (400 ton)
- Mine life: 27+ years

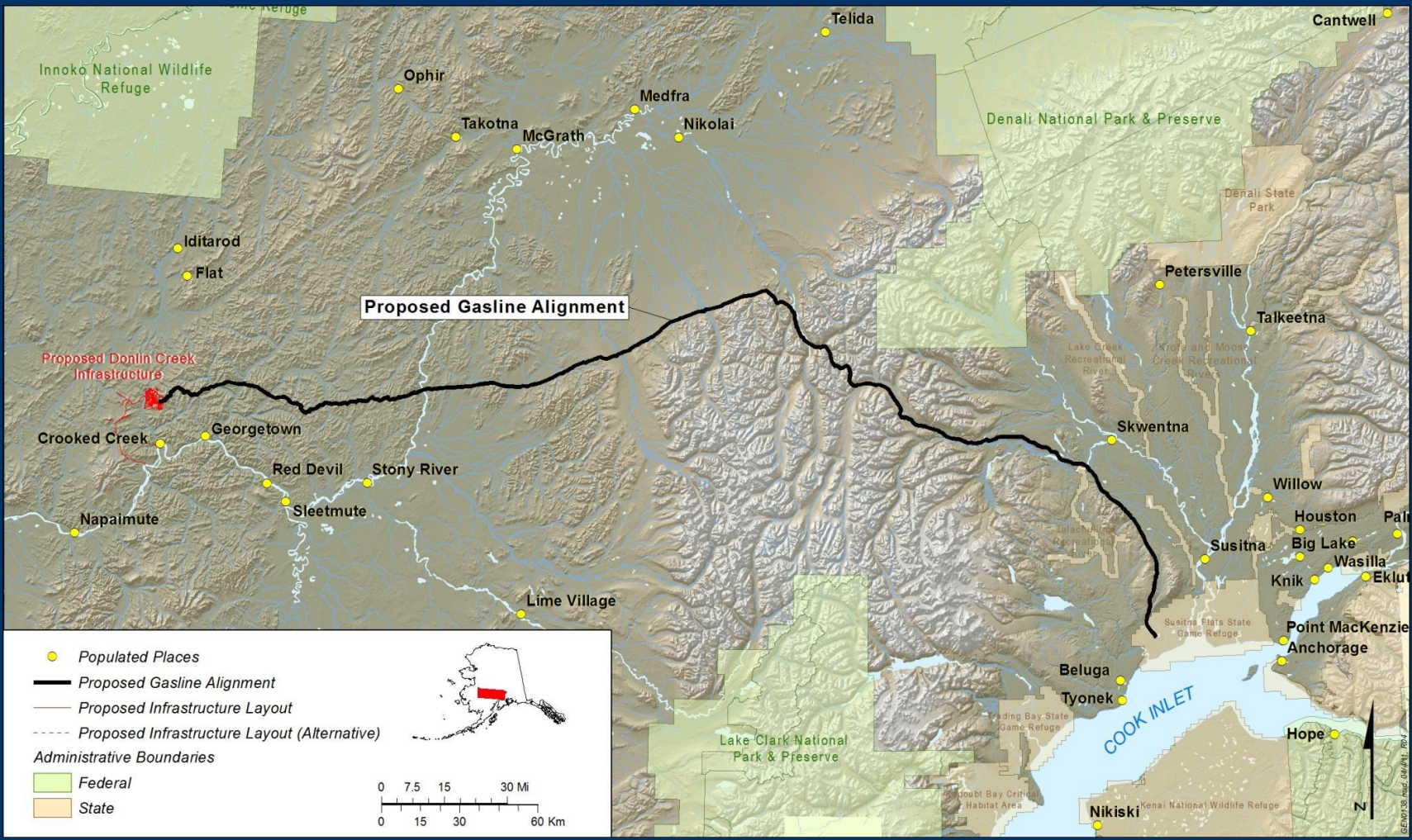


Natural Gas Pipeline



- A 14 inch steel pipeline
 - 30-35 mcf/day (approx. 50% of pipeline capacity)
- Buried along entire alignment
 - Above ground for short distances at two fault crossings
 - HDD at select water crossings and geotechnically challenging areas
 - Single compressor station
- Construction would be completed using temporary roads and crossings
 - Reclaim all construction infrastructure

Proposed Natural Gas Pipeline Route



Economic Benefits



- \$296 million spent on exploration 2005-11
- \$375 million annual payroll during construction
- \$97 million annual payroll during operations
- Royalties to Calista Corporation distributed to other ANCSA Corps. under 7(i) and 7(j) provision
- State mining license and corporate income taxes

Village Visits



Presentations to regional groups



Tours



Fish camp safety visits



Reputation for Local Hire



- Local hire is very important to Donlin Gold and will continue throughout the mine life.
- Historically, over 90% of on-site workforce have been Calista shareholders or descendants, including 9 of 10 supervisors.
- Shift schedule allows both good jobs and opportunity for maintaining subsistence way of life.



Workforce Development



- Message to students in region: Finish school!
- College or vocational training schools
- Training in region and state
- Scholarship support
 - Calista Heritage Foundation
 - TKC Scholarship
- Internship opportunities



Project Schedule



- **Permitting began July 2012**
 - 3-4 year timeline
 - Approximately 100 permits
 - US Army Corps of Engineers lead NEPA agency
 - EPA and other federal agencies are cooperating agencies
 - State permitting effort coordinated by Alaska Large Mine Permitting Team and State Pipeline Coordinators Office
 - Good coordination with permitting agencies
- **Construction: 3-4 years**
 - 3,000 construction jobs
- **Operations: 27+ years**
 - 600-1,400 jobs

Thank you

