

MANAGEMENT UNIT 9: Between Tazlina and Klutina Rivers

Background

This unit consists of a large block of state-owned and state-selected land, intermixed with large tracts of Ahtna, Inc., land between the Tazlina and Klutina Rivers. About half the land in this unit has been selected by the state and Ahtna, Inc.

The area is used for hunting and trapping. Although the area has relatively good stands of timber, these resources are generally too far from roads or communities to be harvested for local use. Settlement and recreation opportunities are limited due to poor soils, inaccessibility, and lack of amenities.

Management Intent

The entire area should be retained in public ownership and managed for multiple use with emphasis on wildlife habitat, forestry, and dispersed recreation. The management unit is open to mineral entry, except for a part of Kaina Creek that crosses through the unit. Land within 200 feet of Kaina Creek and the creek itself is closed to mineral location to protect salmon spawning areas.

Subunits 9A and 9C contain important trumpeter swan nesting areas. These habitats will be protected. (See management guidelines below.)

Forestry has been designated as one of the primary uses of much of this unit because of extensive forest resources. The lack of good access to this area and relatively unknown potential for commercial timber harvest make forestry activities unlikely in the near future. The resources should be retained for future use.

Forestry is specifically allowed in areas identified as important trumpeter swan nesting habitat in subunits 9A and 9C. Seasonal restrictions, such as requirements for winter harvest, and site specific mitigation measures will ensure protection of swans while allowing for timber harvest.

Management Guidelines

Trumpeter Swan Nesting and Concentration Areas. The guidelines for Documented High Value Trumpeter Swan Nesting and Concentration Areas on page 2-10 apply to subunits 9A and 9C. The Alaska Legislature should consider designating this area as a Critical Habitat Area to retain the land in public ownership and provide greater long term protection to the trumpeter swans.

The complete set of management guidelines is presented in Chapter 2. Any of the guidelines could apply to uses within this management unit; however, guidelines that are most likely to apply are:

- Fish and wildlife habitat
- Public access

LAND USE DESIGNATION SUMMARY

MANAGEMENT UNIT: 9 - Between Tazlina/Klutina Rivers

SUBUNIT	LAND OWNERSHIP (GENERALIZED)	LAND USE DESIGNATIONS				PROHIBITED SURFACE USE(S)*	COMMENTS
		SURFACE		SUBSURFACE			
		PRIMARY USE(S)	SECONDARY USE(S)	LOCATABLE MINERALS	LEASEABLE MINERALS		
9A	State	Wildlife habitat	Forestry	Open to mineral entry	Available for leasing	Grazing, Most land leases, ² Land offerings, Remote cabins	Swan guidelines apply
9B	State, State-Native selections	Forestry Recreation Wildlife habitat		Open to mineral entry	Available for leasing	Land offerings, Remote cabins	
9C	State, State-Native selections	Wildlife habitat	Forestry	Open to mineral entry	Available for leasing	Grazing, Most land leases, ² Land offerings, Remote cabins	Swan guidelines apply
9D	State selections	Wildlife habitat		Open to mineral entry	Available for leasing	Land offerings, Remote cabins	

*¹ Other uses such as material sales, land leases, or permits, that are not specifically prohibited may be allowed. Such uses will be allowed if consistent with the management intent statement, the management guidelines of this unit, and the relevant management guidelines listed in Chapter 2.

*² See management guidelines

RESOURCE INFORMATION SUMMARY

Management Unit 9 - Between Tazlina and Klutina Rivers

RESOURCE	SUBUNIT			
	9A	9B	9C	9D
Fish	salmon - s steelhead-s	salmon steelhead	steelhead	salmon - s/r/m steelhead - s
Forestry	high; moderate conif.	high; moderate conif. & decid.	moderate conif.	moderate conif. and decid.
Historic-Cultural	unknown	unknown	unknown	unknown
Minerals	outside of known mineral terraces	low	outside of known mineral terraces	low
Oil and Gas	low	low	low	unknown
Recreation	high; St. Anne Lake	high	high	low
Settlement Suitability	low	low	low	low
Wildlife	A-1 habitat - trumpeter swan habitat, important fall staging area on lake	B-2 habitat; A-2 habitat - Dall sheep, moose	A-1 habitat - trumpeter swans	B-2 habitat; A-2 habitat - Dall sheep, moose

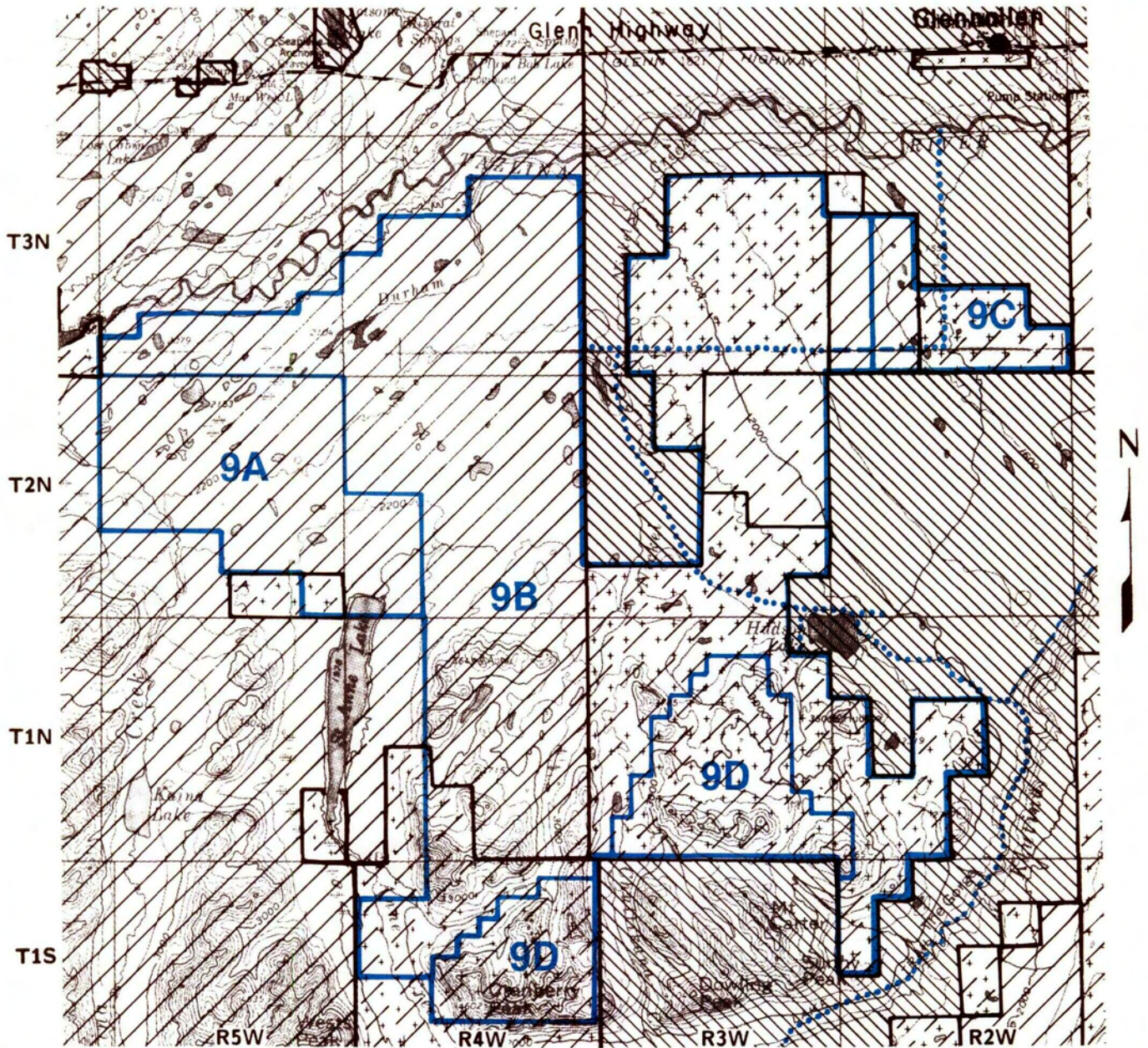
Important Trails:

Subunit 9B: 17(b) easement in T3N, R3W provides access from Tazlina to areas south of Tazlina River; trail and easement are out of alignment in T3N, R2W, Sec. 3, 10
17(b) easement from Klutina Lake road around Hudson Lake to Nickel Creek
Subunit 9C: 17(b) easement in T3N, R2W from Tazlina River south 5 miles

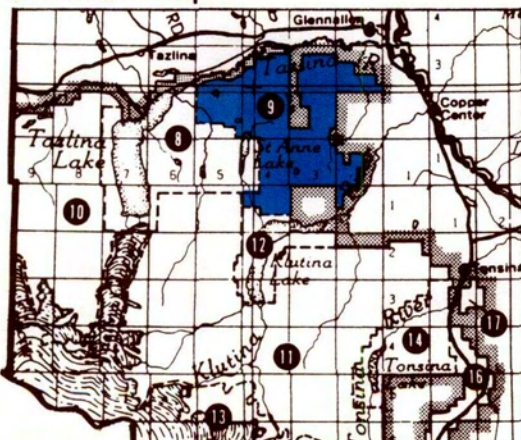
For definitions of ratings, see glossary. For more detailed information on any resources, see resource elements published under separate cover.

MANAGEMENT UNIT 9

Between Tazlina River & Klutina River


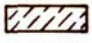

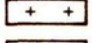





Location Map



U.S.G.S. Quads:
Gulkana
Valdez

Map scale:
1:250,000

-  State Owned
-  State Selected
-  Native/Private Owned
-  Native Selected
-  Federal
-  Trails on public lands
-  Public easements to state land - ANCSA 17(b)

Map shows approximate location of easements to state land and major trails across state land. Portions of trails may cross private lands. See appendix D.