

## **MANAGEMENT UNIT 17: Tonsina Plateau**

### **Background**

This management unit is a 10-square-mile tract of federal (BLM) land that the state should select. The land is a relatively flat plateau about 400 feet higher than the Tonsina River. An old road that runs through the area is in good condition from the south, but virtually impassible from the north. The trail up Bernard Creek towards Kimball Pass is important for hunters and hikers.

### **Management Intent**

The state will select this land and offer approximately 2,000 acres for private ownership. Remaining state land will be managed for multiple use with emphasis on forestry, public recreation, and wildlife habitat. The Bernard Creek valley (management subunit 17B) will be retained in state ownership for multiple use and to ensure access along the Kimball Pass trail. Most of the area will become open to mineral entry except Bernard Creek, which would be closed to mineral location to protect salmon spawning areas. Land offerings will be closed to mineral entry before disposal. Land closer to the road should be offered for private ownership before more remote parcels because the land is within the Tonsina walk-in area, which is closed to use of vehicles for hunting.

### **Management Guidelines**

**Bernard Creek - Kimball Pass Trail.** This trail will be retained in state ownership. It is used by hunters (particularly for goat and sheep hunting), hikers, cross country skiers, and snowmobilers. Part of the trail lies across Chugach Alaska, Inc., land. This portion of the trail has been reserved for public use by a 17(b) easement and should be clearly signed.

**Mineral Closures.** Land within 200 feet of Bernard Creek will be closed to mineral location.

The complete set of management guidelines is presented in Chapter 2. Any of the guidelines could apply to uses within this management unit; however, guidelines that are most likely to apply are:

- Fish and wildlife habitat
- Forestry
- Settlement
- Transportation
- Public access
- Trail management

# LAND USE DESIGNATION SUMMARY

## MANAGEMENT UNIT: 17 - Tonsina Plateau

SUBUNIT	LAND OWNERSHIP (GENERALIZED)	LAND USE DESIGNATIONS				PROHIBITED SURFACE USE(S)*	COMMENTS
		SURFACE		SUBSURFACE			
		PRIMARY USE(S)	SECONDARY USE(S)	LOCATABLE MINERALS	LEASEABLE MINERALS		
17A	Federal-BLM	Settlement	Forestry Wildlife habitat	Open, except disposal area closed before offering	Available for leasing	Remote cabins, Trapping cabins in land offering	State will make selection. Estimated net land offering of 2000 acres
17B	Federal-BLM	Forestry Public recreation Wildlife habitat		Open to mineral entry except Bernard Creek	Available for leasing	Land offerings, Remote cabins	State will select

\* Other uses such as material sales, land leases, or permits, that are not specifically prohibited may be allowed. Such uses will be allowed if consistent with the management intent statement, the management guidelines of this unit, and the relevant management guidelines listed in Chapter 2.

3-116

ACE 6329505

# RESOURCE INFORMATION SUMMARY

## Management Unit 17 - Tonsina Plateau

RESOURCE	SUBUNIT	
	17A	17B
Fish	none docum.	salmon - s/r/m steelhead
Forestry	moderate conif.	moderate conif.
Historic-Cultural	WOMCAT telegraph trail in area	historic trail
Minerals	outside of known mineral terraces	outside of known mineral terraces
Oil and Gas	unknown	unknown
Recreation	high for Kimball Pass trail	high for Kimball Pass trail
Settlement Suitability	moderate to high	low; unsuitable
Wildlife	B-2 habitat	B-2 habitat

### Important trails:

Subunit 17A: Old road passes through western part of subunit 17A; road impassable at north end, but in good condition from south; leaves Richardson Hwy. at Milepost 75.

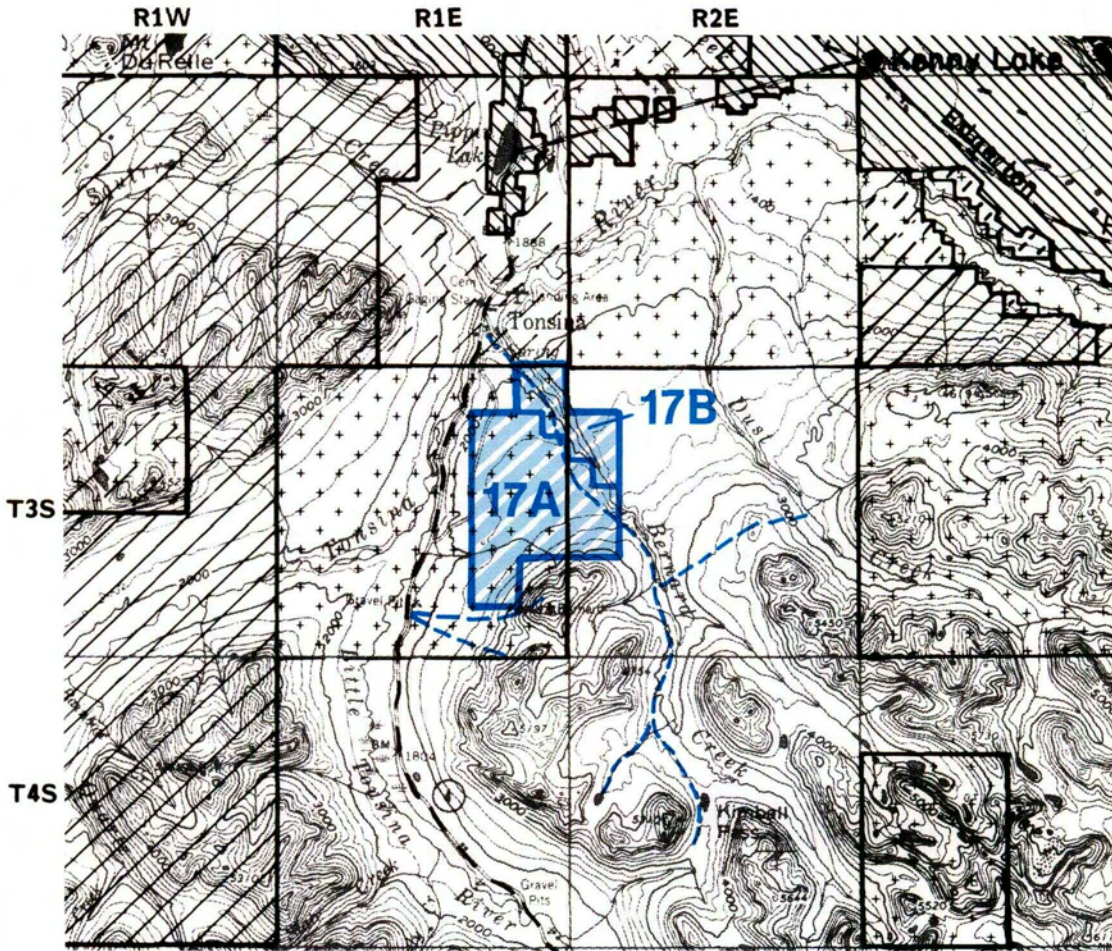
Reserved via 17(b) easement across Chugach Alaska lands from the south end.

Subunit 17B: Bernard Creek - Kimball Pass trail; reserved via easement across Chugach Alaska land. Used by hunters, hikers, snowmachiners, and skiers.

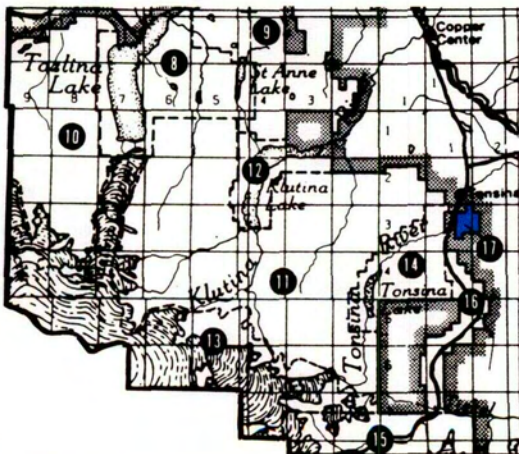
For definitions of ratings, see glossary. For more detailed information on any resources, see resource elements published under separate cover.

# MANAGEMENT UNIT 17

## Tonsina Plateau




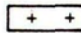





Location Map



U.S.G.S. Quad:  
Valdez

Map scale:  
1:250,000

-  State Owned
-  State Selected
-  Native/Private Owned
-  Native Selected
-  Federal
-  Proposed State Selections
-  Trails on public lands

Map shows approximate location of easements to state land and major trails across state land. Portions of trails may cross private lands. See appendix D.