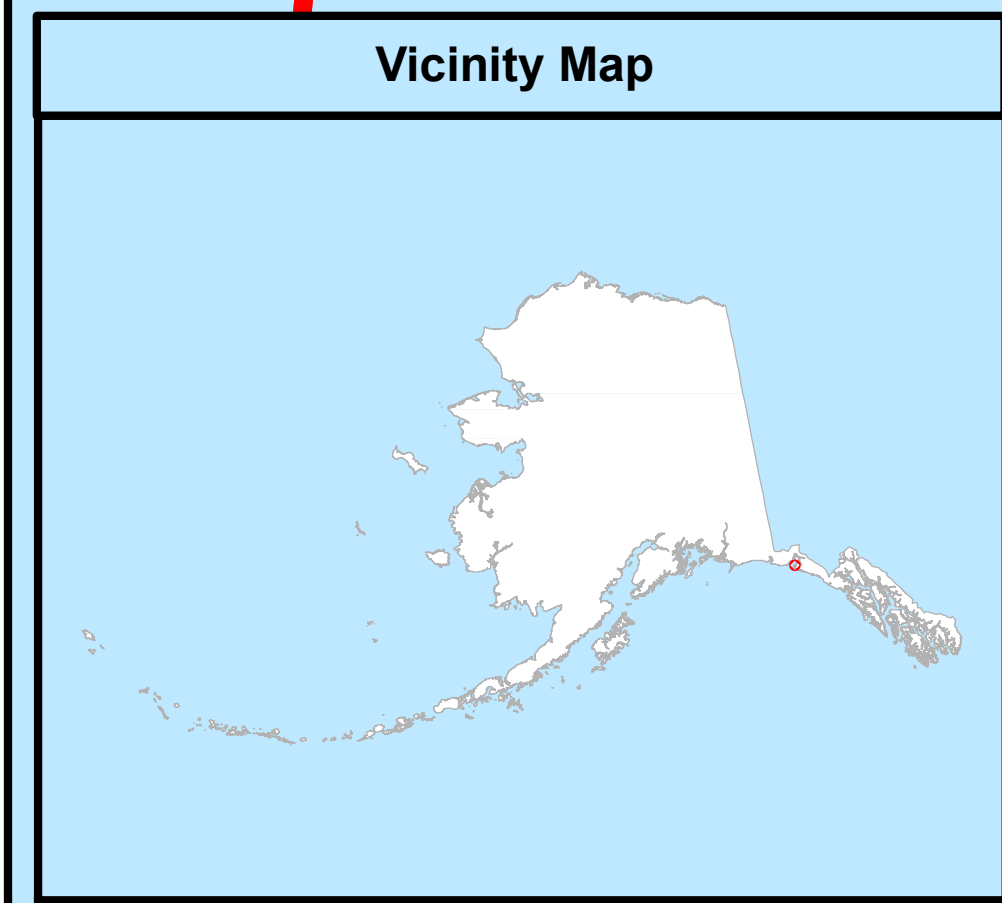
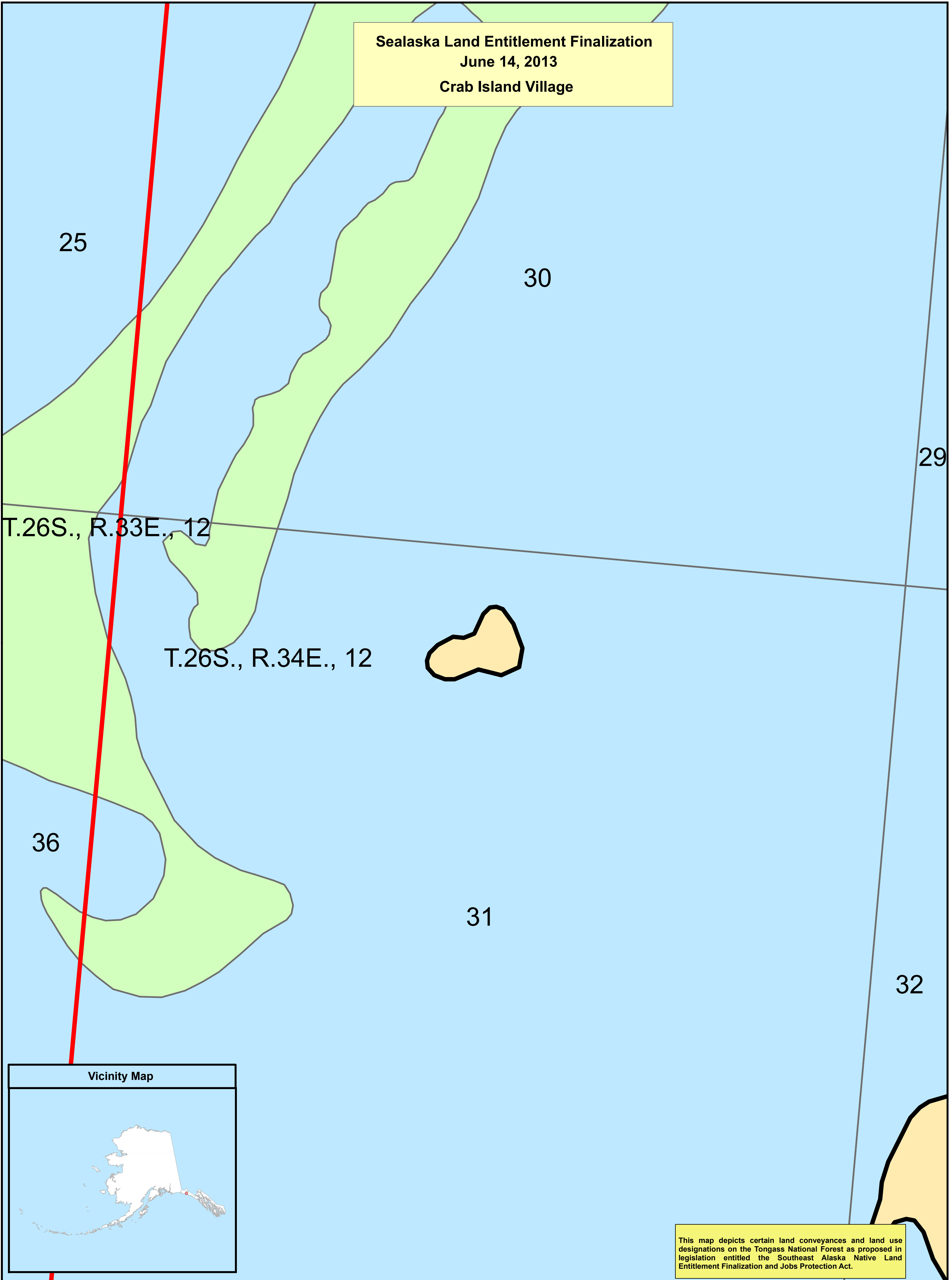


**Sealaska Land Entitlement Finalization
June 14, 2013
Crab Island Village**



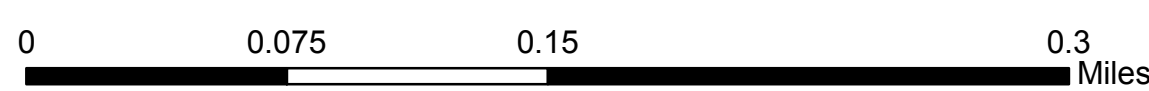
This map depicts certain land conveyances and land use designations on the Tongass National Forest as proposed in legislation entitled the Southeast Alaska Native Land Entitlement Finalization and Jobs Protection Act.

References
This map was prepared at the request of the Senate Committee on Energy and Natural Resources.

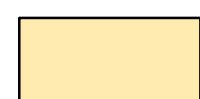
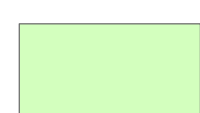
Synopsis: Southeast Alaska Native Land Entitlement Finalization and Jobs Protection Act - Authorizes Sealaska Corporation, the Regional Corporation for southeast Alaska, to select and receive conveyance of its remaining land entitlement under the Alaska Native Claims Settlement Act (ANCSA), and establishes additional conservation areas on the Tongass National Forest.

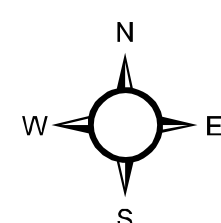
Disclaimer
The USDA Forest Service makes no warranty, expressed or implied regarding the data displayed on this map, and reserves the right to correct, update, modify, or replace this information without notification.

Map Date: June 14, 2013



Legend

-  Sealaska Selections Sec 3 (b) (1)
-  National Forest System Land



Map 12 of 18

**Southeast Alaska Native Land Entitlement Finalization
and
Jobs Protection Act**

Legislative Map: Senate Bill 340

**Crab Island Village
4 Acres**



U.S. Forest Service - Alaska Region
Tongass National Forest



U.S. Congressional District, Alaska

Copies of this map are available for public inspection in the Office of the Regional Forester, Alaska Region, Juneau, Alaska.