

Bureau of Land Management Land Use Planning and Other Updates

BLM Alaska

Serena Sweet, Supervisory Planning and Environmental Coordinator

Lesli Ellis-Wouters, Chief Office of Communications

Citizens' Advisory Commission on Federal Areas

May 6, 2016



Alaska

Topics

- Land Use Planning Process Overview
- Stakeholder involvement
- Eastern Interior RMP
- Central Yukon RMP
- Bering Sea-Western Interior RMP
- Other BLM Updates
- Questions



Alaska

What is a Land Use Plan?

BLM Mission:

Sustain the health, diversity, and productivity of the public lands for the use and enjoyment of present and future generations.

Land Use Plans:

- Long-range (approximately 20 years)
- Comprehensive (consider all natural resources)
- Make resource decisions (protection, special designations)
- Landscape-level (versus specific proposed projects)
- Manage change over time and resolve issues that exist
- Replace existing plans that do not manage current issues



BLM

Alaska

What a LUP does **NOT** do

Land Use Plans do not:

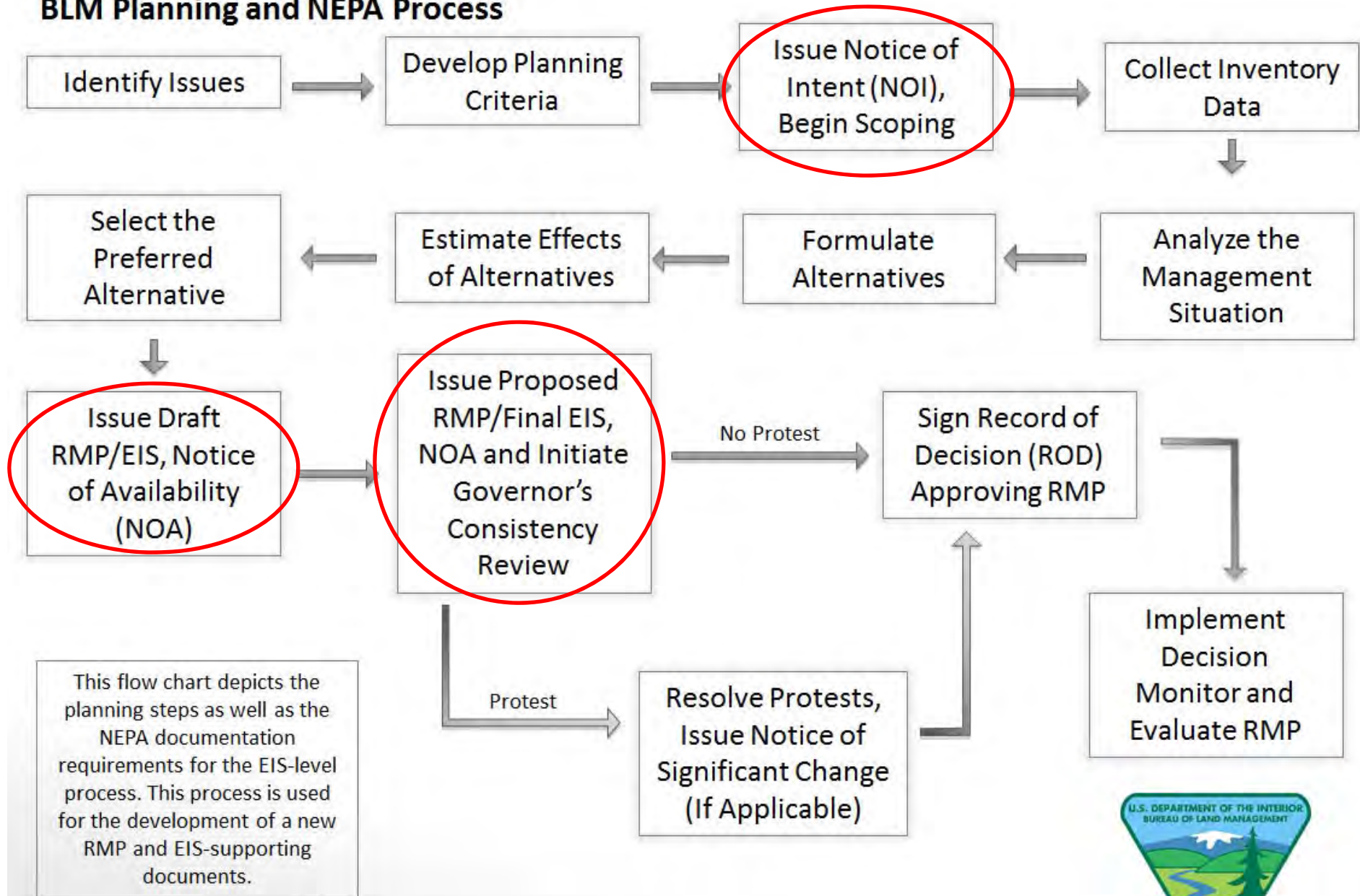
- Lift existing withdrawals (makes recommendations only)
- Affect land conveyances
- Change hunting and fishing regulations
- Resolve R.S. 2477 rights-of-way
- Designate or revoke ANCSA 17(b) easements
- Increase or fund law enforcement efforts
- Affect predator control on BLM-managed lands
- Make site-specific project decisions:
 - BSWI will not make decisions related to Donlin
 - CY will not make decisions related to Ambler Road
 - EI will not make decisions on Victoria Creek Road



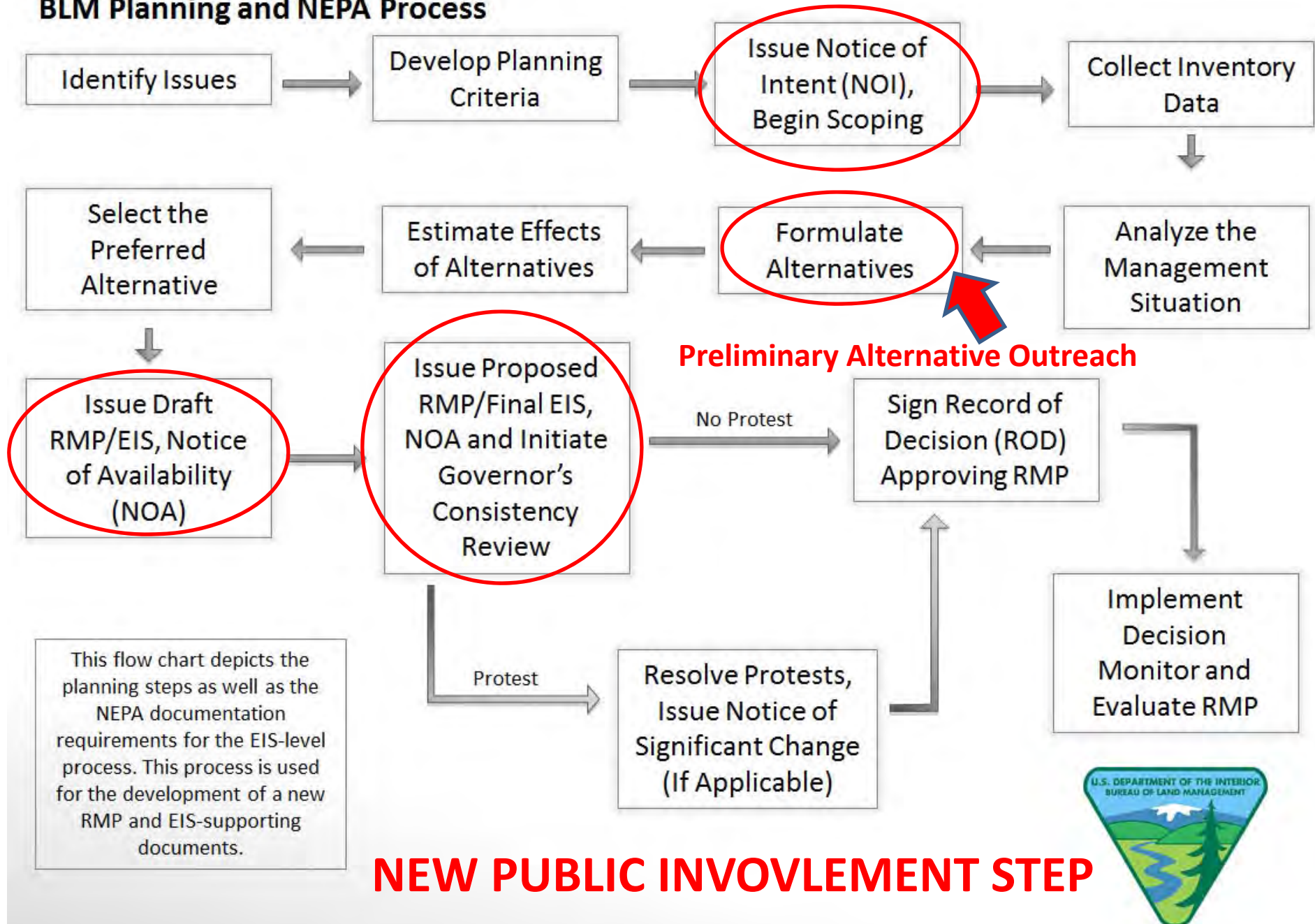
BLM

Alaska

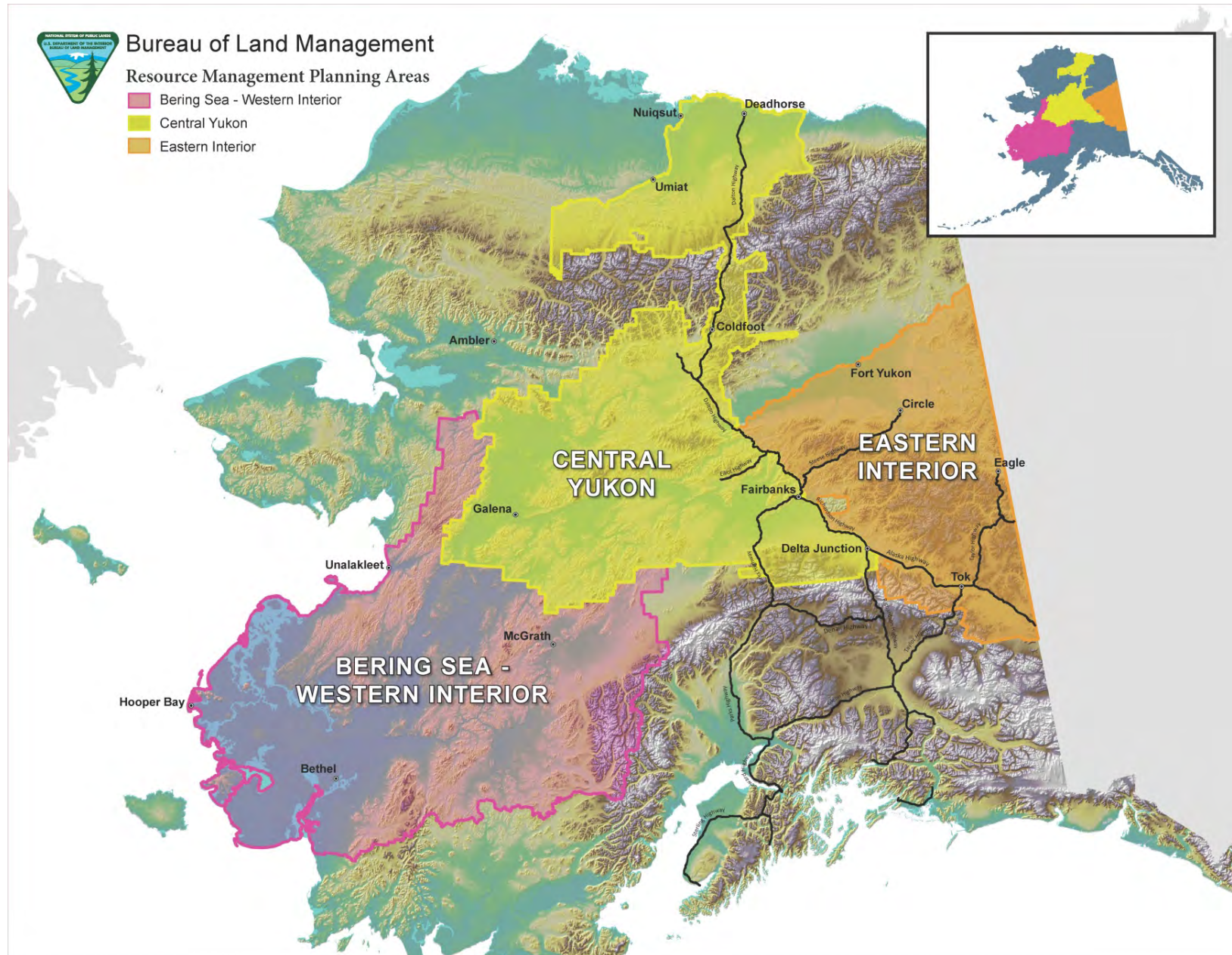
BLM Planning and NEPA Process



BLM Planning and NEPA Process



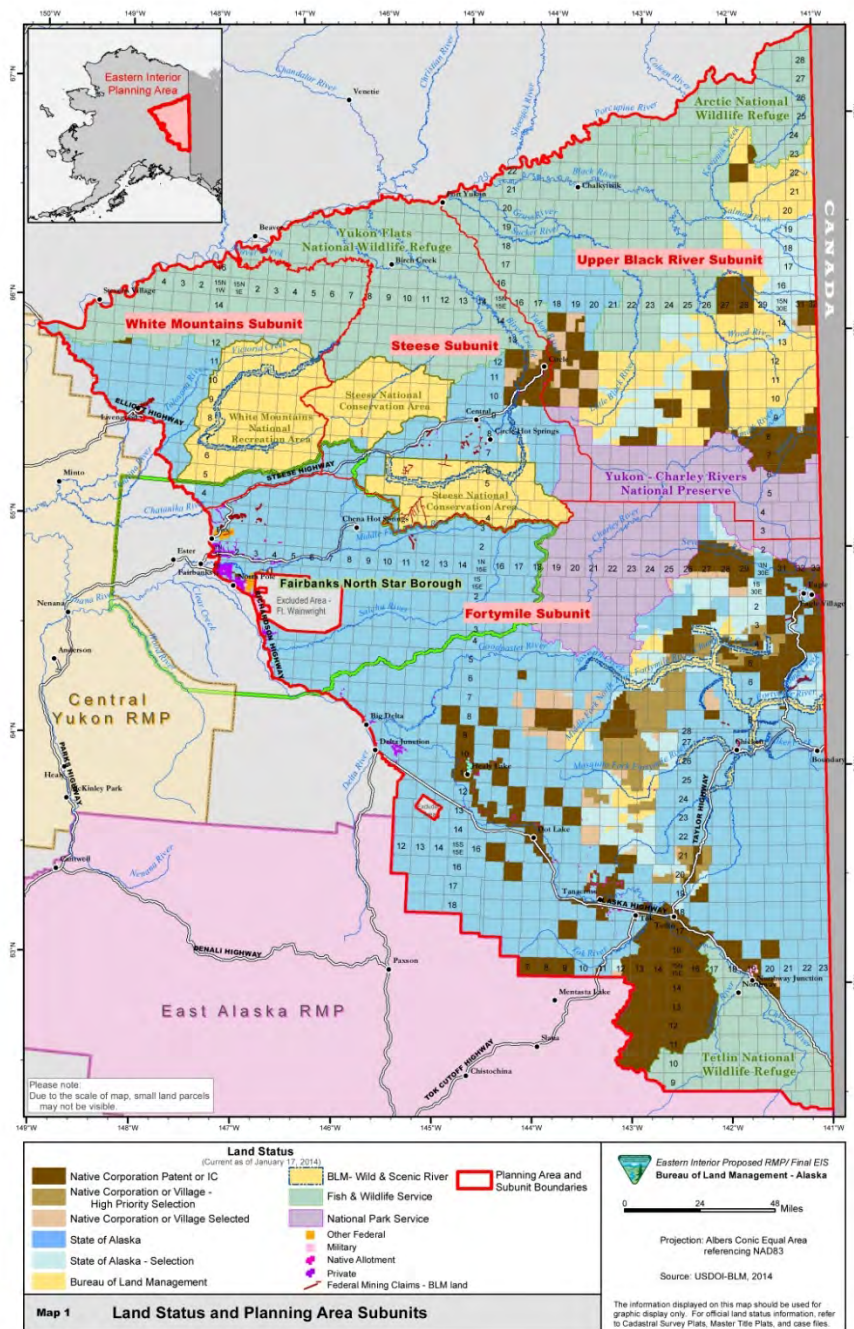
Ongoing BLM Alaska Planning Efforts



Alaska

BLM

Eastern Interior RMP



Cooperator Review

March-April
2016

Release PRMP/FEIS

June 2016

Protest / Governor
Consistency
Review

June-July 2016

Resolve protests /
Consistency issues

August-
October 2016

Issue RODs

December
2016

BLM

Alaska



Eastern Interior RMP

No hunting guide permit allocation determinations were made in the RMP.

Further steps for stakeholder input:

- State is currently reviewing as cooperating agency
- Protest period
- Governor's consistency review
- Supplemental rule process to implement travel management and camping stay limits
- Step down recreation and travel management plans within five years



Alaska

BLM

BLM



24 remote communities

Many other land owners adjacent to BLM lands



PROCESS MILESTONES

PUBLIC PARTICIPATION

Notice of Intent to Prepare RMP	2013	Notice published in Federal Register
Public Scoping	2013-2014	180-day Public Scoping Period Public Scoping Meetings/Online Open House Tribal Consultations
ACEC Nomination Period	2014	120-day Nomination Period
Preliminary Alternatives	2015-2016	← <i>We are here now</i>
Preliminary Alternatives Outreach	2016	120-day Public Comment Period Public Meetings/Online Open House Tribal Consultations
Refine Alternatives	2016	
Prepare Draft RMP	2016-2017	
Notice of Availability of Draft RMP/EIS	2017	Notice published in Federal Register 90-day Public Comment Period Public Meetings/Online Open House Tribal Consultations, ANILCA 810 Hearings
Revise RMP	2017-2018	
	2018	Notice published in Federal Register Online Availability 30-day Protest Period 60-day Governor's Consistency Review
Record of Decision and Approved RMP	2019	Online Availability

Central Yukon
Resource Management Plan



Alaska

BLM

PLANNING ISSUES FROM SCOPING

- Utility Corridor Withdrawal – Public Land Order 5150
- Access and Travel Management
- Invasive Species
- Minerals Management and Withdrawals
- Sand and Gravel
- Recreation and Visitor Services on Dalton Highway
- Subsistence
- Management of Wildlife Habitat



Special Recreation Permit Issues

- 9 commercial hunting guides, 5 in the Dalton Highway area
- Concern about preserving quality of the hunts; conflicts between commercial operators
- Subsistence users in Wiseman concerned BLM is permitting too much commercial take of Dall sheep on BLM lands in Guide Use Area 24-03
- Cumulative impacts of commercial guided, resident, and subsistence hunting on Central Brooks range sheep
- Central Yukon RMP still early in the process. Will be going out to public with draft alternatives in late 2016
- State of Alaska is a cooperating agency on the RMP



Utility Corridor Withdrawal – PLO 5150

- State of Alaska has selected lands in the Utility Corridor and would like title to these lands
- BLM must modify PLO 5150 before lands can be conveyed to State
- Conveying lands to the State will change how subsistence is managed
- Reduced BLM presence along the Dalton Highway corridor



Bering Sea-Western Interior Resource Management Plan



The Anchorage Field Office vision for the Bering Sea-Western Interior planning area is to sustain the diverse and intact ecosystems that support traditional subsistence lifestyles while recognizing the importance of BLM lands to rural economies.

BLM

Alaska





BSWI Planning Process



PROCESS MILESTONES

PUBLIC PARTICIPATION

Notice of Intent to Prepare RMP

2013

180-day Public Scoping Period
Public Scoping Meetings/Online Open House
Tribal Consultations

1) Public Scoping

2013-
2014

2) ACEC Comment Period

2014

120-day Nomination Period

Develop Preliminary Alternatives

2015

3) Preliminary Alternatives Outreach

2015

120-day Public Comment Period
Public Meetings/Online Open House
Tribal Consultations

We are here now → Refine Alternatives

2015-2016

Prepare Draft RMP

2016-2017

4) NOA of Draft RMP/EIS

2017

Notice published in Federal Register
90-day Public Comment Period
Public Meetings/Online Open House
Tribal Consultations
ANILCA 810 Hearings

Revise RMP

2017-2018

5) NOA of Proposed RMP/Final EIS

2018

Notice published in Federal Register
Online Availability
30-day Protest Period
60-day Governor's Consistency Review

Protest Period

Governor's Consistency Review

Record of Decision and Approved RMP

TBD



3 MOST RECENT PLANNING MILESTONES

1. Scoping 2013-2014 (180-days)
2. ACEC Comment & Nomination Period May – Aug 2014 (120 days)
3. Preliminary Alternatives Outreach Feb – June 2015 (100 days)
 - Goal 1** - Input on Draft Preliminary Alternative Concepts.
 - Goal 2** - Input on Inventories/Reports & Next Steps:
 1. Visual Resource Inventory
 2. Lands with Wilderness Character Inventory Report
 3. Watershed Analysis Framework Process
 4. Wild and Scenic River Eligibility Report
 5. ACEC Report on Relevance and Importance Criteria

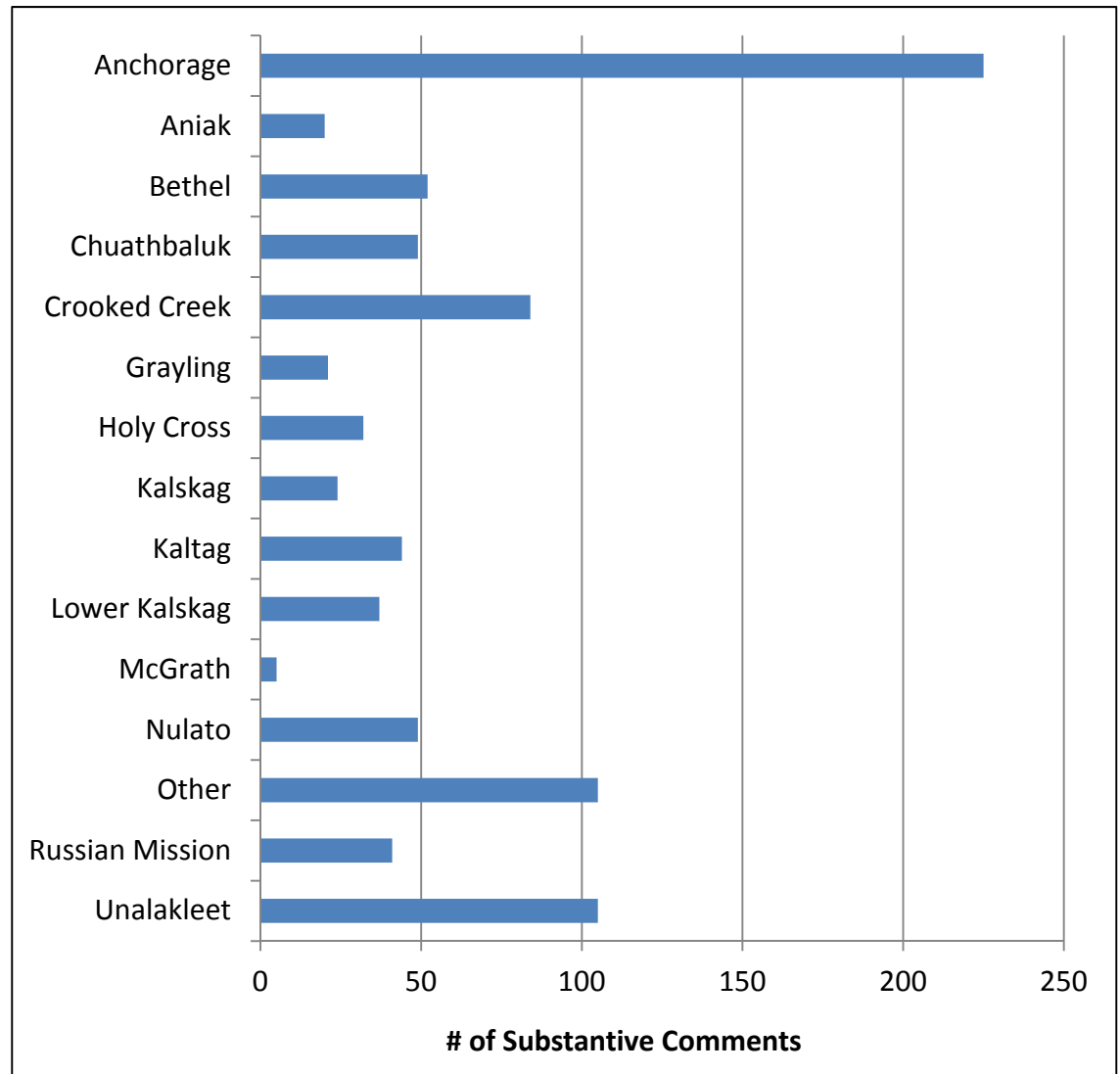
Bering Sea - Western Interior



Resource Management Plan



COMMUNITY COMMENT COUNT



Bering Sea - Western Interior



Resource Management Plan



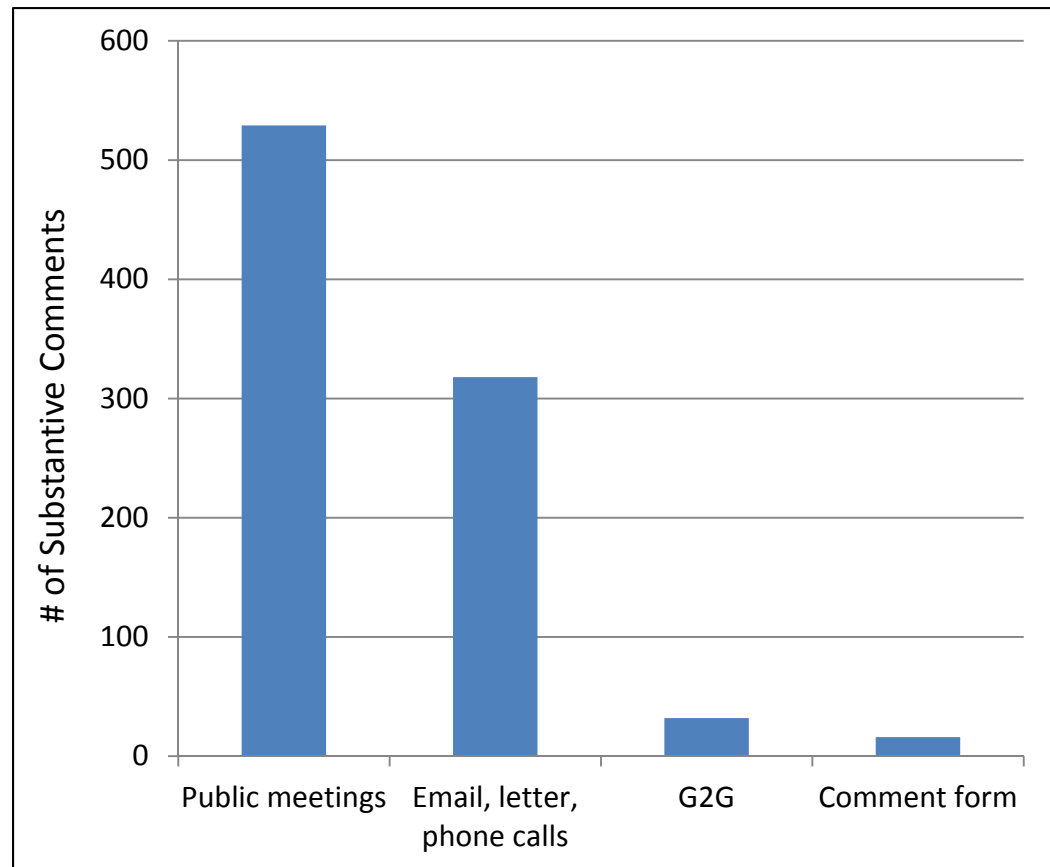
PRELIM ALTS COMMENTS RECEIVED

Affiliation	Number of Submissions	Commenters
State	2	Alaska Department of Natural Resources, Citizens' Advisory Commission on Federal Areas
Local	1	City of Nikolai
Tribal	4	Holy Cross Tribe, Nikolai Edzeno Village Council (2 submissions), Koyukuk Tribal Council
ANCSA Regional Corporation	4	Calista Corporation, Cook Inlet Region, Inc., Doyon Limited, The Kuskokwim Corporation
Industry Organizations	3	Alaska Miners Association, Donlin Gold, Resource Development Council
Interest Groups	4	Alaska Track Association, Association of Village Council Presidents, The Center for Water Advocacy, The Pew Charitable Trusts
Individuals	14	Unidentified (3 submissions), Anchorage (3 submissions), Unalakleet (2 submissions), Aniak (1 submission), Chuathbaluk (1 submission), Fairbanks (1 submission), Grayling (1 submission), Nikolai (1 submission), Russian Mission (1 submission)
Total	32	



893 SUBSTANTIVE COMMENTS

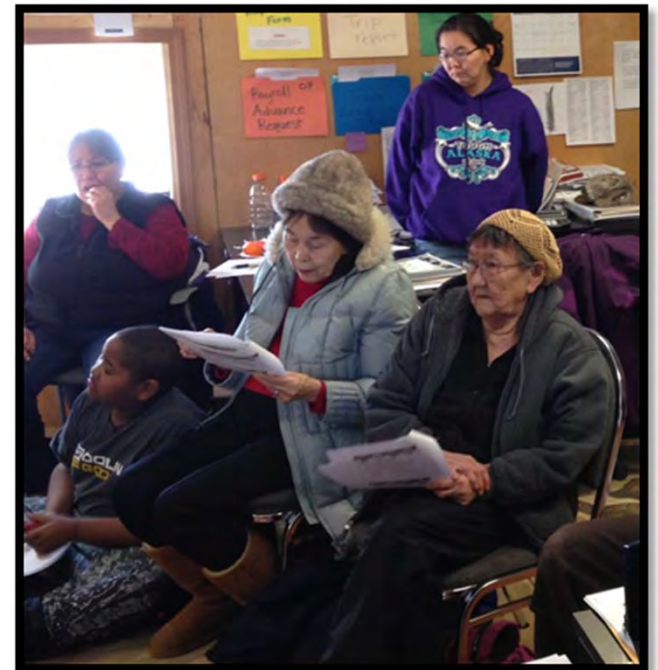
- Public meetings— ~ 60%
- Email, letter, phone calls— ~35%
- Government-to-government meetings— ~ 4%
- Comment form— ~ 2%





MOST FREQUENT ISSUE CATEGORIES

- Issue 11: Travel Management (118 comments)
- Issue 23: Areas of Critical Environmental Concern (90 comments)
- Issue 4: Forestry (70 comments)
- Issue 14: Minerals and Mining (65 comments)
- Issue 1: Fish and Aquatic Resources (60 comments)
- Issue 19: BLM Land Ownership, Management, and Use (59 comments)
- Issue 2: Wildlife (58 comments)
- Issue 27: Subsistence (58 comments)
- Issue 22: Wild and Scenic Rivers (49 comments)





SPECIAL RECREATION PERMITS (SRPs)

Permit Activity (number of permits)	Recreation Visits* in 2013
Dog sled rides (1)	8
Big game hunting guide-outfitting (13)	120
Snowmobile racing (1)	265
Dog sled racing (2)	290
Human-powered endurance events (1)	50

****One entrance per individual per day to BLM public lands is a reportable visit***



2015 ALTERNATIVE *CONCEPTS*

Outfitter-Guide & Transporter - related Goals & Objectives

- 1) Established an allocation limit for commercial big game guide-outfitters within each Guide Use Area of the planning unit.
- 2) Establish a buffer zone between guide-outfitter operating areas and rural communities.



2015 ALTERNATIVE **CONCEPTS**

Transporter Operations

Alternative #1: Require all transporters to be under a SRP (e.g., air taxis, boat operators, horseback).

Alternative #2: PUBLIC suggests feedback and submit **written comment** (Spring 2015)

Alternative #3: All transporters, who are not Guide Outfitters, would NOT be required to obtain a SRP if requirements (stated within 43 CFR 2932.12(a)) are met... the BLM may waive a permit requirement when the use begins and ends on non-public lands or related waters, traverses less than a total of 1 mile of public lands or 1 shoreline mile, and poses no threat of significant damage to public land or water resource values.

Require licensed transporters operating on BLM- managed lands within the planning area to have a SRP when they provide passengers with gear, equipment, and/or guiding service on BLM lands.



2015 ALTERNATIVE **CONCEPTS**

Hunting Guide-Outfitters

Alternative #1:

Within one year of the approved plan, establish the following allocation limits for big game G-O operating within each GUA of the planning area:

18-02 (1), 18-03 (1), 19-01 (1), 19-02 (1), 19-03 (1), 19-04 (1), 19-05 (1), 19-06 (1), 19-07 (2), 19-08 (2), 19-09 (2), 19-11 (1), 19-12 (5), 19-13 (1), 20-02 (1), 21-01 (4), 21-02 (1), 21-03 (1), 22-07 (4), 23-05 (1).

- Maximum of 33 G-Os within the planning area (allocated by GUA identified above)
- G-Os may not operate in more than 2 GUAs on **BLM land** within the planning area.
- No SRPs authorized within 25-mile radius of established community
- Continue to evaluate G-Os and transporter activities on a case-by-case basis
- For new SRP holders, permits would be issued for 1-year and may be extended for up to 10-years total, with annual validation requirements



2015 **ALTERNATIVE CONCEPTS**

Hunting Guide-Outfitters

Alternative #2: YOU suggest feedback and submit written comment (Spring 2015)

Alternative #3:

- Special Recreation Permits for G-Os may be authorized near established communities in the planning area
- Maximum of 40 G-Os within planning area (allocated by GUA)
- Each G-O may operate in up to 3 GUAs
- New SRP holders may be given an initial multi-year permit for a period up to 10-years, with annual validation requirements.
- Allocation limits on G-Os would be established on a case-by-case basis at the time of permit granting or renewal. These allocation limits would be determined, in part, based on observed conflict with other uses.

Bering Sea - Western Interior



Resource Management Plan



UPDATE

DEC 2015: BLM presented agency updates

- Big Game Commercial Services Board
- Alaska Professional Hunters Association Annual Meetings

RESULTED IN

- Multiple inquiries and questions
- Field Office - targeted outreach to APHA and all hunting permittees in the BSWI RMP planning area (18)
 1. Provided information
 2. Requested comments
 3. Participated on conference call to answer questions

PUBLIC COMMENT

- 4 comments received and will be considered as we develop our full range of alternatives for the Draft RMP

PLAN WEB SITES AND CONTACT INFORMATION

BSWI: www.blm.gov/ak/planning/bswi

Email: BSWI_RMP_Comment@blm.gov

CY: www.blm.gov/ak/cyrmp

Email: Central_Yukon@blm.gov

EI: www.blm.gov/ak/eirmp

Email: Eastern_Interior@blm.gov

Thank you!



BLM

Alaska



Other BLM Updates

Regional Mitigation Strategy

- BLM Alaska is currently in the draft RMS development stage. Our team is working through stakeholder comments, workshop feedback, etc.
- Current stakeholder comment period ends June 15 - we are particularly interested in stakeholder input on how to develop future compensatory mitigation amounts and identification of specific mitigation actions or projects that could offset socio-cultural impacts and impacts to subsistence uses and access
- The public Draft RMS will be released in summer 2016 for review and comment
- The Final RMS is expected to be released before the end of 2016
- Website: <http://www.blm.gov/ak/st/en/prog/NPR-A/RMS.html>



BLM

Alaska

Other BLM Updates Continued

Legacy Wells

- -Three task orders were awarded for various levels of surface and subsurface work for 18 legacy well sites in the Cape Simpson and Barrow areas this past winter.
- -To date, the subsurface work (plugging and abandonment) has been completed at 10 of the 18 sites.
- -Surface work will occur at all 18 sites this summer and subsurface work will begin at 3 of the road accessible sites near Barrow in August.

- Website:

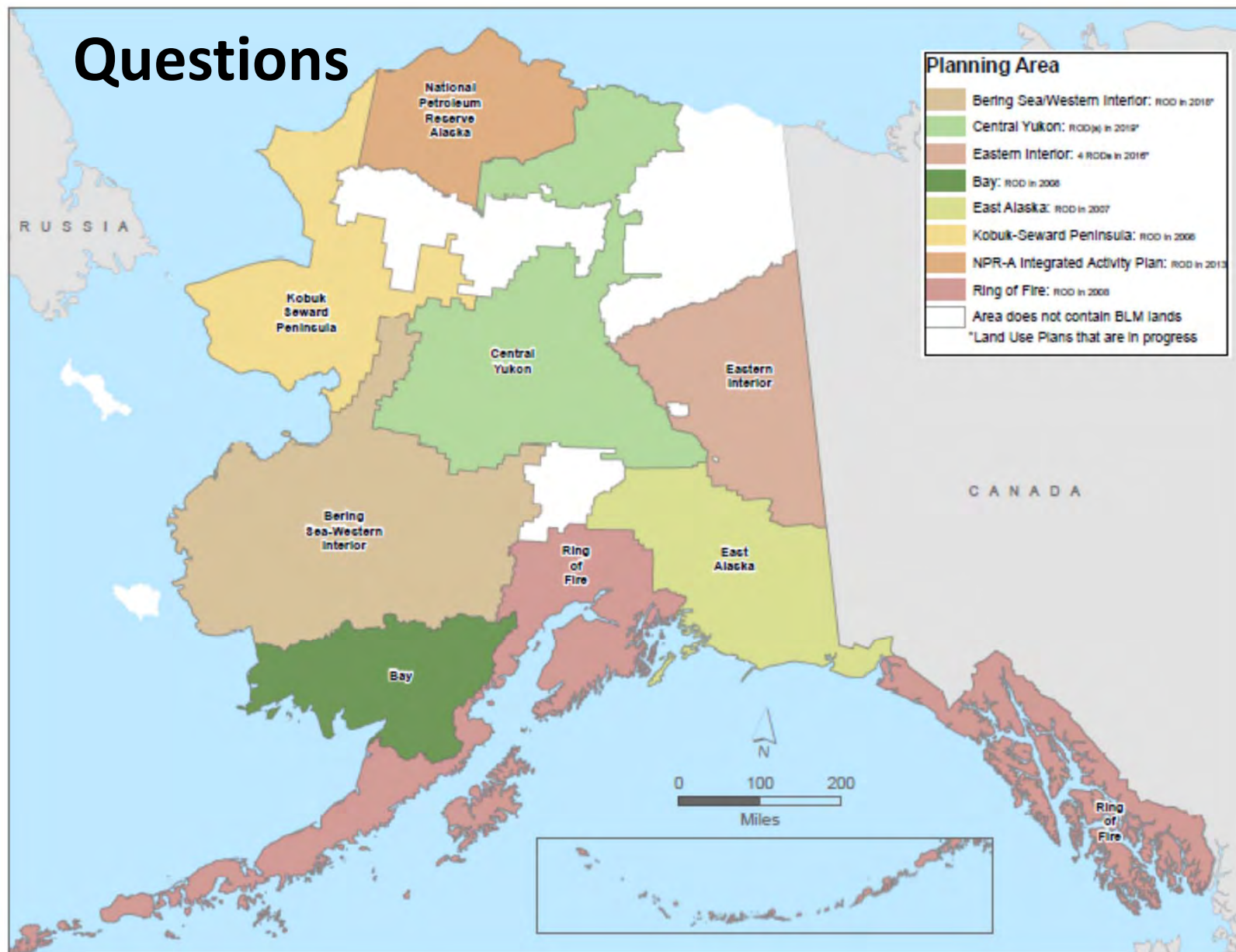
http://www.blm.gov/ak/st/en/prog/energy/oil_gas/npra/legacywell.html

Greater Mooses Tooth 2

- Notice of Intent expected to publish in the Federal Register in May 2016



Questions



BLM

Alaska

