

Regional Mitigation Strategy for Northeastern NPR-A

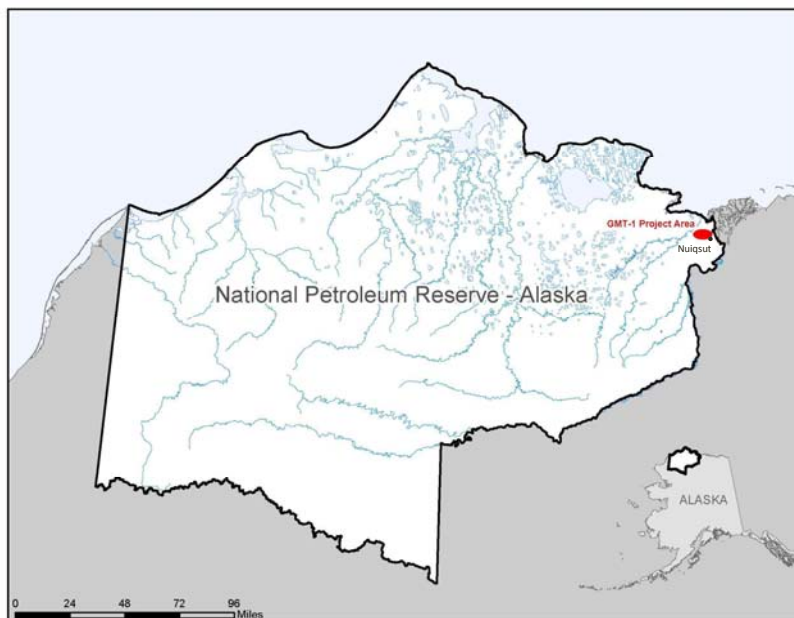
Molly Cobbs
Regional Mitigation Strategy Coordinator
BLM Alaska State Office

Google "BLM AK RMS"

(907) 271-3202
mcobbs@blm.gov



Greater Mooses Tooth 1 Project



Background

To address GMT1 impacts, the permittee must contribute:

1. \$1M to develop a Regional Mitigation Strategy (RMS) for future oil and gas development in NE NPR-A
2. \$7M to fund GMT1-specific mitigation projects (to compensate for residual impacts to the community of Nuiqsut)



3

Background

- RMS will be regional in scope
 - Northeastern NPR-A (geographic area still to be determined)
- GMT1 compensatory mitigation plan will be a component of the NE NPR-A RMS
 - GMT1 compensatory mitigation plan will be specific to Nuiqsut impacts
- Presentation will address the overall RMS



4

Background

- GMT1 ROD identified residual impacts that could not be fully mitigated through avoidance or minimization
- Secretarial Order 3330: DOI should seek to offset or compensate for residual impacts (compensatory mitigation)
- BLM Interim Policy (MS-1794) specifically directs:
 - BLM to seek compensation
 - A regional approach where large-scale development and future mitigation needs are anticipated
 - ➔ *Regional Mitigation Strategy (RMS)*



5

RMS Basics

- From the GMT 1 ROD:

The RMS will serve as a roadmap for mitigating impacts from GMT1 and future projects enabled or assisted by the existence of GMT1.

The RMS will identify resources, values, and functions that warrant mitigation...

The RMS will identify priority areas within the NE NPR-A for avoidance and future compensatory mitigation actions.

- Identify strategically, implement incrementally



6

RMS Basics

- Landscape-scale approach
- Anticipates future mitigation needs and identifies sites or measures that could help BLM achieve sustained yield
- Shifts from piecemeal, permit-by-permit mitigation to a holistic approach
- RMS \neq decision, instead RMS = strategic assessment that can inform subsequent decisions
- RMS developed outside of the NEPA process



RMS Elements

- Introduction and purpose, geographic extent
- Current and anticipated development
- Natural resource functions and social values at risk and residual impacts to be mitigated
- Overarching mitigation goals
- Range of mitigation actions
- Criteria to prioritize mitigation actions
- Guidance on monitoring and adaptive management



RMS Benefits

- Addresses a **range of residual impacts** (environmental, social, cultural, community needs)
- **Broad stakeholder involvement**
- Developed ahead of permitting decisions, intended to **improve permitting efficiency**
- **Regional scale** more effectively addresses cumulative effects
- **Certainty** for industry, stakeholders and public



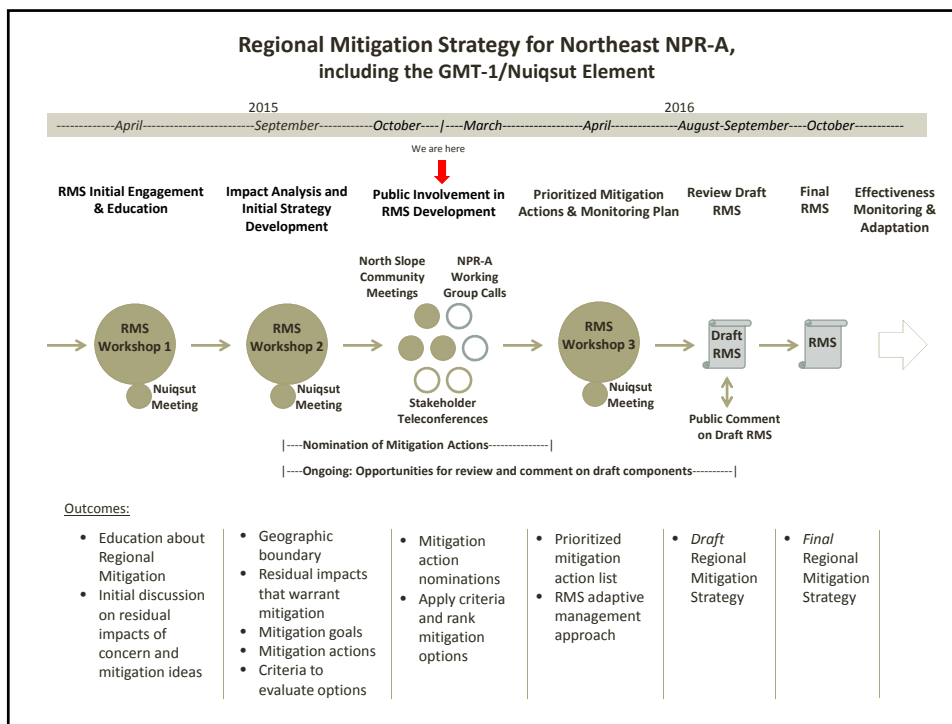
9

NE NPR-A RMS

- April 2015 RMS Workshop 1 - Fairbanks
- May 2015 Meeting in Nuiqsut – GMT1 Fund
- Sept 2015 Meeting in Nuiqsut - GMT1 Fund
- Sept 2015 RMS Workshop 2 - Barrow
- Mid-process Teleconferences; NPR-A Working Group and community meetings
- Ongoing Draft products / public comments
- Spring 2016 RMS Workshop 3 - TBD
- Summer 2016 Draft RMS - Public comment period
- October 2016 Final RMS



1



Comments for Initial Draft RMS

- Encouraging stakeholders to comment by **Nov. 30**
- Workshop #2 materials offer a starting point:
 - Geographic Area = Northeastern NPR-A
 - Unavoidable/residual impacts
 - Mitigation goals
 - Mitigation actions
 - Criteria – which actions to take 1st, 2nd, etc.
 - Locations – *where* should specific actions occur?
 - Process, stakeholder engagement, other topics?
- Google **BLM AK RMS** – Sept 2015 Workshop link



Questions?

Molly Cobbs
Regional Mitigation Strategy Coordinator

Google "BLM AK RMS"

BLM Alaska State Office
(907) 271-3202

mcobbs@blm.gov



08/25/2013 05:13