

# The Joint Pacific Alaska Range Complex Enhancement and Modernization Draft EIS

---

# The Joint Pacific Alaska Range Complex Enhancement and Modernization Draft EIS

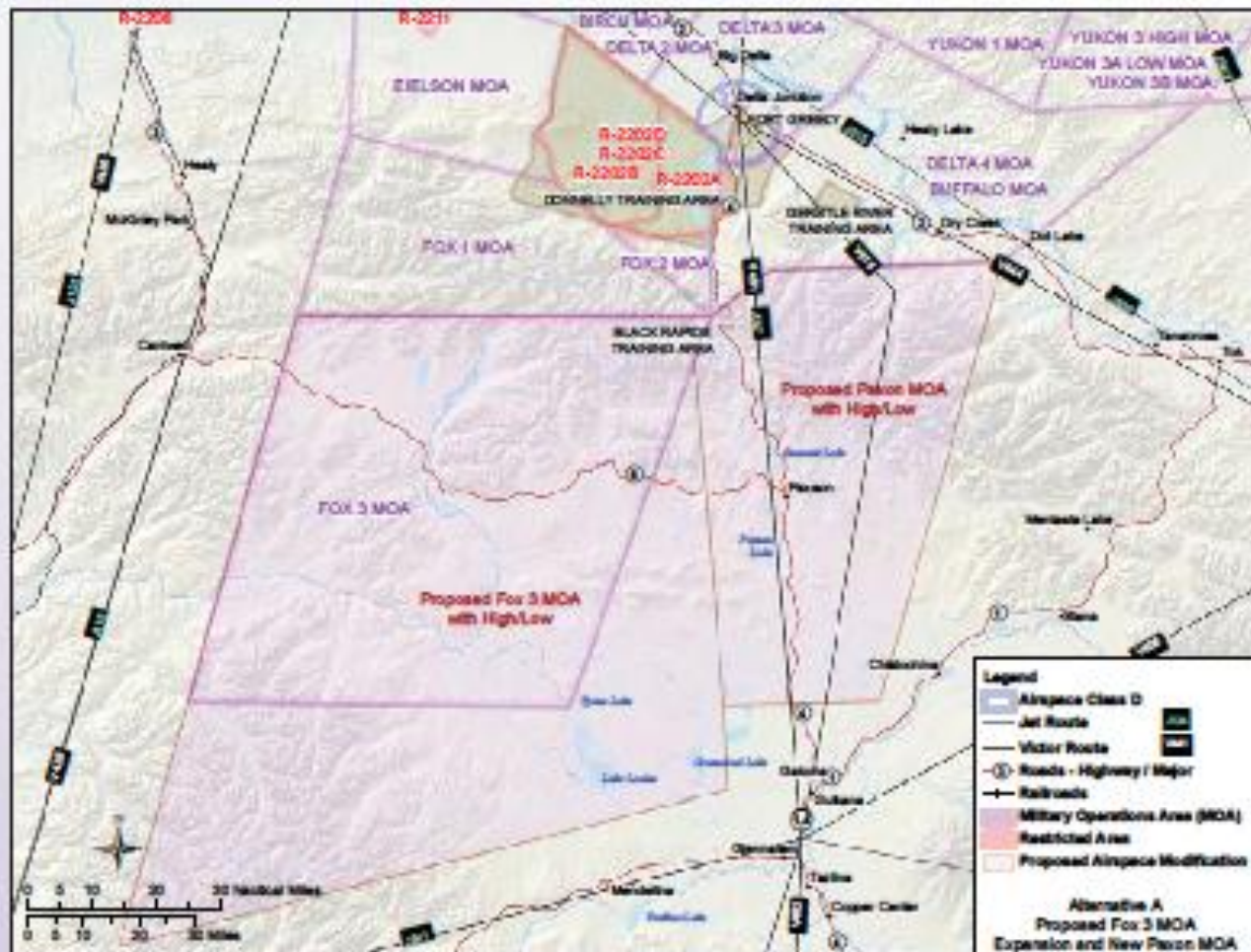
---

Goal of this presentation is provide a brief overview of the facts and encourage discussion on which we may formulate Commission comments.

# JPARC is:

- A land, air, sea, space and cyberspace training facility;
- Geographically dispersed throughout Alaska;
- Provides mountainous terrain, cold weather and long period of daylight for realistic training;
- Accommodate new technology over a vast uncluttered electromagnetic environment;
- 64,000 sq. miles of airspace, 2,490 sq. miles of land space with 1.5 million acres maneuver lands and 42,000 sq. naut. Miles over the Gulf of Alaska.

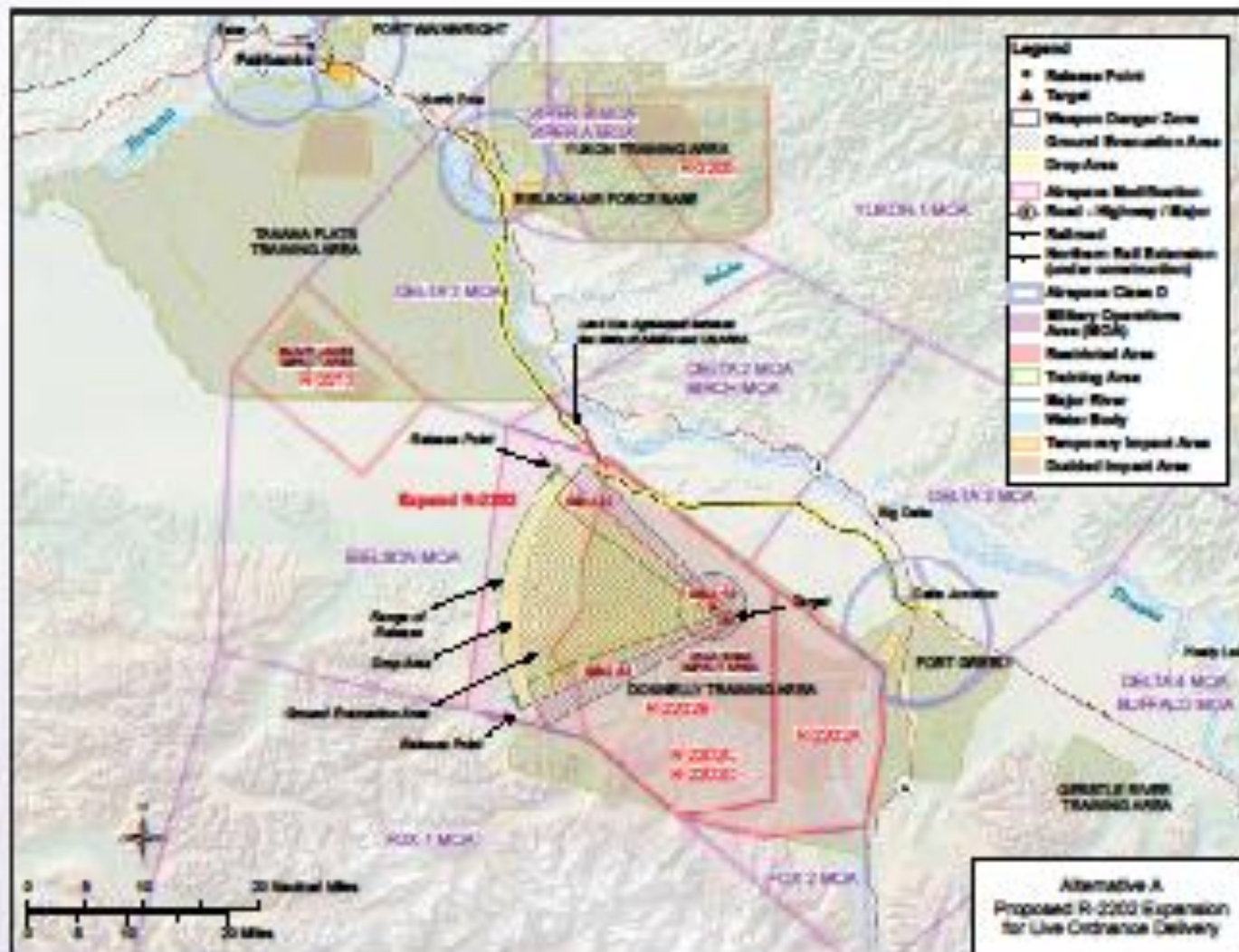
# 1 Fox 3 Military Operations Area (MOA) Expansion and New Paxon MOA



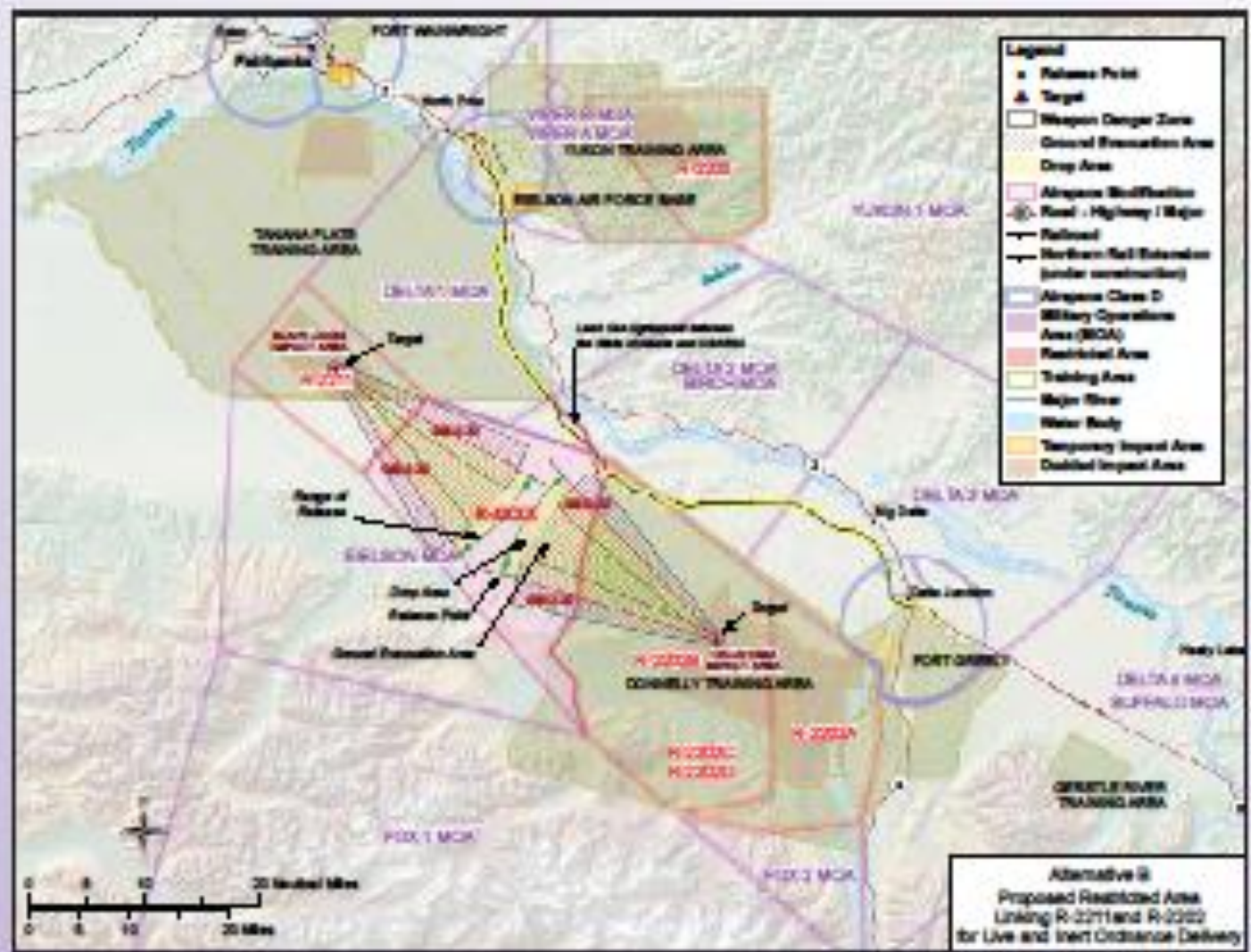
**Alternative A:** Proposed Fox 3 MOA Expansion and New Paxon MOA with High- and Low-Altitude Sectors.







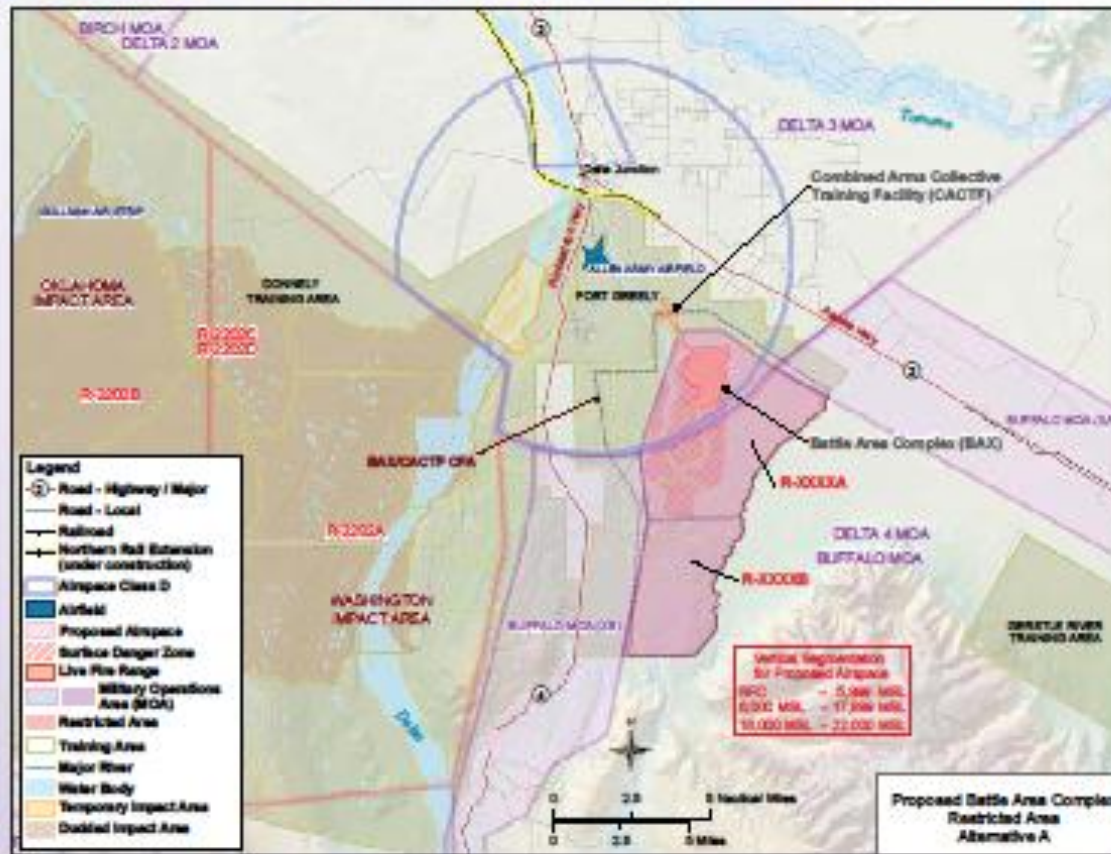
**Alternative A: Proposed R-2202 Expansion for Live Ordnance Delivery.**



**Alternative B: Proposed Restricted Area Linking R-2211 and R-2202 for Live and Inert Ordnance Delivery.**

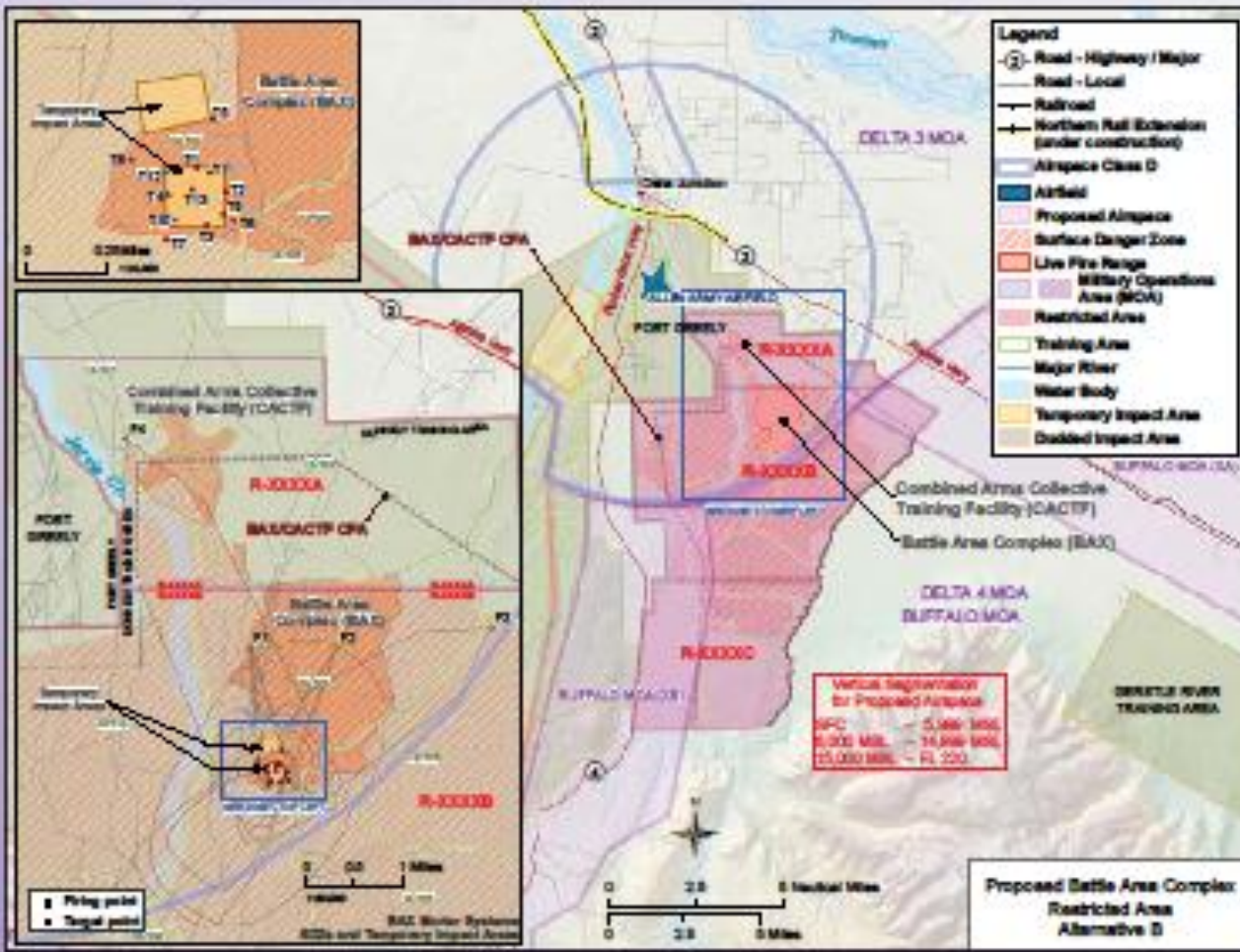


### 3 Battle Area Complex (BAX) Restricted Area Addition



**Alternative A: Proposed Battle Area Complex Restricted Area.**



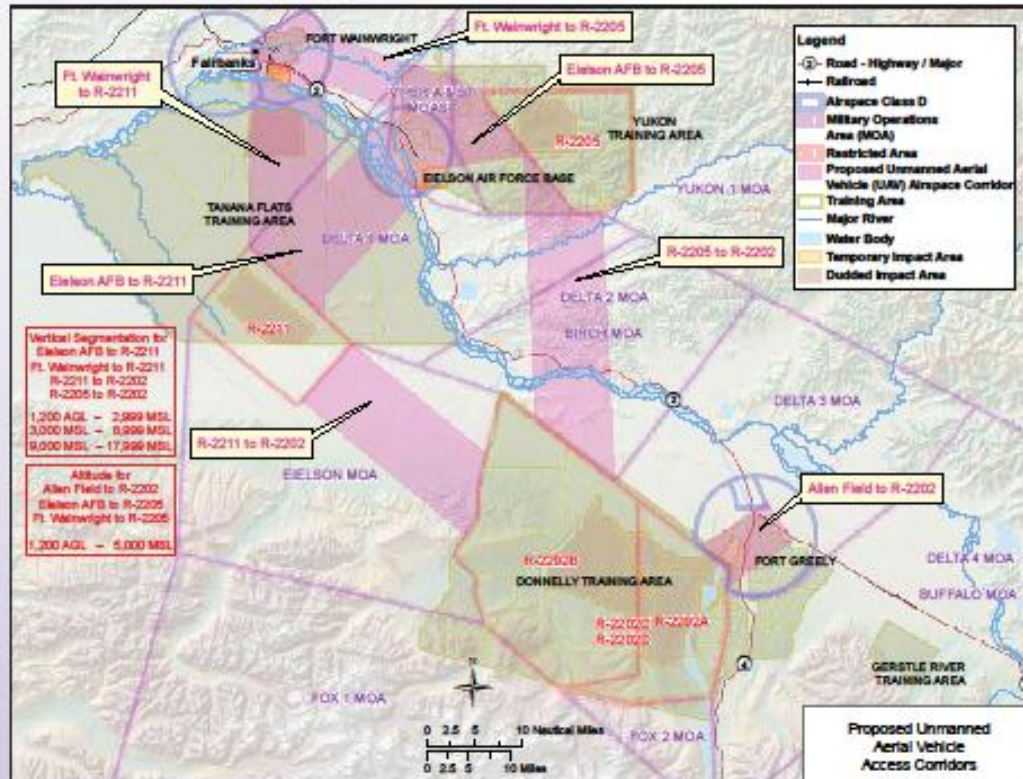


**Alternative B: Proposed Battle Area Complex Restricted Area.**





## 6 Unmanned Aerial Vehicle (UAV) Access



Proposed Unmanned Aerial Vehicle Access Corridors

