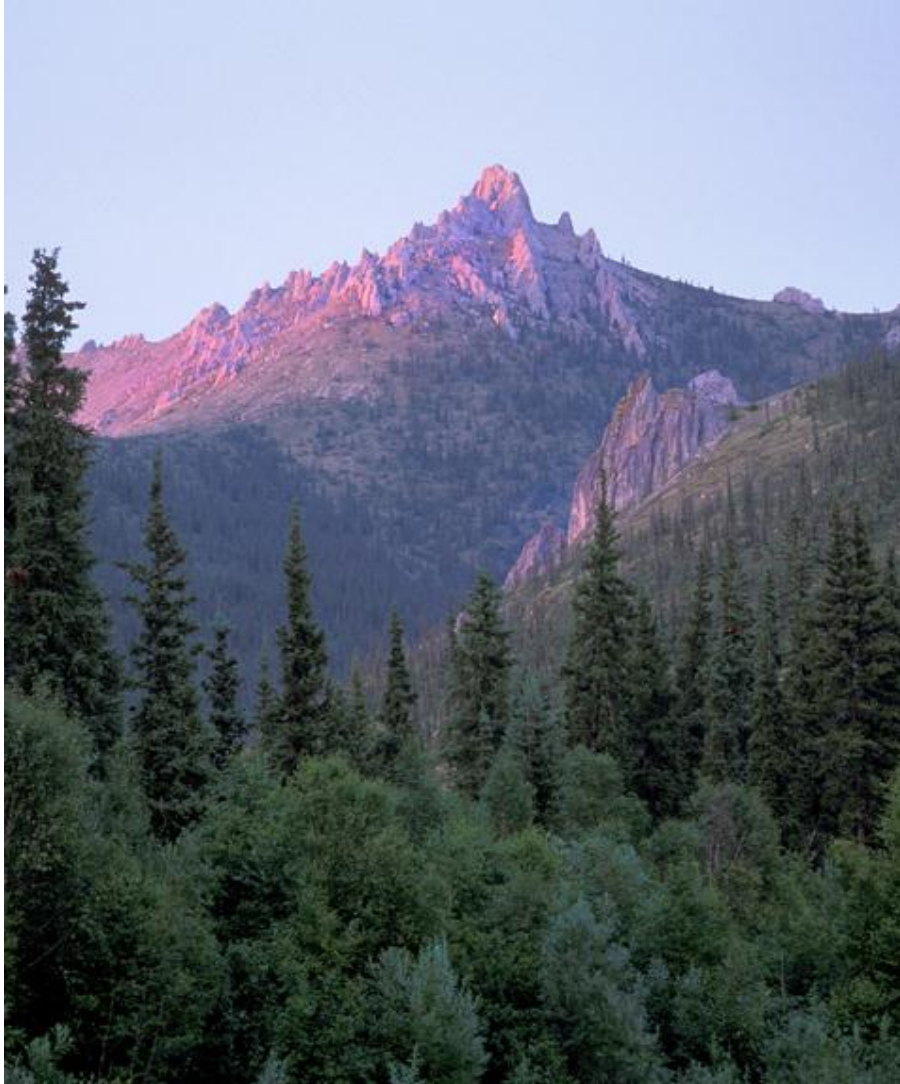
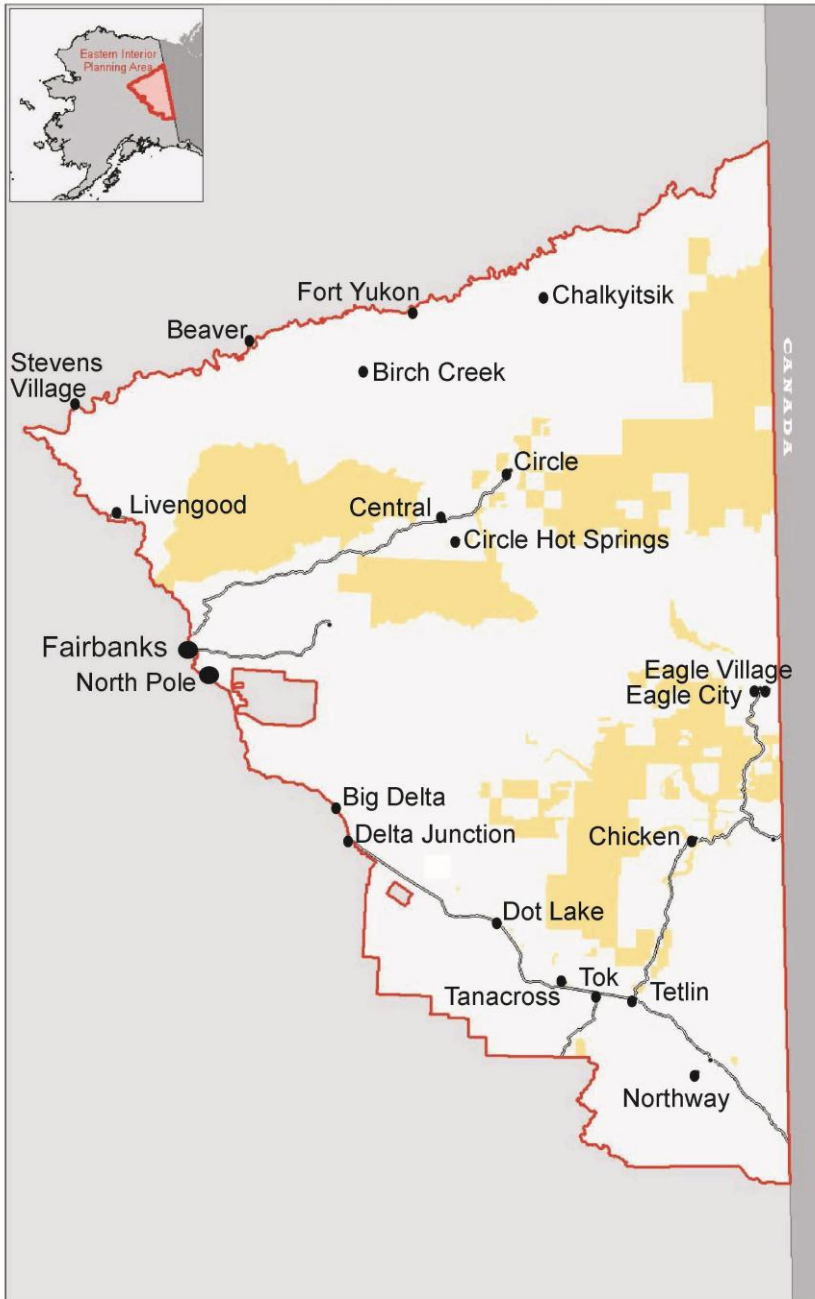


Eastern Interior Draft Resource Management Plan/ Environmental Impact Statement



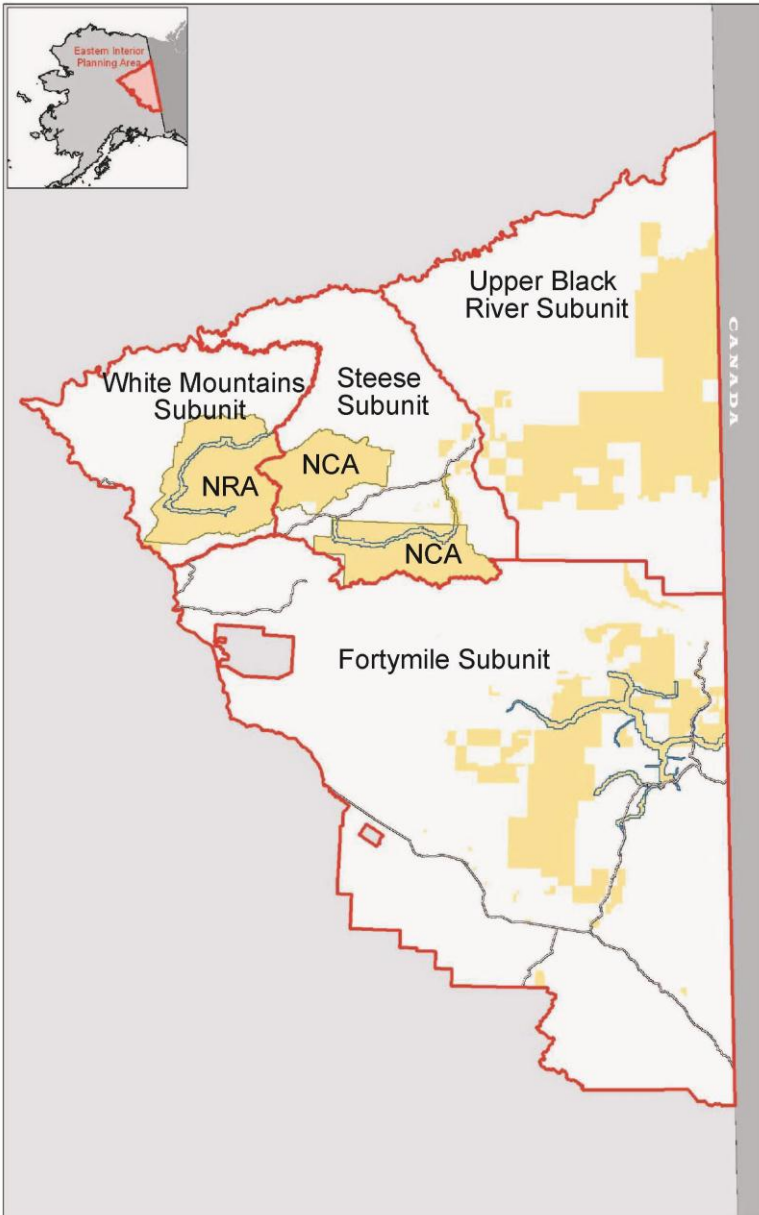
Citizens' Advisory Commission on
Federal Areas

Alaska BLM
Eastern Interior Field Office



Planning Area Size

- 30 million acres in the planning area
- 6,733,000 acres managed by the BLM



4 Subunits

White Mountains Subunit

- 1,020,000 acres
- White Mountains Nat'l Recreation Area
- Beaver Creek National Wild River

Steese Subunit

- 1,275,000 acres
- Steese National Conservation Area
- Birch Creek National Wild River

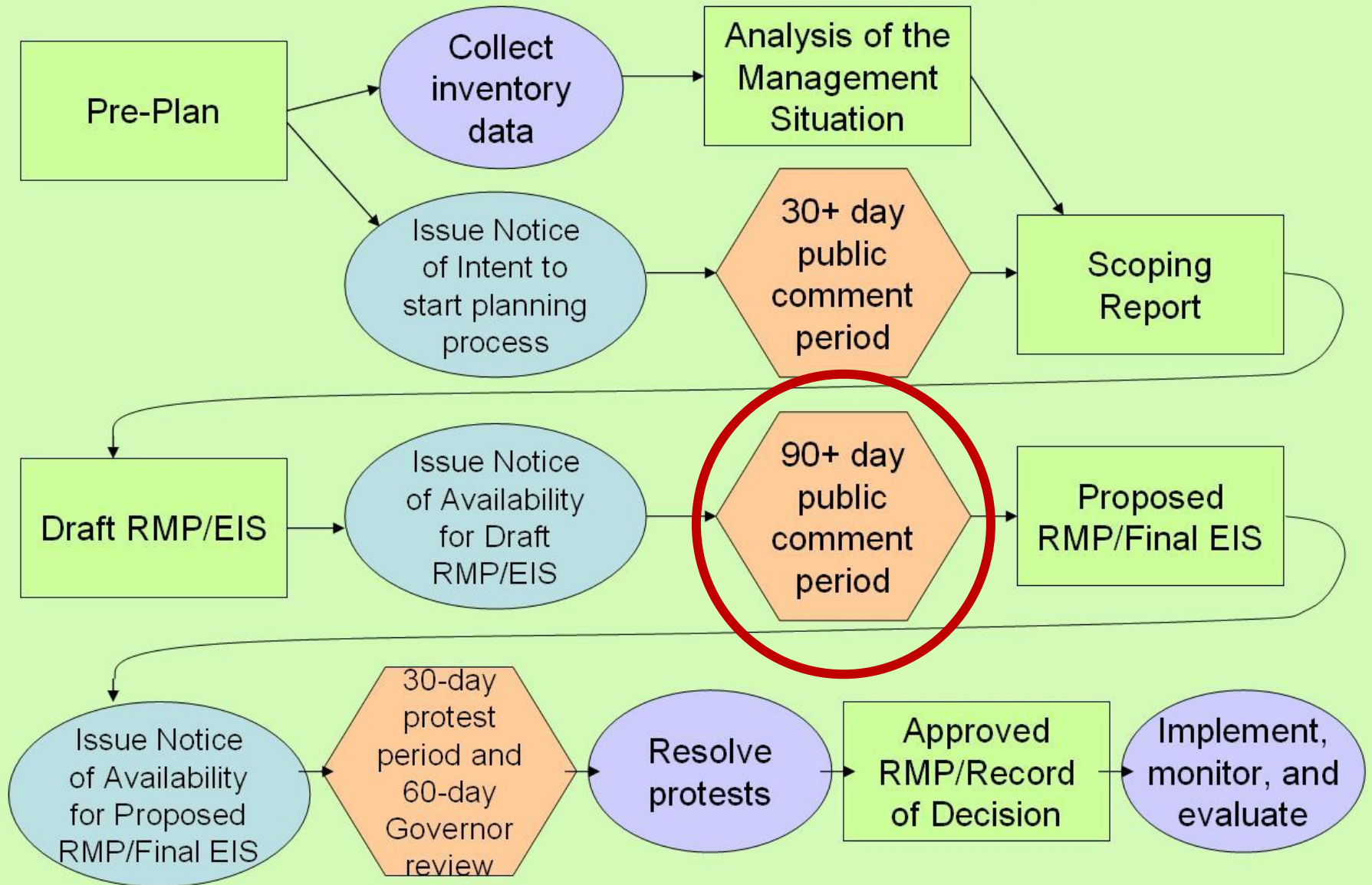
Upper Black River Subunit

- 2,361,000 acres

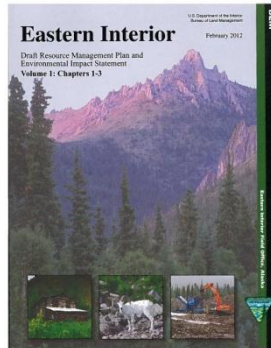
Fortymile Subunit

- 2,100,000 acres
- Fortymile National Wild & Scenic River

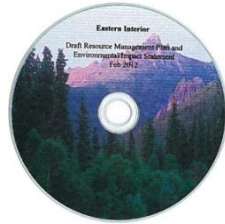
Required Planning Steps



Copies Available



Paper



CD

BLM Offices in Fairbanks and Anchorage

Call Jeanie Cole at 474-2340

Email: EasternInterior@blm.gov

Online: go to

<http://www.blm.gov/ak/st/en.html>

And follow the links under
“In the Spotlight”



Also Available: Executive summaries of each subunit,
posters on key issues

Types of Decisions the Plan Makes

- **Land allocations** – Determining which lands are available for mining, disposal, rights-of-way, etc.
- **Resource Management Objectives** – Set management objectives for natural and cultural resources such as vegetation, soil, and water.
- **Restrictions on allowable uses** – Off-road vehicles designations. Required operating procedures for land use activities.
- **Special Designations** – Determine which areas should be designated as Areas of Critical Environmental Concern, or as suitable for wild or scenic river designation.

Goal—a mix of allowable uses and protective measures that:

- Meets the needs of the American Public
- Is consistent as possible with state, local and tribal government plans and policies.
- Meets the mandates provided by Congress:
 - ANILCA: designations, subsistence, access
 - FLPMA: Federal Land Management Policy Act, multiple-use and sustained yield mandate
- Follows regulations (43 CFR)
- Reflects the direction given to us by the Courts on how to interpret these laws
- Reflects BLM Policy



EIRMP Alternatives: Chapter 2 of Draft

Alternative A: Continue Current Management Practices
NO ACTION ALTERNATIVE

Alternative B: Emphasize Protection of Resource Values

Alternative C: Provides a moderate level of resource protection and resource development AGENCY PREFERRED ALTERNATIVE

Alternative D: Emphasizes Resource Development



Key Issue: Areas of Critical Environmental Concern

Criteria (from 43 CFR 1610)

(1) Relevance:

- a significant historic, cultural, or scenic value
- a fish or wildlife resource or natural system or process

(2) Importance: the relevant feature shall have substantial significance and values. This generally requires qualities of more than local significance and special worth, consequence, meaning, distinctiveness, or cause for concern.

Fortymile and Steese Subunits



Upper Black River Subunit



Areas of Critical Environmental Concern

Subunit	ALT B	ALT C	ALT D
Fortymile (Fortymile ACEC)	732,000 acres	547,000 acres	546,000 acres
Steese (Steese ACEC)	927,000 acres	460,000 acres	193,000 acres
Upper Black River (Salmon Fork ACEC)	621,000 acres	621,000 acres	621,000 acres
White Mountains (White Mountain ACEC)	589,000 acres	0 acres	0 acres
Total	2,869,000 acres (43%)	1,628,000 acres (24%)	1,360,000 acres (21%)

Withdrawals — Closing Lands to New Mining Claims

ANCSA: Under the authority of ANCSA the Secretary of the Interior has closed almost all of the planning area to new mining claims.

ANILCA: closed the Steese National Conservation Area (but gave the Secretary the authority to lift the withdrawal) and the White Mountains National Conservation Area (but gave BLM the authority to lease some minerals.)

WSRA (as amended by ANILCA): ½ mile on either side of “wild” segments.

In the RMP: BLM makes recommendations to the Secretary of the Interior about withdrawals. The Secretary has to take action to lift the withdrawals

Recommended as Open to Mineral Entry in Acres (%)

Subunit	Alternative B	Alternative C: Agency Pref.	Alternative D
Fortymile	976,000 (47%)	1,468,000 (71%)	1,931,000 (92%)
Steese	45,000 (4%)	1,207,000 (22%)	1,276,000 (54%)
Upper Black River	0	2,361,000 (100%)	2,361,000 (100%)
White Mountains	0	0	0
Total	1,021,000 (15%)	4,114,000 (61%)	4,974,000 (74%)

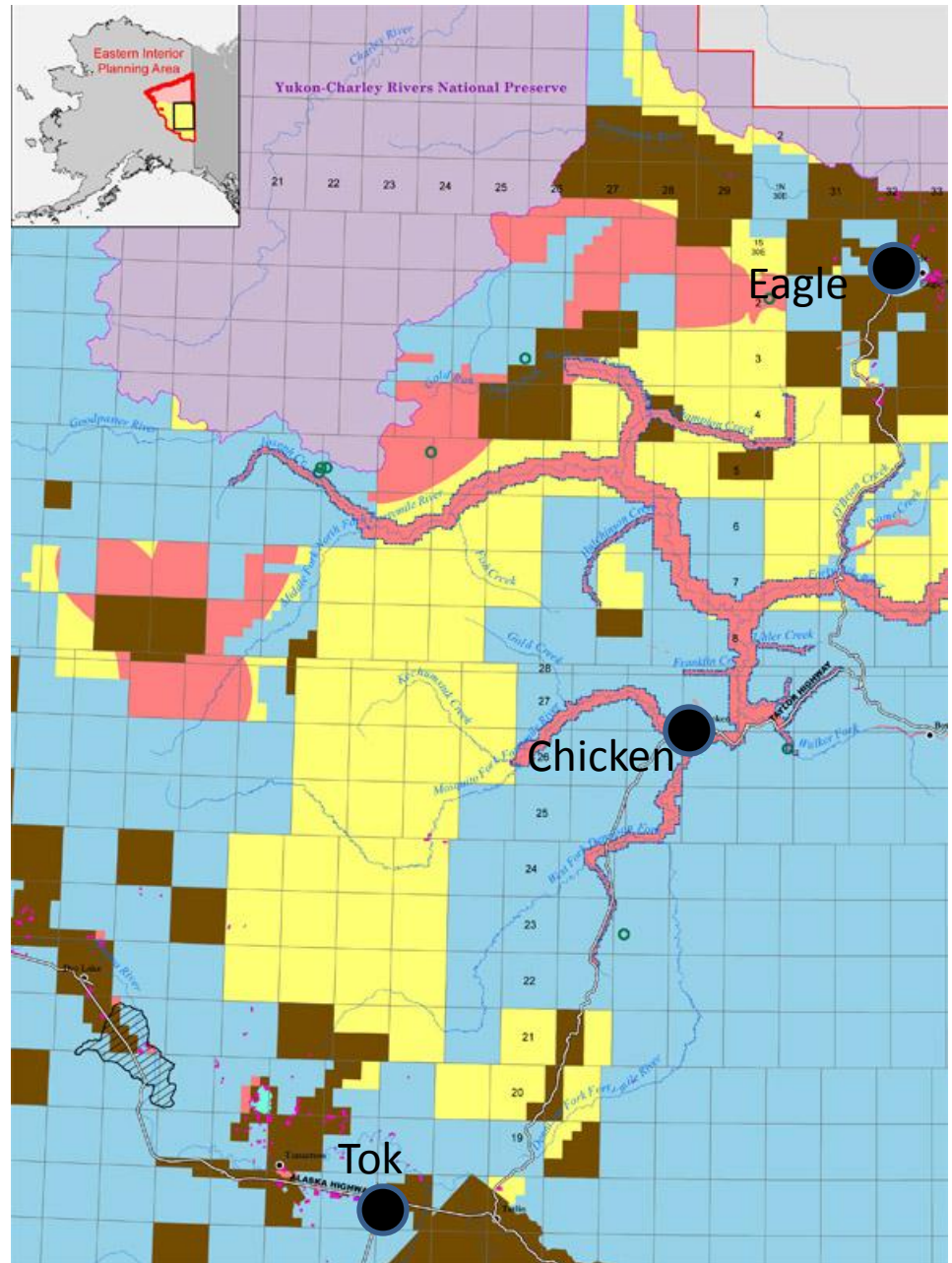
Fortymile Subunit Alternative C Locatable Minerals

 Recommended Open to Mineral Entry


- 1,468,000 acres
- 71% of Subunit


 Recommended Closed to Mineral Entry

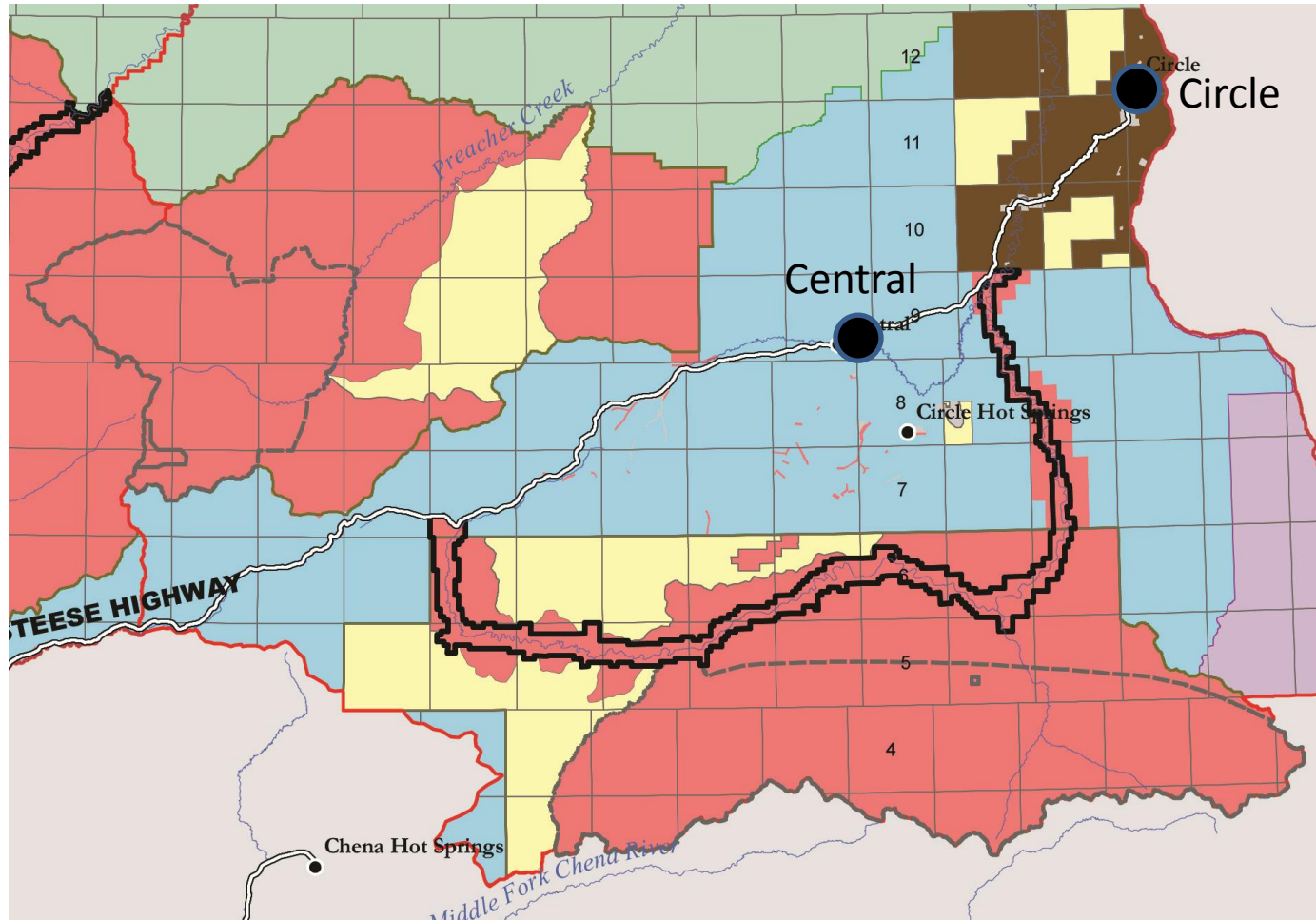
- 608,000 acres
- 29% of Subunit



Steese Subunit Alternative C — Locatable Minerals

 Recommended Open
285,000 acres (22%)

 Recommended Closed
992,000 acres (78%)

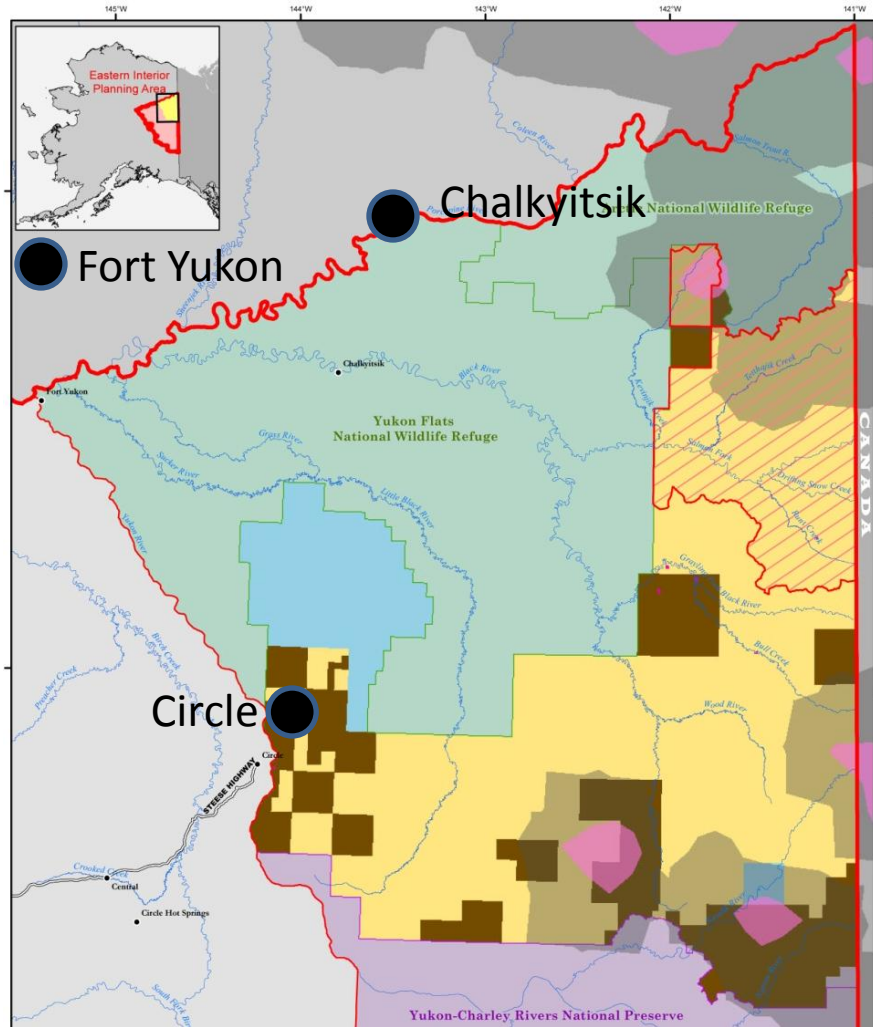


Upper Black River Subunit Alternative C Locatable Minerals

Recommended Open
to Mineral Entry:
2,361,000 acres, 100%

Recommended Closed
to Mineral Entry: 0

Salmon Fork ACEC:
additional required
operating procedures



Mining in the White Mountains NRA

ANILCA

- Closed the White Mountains to mineral entry.
- Allowed for the development of a program for disposal of hardrock minerals through a leasing program.

1986 White Mountains NRA Plan

- Recommended opening 44% to leasing hardrock minerals.

Draft RMP

- Discusses a hardrock mineral leasing program under a section called “Alternatives Considered but Not Analyzed in Detail.”
- Implementing a hardrock mineral leasing program was dismissed without further analysis under the assumption that only holders of valid mining claims could qualify for such a program.
- It is inappropriate to dismiss a leasing program without further analysis.
- At least one alternative that would recommend leasing hardrock minerals.

Key Issue: Travel Management (OHV use)

Change from Current Management: “GVWR to Curb Weight”

- Limitations for winter and summer use for many areas: from ≤ 1500 pounds Gross Vehicle Weight Rating to ≤ 1000 pounds curb weight and AND ≤ 50 ” in width.
- Easier to determine.
- Consistent with the state’s definition.

Travel Management — White Mountains Subunit Major Changes in ALT C compared to current

- Minor change in the weight restrictions.
- Restricting summer use to Designated Trails, except for game retrieval.
- Opening one trail to UTVs (≤ 1500 curb weight and ≤ 64 " width) currently not allowed.
- No summer OHV use on 565,000 acres (increase of 2,000 acres.)

Travel Management — Steese Subunit Major Changes in ALT C compared to current

- Minor change in the weight restrictions.
- Restricting summer use to Existing Trails, except for game retrieval.
- No summer OHV use on 677,000 acres (increase of 535,000 acres.)

Travel Management — Fortymile Subunit Major Changes in ALT C compared to current

- Major change in the weight/width restrictions:
 - Fortymile WSR Corridor: from ≤ 1500 pound GVWR to ≤ 1500 Curb weight AND ≤ 64 " in width.
 - Outside the corridor: from ≤ 6000 pounds GVWR, to ≤ 1500 Curb weight AND ≤ 64 " in width.
- Restricting summer use to Existing Trails, except for game retrieval.
- No summer OHV use on 121,000 acres (currently no areas closed to summer OHV use.)

Travel Management — Upper Black River Subunit, Alternative C

- No current plan.
- Entire subunit open to snowmachines ≤ 1000 pounds curb weight.
- Entire subunit open to summer OHV Use ≤ 1500 pounds curb weight.

Public Participation

- Executive Summaries of each subunit
- Posters on key issues
- Indexes for issues
- Two meeting for each community



Public Meeting Dates

Location	Date	Location	Date
Fairbanks	April 9	Anchorage	May 9
Fort Yukon	April 11	Tok	May 16
Circle	April 16	Delta	May 17
Eagle City	April 23	Birch Creek	May 23
Eagle Village	April 24	Chalkyitsik	May 29
Central	May 7	Chicken	June 1

Other Meetings:

- Alaska Miners Assoc.
- Citizens' Advisory Commission on Federal Areas
- Alaska Wilderness League