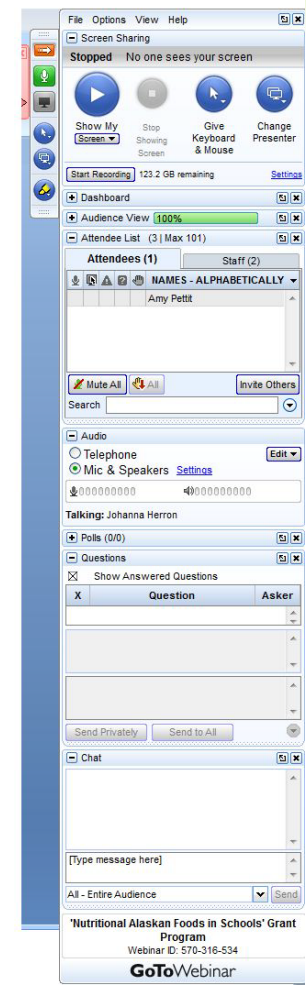


HOUSEKEEPING

- ③ Submit questions anytime
- ③ IF WE DO NOT MAKE IT THROUGH ALL THE QUESTIONS WE WILL SEND OUT RESPONSES TO THEM
- ③ Don't worry about writing information from the slides, we have them posted on our websites for you to access



HOUSEKEEPING

Presentations will be archived at: http://dnr.alaska.gov/ag/ag_FTS.htm

State of Alaska
myAlaska My Government Resident Business in Alaska Visiting Alaska State Employees

Alaska Department of Natural Resources
Division of Agriculture

Agriculture Home Programs Resources

Natural Resources > Division of Agriculture "Promote and encourage development of an agriculture industry."

FARM TO SCHOOL PROGRAM

[2011 Evaluation Report: AK Farm to School Program](#)
[Alaska School Garden Food Safety Guidelines](#)
[Sign up for the Alaska Farm to School Listserv!](#)
[Resources for School Food Service Professionals](#) [Alaska Grown Source Book](#)

The Farm to School (FTS) program is designed to offer expertise and support to all areas of the state to pursue farm to school activities and interests. The prevailing program goal is having product produced and/or harvested in Alaska available in the school food environment. We hope that through a variety of outreach efforts, we will increase the procurement and use of food grown in the state by public schools.

The success of farm to school programs nationwide is dependent on the flexibility of the program to meet the diverse needs of the community, and culture within a given state. Places with such extreme climatic and geographic conditions like Alaska need to be creative and resourceful while promoting Alaska's unique agricultural bounty.

Scroll down the page

Presentation archives

[2012 webinar: Nutritional Alaskan Foods in Schools](#)

[2012 webinar: What is the Alaska Farm to School Grant?](#)

[Slides from the 2012 Alaska School Nutrition Association Conference](#)

[Slides from the 2011 Alaska School Nutrition Association Conference](#)

[January 12, 2011 Summit Presentation](#)

[January 12, 2011 Summit Q & A](#)

[January 12, 2011 Summit Attendee List](#)

[April 26, 2011 Summit Strategic Plan](#)

[April 26, 2011 Guest Speaker](#)

HOUSEKEEPING

Presentations will be archived at: <http://commerce.alaska.gov/dca/grt/NAFS.htm>

State of Alaska
myAlaska My Government Resident Business in Alaska Visiting Alaska State Employees

Department of Commerce, Community, and Economic Development
Grants Section

HOME COMMUNITY INFORMATION FUNDING RESOURCES

State of Alaska > Commerce > DCRA > Grants Section > Nutritional Alaskan Foods in Schools

DCRA Programs

- Grants Section
- Local Government Assistance Management Assistance
- Local Boundary Commission
- Local Government Online (LOGON)
- Office of the State Assessor (OSA)
- Research & Analysis Section
- Rural Utility Business Advisor (RUBA)
- Planning and Land Management
- Community Aid and Accountability

Division Links

NUTRITIONAL ALASKAN FOODS IN SCHOOLS

The Nutritional Alaskan Foods in Schools is a pilot program meant to encourage every Alaskan school district to purchase nutritious Alaska Grown produce, seafood, or aquatic protein. The Department of Commerce, Community, and Economic Development, Division of Community and Regional Affairs (DCCED, DCRA) will administer the allocation and distribute the money to school districts.

Three million dollars has been appropriated for use in this program in FY13.

- Fifty-three percent (53%) of the funding will be allocated according to the 2011-2012 school year Average Daily Membership of each school district.
- Forty-seven percent (47%) of the funding will be allocated according to the 2011-2012 School District Cost Factor.

The sum of these two amounts equals the total funding available to each school.

Helpful Hints

- Do you need to contact a Grant Administrator? [click here](#)
- Visit the Community Funding Database [click here](#)
- For a list of most state and federal capital improvements in a specific community, see the Capital Project Database.

Scroll down the page

UP COMING WEBINARS

Join us to learn about the NAFS grant program. We will talk about the grant program process, eligible foods, the reimbursement form, tolls and resources, marketing, ket contacts, and some common questions.

We will also be taking questions and comments about the grant program. This webinar will be hosted by the Alaska Farm To School Program and Department of Commerce, Community, and Economic Development, and the Alaska Seafood Marketing Institute.

Click on a date to register:

[Wednesday, September 19 - 2:00pm to 3:00pm](#)

Webinar presentation slides:

(click on a link below to download the handout(s) from that days webinar):

[Friday, September 14 \(PDF format\)](#)

Debi Kruse, Grant Administrator III
Division of Community and Regional Affairs
550 W. 7th Ave., Suite 1640
Anchorage, AK 99501
907 269-8131
debi.kruse@alaska.gov

For more information about the pilot project please contact:

State of Alaska DCCED
Commissioners Office
P.O. Box 110800
Juneau, AK 99811
907 465-2500

NAFS REIMBURSEMENT GRANT

- Department of Commerce, Community and Economic Development
- DEPARTMENT OF NATURAL RESOURCES, DIVISION OF AGRICULTURE
 - FARM TO SCHOOL
 - ALASKA GROWN MARKETING
- Alaska Seafood Marketing Institute
- Department of Environmental Conservation, Food Safety and Sanitation Program
- Department of Education and Early Development, Child Nutrition Programs



NUTRITIONAL ALASKAN FOODS IN SCHOOLS

- ◎ Grant program description

 - ◎ **Process**

 - ◎ Qualifying foods

 - ◎ Suggestions and ideas

- ◎ Tools and resources

- ◎ Marketing

GRANT PROCESS

Apply for grant

Use instruction sheet



Purchase eligible food

Agriculture point of contact – Farm to
School Program

Fish/Seafood point of contact – AK
Seafood Marketing Institute



Submit reimbursement form

Submit receipts or coded invoice

List item purchased, category code,
cost, and source of purchase

REIMBURSEMENT FORM

Anything dated July 1, 2012 – June 30, 2013

Who did you purchase the item from*?

What was the item you purchased and which category does it fall under?

How much did it cost?



*The more specific you make this the better. For example, if you bought AK Grown carrots from DiTomaso we would want to know what Alaska producer they came from.

Department of Commerce, Community, and Economic Development
Division of Community and Regional Affairs
Nutritional Alaskan Foods for Schools
REQUEST FOR REIMBURSEMENT

Grantee: _____		Grant Agreement Number: _____		
Report Period: From: _____	To: _____	Report No.: _____		
Authorized Budget	Expenditures this Period	Total Grant Expenditures to Date	Balance of Funds	
NET REIMBURSEMENT TO GRANTEE		15,000		
Food Items Purchased: Complete columns below. If necessary, please attach additional sheets.				
Date	Purchased From	Item(s)	Category*	Cost
Total Spent				
<small>GRANTEE CERTIFICATION: I certify that the above information is true and correct, and that the expenditures have been made for the purpose of, and in accordance with applicable grant agreement terms and conditions.</small>		DCCED Staff Use:		
Authorized Signature _____		Encumbrance No.: _____		
Date _____		Payment Amount: _____		
Printed Name and Title _____		DCCED Approval: _____		
		DCCED Signature _____		
		Date _____		



NUTRITIONAL ALASKAN FOODS IN SCHOOLS

- ◎ Grant program description
 - ◎ Process
 - ◎ **Qualifying foods**
 - ◎ Suggestions and ideas
- ◎ Tools and resources
- ◎ Marketing

What qualifies?

- Alaska caught
- Mixed dish if majority of it is Alaska produced
- Genuine Alaska Pollock

Seafood/fish



- AK livestock
- AK poultry
- AK eggs

Meat/eggs



- AK grown
- School or community gardens

Fruits, vegetables, and grain



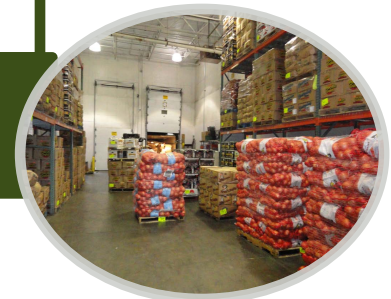
- Small or large scale

Native produce and berries



- Costs of getting product to your kitchen
- No limit

Transportation



DEC/FOOD SAFETY PROGRAM

DEC definition of an approved source:

Permitted/certified by federal, state or local gov't agency (ex. FDA, USDA, State of Alaska, Municipality of Anchorage, or permitted outside of Alaska)

Is a farm a DEC approved source for food?

*YES: If it is harvest cut/minimal trimming/school garden

Because raw agricultural products are not required to be purchased from a permitted facility

*If agricultural products are processed then it must be done in a permitted facility.

DEC/FOOD SAFETY PROGRAM

Food safety best practices for whole unprocessed products

- ⊙ All prep (cutting/processing) is done separately from other food
- ⊙ Clean and sanitize equipment and utensils after processing
- ⊙ Food is labeled with name of food and stored separately



NUTRITIONAL ALASKAN FOODS IN SCHOOLS

- ◎ Grant program description
 - ◎ Process
 - ◎ Qualifying foods
 - ◎ **Suggestions and ideas**
- ◎ Tools and resources
- ◎ Marketing



RECEIPTS



Buy a receipt book in case you purchase from a smaller producer.

List the item, quantity, and producer.

- Salmon, berries, carrots.
- Record the quantity in a measurable way; weight or units (i.e. 3 carrot bunches or 10 salmon).
- Farm name, school or community garden name, fisherman, or something else.

Date the receipt for reimbursement!

If you aren't sure if the purchase is eligible get a receipt and contact us to find out later.

SPEND IT OUT

Purchase school or
community garden food

Explore opportunities
with local processing
facilities

Work with
vendors to code
eligible product

Explore opportunities with
local retailers

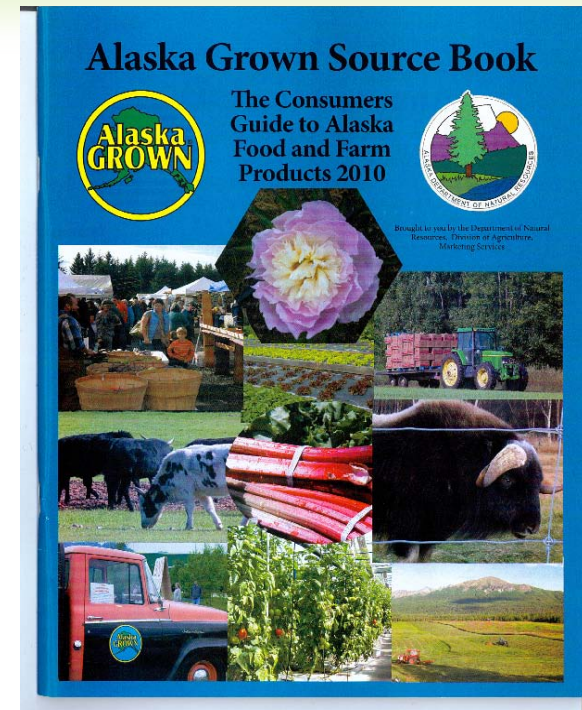
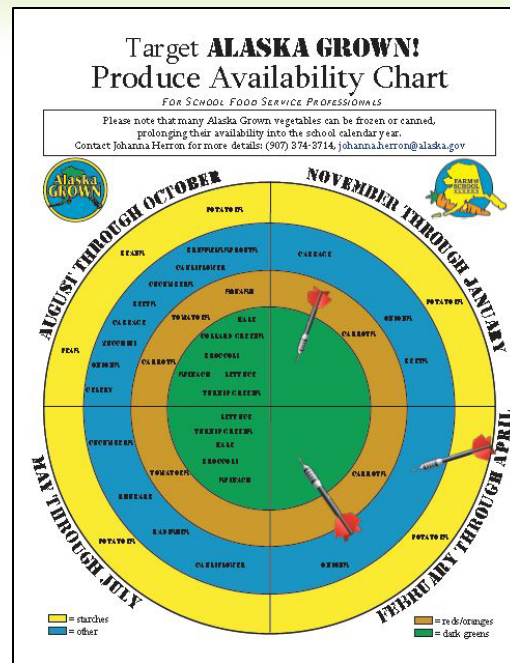
Use other food programs
to use the product in (i.e.
FFV, snack program, dinner
program, school activities)



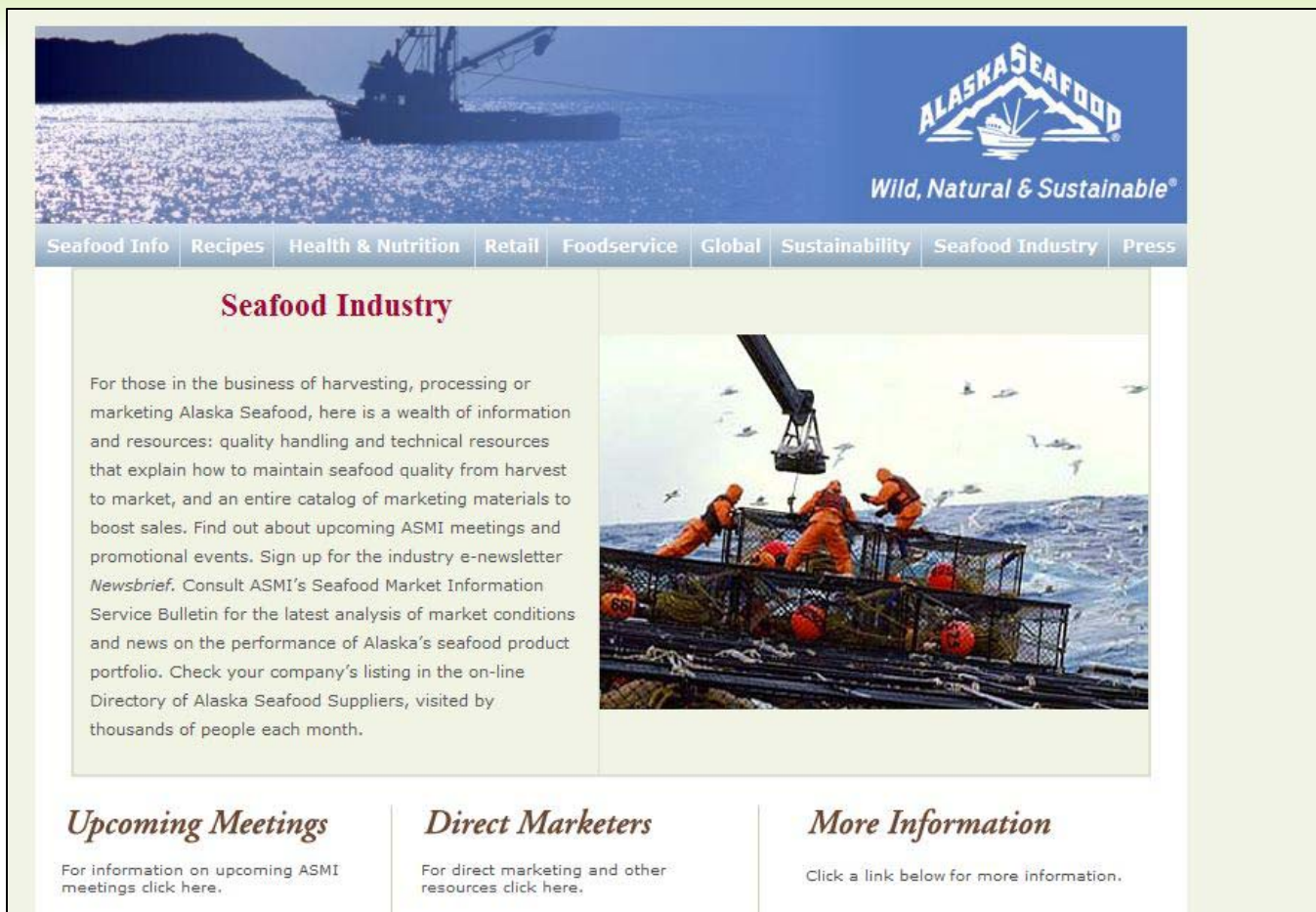
NUTRITIONAL ALASKAN FOODS IN SCHOOLS

- ◎ Grant program description
 - ◎ Process
 - ◎ Qualifying foods
 - ◎ Suggestions and ideas
- ◎ **Tools and resources**
- ◎ Marketing

Resources: agriculture



Resources: seafood




The screenshot displays the Alaska Seafood website. At the top, there is a blue banner with a fishing boat on the left and the Alaska Seafood logo on the right, which includes a mountain range and a fish. Below the banner is a navigation menu with links for Seafood Info, Recipes, Health & Nutrition, Retail, Foodservice, Global, Sustainability, Seafood Industry, and Press. The main content area features a section titled 'Seafood Industry' with a paragraph of text and a photograph of fishermen on a boat. Below this are three columns: 'Upcoming Meetings', 'Direct Marketers', and 'More Information', each with a brief description and a link.

ALASKA SEAFOOD
Wild, Natural & Sustainable®

[Seafood Info](#) [Recipes](#) [Health & Nutrition](#) [Retail](#) [Foodservice](#) [Global](#) [Sustainability](#) [Seafood Industry](#) [Press](#)

Seafood Industry

For those in the business of harvesting, processing or marketing Alaska Seafood, here is a wealth of information and resources: quality handling and technical resources that explain how to maintain seafood quality from harvest to market, and an entire catalog of marketing materials to boost sales. Find out about upcoming ASMI meetings and promotional events. Sign up for the industry e-newsletter *Newsbrief*. Consult ASMI's Seafood Market Information Service Bulletin for the latest analysis of market conditions and news on the performance of Alaska's seafood product portfolio. Check your company's listing in the on-line Directory of Alaska Seafood Suppliers, visited by thousands of people each month.



Upcoming Meetings
For information on upcoming ASMI meetings click here.

Direct Marketers
For direct marketing and other resources click here.

More Information
Click a link below for more information.

Useful links

<http://commerce.alaska.gov/dca/grt/NAFS.htm>

<http://www.alaskaseafood.org/>

http://dnr.alaska.gov/ag/ag_FTS.htm

<http://www.alaskapollock.org/>

<http://www.afdf.org/sustainability/alaskasalmon>

<http://www.uaf.edu/ces/>

<http://www.eed.state.ak.us/tls/cnp/>

<http://dec.alaska.gov/eh/fss/index.htm>



NUTRITIONAL ALASKAN FOODS IN SCHOOLS

- ◎ Grant program description
 - ◎ Process
 - ◎ Qualifying foods
 - ◎ Suggestions and ideas
- ◎ Tools and resources
- ◎ **Marketing**

MARKET YOUR CHANGES

Educational Resources

- Posters
- Fact sheets

Newsletters

- School
- Community

Use the logo on menu

- AK Grown
- AK Farm to School
- ASMI



EDUCATIONAL MARKETING

ALASKA FUN FACTS

- ▶ Alaska is huge! It has 3 million lakes, 29 volcanoes and **34,000 miles of coastline**. Plus it is the largest state in the country—it's twice the size of Texas, and the state of Rhode Island could fit into Alaska 425 times!
- ▶ Nature and the great outdoors are a big part of Alaska—there is **1 bear for every 21 people** in the state. There are way more fish than people in Alaska.
- ▶ You can always feel good about eating **Alaska Pollock** because it is delicious, and comes from the largest sustainable fishery in the world and it is one of the most consumed fish in the United States!



ALASKA TRIVIA

- ▶ Alaska comes from the Aleut word "Alyeska," meaning **The Great Land**.
- ▶ Alaska is huge! It has 3 million lakes, 29 volcanoes and **34,000 miles of coastline**. Plus it is the largest state in the country—it's twice the size of Texas, and the state of Rhode Island could fit into Alaska 425 times!
- ▶ Nature and the great outdoors are a big part of Alaska. There is **1 bear for every 21 people** in the state.
- ▶ There are hundreds of millions of fish in the Alaska seas, compared to about **700,000 people** living in the entire state.
- ▶ In 1959 it was written into the Alaska State Constitution that fish must be sustainable. It is the law that Alaskans must **protect their fish** to ensure there's enough for future generations.
- ▶ You can feel good about eating Alaska Pollock because not only is it healthy and delicious, the U.S. **Alaska Pollock** fishery is the largest sustainable fishery in the world and it is one of the most consumed fish in the United States.

Bookmark

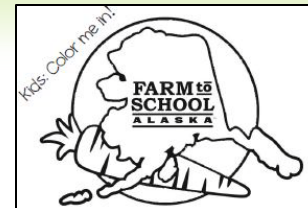


How many different fruits and vegetables do Alaskan farmers grow?

- A) 0
- B) 50
- C) 80+
- D) 500

Answer on back.

Draw your own favorite Alaska Grown food here!



Parents:

Did you know that the Alaska Farm to School program helps your child understand where their food comes from? When kids are knowledgeable of food systems, they make healthier choices.

To learn more, follow us on Facebook at www.facebook.com/alaskafarmtoschool



Answer: C

Cafeteria or classroom example

Delta
Alaska

- 4 generation family farm
- 28 years farming

1000
acres

- 40 acres hulless barley
- 20 acres wheat
- 900 acres of barley

1 ton per
acre

- ~30,000 lbs wheat flour
- ~80,000 lbs barley flour

Barley

- Feeds animals
- Feeds humans

"I love everything about farming! My favorite thing about starting the Alaska Flour Company is the opportunity to grow food for Alaska and cut down on importing food up here."



Bryce Wrigley, Alaska Flour Company

SCHOOL GARDEN FOOD

Which item in the vegetable medley was grown in YOUR school garden?





QUESTIONS

BEFORE TAKING QUESTIONS WE WANT TO GO OVER
SOME OF THE FAQ WE ALREADY HAVE

QUESTIONS

Is there a list of local foods to pick from?

- This will depend on the school food authority and will need to be tailored by district.

How can we be better prepared in the event these funds become available again?

- We are looking into offering a 'buyer/producer planning meeting' early next year. If you would like to provide input about dates and content please go to:
https://www.surveymonkey.com/s/NAFS_grant_info

Will we get this funding again so we can plan better for next year?

- We don't know. However, a report will be written about the grant program, so please pass along your recommendations and input.

Can someone help us fill out the forms and guide us about what we can and can't do?

- Yes, we have instructions and people here to help make this process as easy as possible.

QUESTIONS

Is this a federal grant?

- No, these are state appropriated capital funds to be used in this pilot grant program.

Does moose or caribou need to come from a DEC processor?

- The money cannot be used to purchase processing for donated traditional foods at this time. If you are participating in a donation program follow the same guidelines as you did in the past:
<http://www.god.state.ak.us/tlc/cnp/TEDEC.html>

Is any program that participates in the National School Lunch Program eligible for the grant funds?

- No, only the school districts and Mt. Edgecumbe High School are eligible for this money. Resident Care Child Institutes (RCCI's) are not eligible for the grant funds at this time.

Is this funding a part of the state farm to school program?

- No, the funding is housed in the Department of Commerce, Community and Economic Development. The Alaska Farm to School Program is a collaborator to help promote the success of the grant.

QUESTIONS

Can we use the money to purchase seeds , for example seed potatoes, to grow next summer?

- No, the original intent of this grant was to supplement each school district's school food program, by providing food grown in Alaska on the table at school mealtimes.

Do the foods have to be used in an associated USDA program?

- No, they are not limited to USDA food programs. Some districts don't currently participate in any USDA food programs and. Foods can be used in any school related event, if you aren't sure just contact us to check.

Where can I view this slideshow after the webinar?

- We have the slides archived at: http://dnr.alaska.gov/ag/ag_FTS.htm (scroll down to Presentation archives)

QUESTIONS

Can we be reimbursed for local foods before they are served as long as they will be used during this school year?

- As long as you are purchasing eligible foods you can get reimbursed, when it is used is up to you.

Can any of the funds and/or foods be carried over for use into the next school year?

- All food purchases must be done by 6/30/13, when the foods are served is up to you.

How do I plan my menu for these new local items? Do I have to change my whole menu plan?

- It may be easier to think of items you already purchase that could be substituted with a local source (i.e. ground beef). Don't worry about changing your menu too significantly, try adding a 'local lunch day' once or twice a month.

CONTACT INFORMATION

Grant process and questions

- Debi Kruse: Debi.kruse@alaska.gov, 907-269-8131

Farm to School & AK Grown Contact

- Johanna Herron: johanna.herron@alaska.gov, 907-374-3714

Alaska Seafood Contact

- Tyson Fick: tfick@alaskaseafood.org, 907-465-5563

Child Nutrition Contact

- Beth Seitz: elizabeth.seitz@alaska.gov, 907-465-8709

Food Safety, DEC

- Brehan Kohl: brehan.kohl@alaska.gov, 907-269-7636