

Farm to School Program

http://dnr.alaska.gov/ag/ag_FTS.htm



Johanna Herron

Program Coordinator

Department of Natural Resources,

Division of Agriculture

Good news!



What is farm to school and is it required?

- Funded by house bill no. 70
- Farm to school IS NOT required
- Farm to school IS an *opportunity*

In Alaska?



Opportunities

- Learn and borrow from other states
- Good timing with all the other requirements
- New to Alaska so we can make it what we want
- Can be leaders in statewide success

Basic goals of the program

School Nutrition Programs

- To meet the diverse needs in an efficient manner
- To increase youth exposure to Alaskan foods

Local Food Systems

- To strengthen local food systems by supporting regional and local food producers
- To promote sustainable agriculture and fishing

Education

- To provide support for health and nutrition education
- To increase youth understanding of how food gets to their plate

Children's Health, Habits, and Happiness



Where do you start?

Start small

Build a network

Consider logistics

Market

Educate

Where do school food service professionals stand?

Results from the
MEALS survey

Project MEALS

Johanna Herron
Andrea Bersamin, PhD, advisor



MEALS



More
Eating of
Alaskan
Lunches in
School

What are
Alaskan
Foods?



Alaskan foods are any
foods fished, hunted,
harvested or grown in the
state of Alaska.



Alaskan Foods:

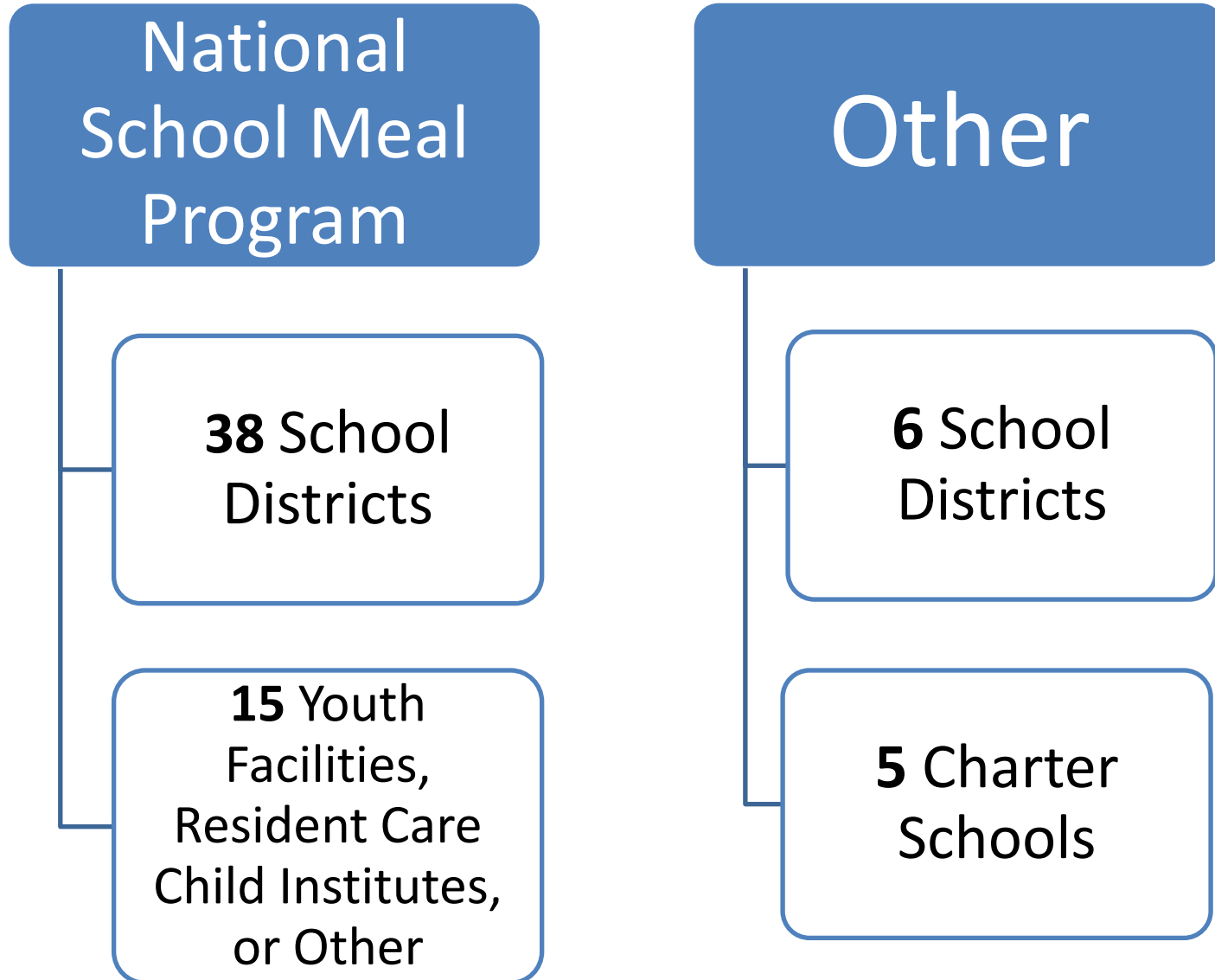
As Defined for the MEALS Project

*Any food fished, hunted, harvested,
or grown in the state of Alaska*

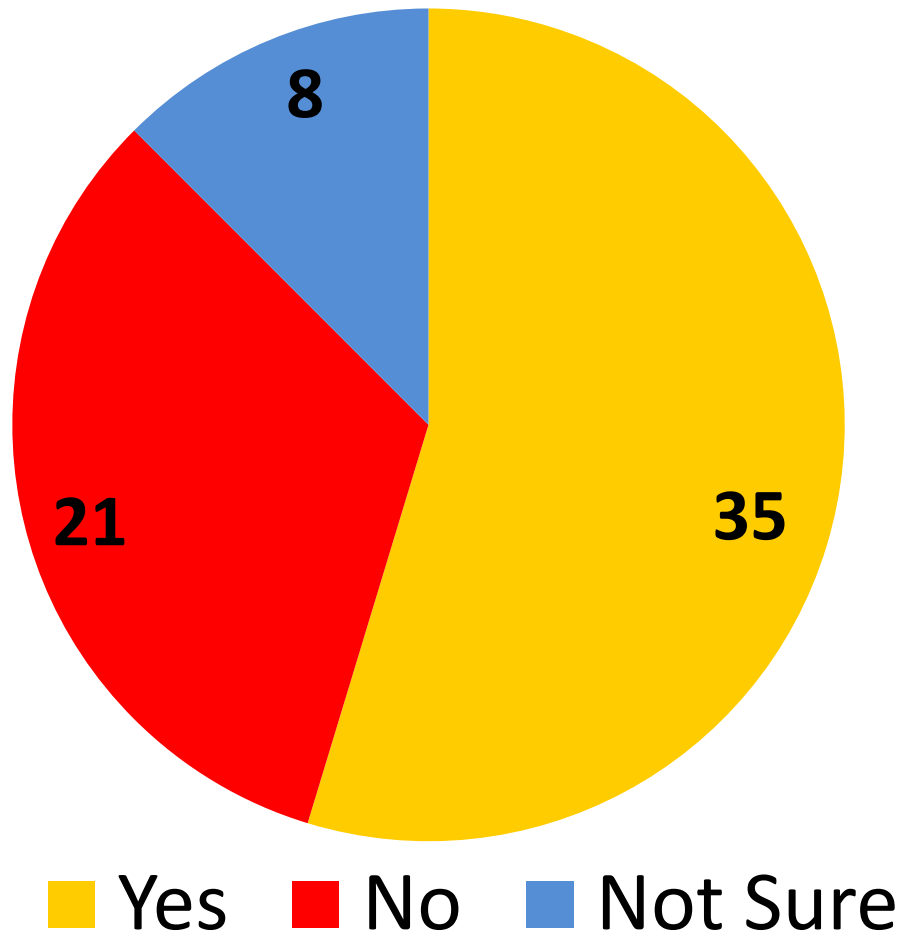
Specific project objectives

- 1) To look at the interest and challenges of using Alaskan foods in the school meal program, from the school food service professional perspective.
- 2) (Guided by findings) To develop recommendations and resources to increase the use of Alaskan foods in the school meal program.

64 Survey participants

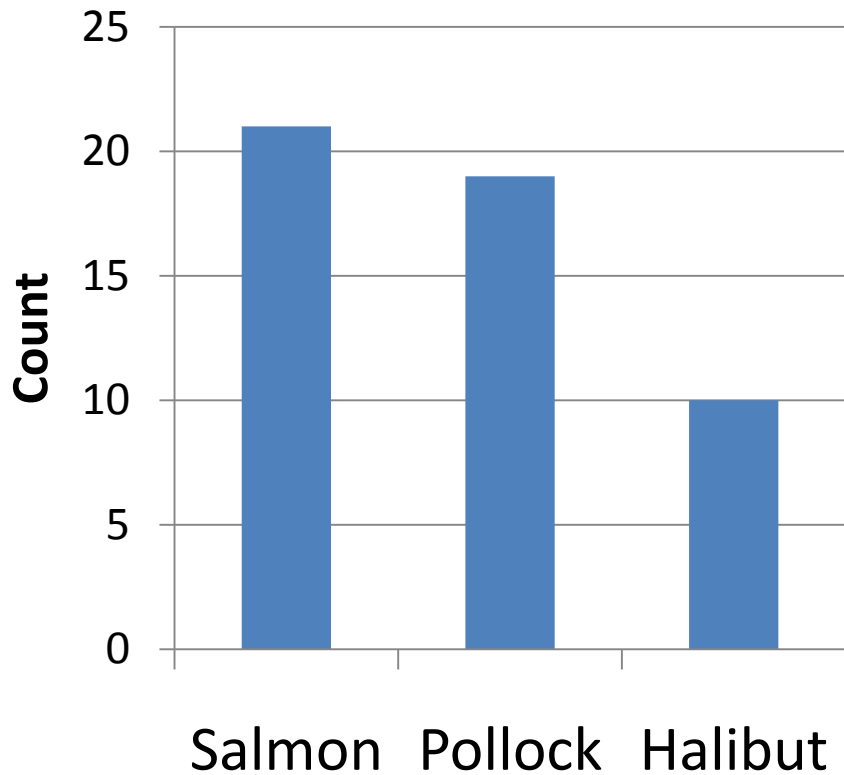


Has your district ever served Alaskan foods?

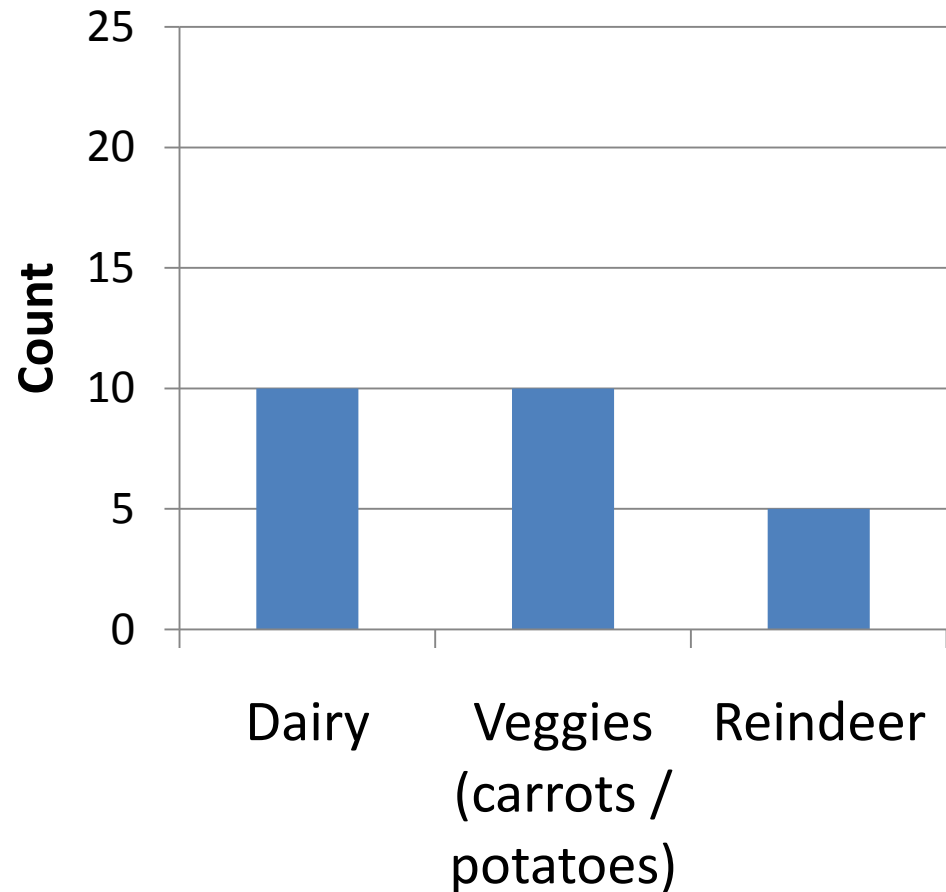


Top purchased Alaskan foods

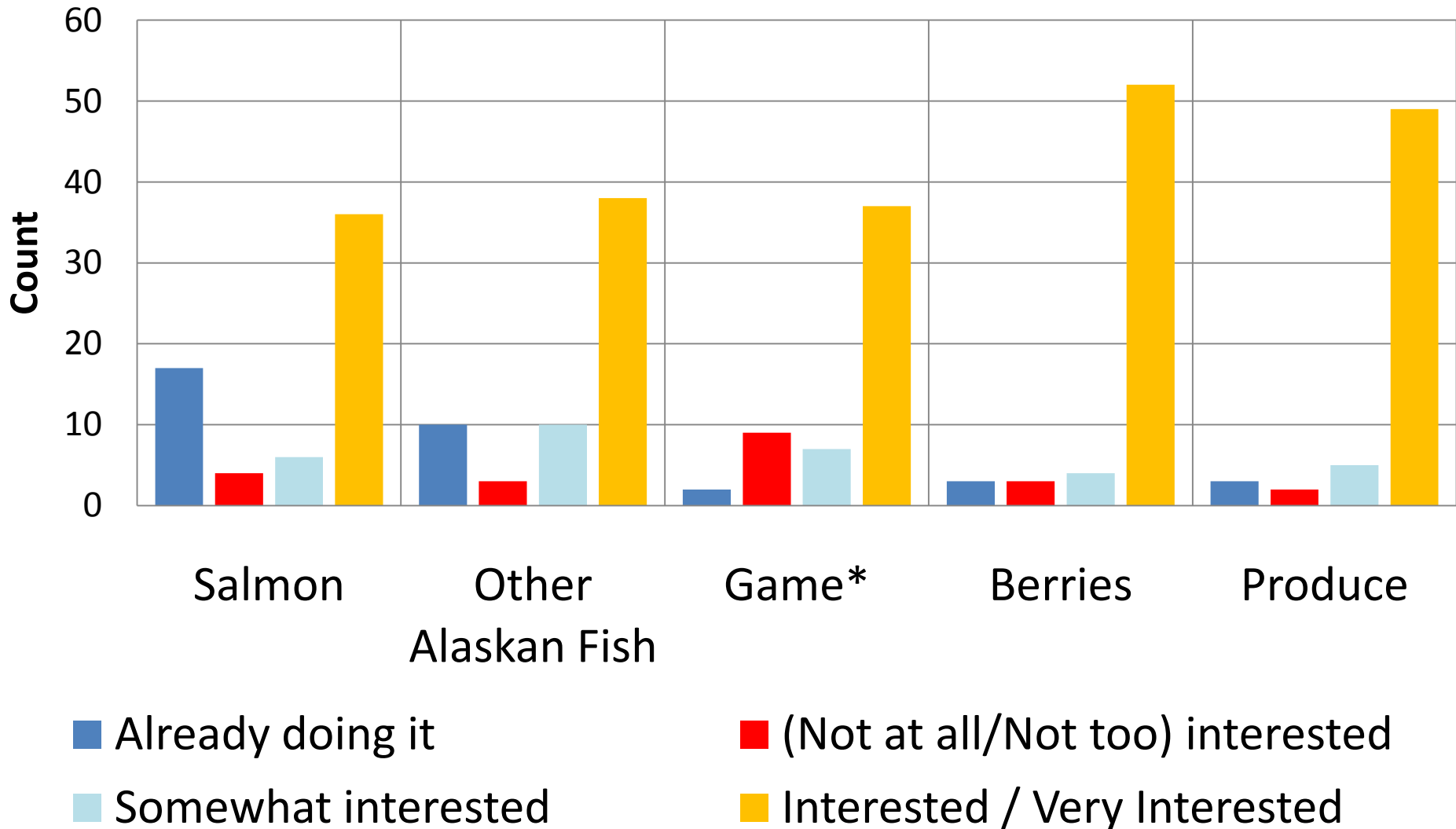
Fish



Other

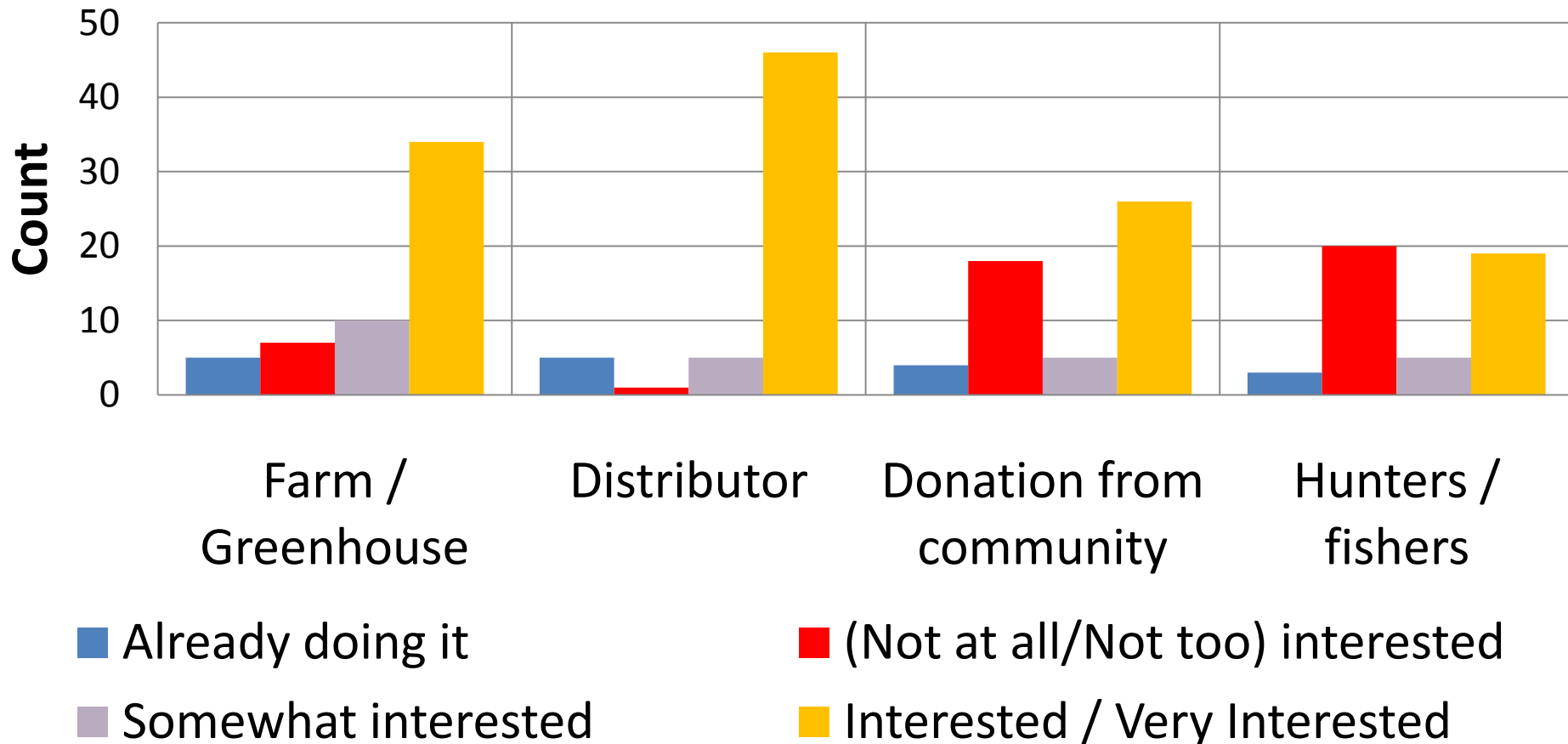


How interested are you in incorporating the following Alaskan foods into your meal planning?



Preferred delivery method

How interested are you in purchasing or accepting foods from...



Purchasing considerations

Most Important

Reliable supply [58/61; 95%]

Cost [57/62; 92%]

Delivery considerations [56/62; 90%]

Purchasing choice consistency [53/61; 87%]

Purchasing considerations

Concerns

Finding Alaskan producers in area from whom to purchase

Lack of facilities to handle fresh Alaskan foods

Convenience (one-stop shopping)

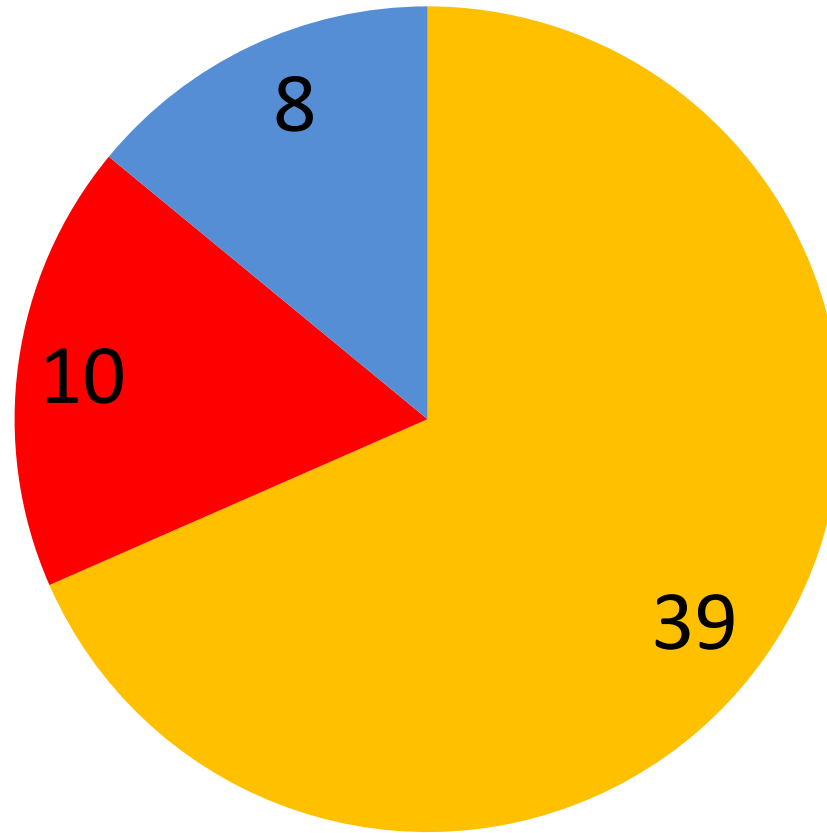
Lack of staff to prepare fresh Alaskan foods

Top 2 concerns with Alaskan foods (compared to non-Alaskan foods)

Reliable Supply

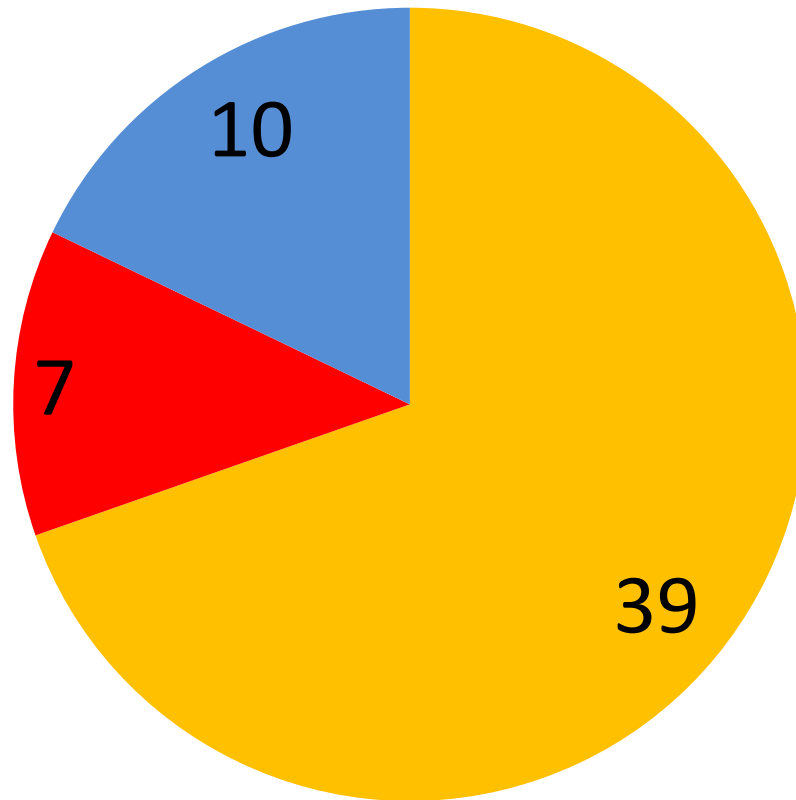
Cost

Does your district have a distributor from whom you purchase the majority of your items?



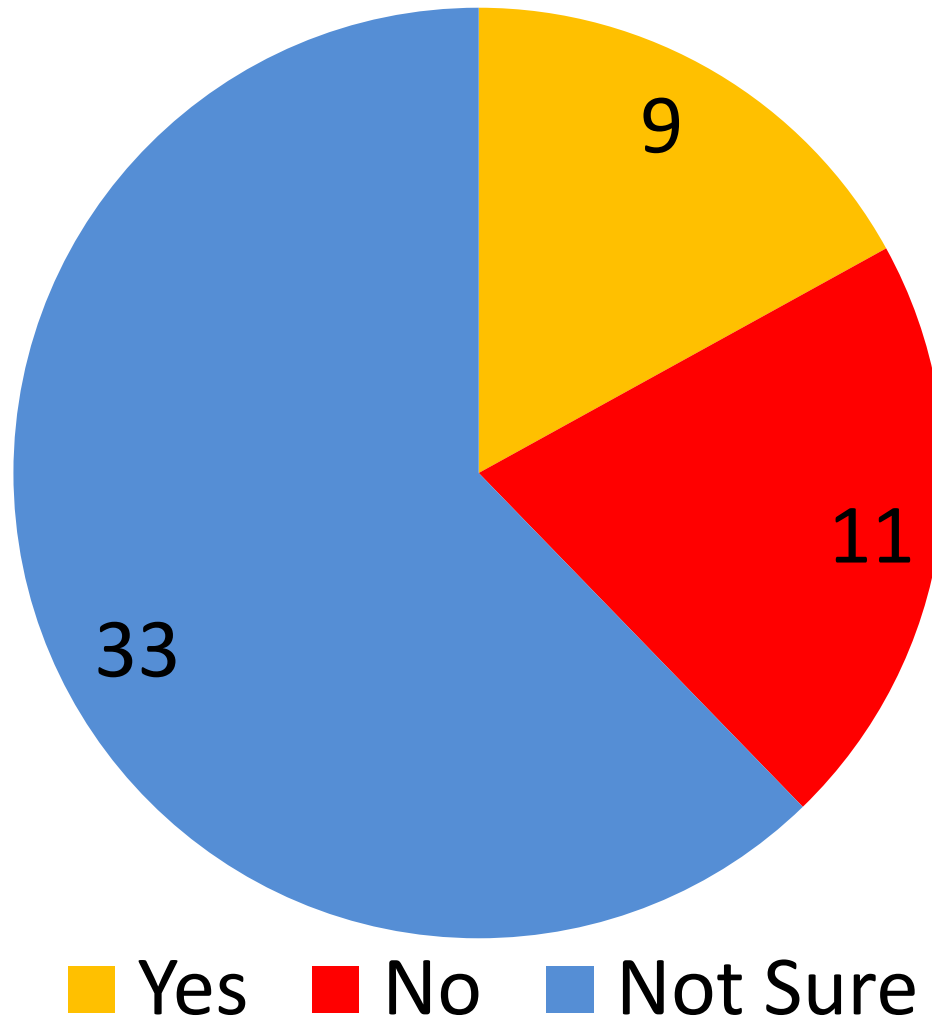
■ Yes ■ No ■ Not Sure

Top 3 distributors

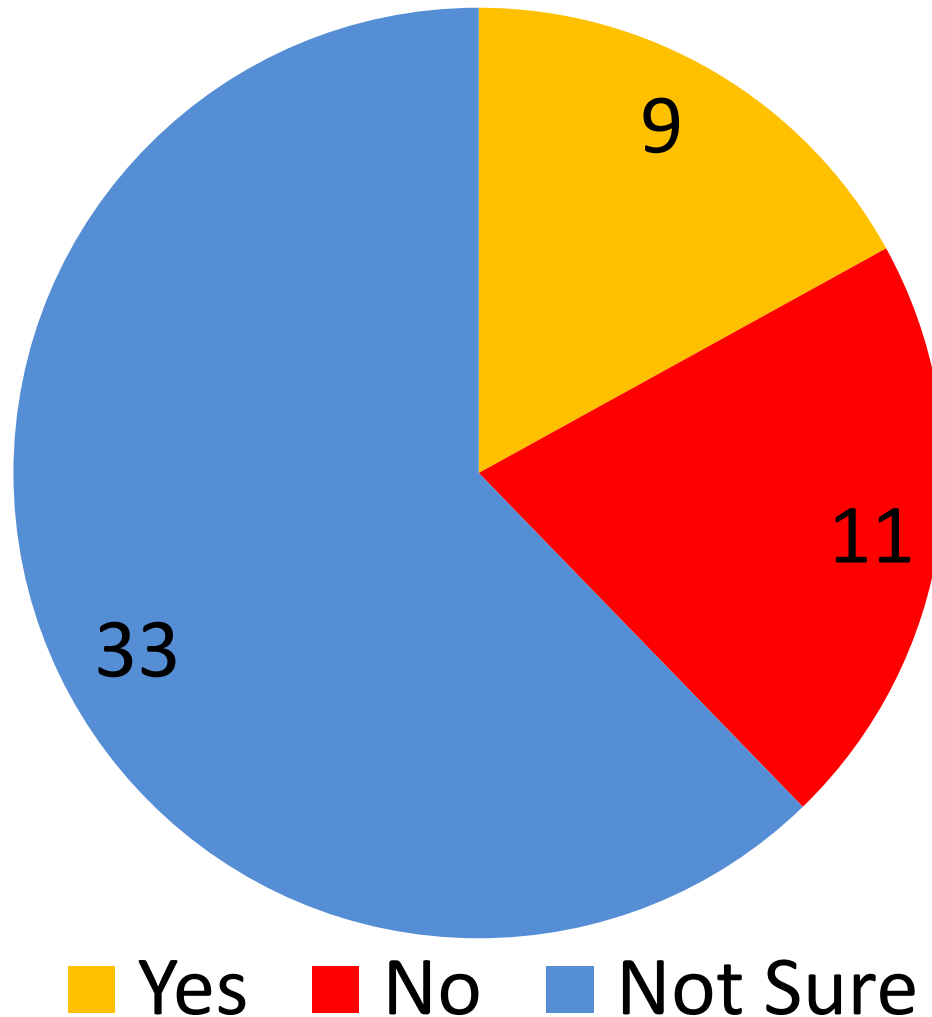


■ Food Service of America ■ Quality Sales ■ Sysco

Does your district's primary distributor offer Alaska grown produce?



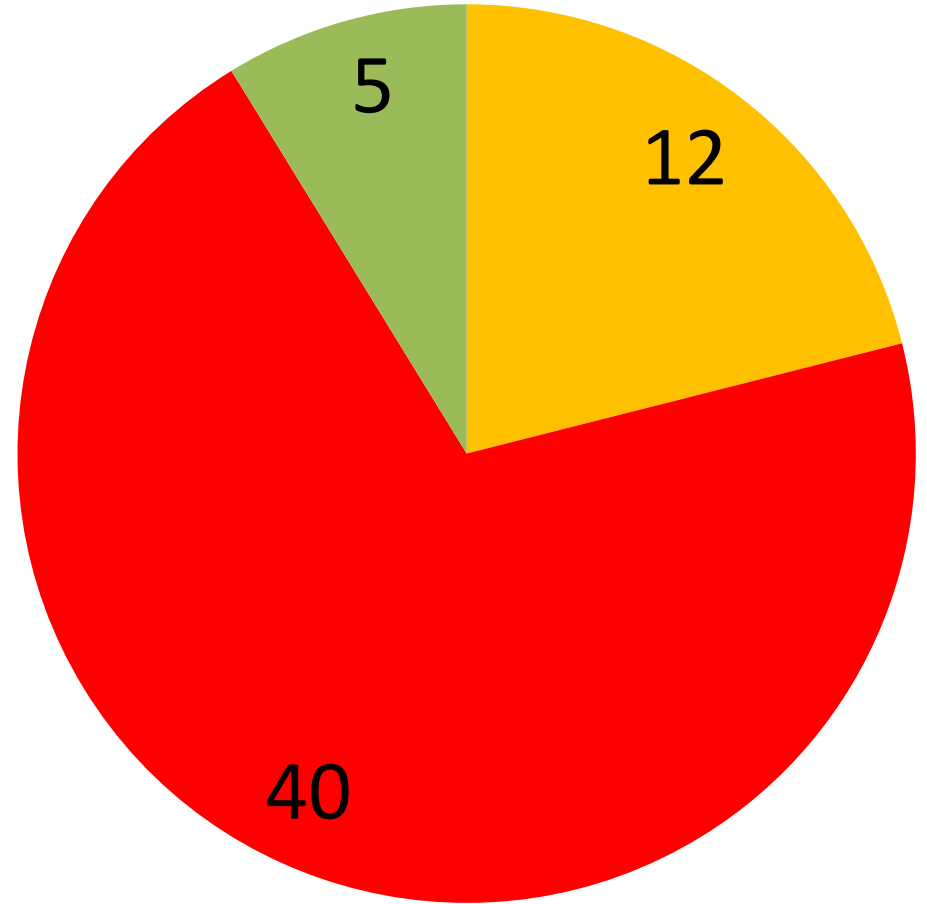
Does your district's primary distributor offer Alaska grown produce?



Alaska Owned and Operated Distributors

- Palmer Produce
- Mike and Teddy's Meats
- Taco Loco
- Country Foods
- Great Alaska Bread Company
- Odom Corporation
- Quality Sales
- Northern Lights Dairy
- Wilson Brothers
- Peterkin Distributors
- Mt. McKinley Meats
- Span Alaska
- Juneau Wholesale
- Nome Trading Company
- Leask Market
- Cost Savers

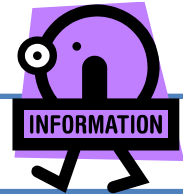
Do any schools in your district currently have a school garden?



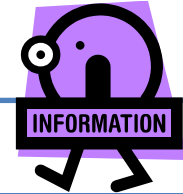
■ Yes ■ No ■ Not Sure

Top 5 desired resources

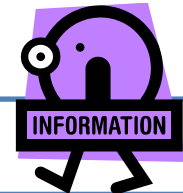
Strategies for connecting with Alaskan food producers



Cost comparisons for Alaskan and non-Alaskan menu options



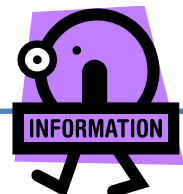
Info. on USDA purchasing regulations related to Alaskan foods



Financial support



Information on foods available and where to purchase



Information on foods available and where to purchase



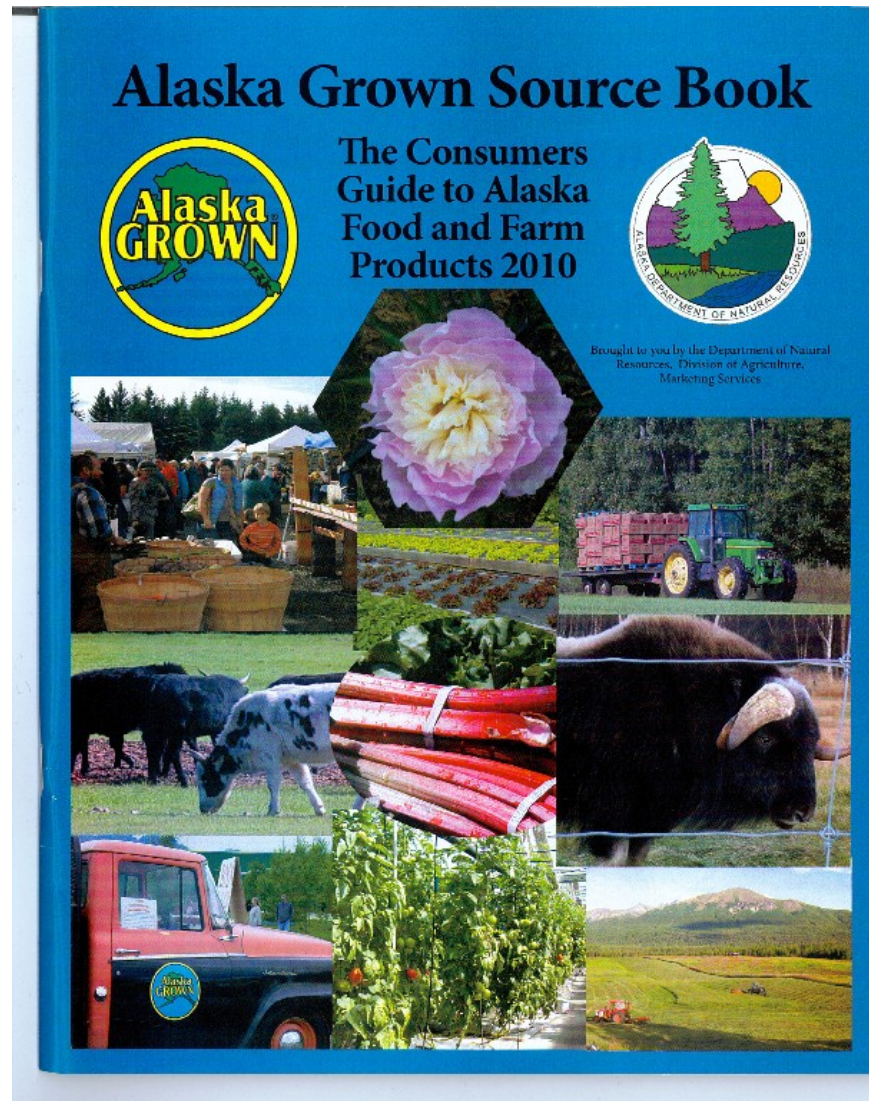
**FOOD
HUB**

FoodHub: <http://food-hub.org/>

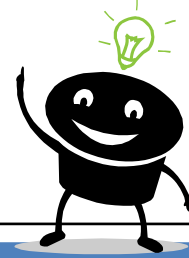
- Online directory and marketplace
- School FSP's can make a profile and use it for:
 - Finding local farms and food producers
 - Search for product by type of food producer
 - List products you want to buy

Alaska grown source book

<http://dnr.alaska.gov/ag/FFPD2010/FFPD.pdf>



Ideas



Use MEALS survey results to:

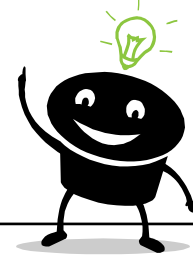
- Inform Alaskan food producers of school district needs and concerns
- Create a toolbox of resources for school food service professionals that address main concerns and questions

Conduct a local food producer survey

School tours for farmers and other food producers

Start a 'Harvest of the Month' program to kick off the school year

Ideas (cont.)



Product development

Pilot project to look at feasibility for purchasing local product

Work with DEC, UDSA, and CNS to develop standards, protocols, and fact sheets for:

- Using School Garden grown food in the lunches
- Using locally grown food not handled through a wholesaler

Fundraising opportunities

I am here to represent you



Pacific Seafood

The farm to school program was developed to help get more Alaskan foods into the national school lunch program.

I need your input, ideas, and cooperation to help make that happen!



How can I help you?

- I have access to a tremendous amount of resources.
 - How to start a conversation with local food producers.
 - Things to keep in mind about food safety and regulations.
 - What is working in other states.
- I will do everything I can to find answers to any questions you may have.
 - I believe stakeholder interest and opinion is the fastest way to success. Your questions are my priority.
- I can link people up that could benefit each other.
- I am eager to tackle some of the challenges and help start efforts with any group who is ready.

**Please fill out the farm to school
input sheets and get them back to
me!**

**Questions and input always
welcome!**

johanna.herron@alaska.gov

(907) 374-3714

Thank you!