

NANCY LAKE STATE RECREATION AREA MASTER PLAN



Canoeing at NLSRA - Fun for the Entire Family.

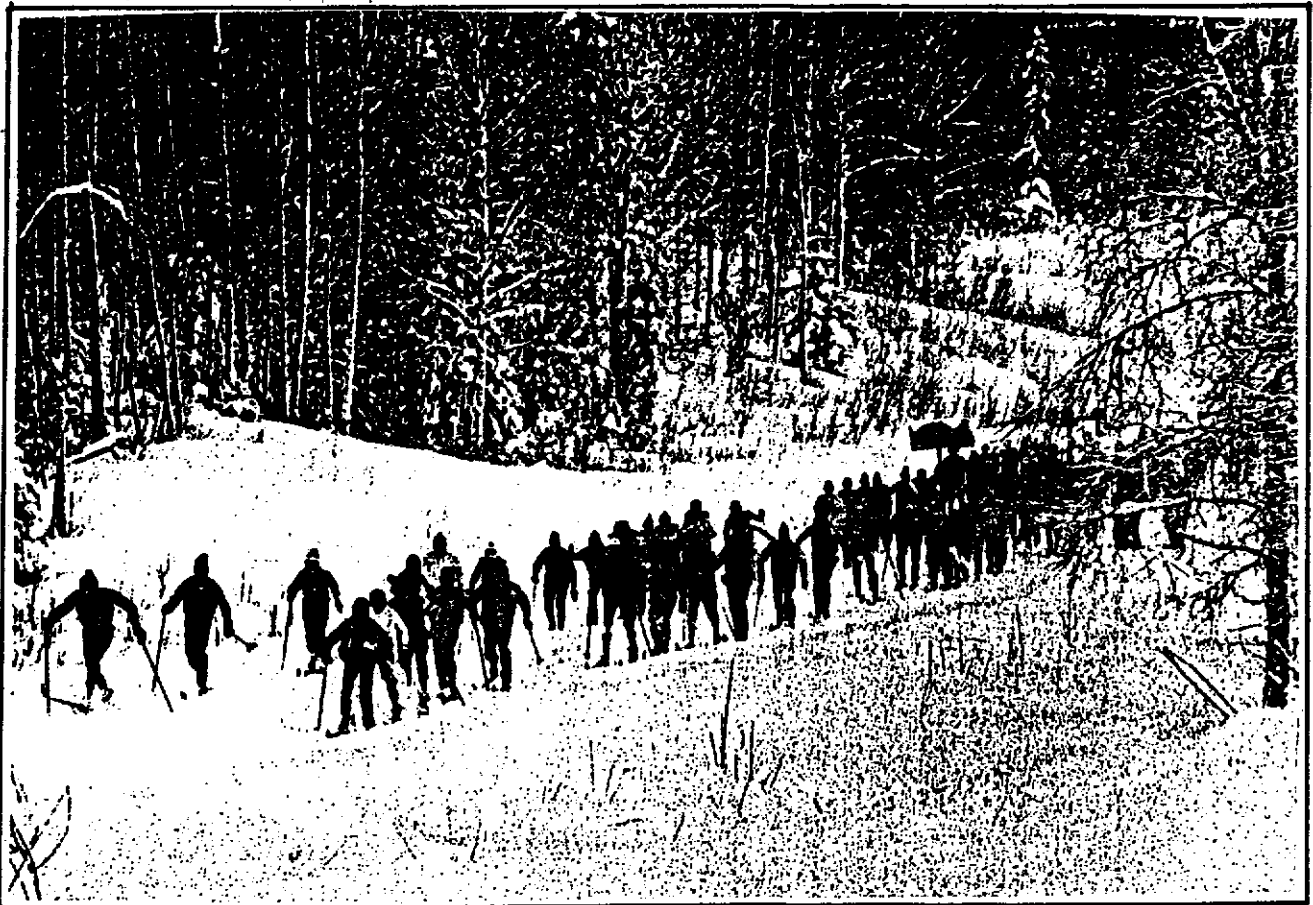
NANCY LAKE STATE RECREATION AREA MASTER PLAN

**Prepared by the Division of Parks
Park Planning Section**



**State of Alaska, Bill Sheffield, Governor
Department of Natural Resources,
Esther Wunnicke, Commissioner**

October 1983



Crosscountry Ski racing at NLSRA.

TABLE OF CONTENTS

TABLE OF CONTENTS

PAGE

0	LIST OF FIGURES
2	SUMMARY
	INTRODUCTION
3	Purpose
3	Establishment
5	Size, Location, Setting, and Significance
5	Definition of a State Recreation Area
6	Planning Process
	NATURAL RESOURCE INVENTORY
7	Climate
8	Topography
8	Soil
10	Vegetation
11	Surface Waters
12	Energy
13	Fish and Wildlife
15	Scenic Values
15	Natural Hazards
	CULTURAL RESOURCE INVENTORY
16	History
16	Population
17	Transportation and Circulation
18	Land Ownership
18	Local, Regional Economy
	REGIONAL RECREATION OPPORTUNITIES AND PROVIDERS
20	State of Alaska
21	Matanuska-Susitna Borough
22	City of Houston
22	Private Sector
22	Nancy Lake State Recreation Area Opportunities
23	Public Recreation Issues and Objectives
	VISITOR USE, PREFERENCES AND PROJECTIONS
26	Existing Recreational Use
27	Local Recreation Preferences
29	Regional Recreation Preferences
31	National Recreation Preferences
32	Trends

PAGE

	ANALYSIS AND EVALUATION
33	Recreational Opportunities
34	Recreational Facilities
41	Access and Circulation
44	Historical Preservation and Interpretation
44	Interpretation
46	Economics
47	Land Use Conflicts
	MANAGEMENT AND DEVELOPMENT RECOMMENDATIONS
50	Land Use Zoning
53	Facility Recommendations
80	Other Recommendations
	IMPLEMENTATION
89	Phasing
96	MODIFICATIONS AND DEVIATIONS
	APPENDIX
98	A - Nancy Lake State Recreation Area User Survey Results

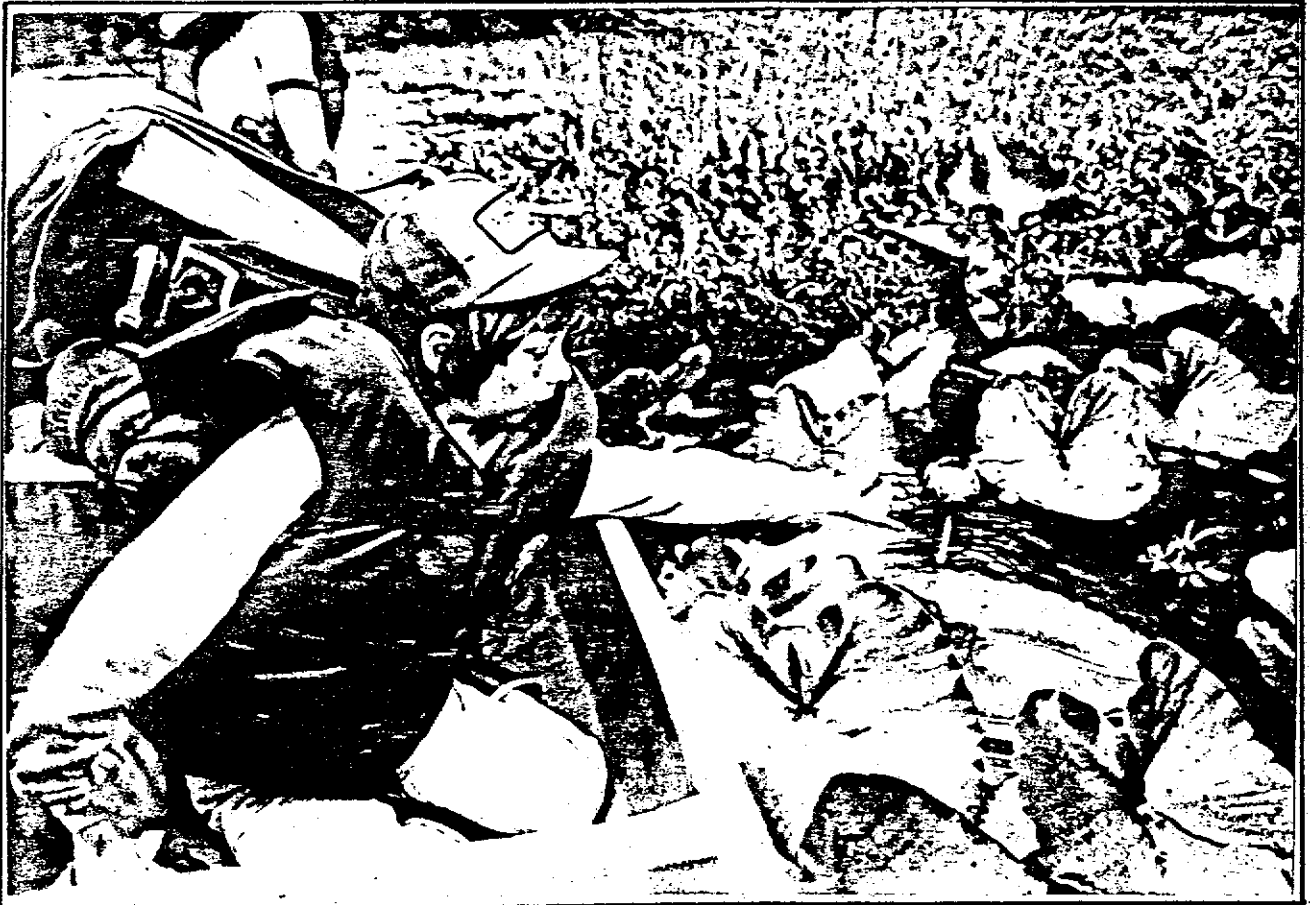


A Lucky Catch at No Luck Lake.

LIST OF FIGURES

LIST OF FIGURES

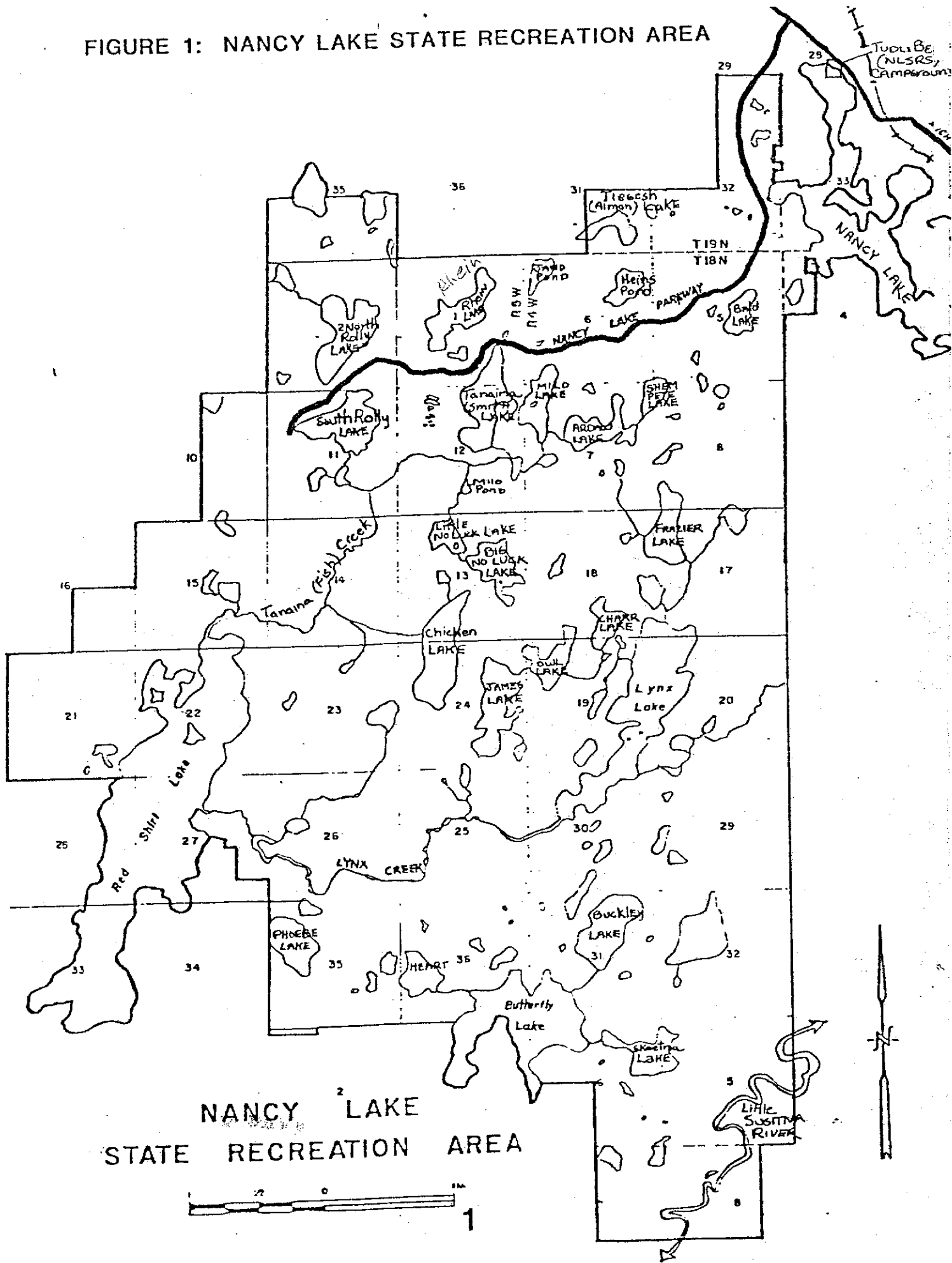
PAGE	FIGURE
1	1. Nancy Lake State Recreation Area
4	2. Location of NLSRA
9	3. NLSRA Soil Type
14	4. Harvest Data from Sport Fish Caught Within NLSRA, 1977-1980
17	5. Population Projection for Anchorage and the Matanuska-Susitna Borough
19	6. Existing Land Ownership
21	7. Regional Recreation Opportunities
26	8. NLSRA Visitor Use Monthly Variations
27	9. Average Daily Traffic at Willow Maintenance Station
30	10. Desired Features in Out-of-Town Recreation Areas
35	11. Existing Recreational Facilities
38	12. Existing and Proposed Trails and Roads
45	13. Historic Sites
51	14. NLSRA Land Use zone Classification
52	15. Characteristics of a State Recreation Area
79	16. Proposed Facility Summary
83	17. Acquisition Recommendations



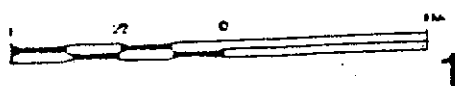
A Placid Moment at Echo Pond.

SUMMARY

FIGURE 1: NANCY LAKE STATE RECREATION AREA



NANCY LAKE
STATE RECREATION AREA



1

SUMMARY

An important contributor of outdoor recreational opportunities in the south-central region of Alaska is the Nancy Lake State Recreation Area (NLSRA). The 1966 legislature established the Nancy Lake State Recreation Area as a unit of the Alaska State Park System for the single purpose of recreation. The area consists of an interconnected system of freshwater lakes and rolling hillsides graced with spruce and paper birch. The NLSRA lies in the heart of the Matanuska-Susitna valley and is one of the more popular places for families and friends to spend a few days together in a quiet, natural setting.

The master plan for the NLSRA has been prepared to guarantee the continued use of the state park unit as a provider of outdoor recreational opportunities. The plan guides a continued expansion of facilities, trails, and management within the area while maintaining the quiet, natural beauty recreationists desire through proper development and operational procedures. The specific recommendations for the area have been grouped into phases, to be completed in an orderly fashion as funding and operational growth permit. These phases will allow a continuity of development to achieve public desires and state park objectives.

The NLSRA will be managed on a year-round basis. Key recommendations which are supported by the public include the development of a 75 person group camp facility, instituting a system of public use cabins, increasing the interpretive programs and staffing capabilities, expanding the back-country opportunities through the increased development of a trail network and campsites, and by expanding road accessible campground and day-use facilities.

Presently the NLSRA receives over 50,000 visitors each year. With the continued growth of the Matanuska-Susitna valley population, it can be foreseen that the NLSRA will play an even more important role as a state-wide provider of outdoor recreation opportunities.