

Guide to



Crow Pass Trail

Part of the Iditarod National Historic Trail **in Chugach State Park**



Trail Description:

Trail ascends from the Crow Creek Trailhead through talus fields and mine ruins on its way to Crow Pass. As it descends from Crow Pass, the trail meanders through snowfields until the Clear Creek ford (no bridge). Brush and forest characterize the trail to the Eagle River ford site below Glacier Lake. The trail then follows Eagle River through forest on its path to the Nature Center. The full length of the trail generally takes two or more days, and can be traveled in either direction. Shorter day trips from either trailhead are possible.

Special Features:

Trail follows historic Iditarod supply route. Mining ruins. Alpine lake near pass. Panoramic views of peaks and glaciers. Abundant wildlife. Established backcountry campsites with distances from Eagle River Nature Center: Rapids Camp (1.7 miles), Echo Bend (3 miles), Heritage Falls (5.5 miles), Icicle Creek (6 miles), Twin Falls (9 miles)

Park Rules:

Fires are allowed in portable camp stoves, metal fire rings provided by the park, and on Eagle River gravel bars only. Camping is only allowed at designated sites, or over ½ mile from trailheads. Camping in an undeveloped area of a state park is limited to 10 consecutive days. Visit <http://dnr.alaska.gov/parks/units/chugach> for a complete set of park rules.

Access: Eagle River Nature Center or Crow

Creek Trailhead in Girdwood

Allowable Uses: Hiking

Distance: 21 miles one way

Elevation Gain: 2,100 ft from Crow Creek Trailhead; 3,100 ft from Eagle River Nature Center

Difficulty: Easy to Difficult

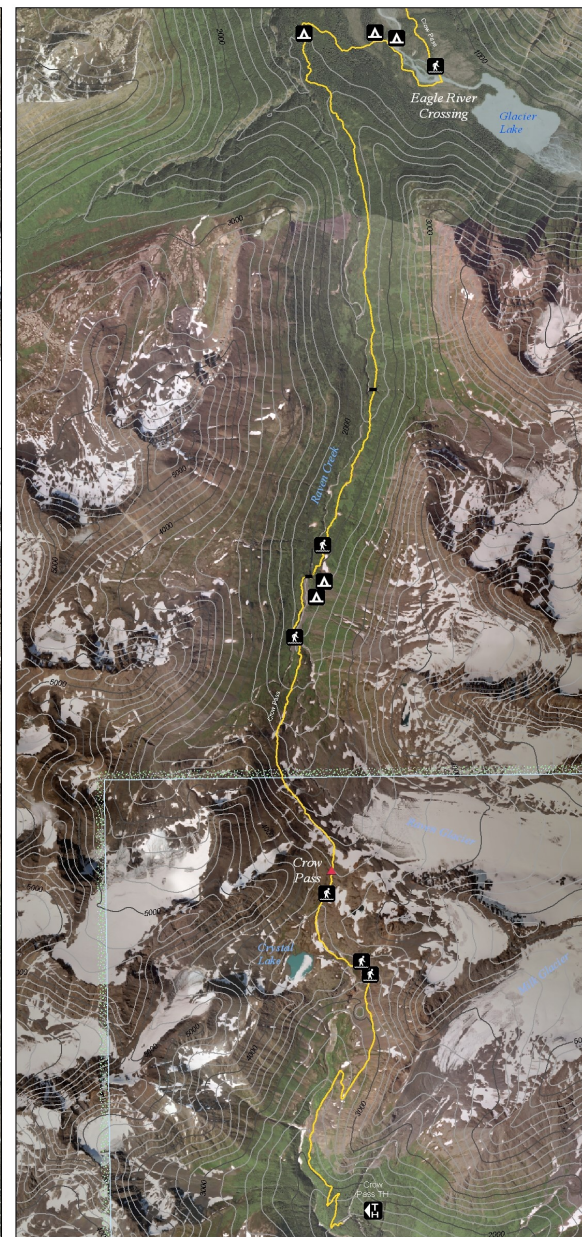
Safety and Considerations:

Crossing Eagle River can be dangerous and river temperatures are extremely cold! Know proper river fording techniques. It is recommended that you cross at the marked ford sites (white posts). Test depth with a walking stick. Choose your time; glacial rivers swell under hot sun or heavy rains, and are usually lowest during the early morning hours. Unfasten waist and chest straps, and loosen shoulder straps. When in doubt turn back the way you came. Be prepared for emergencies, carry a satellite phone, and file a trip plan with a friend. Use water purification techniques for drinking water to avoid contracting Giardiasis (beaver fever).



Chugach State Park Headquarters
Mile 115, Seward Highway
(907) 345 - 5014
csp@alaska.gov



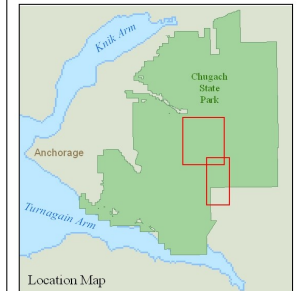


State of Alaska

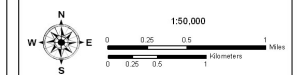
Trail Assessment and Inventory of Chugach State Park August 2008

Projected Coordinate System:
NAD 83, State Plane Alaska, Zone 4
Contour Interval: 200 feet

Crow Pass Trail System



Legend



Produced by: Alaska Department of Natural Resources, Division of Support Services, Land Records Information Section. Date Printed: August 1, 2008. Cartographers: Martha Stodd, Mike Esomaki.

This map represents differential GPS data collected during the Chugach State Park Trail Inventory Pilot Project that was conducted in conjunction with National Park Service (NPS) Evers and Trails Conservation Assistance (ETCA) program. Alaska Department of Natural Resources (ADNR) Land Record Information Service (LRIS), Department of Parks and Outdoor Recreation (DPORE), and Chugach State Park.

Chugach State Park: (907) 345-5014. Email: osp@alaska.gov. Alaska State Parks: www.dnr.state.ak.us/parks. Emergency: 911.

The State of Alaska makes no expressed or implied warranties (including warranties of merchantability and fitness) with respect to the character, function, or capabilities of this product or its appropriateness for any user's purposes. In no event will the State of Alaska be liable for any incidental, indirect, special, consequential or other damages suffered by the user or any other person or entity whether from use of the product, any failure thereof or otherwise, and in no event will the State of Alaska's liability to you or anyone else exceed the fee paid for the product.



Technical assistance provided by the National Park Service - Rivers, Trails and Conservation Assistance Program.

Contact Information

Chugach State Park Headquarters
Mile 115, Seward Highway
(907) 345 - 5014
csp@alaska.gov

Eagle River Nature Center
Mile 12 Eagle River Road
(907) 694 - 2108
www.ernc.org